

Figure S1. HRTEM images of (a) CeO_2 NC, (b) $\text{Ce}_{0.95}\text{La}_{0.05}\text{O}_{2-\delta}$ NC, (c) $\text{Ce}_{0.90}\text{La}_{0.10}\text{O}_{2-\delta}$ NC and (d) $\text{Ce}_{0.85}\text{La}_{0.15}\text{O}_{2-\delta}$ NC+NR. Digital diffraction patterns, which are displayed at the bottom left corner of each image, have been acquired at the different areas enclosed in white. All scale bars correspond to 10 nm.

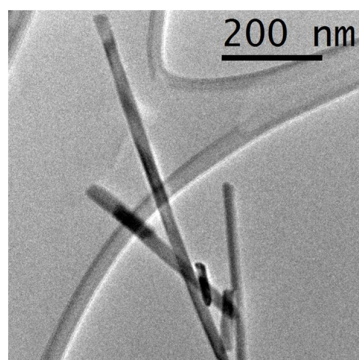


Figure S2. TEM image of $\text{La}(\text{OH})_3$ sample, presenting a nanorod morphology.

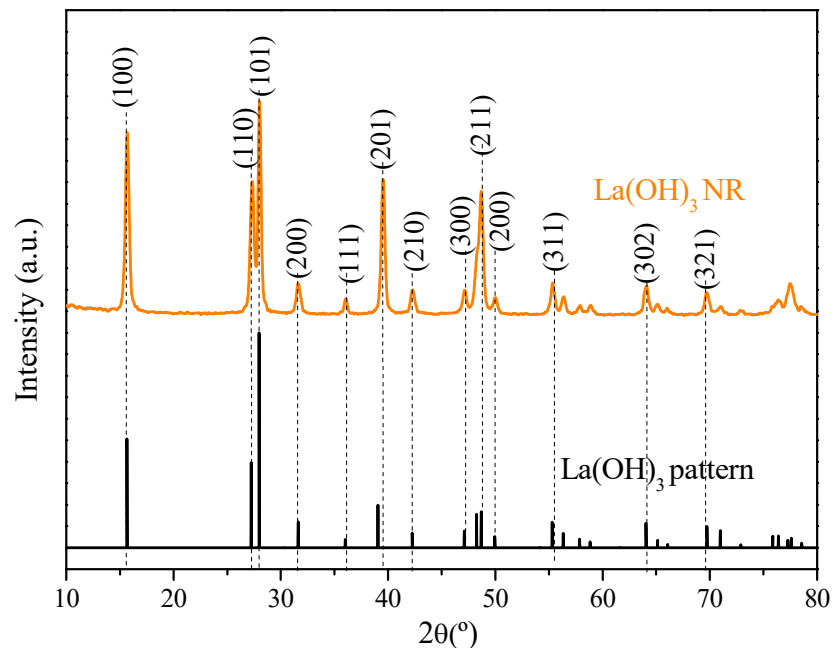


Figure S3. XRD diffractogram of $\text{La}(\text{OH})_3$ sample compared with a lanthanum hydroxide reference pattern [64].

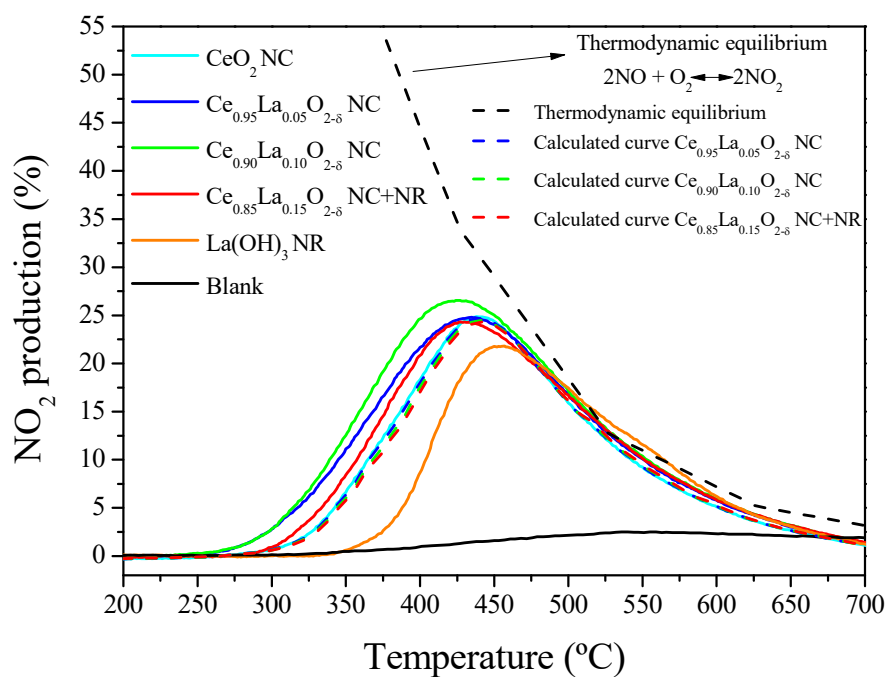


Figure S4. NO_2 production of $\text{Ce}_{1-x}\text{La}_x\text{O}_{2-\delta}$ (x : 0, 5, 10 and 15 mol.%) (nanocubes/nanorods) and $\text{La}(\text{OH})_3$ NR versus calculated/theoretical curves, represented by dotted lines.