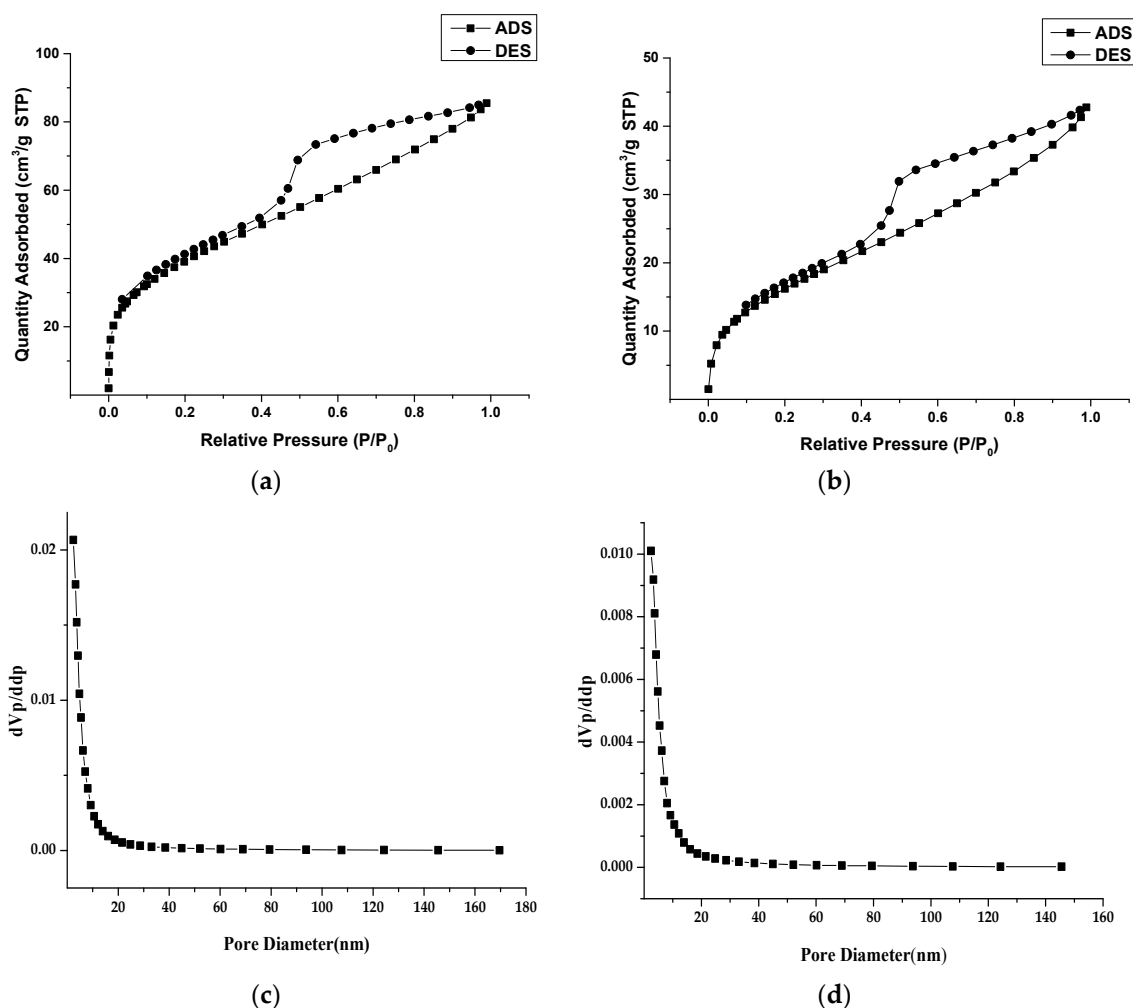
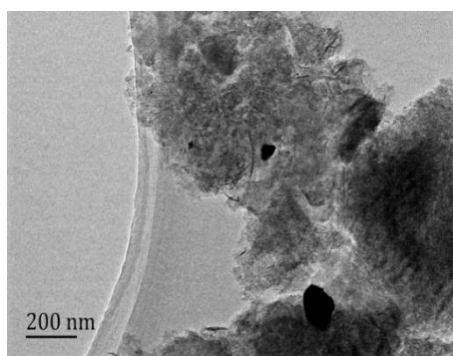


# Supplementary Materials: Morpholine-Modified Pd/ $\gamma$ -Al<sub>2</sub>O<sub>3</sub>@ASMA Pellet Catalyst with Excellent Catalytic Selectivity in the Hydrogenation of *p*-Chloronitrobenzene to *p*-Chloroaniline

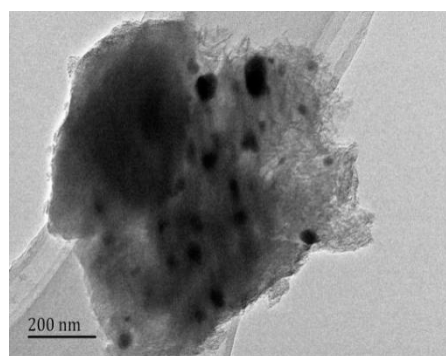
Wei Wang <sup>1,†</sup>, Wenlong Xu <sup>2,†</sup>, Kedar Bahadur Thapa <sup>2</sup>, Xiaorui Yang <sup>1</sup>, Jinhua Liang <sup>1</sup>, Liyan Zhu <sup>1</sup> and Jianliang Zhu <sup>1,\*</sup>



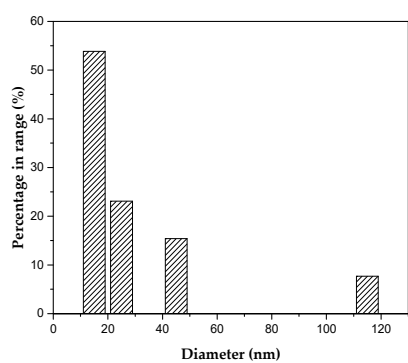
**Figure S1.** N<sub>2</sub> adsorption–desorption isotherms of (a) Pd/ $\gamma$ -Al<sub>2</sub>O<sub>3</sub>@ASMA catalyst before immersed into morpholine; (b) Modified Pd/ $\gamma$ -Al<sub>2</sub>O<sub>3</sub>@ASMA catalyst after immersed into morpholine; and pore size distributions (c) Pd/ $\gamma$ -Al<sub>2</sub>O<sub>3</sub>@ASMA catalyst before immersed into morpholine; (d) Modified Pd/ $\gamma$ -Al<sub>2</sub>O<sub>3</sub>@ASMA catalyst after immersed into morpholine.



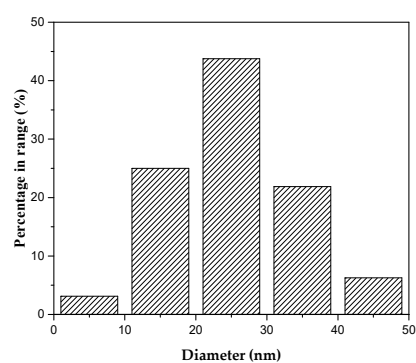
(a)



(b)



(c)



(d)

**Figure S2.** HRTEM images of (a) Pd/γ-Al<sub>2</sub>O<sub>3</sub>@ASMA catalyst before immersed into morpholine; (b) Modified Pd/γ-Al<sub>2</sub>O<sub>3</sub>@ASMA catalyst after immersed into morpholine; and Metal particle size distribution images of (c) Pd/γ-Al<sub>2</sub>O<sub>3</sub>@ASMA catalyst before immersed into morpholine; (d) Modified Pd/γ-Al<sub>2</sub>O<sub>3</sub>@ASMA catalyst after immersed into morpholine.

© 2017 by the authors. Submitted for possible open access publication under the



terms and conditions of the Creative Commons Attribution (CC BY) license (<http://creativecommons.org/licenses/by/4.0/>).