

Figure S1. Description of the single-mode microwave apparatus (Sairem).

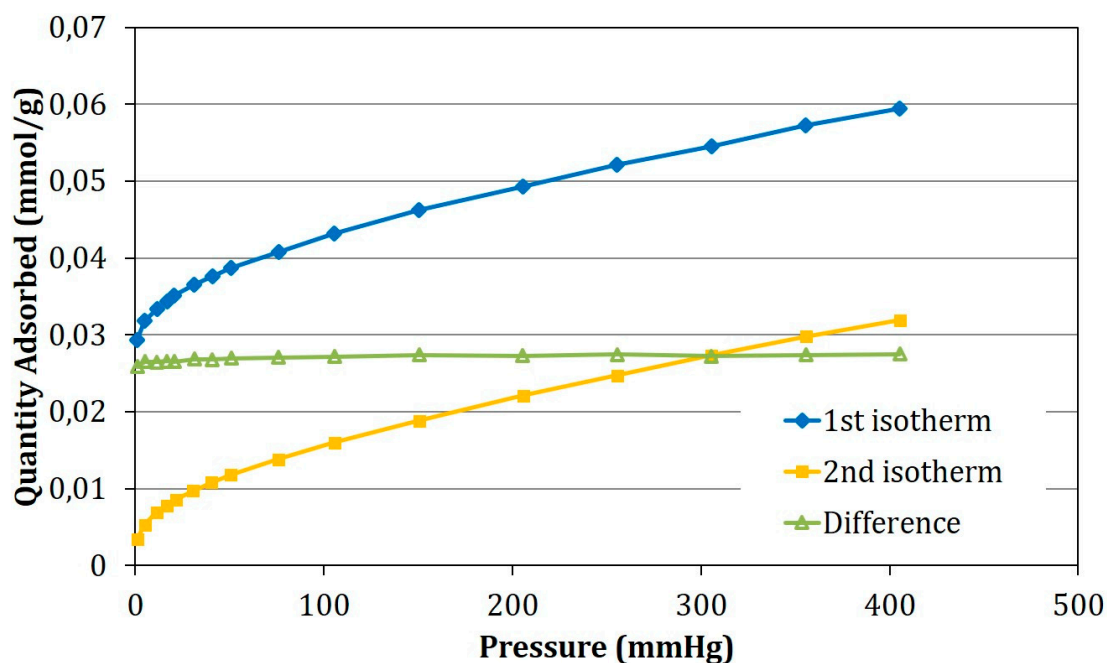


Figure S2. Example of a typical CO adsorption isotherm: 1st isotherm corresponds to both physisorbed and chemisorbed CO, 2nd isotherm, measured after evacuation, corresponds to physisorbed CO and the difference corresponds, therefore, to the amount of chemisorbed CO.