

Figure S1 ESI-MS/MS spectrum of compound **1** (4F-3Me- α -PVP)

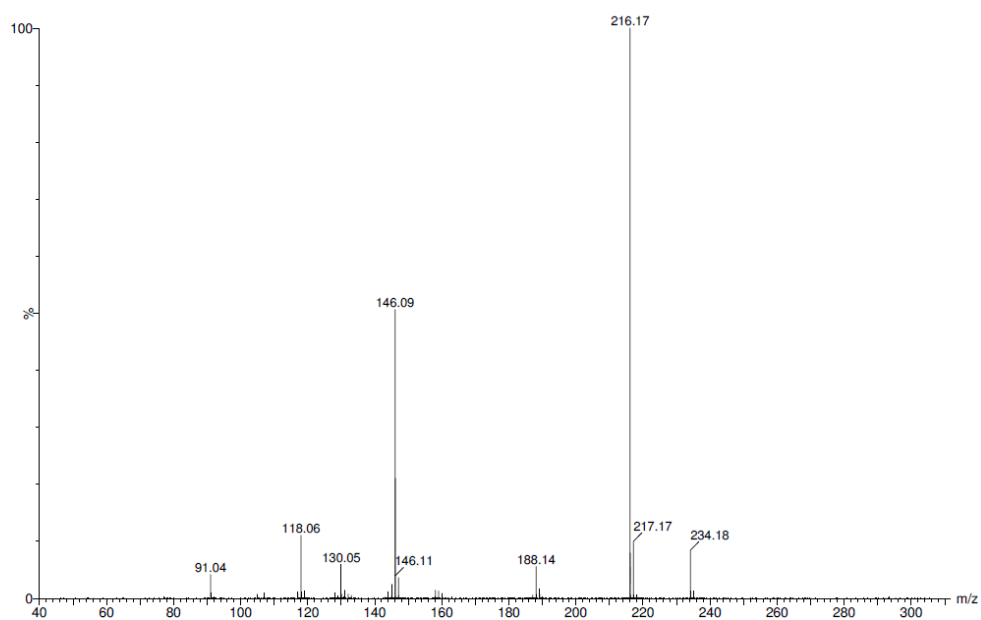


Figure S2 ESI-MS/MS spectrum of compound **2** (N-ethylheptedrone)

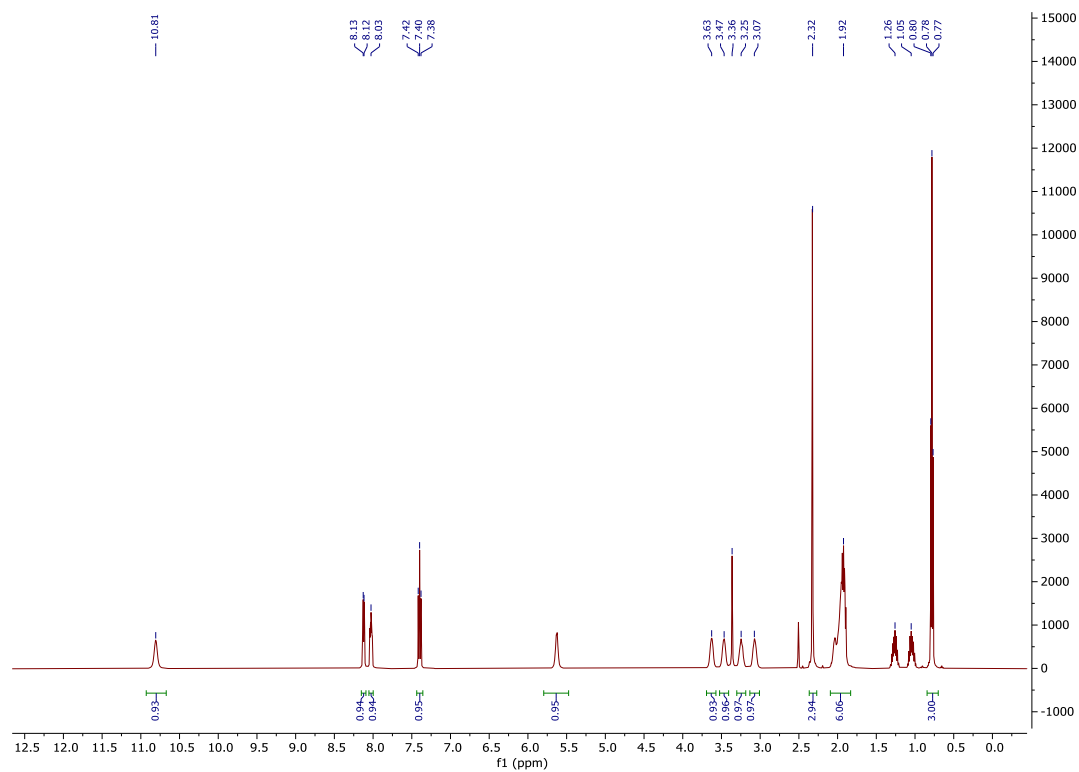


Figure S3 ¹H nuclear magnetic resonance spectrum of compound **1** (4F-3Me- α -PVP)

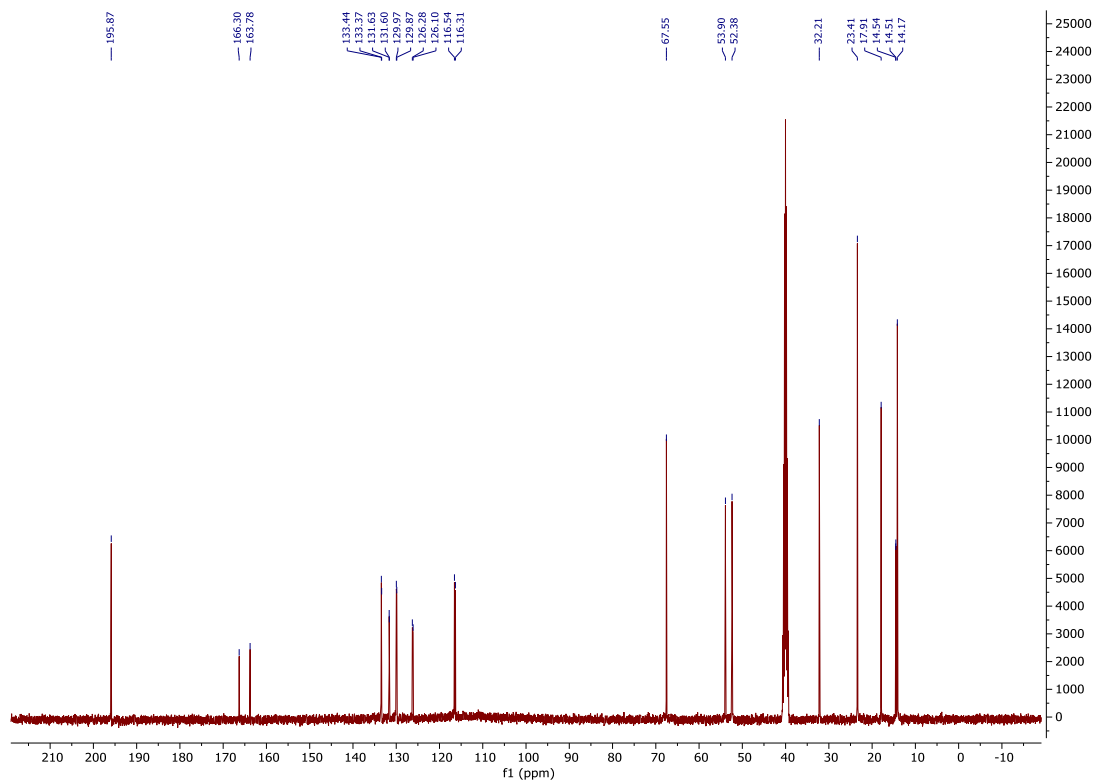


Figure S4 ¹³C nuclear magnetic resonance spectrum of compound **1** (4F-3Me- α -PVP)

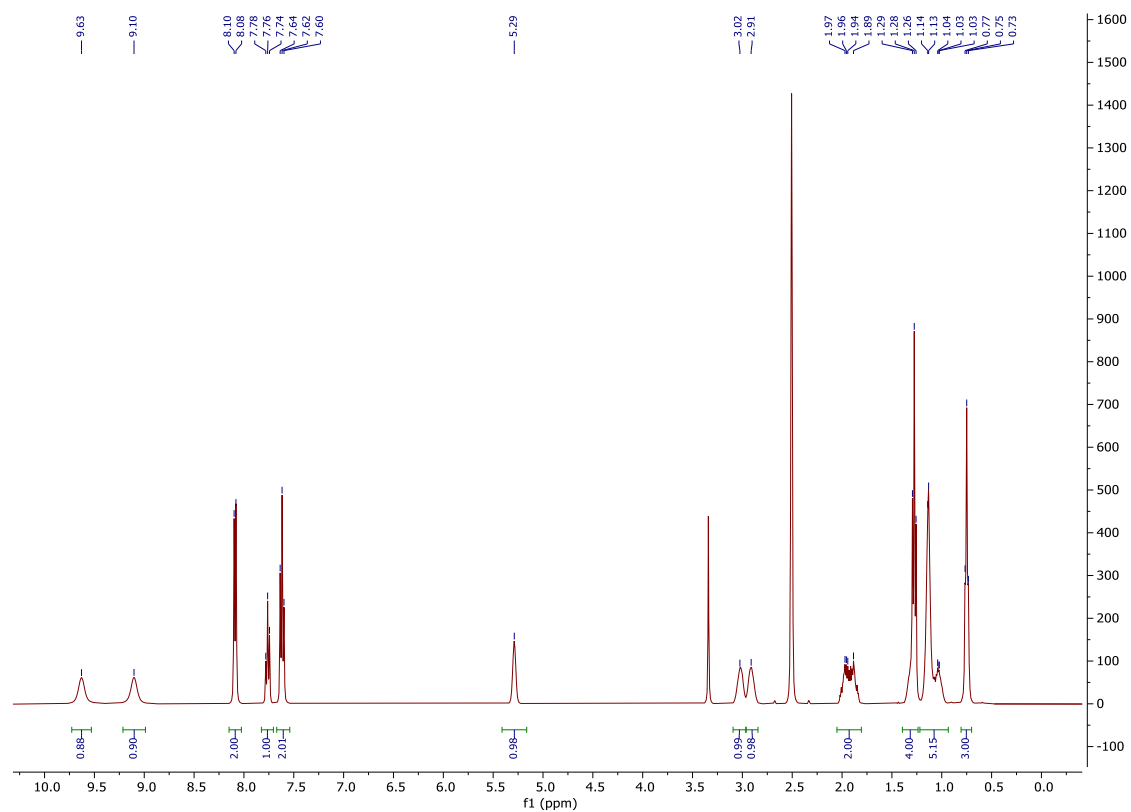


Figure S5 ¹H nuclear magnetic resonance spectrum of compound **2** (N-ethylheptedrone)

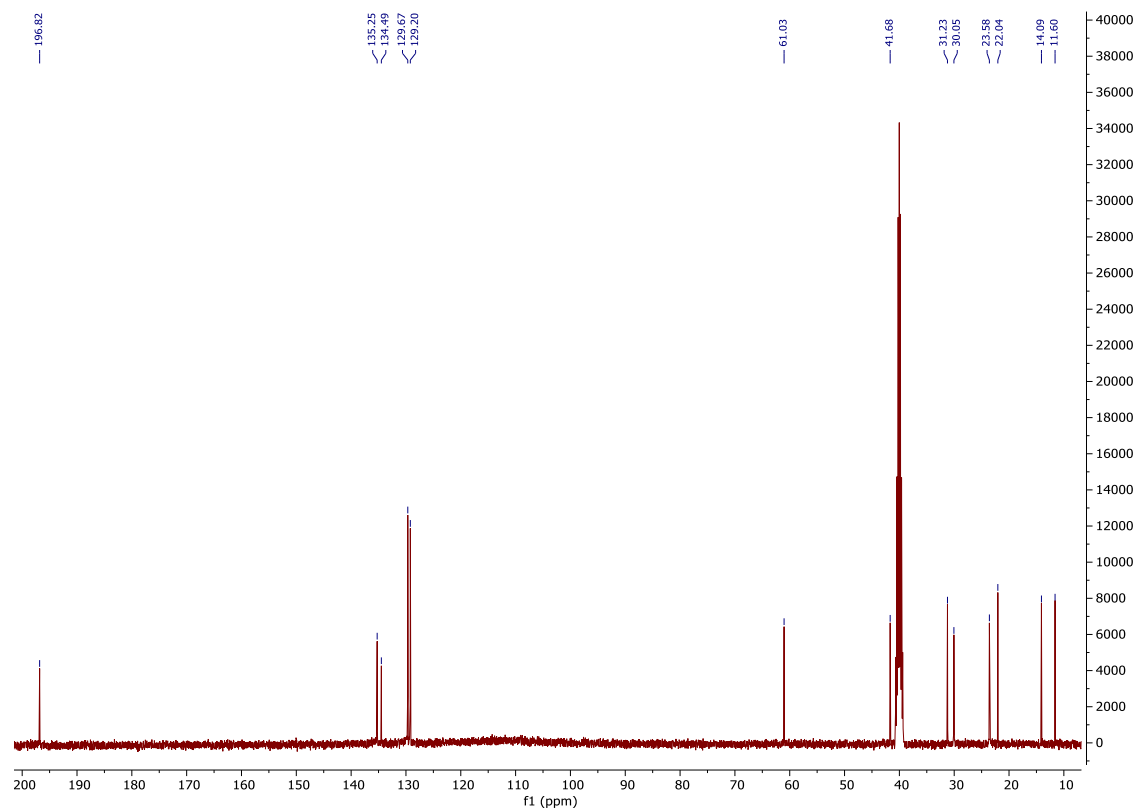


Figure S6 ¹³C nuclear magnetic resonance spectrum of compound **2** (N-ethylheptedrone)

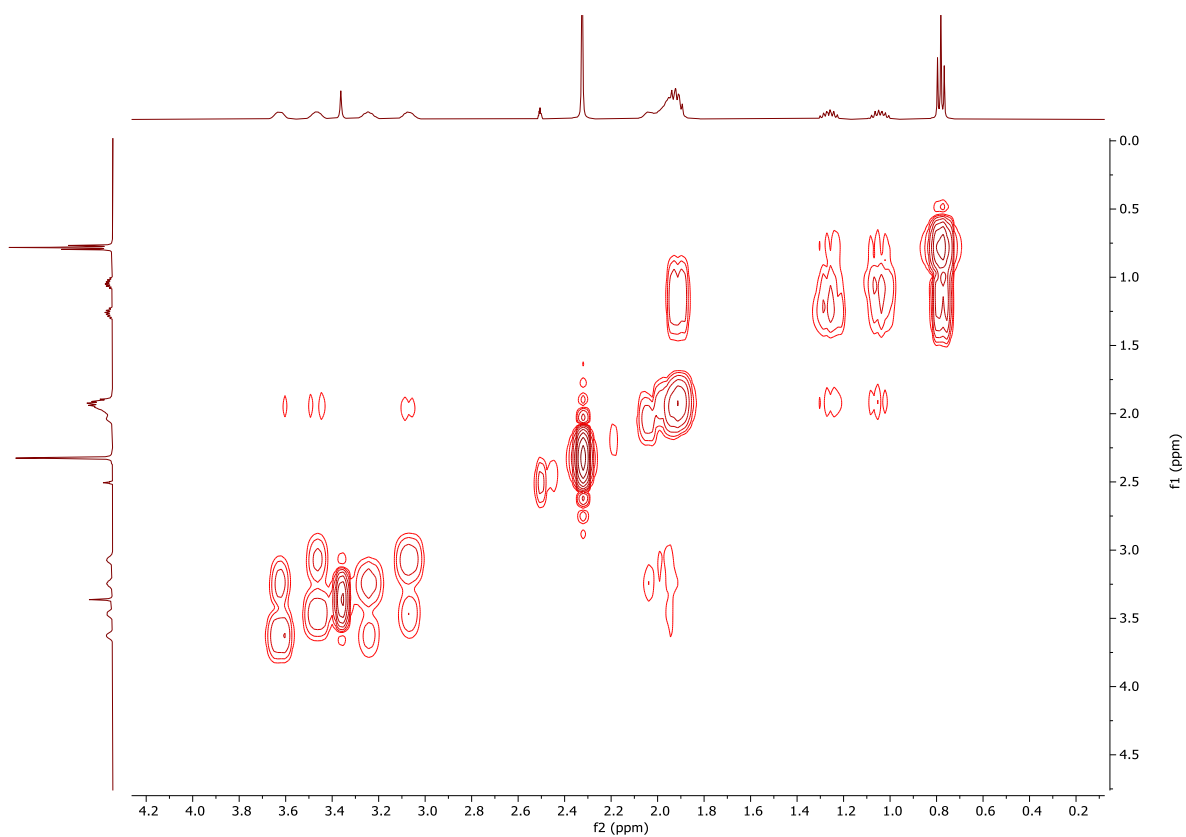


Figure S7 ^1H - ^1H COSY nuclear magnetic resonance spectrum of compound **1** (4F-3Me- α -PVP) – aliphatic fragment

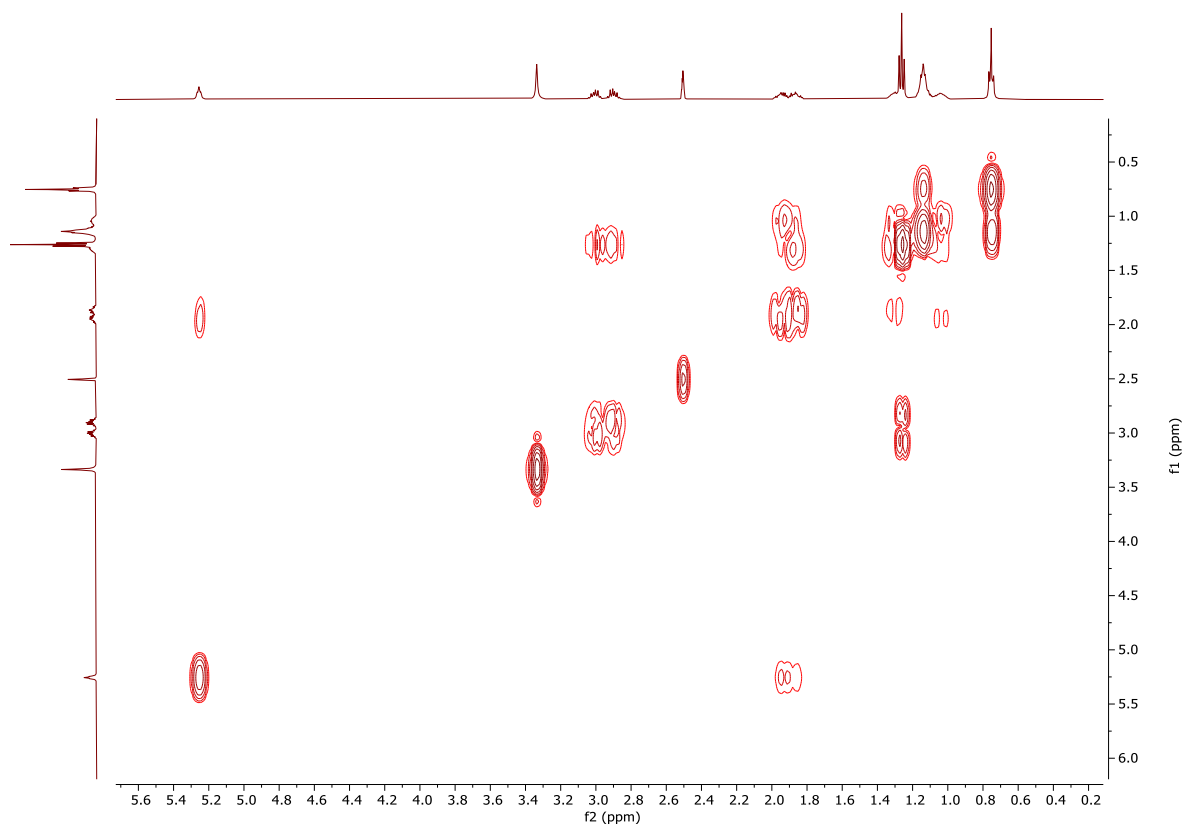


Figure S8 ^1H - ^1H COSY nuclear magnetic resonance spectrum of compound **2** (N-ethylheptedrone) – aliphatic fragment

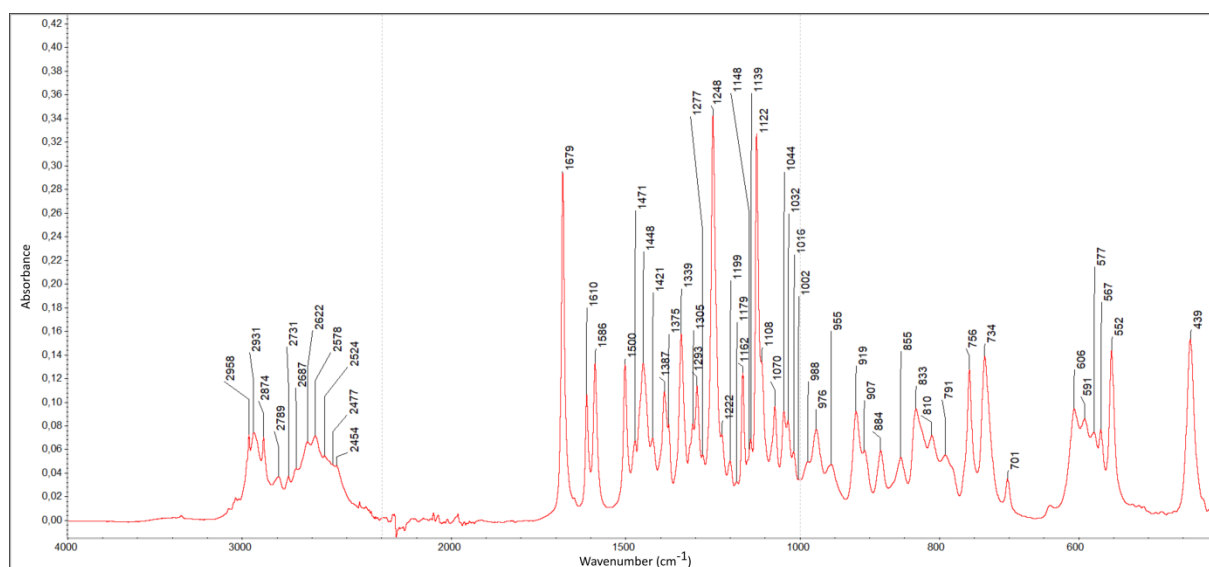


Figure S9 IR spectrum of compound **1**

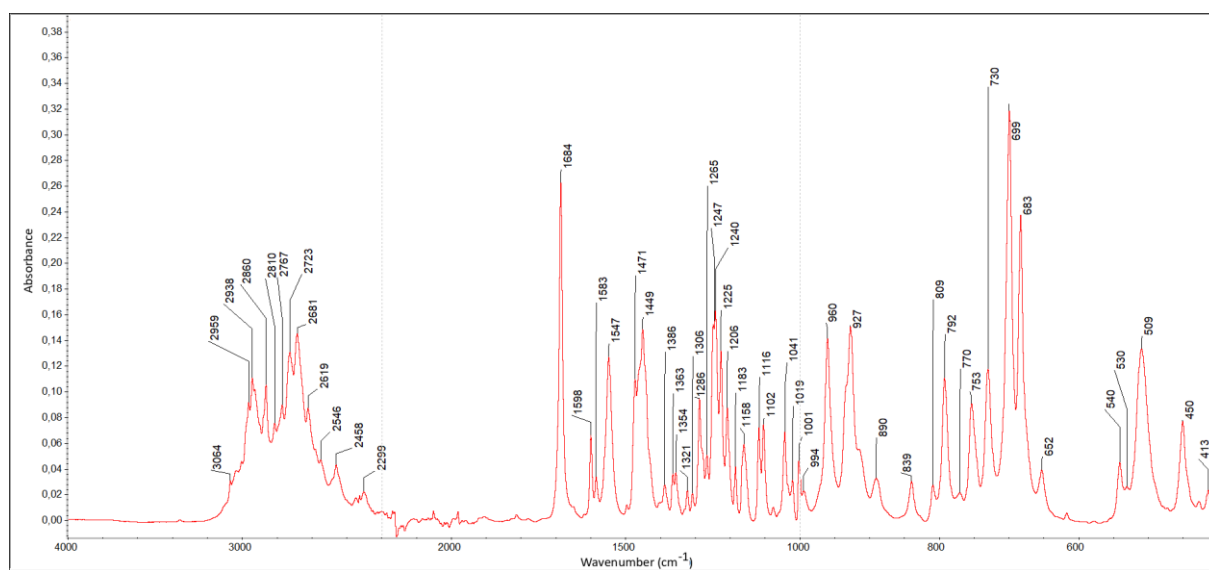


Figure S10 IR spectrum of compound **2**

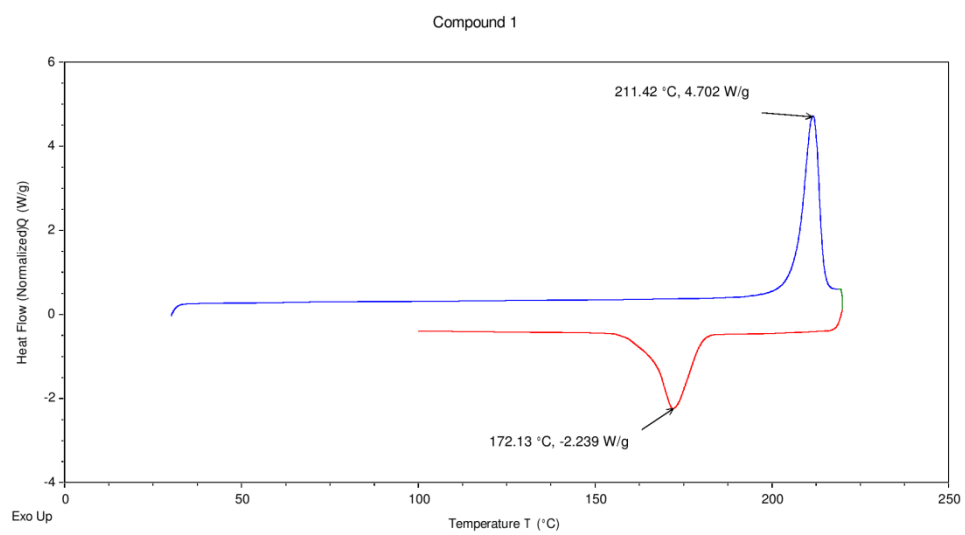


Figure S11 DSC of compound **1**

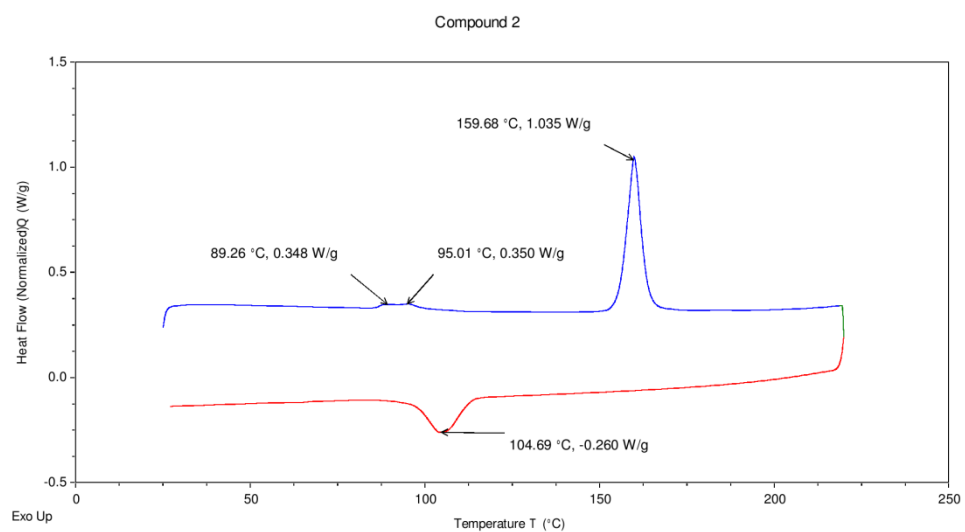


Figure S12 DSC of compound 2

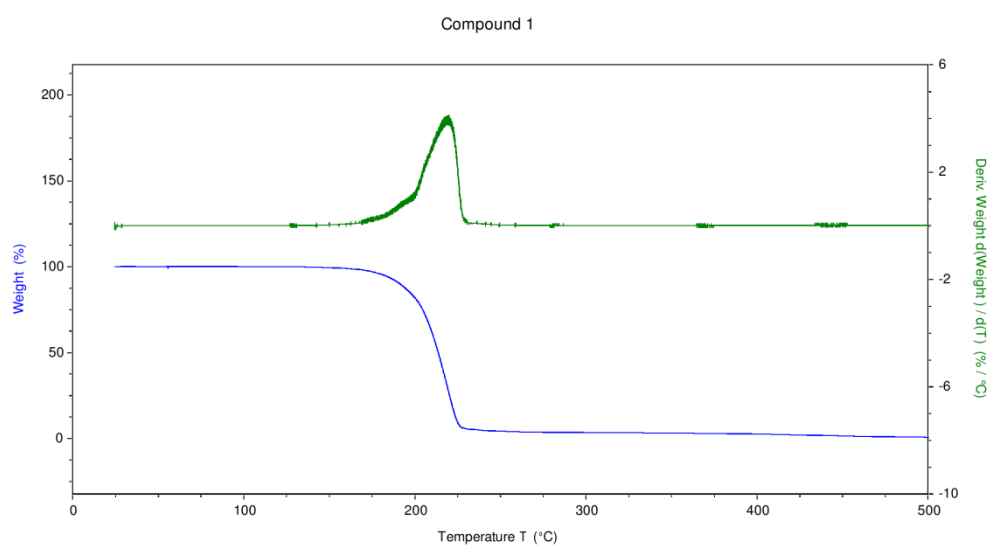


Figure S13 TGA of compound **1**

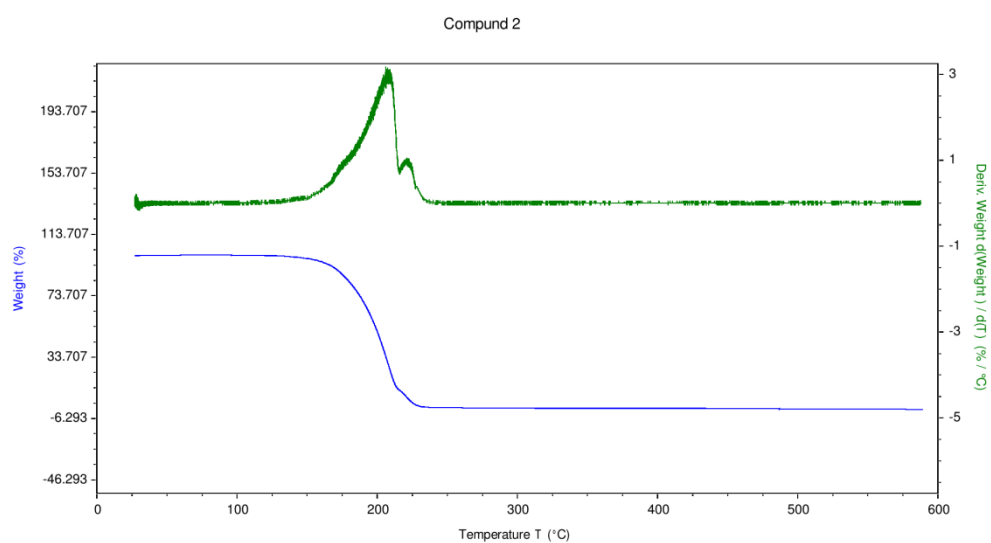


Figure S14 TGA of compound **2**