

# Spatially Engraving Morphological Structure on a Polymeric Surface by Ion Beam Milling

Ansuo Sun <sup>1</sup>, Ding Wang <sup>1</sup>, Honghao Zhou <sup>1</sup>, Yifan Li <sup>1</sup>, Chris Connor <sup>1</sup>, Jie Kong <sup>3,\*</sup>, Jining Sun <sup>2,\*</sup> and Ben B. Xu <sup>1,\*</sup>

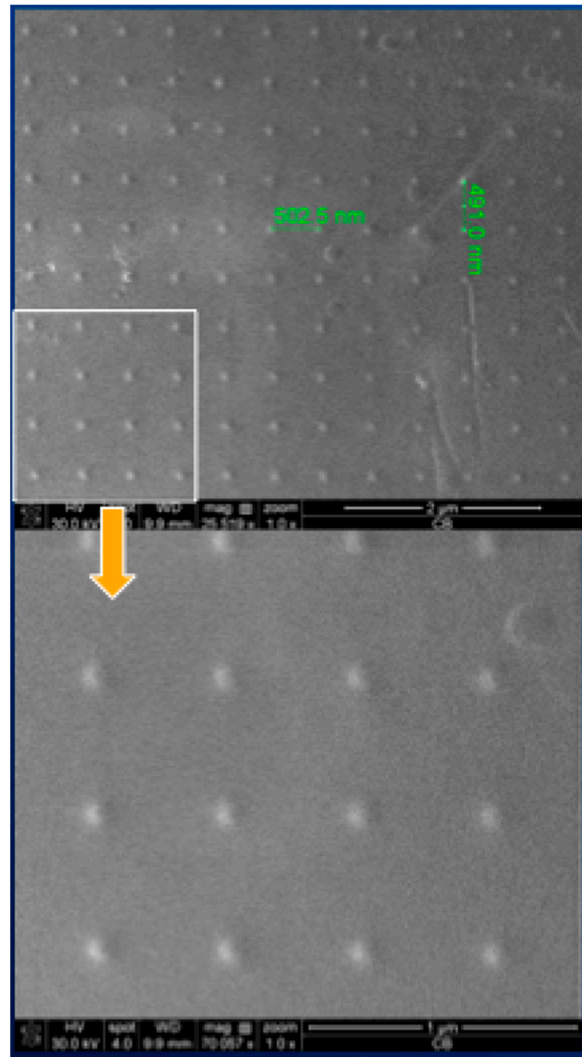
<sup>1</sup> Mechanical and Construction Engineering, Faculty of Engineering and Environment, Northumbria University, Newcastle upon Tyne, NE1 8ST, UK;

<sup>2</sup> School of Engineering and Physical Sciences, Heriot-Watt University, Edinburgh, UK;

<sup>3</sup> MOE Key Laboratory of Materials Physics and Chemistry in Extraordinary Conditions, Shaanxi Key Laboratory of Macromolecular Science and Technology, School of Science, Northwestern Polytechnic University, Xi'an, 710072, P. R. China.

\* Correspondence: ben.xu@northumbria.ac.uk; jining.sun@hw.ac.uk; kongjie@nwpu.edu.cn;

**Keywords:** Ion beam milling, Topological surface, Wetting, Contact angle hysteresis



**Fig S1.** FIB milled nano hole array for surface wetting control