

SUPPLEMENTARY MATERIAL

In Vitro Models for the Development of Peripheral Nerve Conduits, Part I: Design of a Fibrin Gel-Based Non-Contact Test

Paola De Stefano ^{1*}, Angelica Silvia Federici ^{1,2} and Lorenza Draghi ^{1,2}

¹ Department of Chemistry, Materials and Chemical Engineering “G. Natta”, Politecnico di Milano, via Mancinelli 7, 20131 Milan, Italy;

² INSTM – National Interuniversity Consortium of Materials Science and Technology, Local Unit Politecnico di Milano, P.zza Leonardo da Vinci 32, 20133 Milan, Italy;

* Correspondence: paola.destefano@polimi.it;

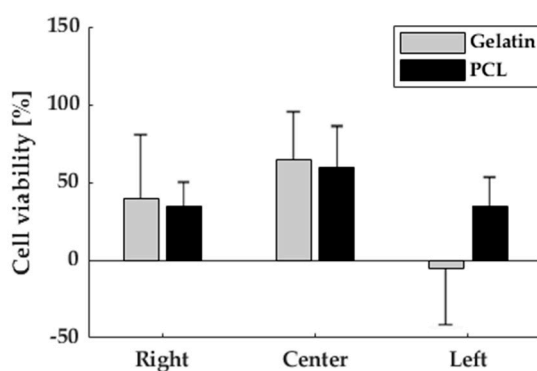


Figure S1. Cell viability evaluation along tubular NGCs scaffolds both for gelatin and PCL samples.

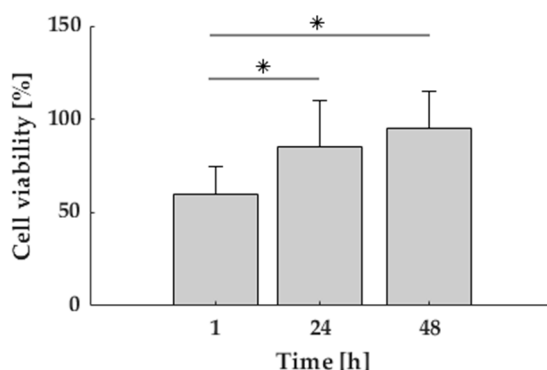


Figure S2. Sample pre-conditioning evaluation: cell viability after 1 h, 24 h and 48 h.

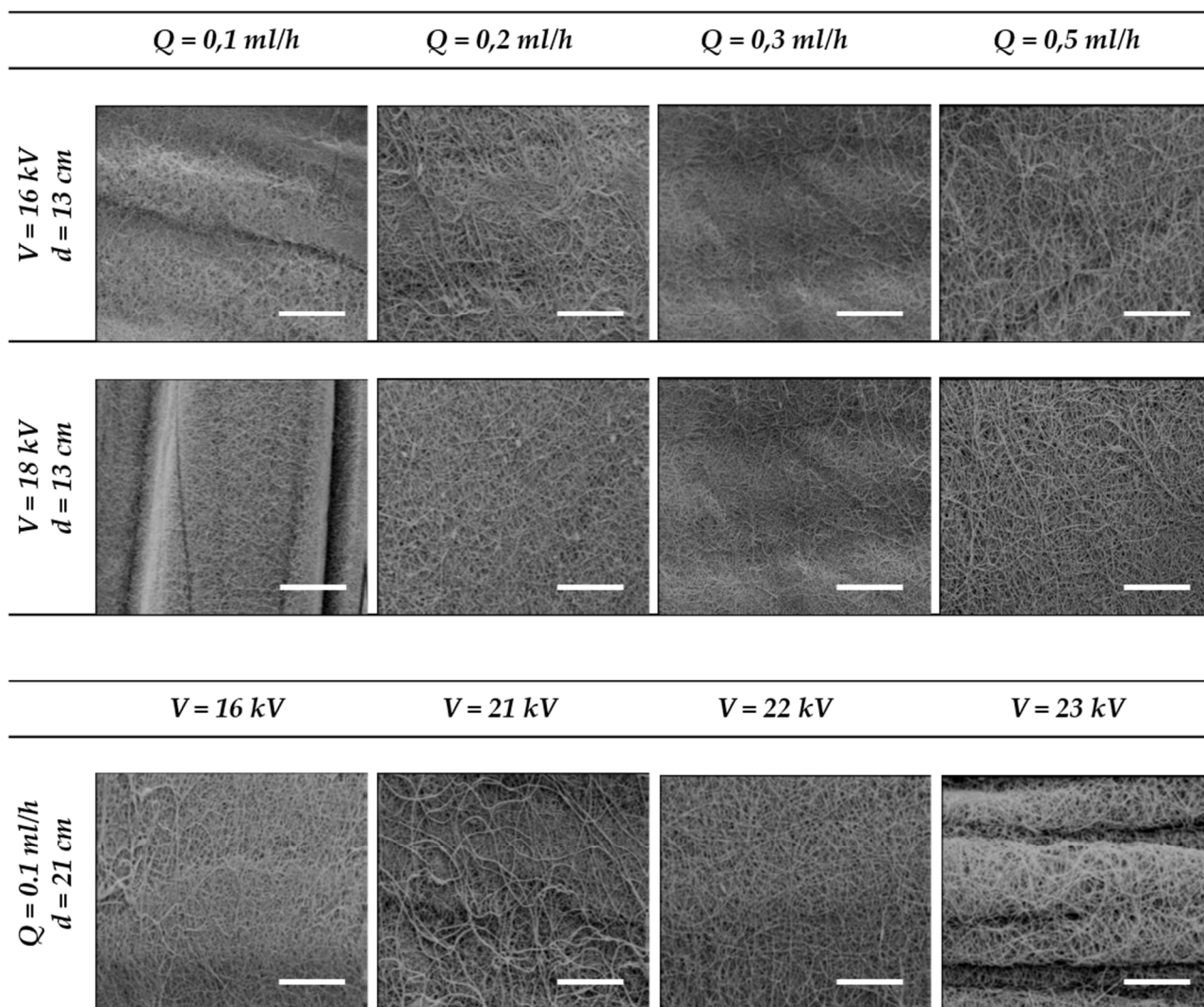


Figure S3. SEM images for gelatin NGCs. Scale bar: 20 μm .

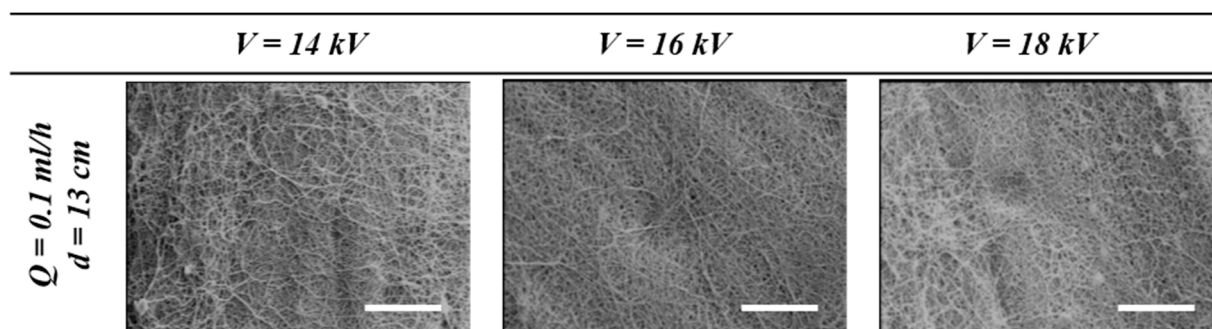


Figure S4. SEM images for PCL NGCs. Scale bar: 20 μm .