

Supplementary information

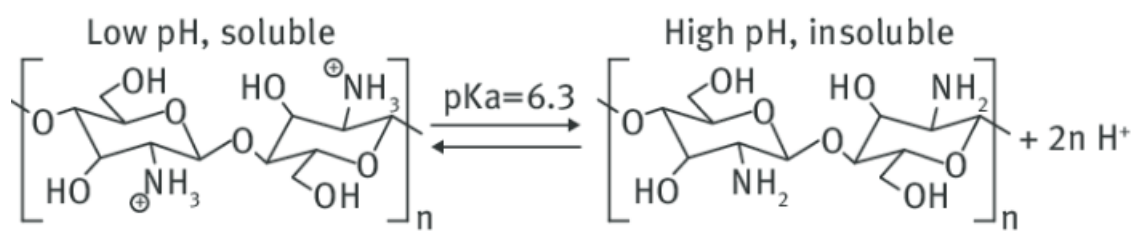


Figure S1. Scheme for the solutibization of chitosan.

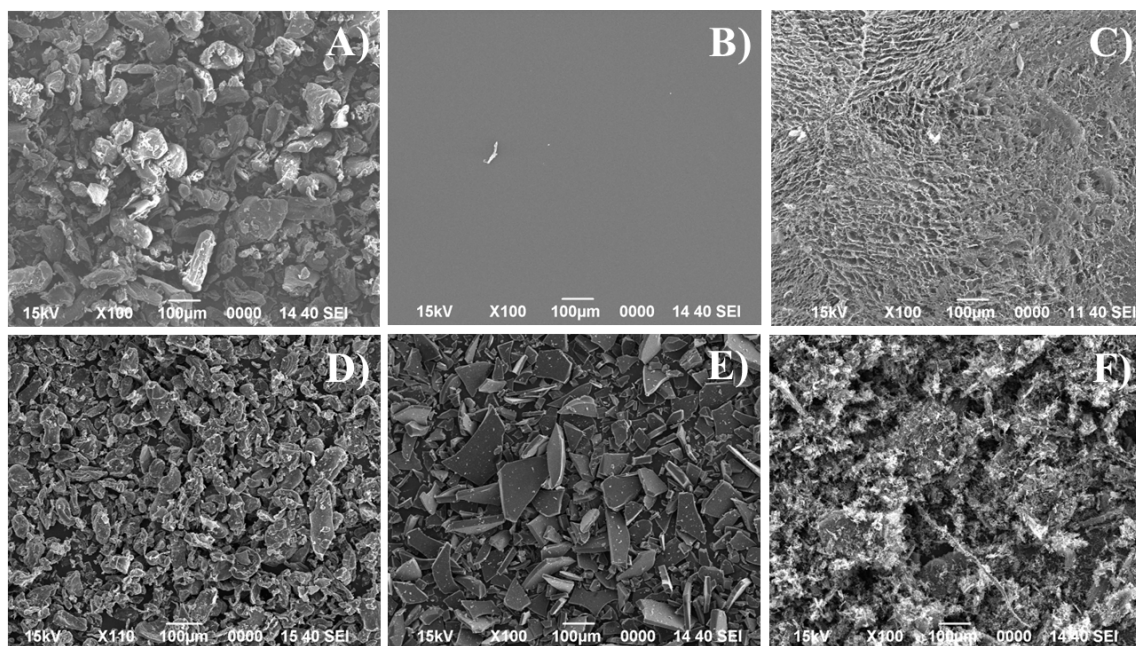


Figure S2. SEM images of Chi-P (A), Chi-F (B), Chi-G (C) and their respective samples pyrolyzed at 900 °C: Chi-P-900 (D), Chi-F-900 (E) and Chi-G-900 (F). (Scale: 100 µm).