

Article

Preventing the Collapse Behavior of Polyurethane Foams with the Addition of Cellulose Nanofiber

Sanghyeon Ju ^{1,2}, Ajeong Lee ¹, Youngeun Shin ¹, Hyekyeong Jang ¹, Jin-Woo Yi ¹, Youngseok Oh ¹, Nam-Ju Jo ^{2,*} and Teahoon Park ^{1,*}

¹ Composites Research Division, Korea Institute of Materials Science (KIMS), 797, Changwon-Daero, Seongsan-Gu, Changwon-si 51508, Republic of Korea

² School of Chemical Engineering, Pusan National University, Busan 46241, Republic of Korea

* Correspondence: namjujo@pusan.ac.kr (N.-J.J.); thpark@kims.re.kr (T.P.); Tel.: +82-055-280-3158 (T.P.)

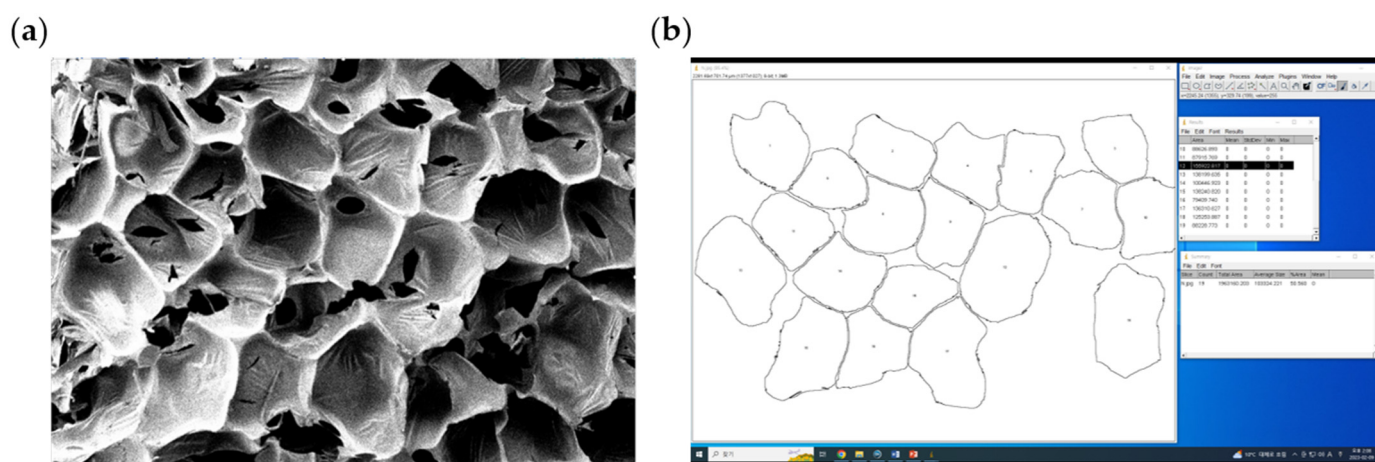


Figure S1. (a) The SEM of N, (b) Capture of measuring average cell area of N using Image J.

Figure S1 is an example of measuring the average cell area of samples using Image J freeware. Measurements were conducted without counting cells that could not be considered cells.

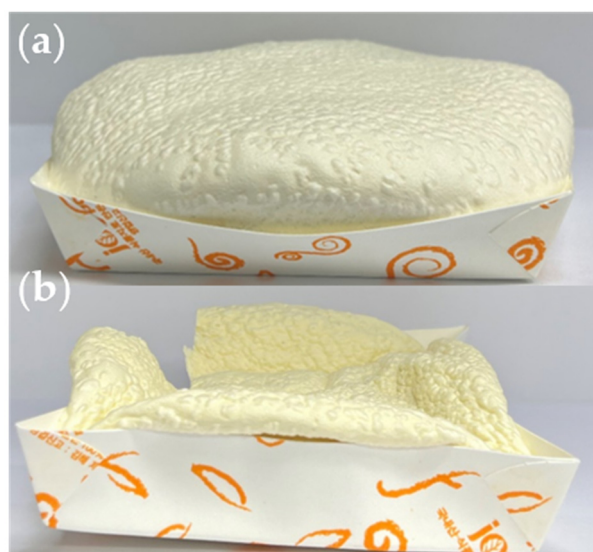


Figure S2. The picture of C3 at (a) day 1 and (b) day 14.

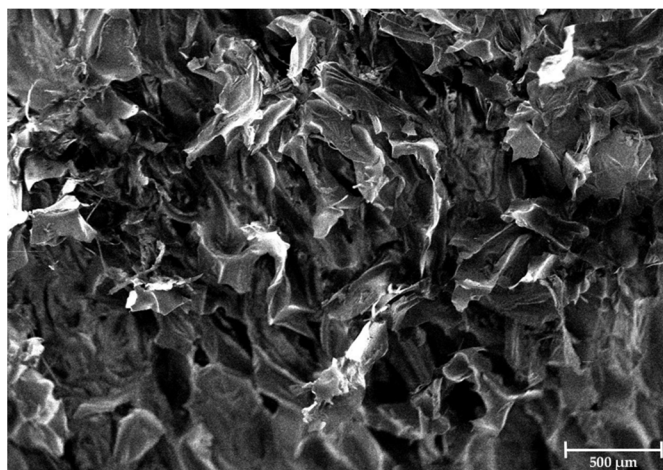


Figure S3. The SEM image of collapsed sample N.