

Supplementary Materials

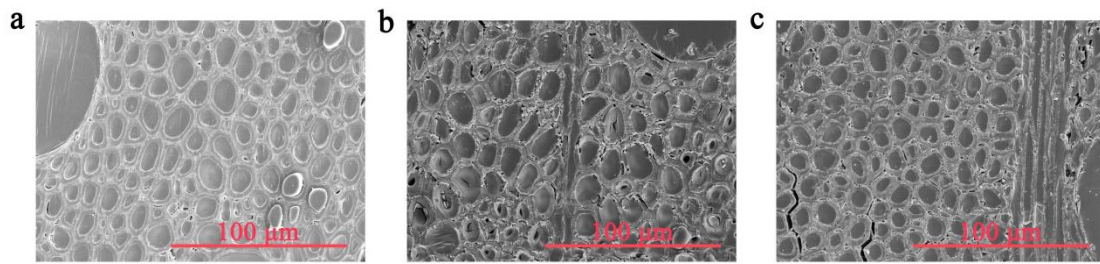


Figure S1. Morphological characterization of TWs. (a) Cross-sectional SEM images of TW90. (b) Cross-sectional SEM images of TW150; (c) Cross-sectional SEM images of TW180.

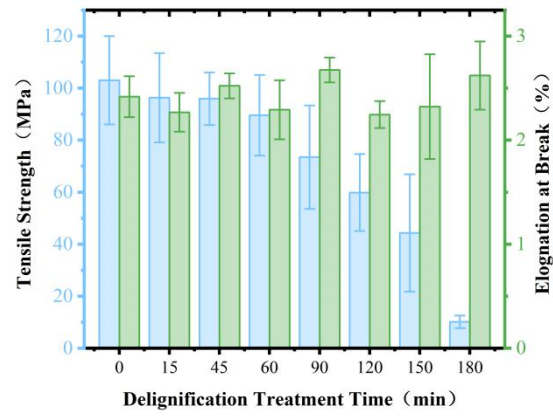


Figure S2. Tensile strength and elongation at break of DW with different degrees of delignification.

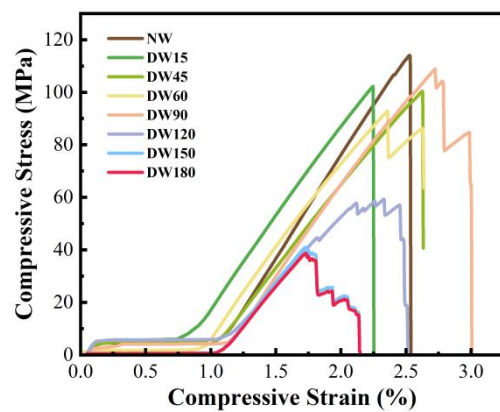


Figure S3. Stress-strain curves of DW with different degrees of delignification.

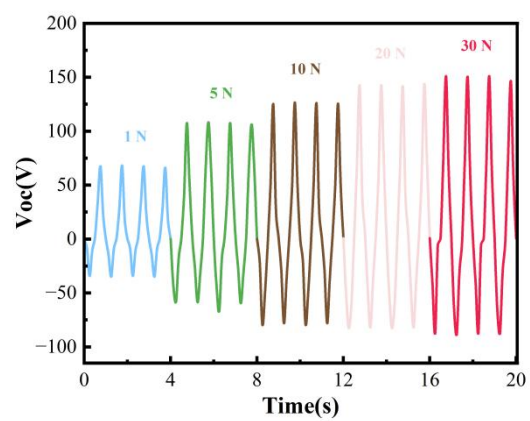


Figure S4. Open-circuit voltage of TW-TENG at different working forces.

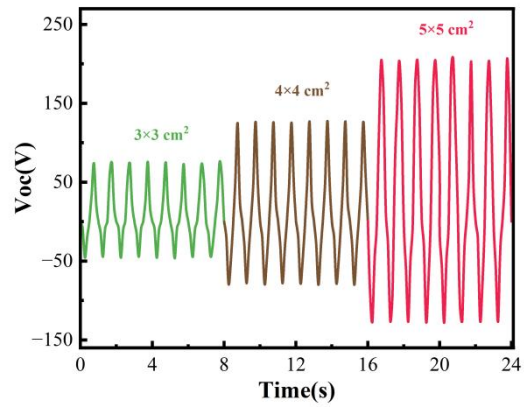


Figure S5. Open-circuit voltage of TW-TENG of different sizes.