

Supplementary Materials: *Immortal* Ring-Opening Polymerization of *rac*-Lactide Using Polymeric Alcohol as Initiator to Prepare Graft Copolymer

Na Liu, Bo Liu, Changguang Yao and Dongmei Cui

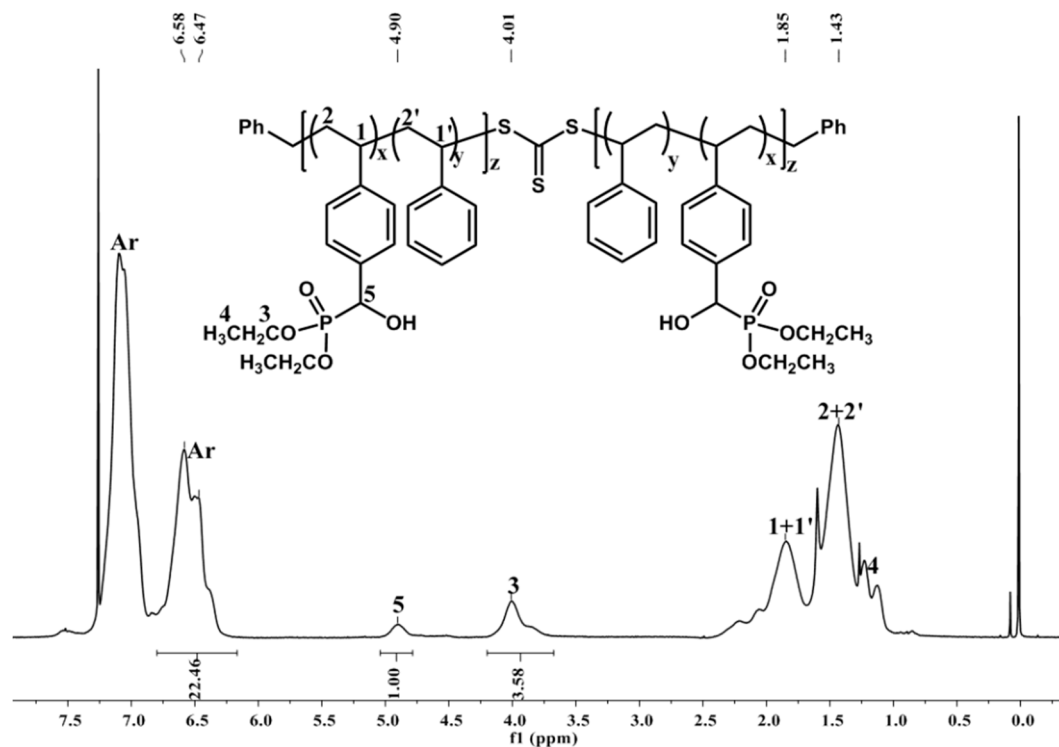


Figure S1. ^1H NMR spectrum (400 MHz, CDCl_3 , 298 K) of the PS-OH ($M_n = 8800 \text{ g}\cdot\text{mol}^{-1}$, PDI = 1.14).

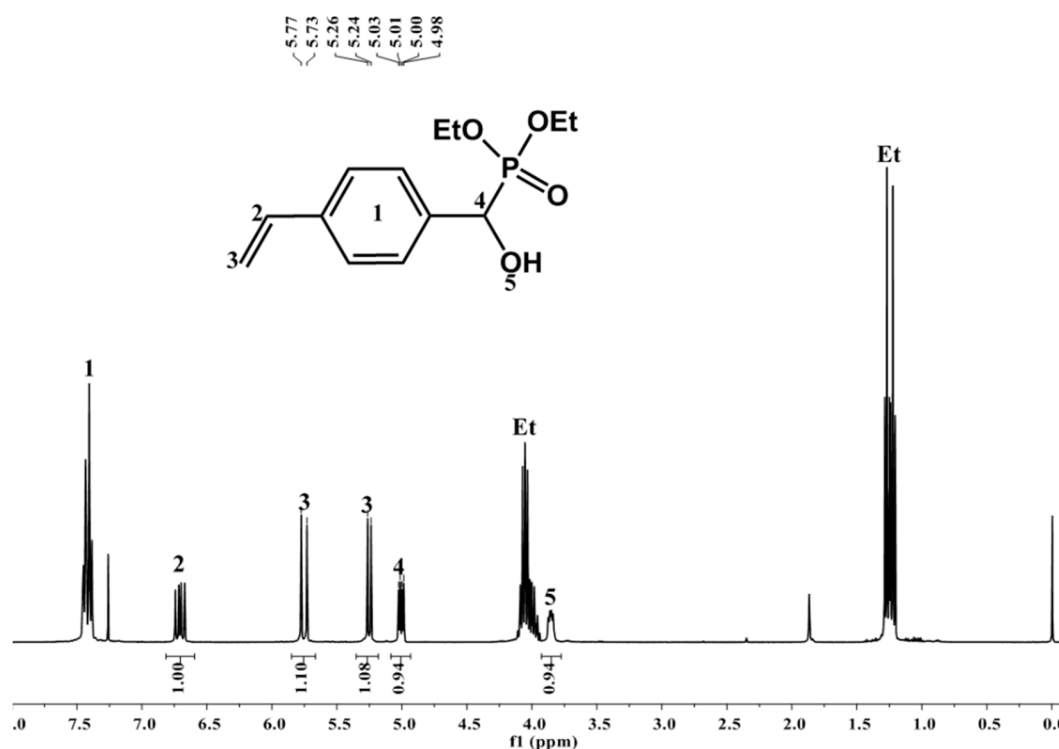


Figure S2. ^1H NMR spectrum (400 MHz, CDCl_3 , 298 K) of the St-OH.

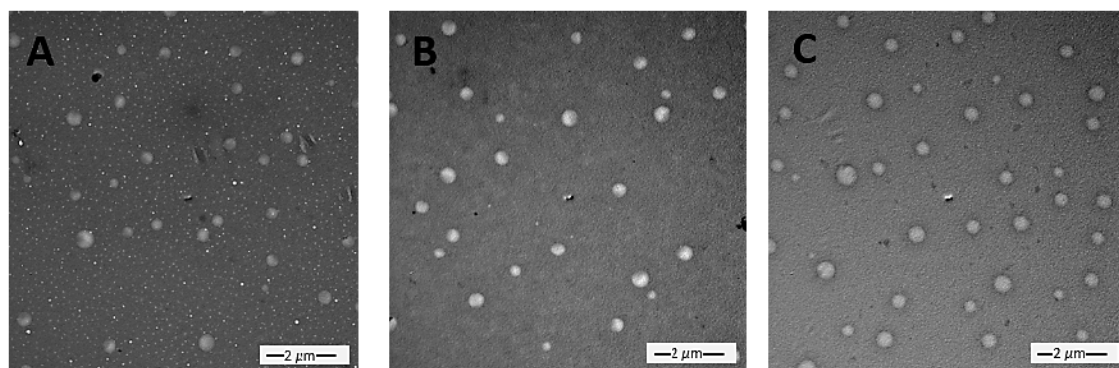


Figure S3. TEM images of the PS-g-PLA with different graft lengths after etching: (A) PS_{8.6}-g-PLA₅ (Table 2, entry 5); (B) PS_{8.6}-g-PLA₁₀ (Table 2, entry 2); (C) PS_{8.6}-g-PLA₂₀ (Table 2, entry 6). Conditions: accelerating voltage: 100 kV; amplification factor: 15,000.



© 2016 by the authors; licensee MDPI, Basel, Switzerland. This article is an open access article distributed under the terms and conditions of the Creative Commons by Attribution (CC-BY) license (<http://creativecommons.org/licenses/by/4.0/>).