

Supplementary Figures

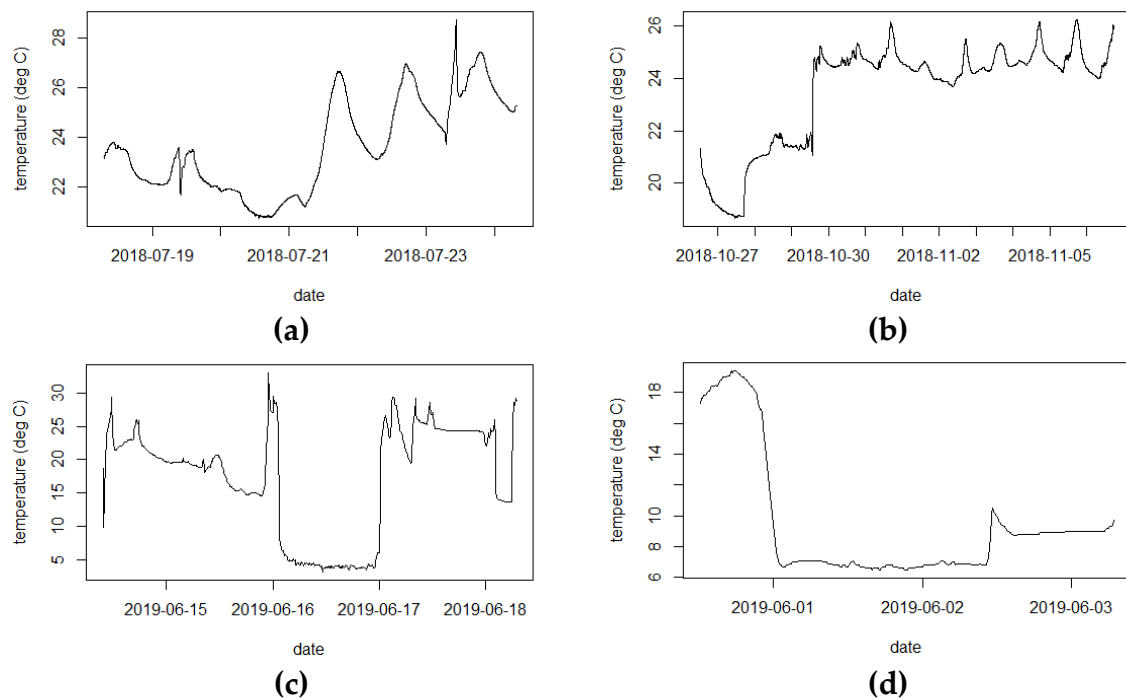


Figure S1. Logged temperatures during commercial transport. **(a)** Phalaenopsis (from Slovakia to Belgium, July); **(b)** Phalaenopsis (from Slovakia to Belgium, October-November); **(c)** Chrysanthemum (from Belgium to China, June); **(d)** Chrysanthemum (from Belgium to Spain, June). **(a)**, **(b)**, and **(d)** are temperature-controlled during the whole transport. **(c)** is only transported under controlled temperature during a part of the transport.