

Supplementary Material

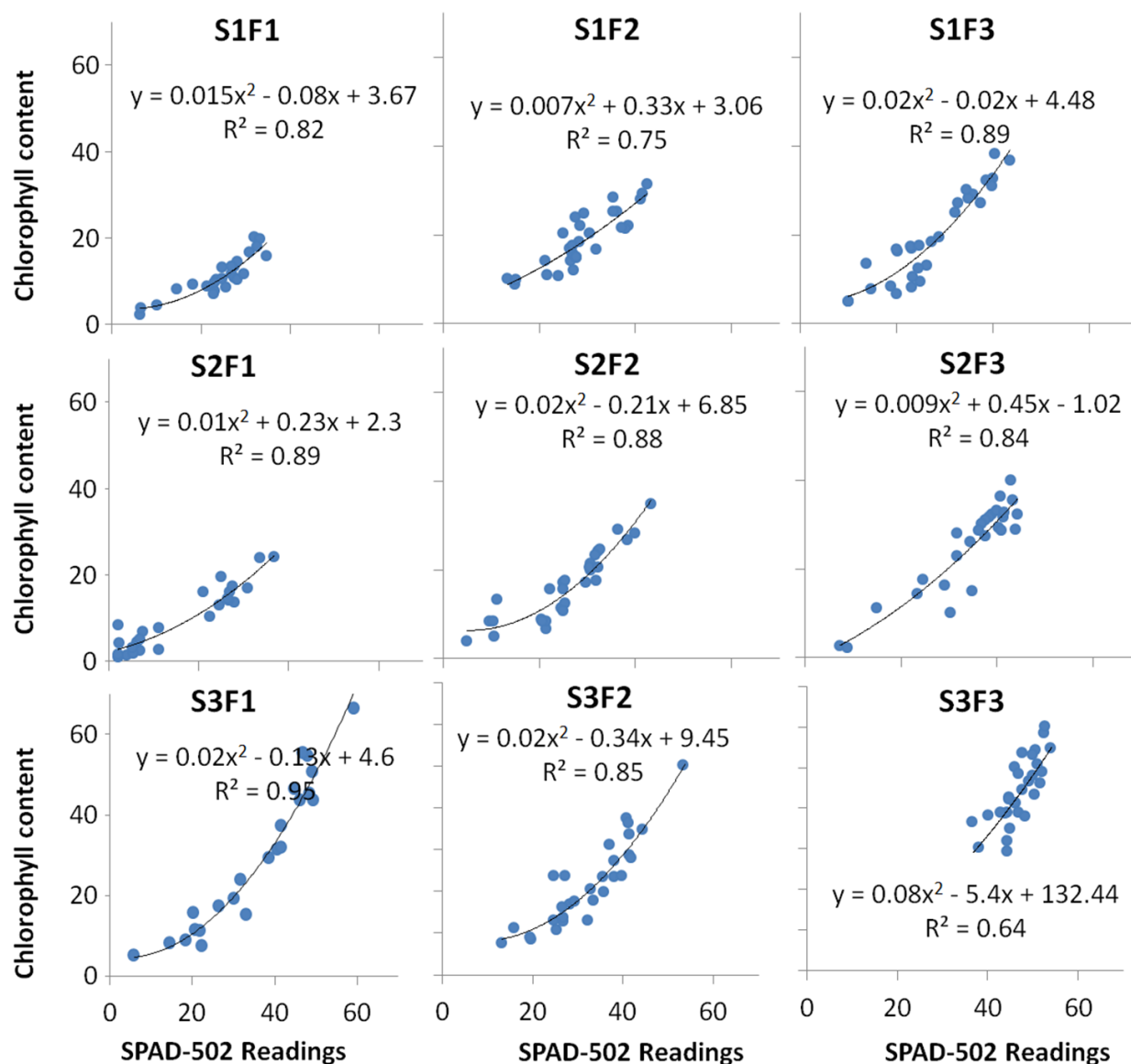


Figure S1. Relationships between leaf SPAD-502 readings and the chlorophyll contents in wheat grown at various levels of salinity and fertilizer application. Second order polynomial curve was fitted to the data ($n=30$ in each case). Each curve represents data obtained from a combination of salinity (S) and fertilizer (F) treatment. S1, S2 and S3 denote no-salinity, 7.0 dSm^{-1} and 14 dSm^{-1} salinity level, respectively. F1, F2 and F3 shows no-fertilizer, full dose and double dose of the recommendation for wheat crop.

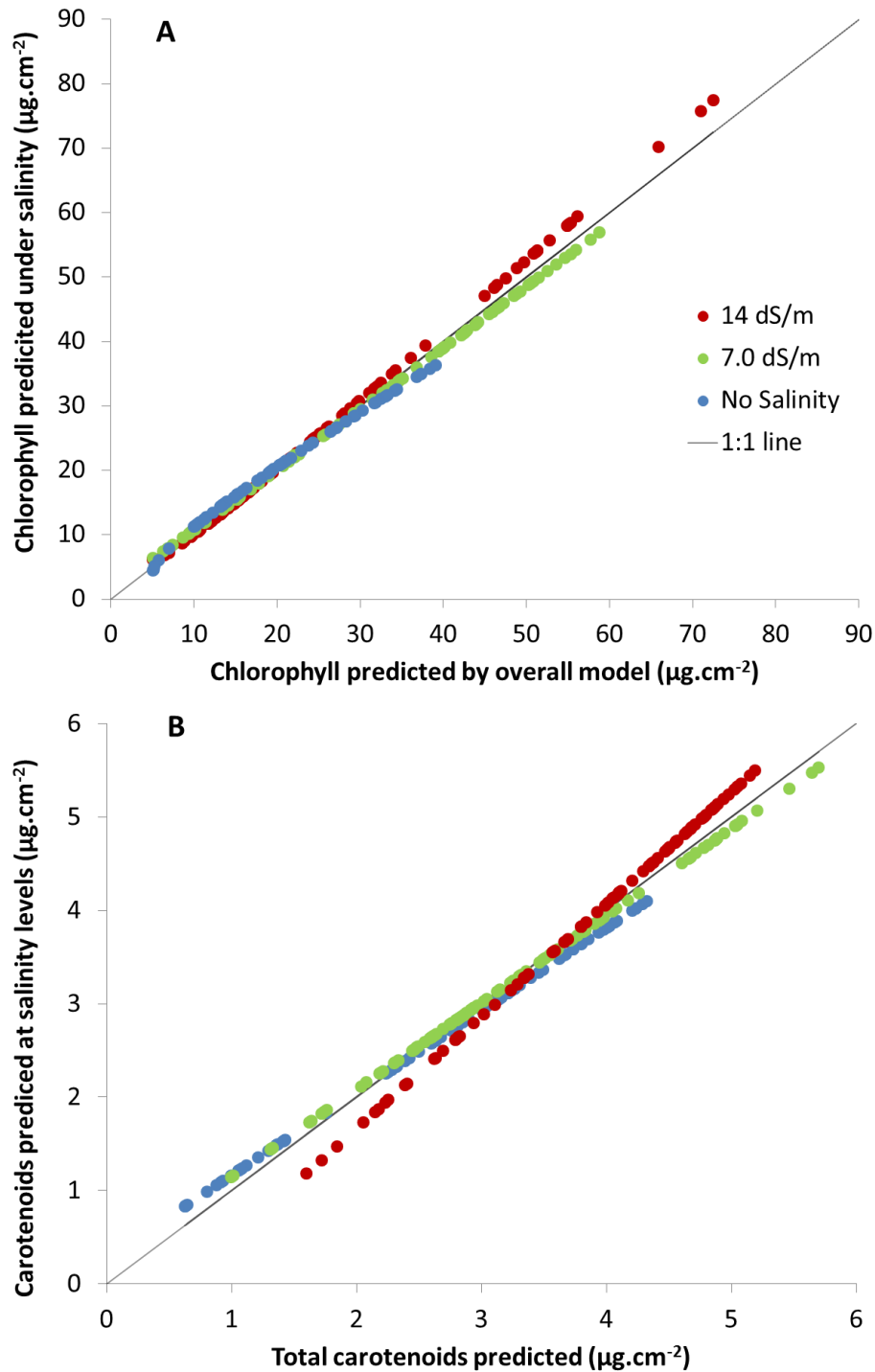


Figure S2. Plot of values obtained from generalized and salinity specific regression models showing the relationship between *Chlt* predicted. Markers with different colors show values predicted using regression model developed for different salinity levels.

Table S1. Increase/decrease of the pigments contents (%) by various treatment combinations relative to the control basal treatment.

Treatments Variables		S1		S2		S3		F1		F2		F3	
		F2-F1	F3-F1	F2-F1	F3-F1	F2-F1	F3-F1	S2-S1	S3-S1	S2-S1	S3-S1	S2-S1	S3-S1
	SPAD	16.2	33.7	25.3	37.3	32.4	47.1	56.2	100.0	12.8	35.3	10.7	39.8
Contents per leaf area	Chla	66.7	144.9	75.0	226.3	31.8	103.2	10.1	127.5	15.7	80.0	46.7	88.8
	Chlb	64.5	122.6	24.4	137.8	37.7	98.4	45.2	96.8	9.8	64.7	55.1	75.4
	Ct	58.8	100.0	54.5	77.3	12.5	53.1	29.4	88.2	25.9	33.3	14.7	44.1
	Chlt	63.0	138.0	59.3	200.0	33.0	100.9	18.0	118.0	15.3	77.9	48.7	84.0
Amount per plant	Chla	126.0	284.5	129.4	359.4	94.4	353.5	-31.7	-33.6	-29.7	-13.3	-10.2	-55.4
	Chlb	68.7	164.2	63.1	234.7	103.0	342.7	-32.1	-104.4	-36.6	-22.0	-4.3	-69.8
	Ct	115.4	214.0	102.6	149.6	65.8	213.9	-12.1	-61.5	-19.1	-61.6	-41.0	-109.8
	Chlt	121.1	273.6	108.8	322.3	96.1	348.4	-22.9	-39.5	-30.1	-16.2	-8.7	-57.2

F1= no-fertilizer application (fertilizer control), F2= full recommended dose fertilizer, F3 = double of recommended the recommended dose, S1 = zero-salinity treatment, S2 = 7.0 dSm-1 salinity level, S3 = 14 dSm-1 salinity level, Chla = Chlorophyll 'a' content, Chlb = Chlorophyll 'b' content, Chlt = total chlorophyll content, Ct = carotenoid content