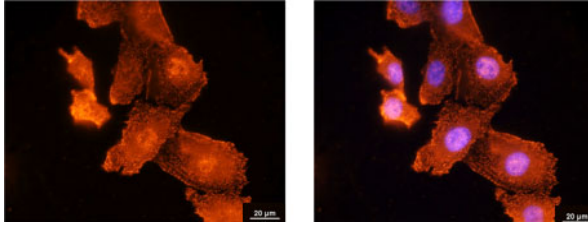
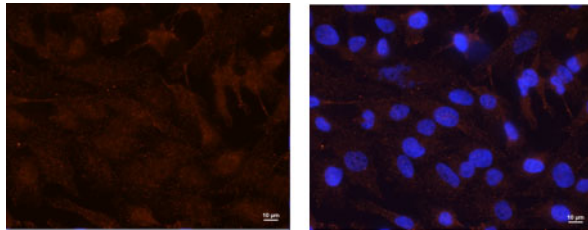


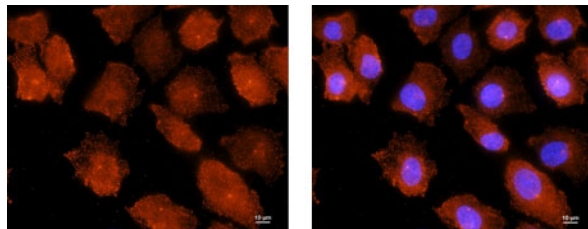
8505C



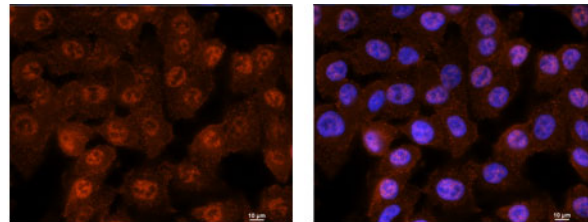
CAL-62



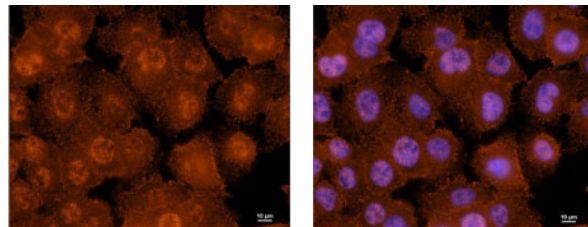
FTC-133



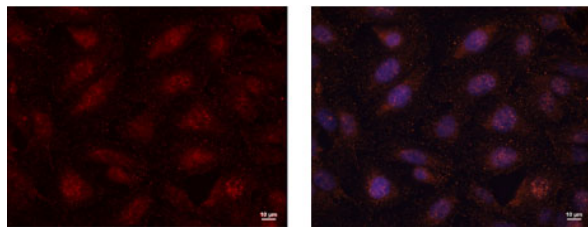
TT269CO2



TPC-1



BCPAP



Supplementary Data: Evaluation of Gal-1 expression by immunofluorescence and confocal microscopy. Anti-Gal-1 antibodies were used to detect Gal-1 protein (red staining) in anaplastic cell lines (8505C, CAL-62), follicular thyroid cancer cell lines (FTC-133, TT2609CO2) and papillary thyroid cancer cell lines (TPC-1, BCPAP). DAPI was used to detect nucleus (blue staining).