

Supplementary

Figure S1: The electron image of placental micro-EVs (A) and nano-EVs (B)

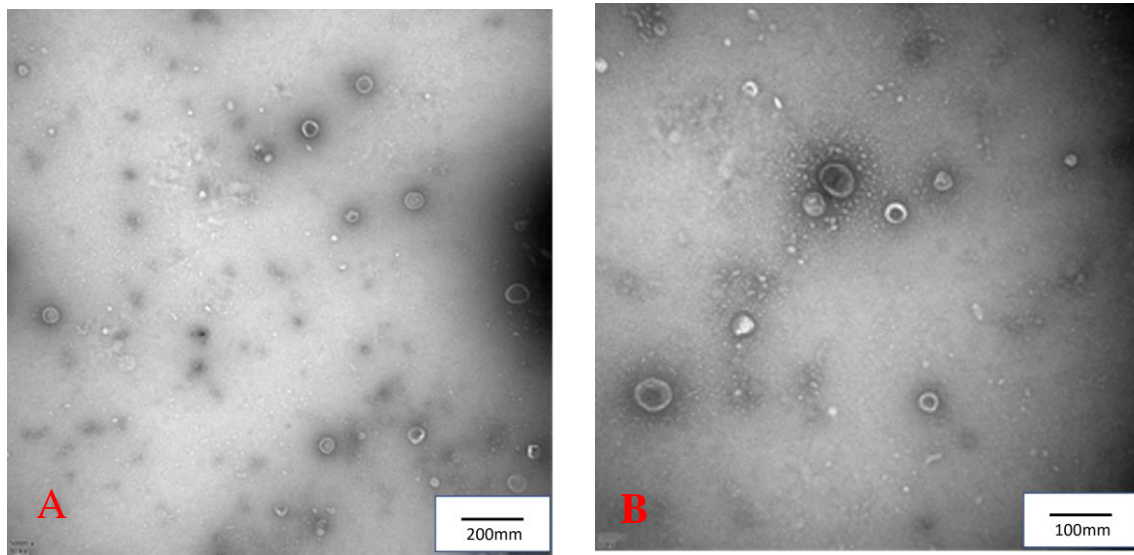
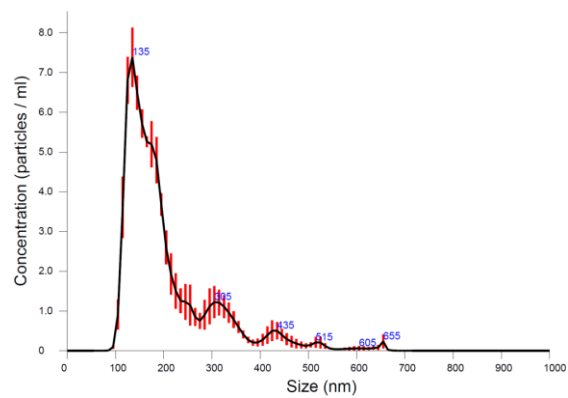


Figure S2: The size of micro-EVs and nano-EVs is confirmed by Nanosight NS300 (Malvern Panalytical, Almelo, The Netherlands).

Micro-EVs



Nano-EVs

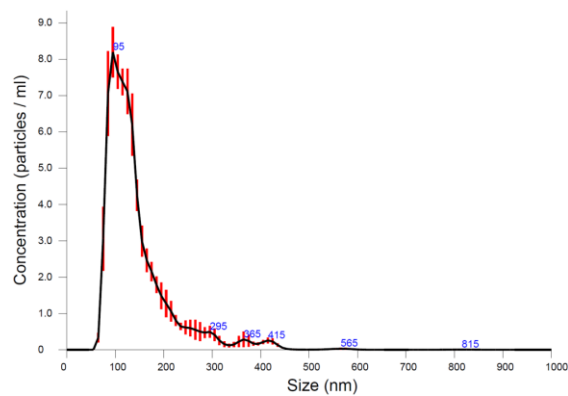


Figure S3: The characterisations of placental micro-EVs and nano-EVs are also confirmed by measuring EV specific surface proteins, CD81 and pan cytokeratin. No expression of vimentin in placental micro- and nano-EVs suggests the trophoblastic origin of vesicles obtained from cultured placental explants.

