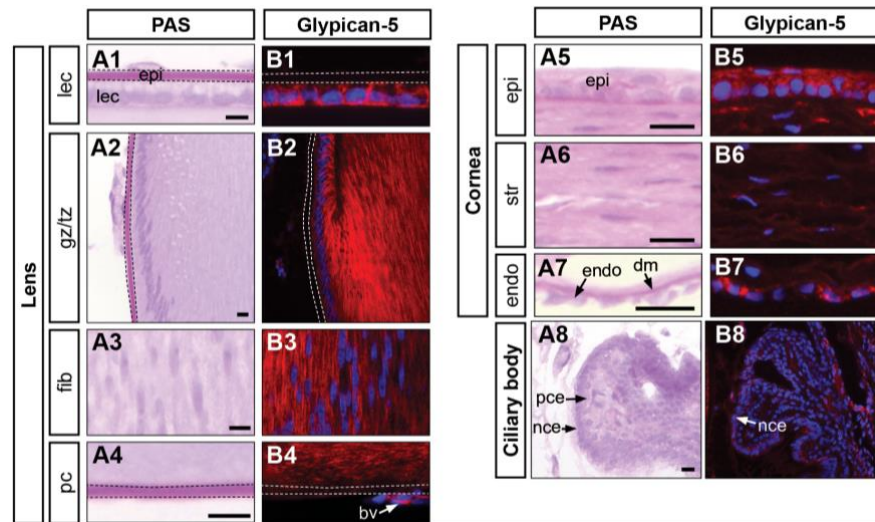


Table S1. Primary antibodies used for GAG and core protein immunolocalisation.

	Target	Antibody
Sulfation Enzyme	PAPSS2	pAb, Rb IgG Abcam, Cat#: ab155588
Sulfated GAGs	Heparan sulfate (HS-GAG)	mAb (F58-10E4) Ms IgMκ Amsbio, Cat#: 370255-1
	Chondroitin Sulfate (CS-GAG)	mAb (CS-56), Ms IgM Sigma, Cat#: C8035
HSPG Core Protein	Syndecan-1 (CD138)	pAb, Ms IgG1κ Santa Cruz Biotechnology, Cat#: sc-12765
	Syndecan-2	mAb (F-5), Ms IgG1κ Santa Cruz Biotechnology, Cat#: sc-376160
	Syndecan-3	mAb (G-2), Ms IgMκ Santa Cruz Biotechnology, Cat#: sc-398194
	Syndecan-4	pAb, Rb IgG Abcam, Cat#: ab24511
	Glypican-1	mAb (A-10), Ms IgG1κ Santa Cruz Biotechnology, Cat#: sc-365000
	Glypican-2	mAb (F-5), Ms IgG1λ Santa Cruz Biotechnology, Cat#: sc-393824
	Glypican-3	mAb (F-3), Ms IgM Santa Cruz Biotechnology, Cat#: sc-390587
	Glypican-4	pAb, Rb IgG Invitrogen, Cat#: PA5-88766
	Glypican-5	mAb (F-3), Ms IgG1κ Santa Cruz Biotechnology, Cat#: sc-390838
	Glypican-6	pAb, Rb IgG Biorbyt, Cat#: orb539585
	Perlecan	pAb, Rb IgG Gift from Prof. Dziadek, University of NSW, Australia.
	Collagen XVIII / endostatin	Ms IgG2b (1837-46) Santa Cruz Biotechnology, Cat#: sc-32720
	Agrin	Ms IgMκ (D2) Santa Cruz Biotechnology, Cat#: sc-374117



Supplementary Figure S1. Distribution of glypican-5 core protein in the 10-day-old rat eye. Mid-sagittal 10-day-old rat eye sections stained with Periodic acid-Schiffs (PAS, A1-8) or immunolabelled for Glypican-5 core protein (B1-8). Dotted white lines demarcate outline of the lens capsule. For immunofluorescence, nuclei were counterstained with Hoechst dye (blue). Abbreviations: Lens; central anterior epithelium (epi) and capsule (ac), germinative zone (gz), transitional zone (tz), lens fibre cells (fib), posterior lens capsule (pc), blood vessel (bv). Cornea; epithelium (epi), Bowman's capsule (bc), stroma (str), endothelium (endo), Descemet's membrane (dm). Ciliary body; non-pigmented ciliary epithelium (nce), pigmented ciliary epithelium (pce). Scale bars = 25 μ m.