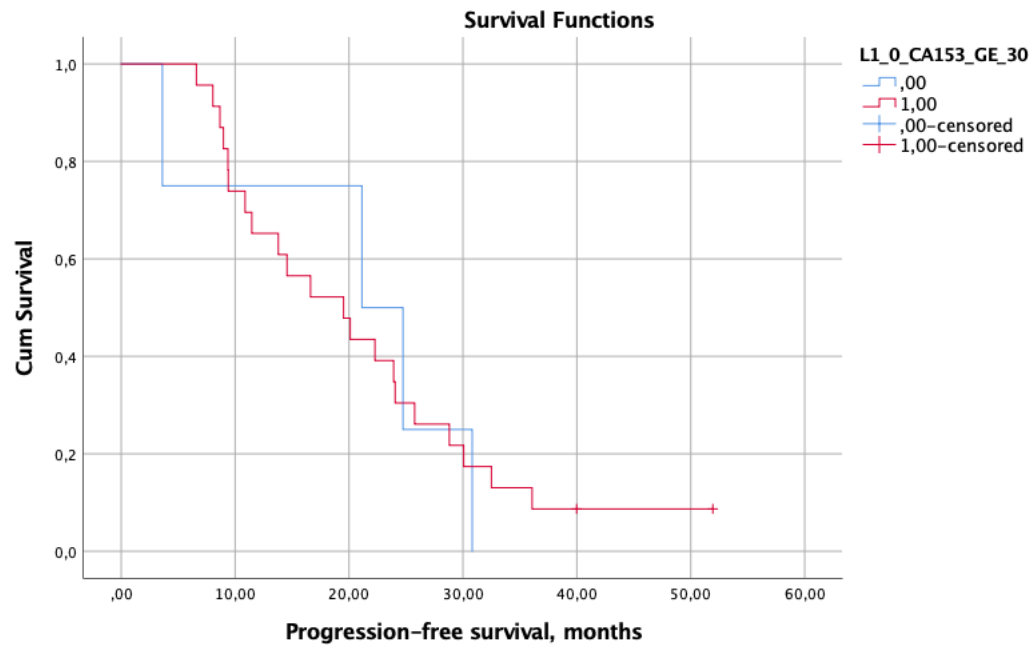
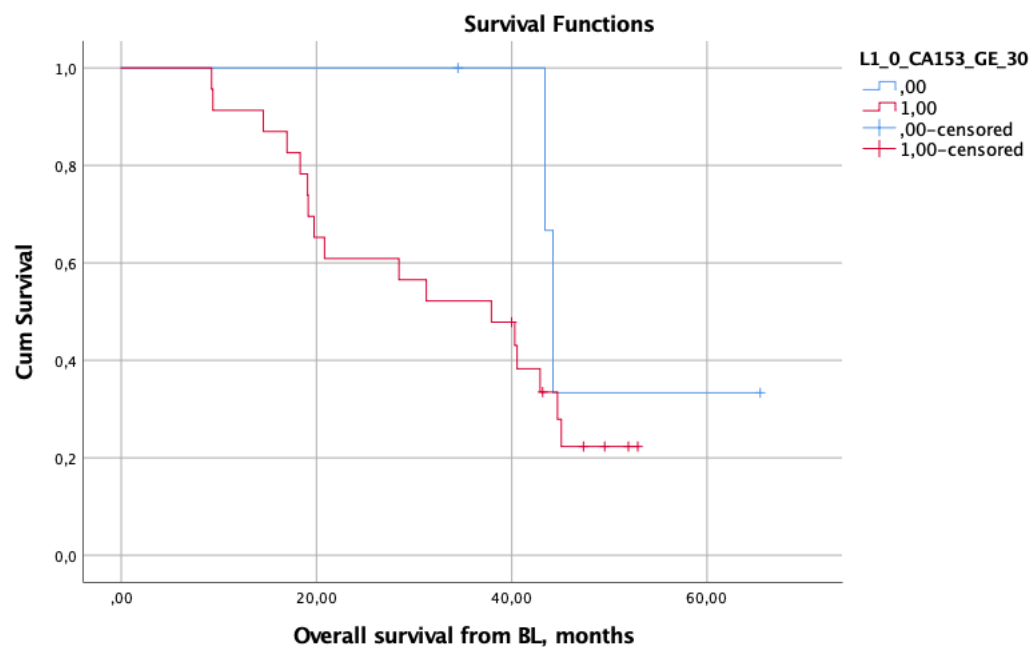


Supplementary material 7

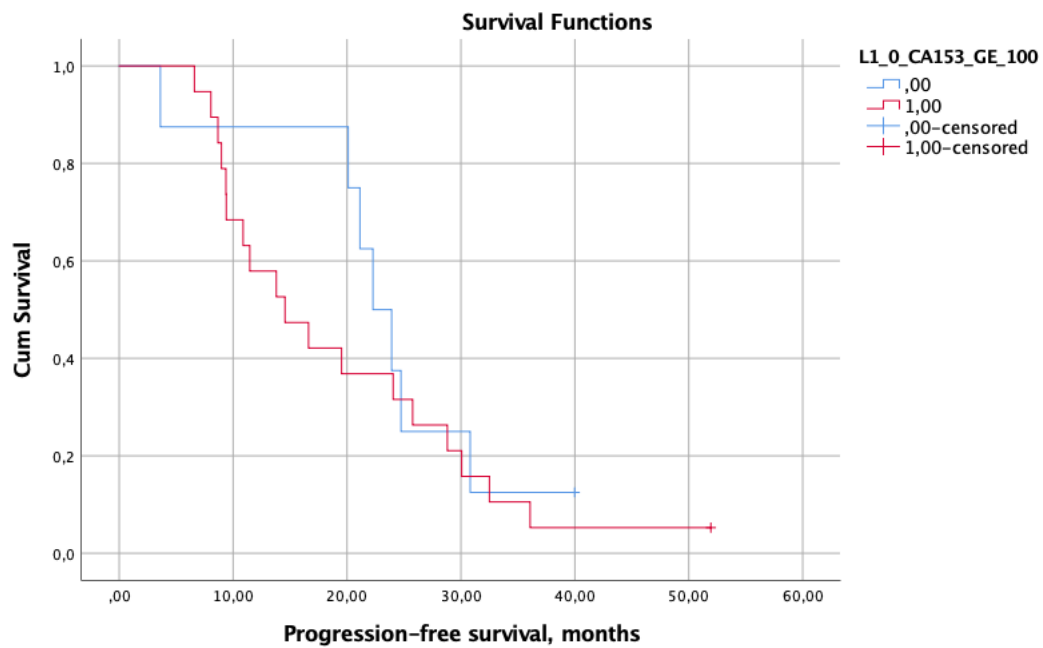
Progression-free survival (PFS) by CA 15-3 cut-off ≥ 30
in invasive lobular carcinoma (ILC) ($P=0.91$)



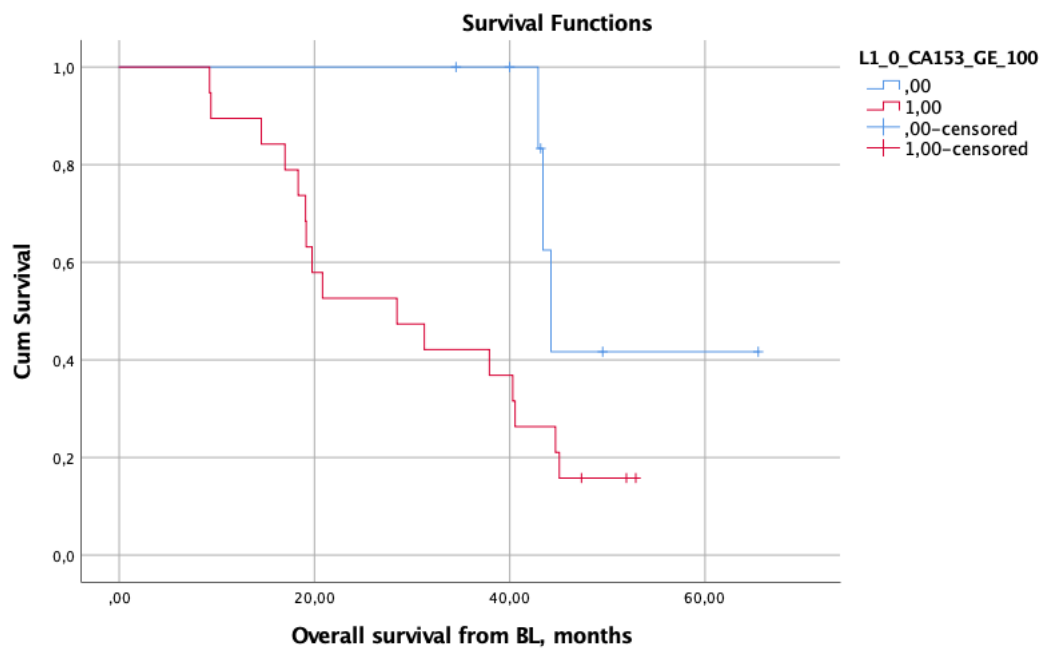
Overall survival (OS) by CA 15-3 cut-off ≥ 30 in ILC ($P=0.28$)



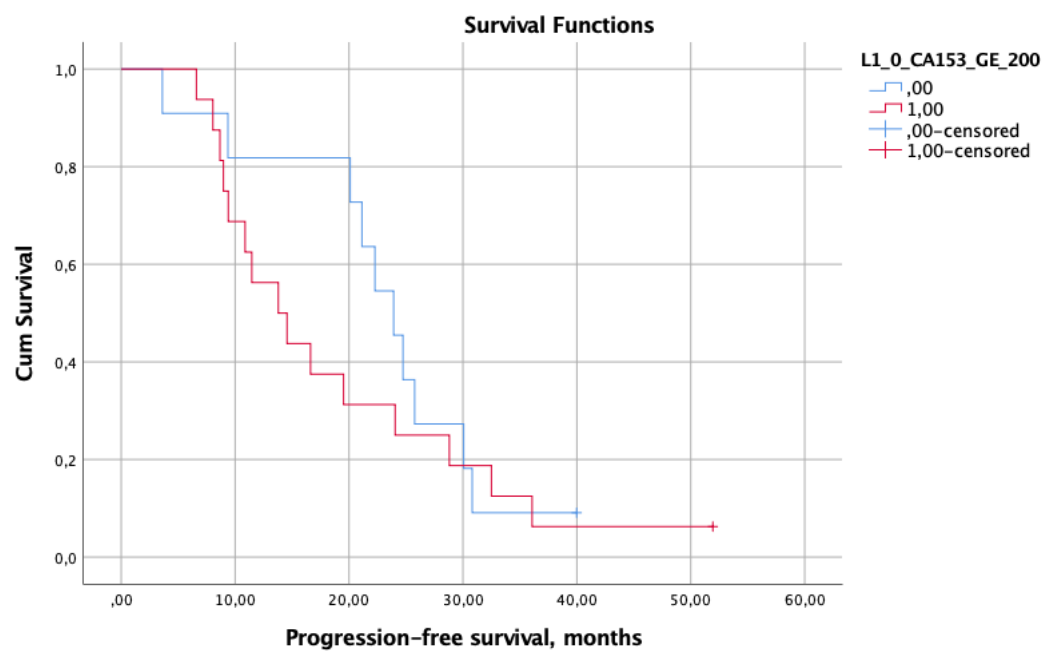
PFS by CA 15-3 cut-off ≥ 100 in ILC ($P=0.46$)



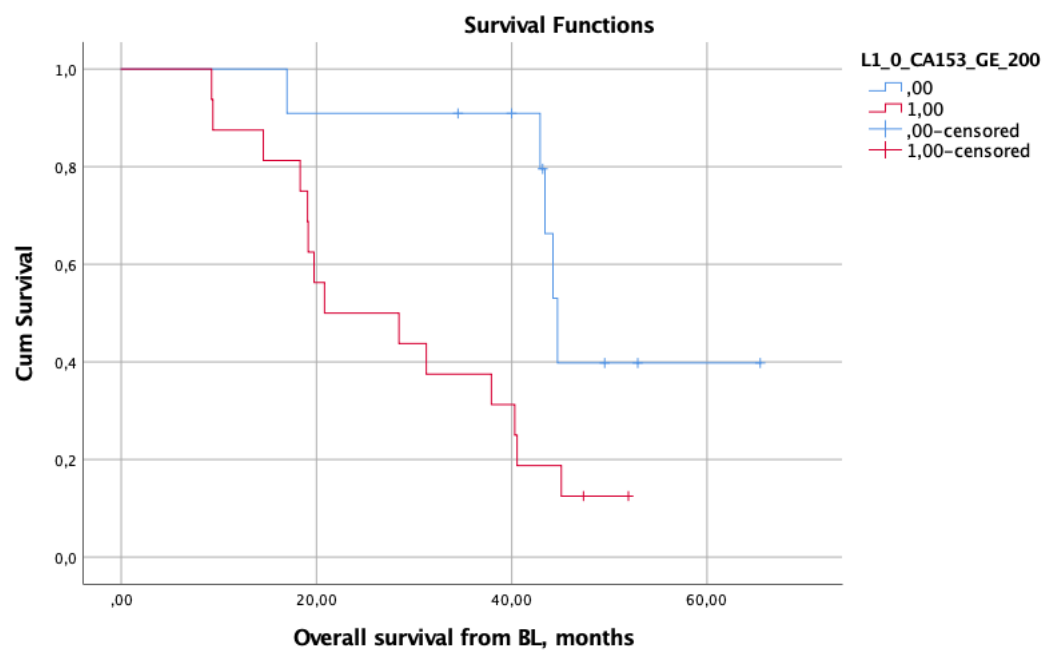
OS by CA 15-3 cut-off ≥ 100 in ILC ($P=0.03$)



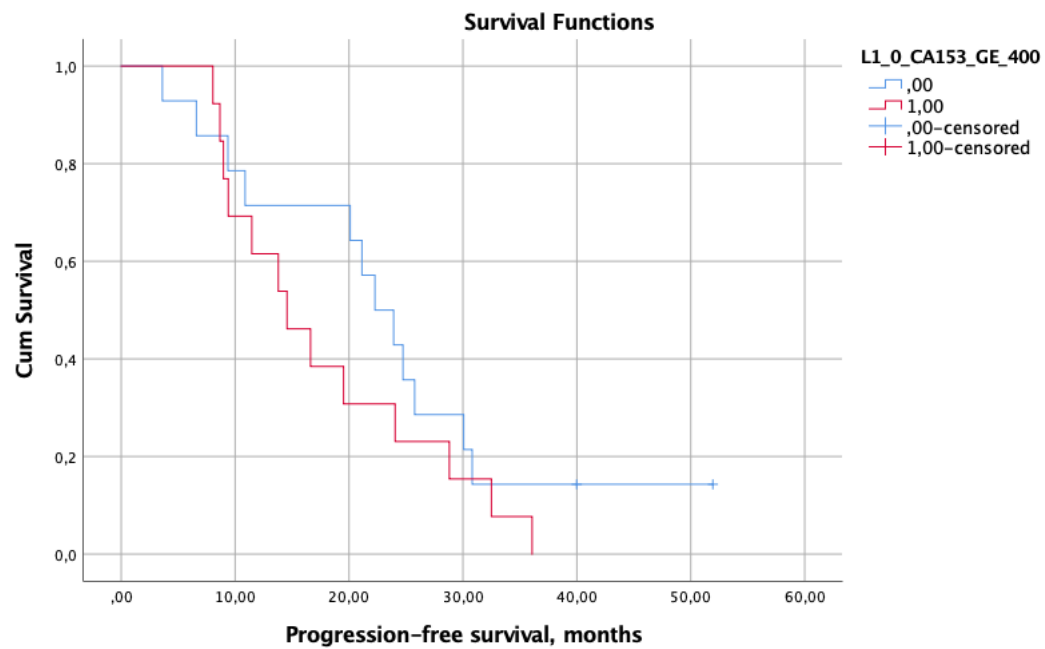
PFS by CA 15-3 cut-off ≥ 200 in ILC ($P=0.44$)



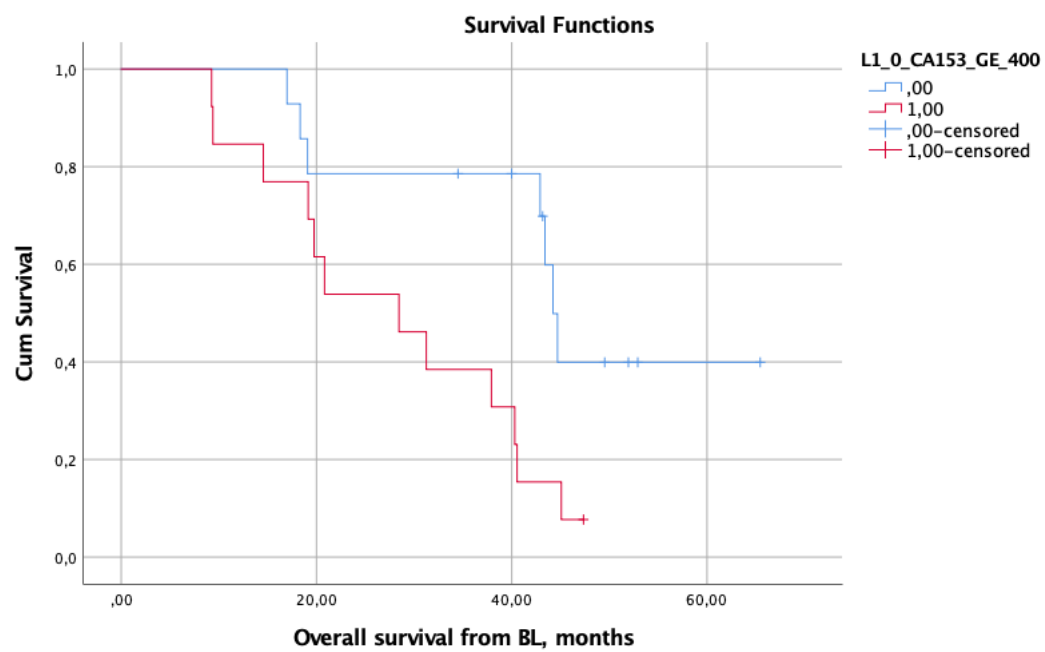
OS by CA 15-3 cut-off ≥ 200 in ILC ($P=0.01$)



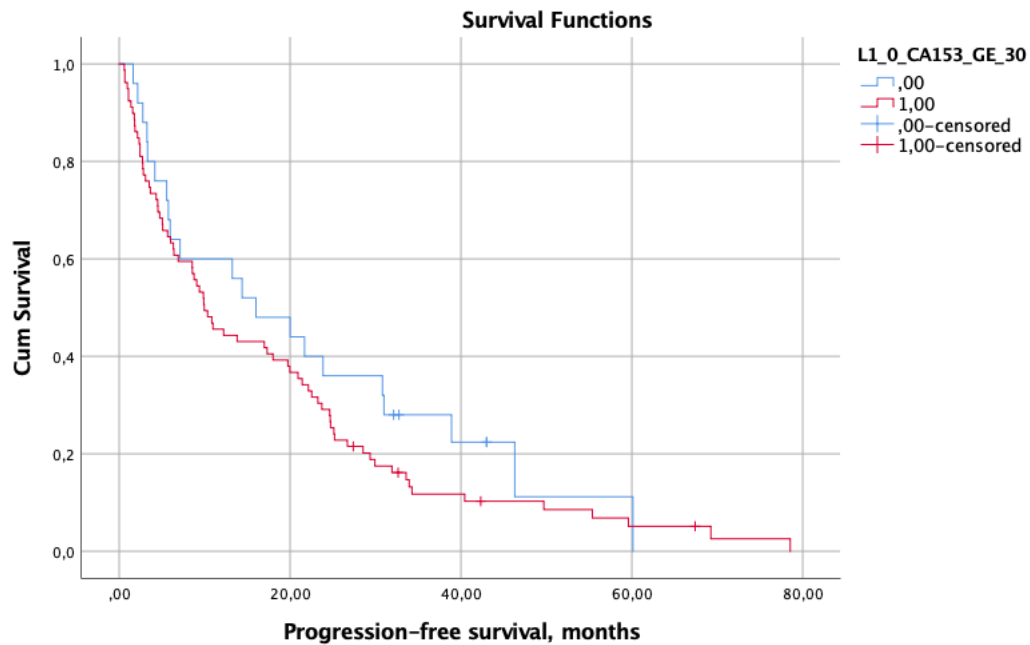
PFS by CA 15-3 cut-off ≥ 400 in ILC ($P=0.27$)



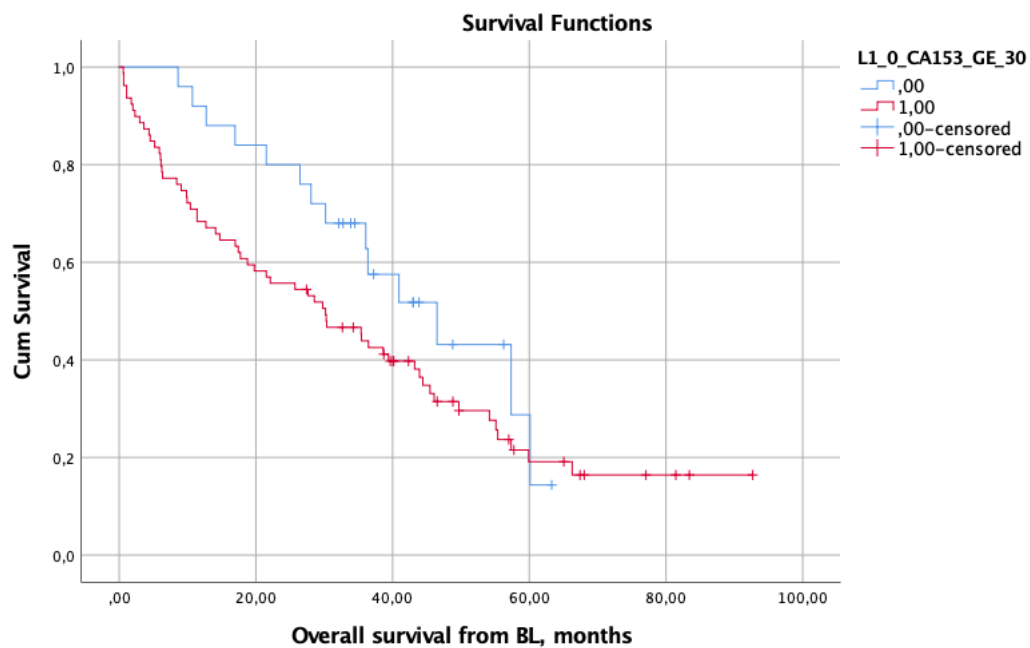
OS by CA 15-3 cut-off ≥ 400 in ILC ($P=0.01$)



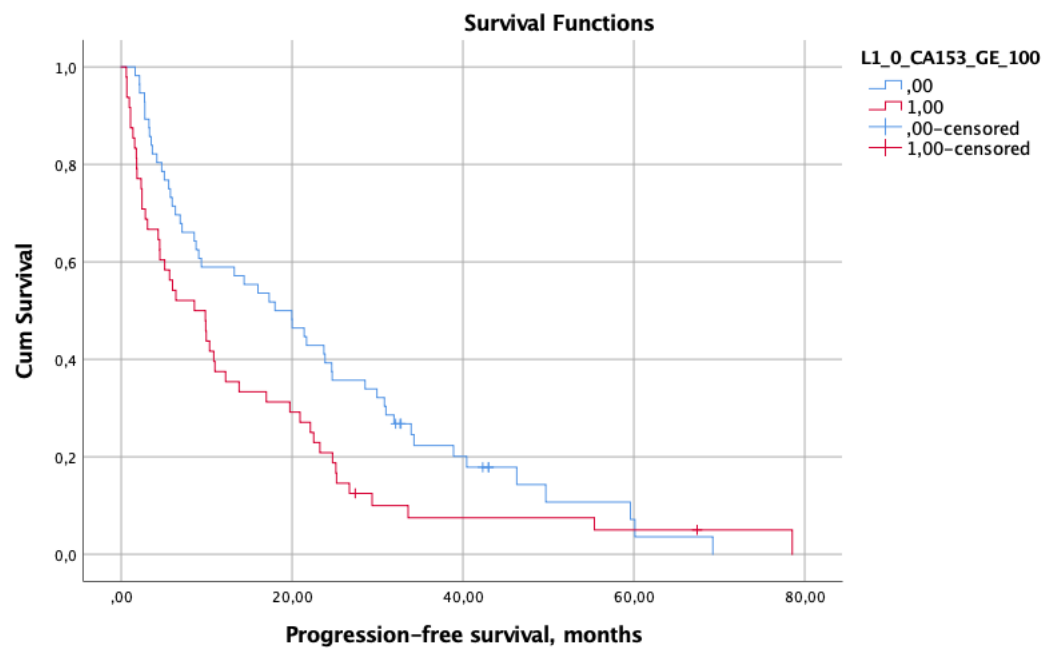
PFS by CA15-3 cut-off ≥ 30 in invasive ductal carcinoma
of no special type (NST) ($P=0.26$)



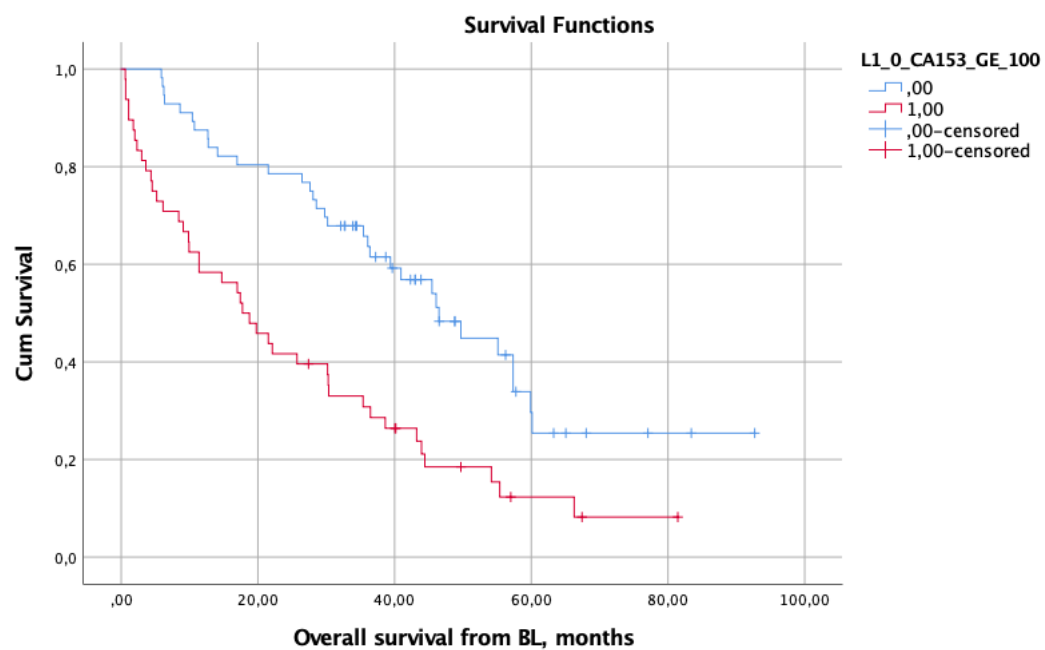
OS by CA 15-3 cut-off ≥ 30 in NST ($P=0.14$)



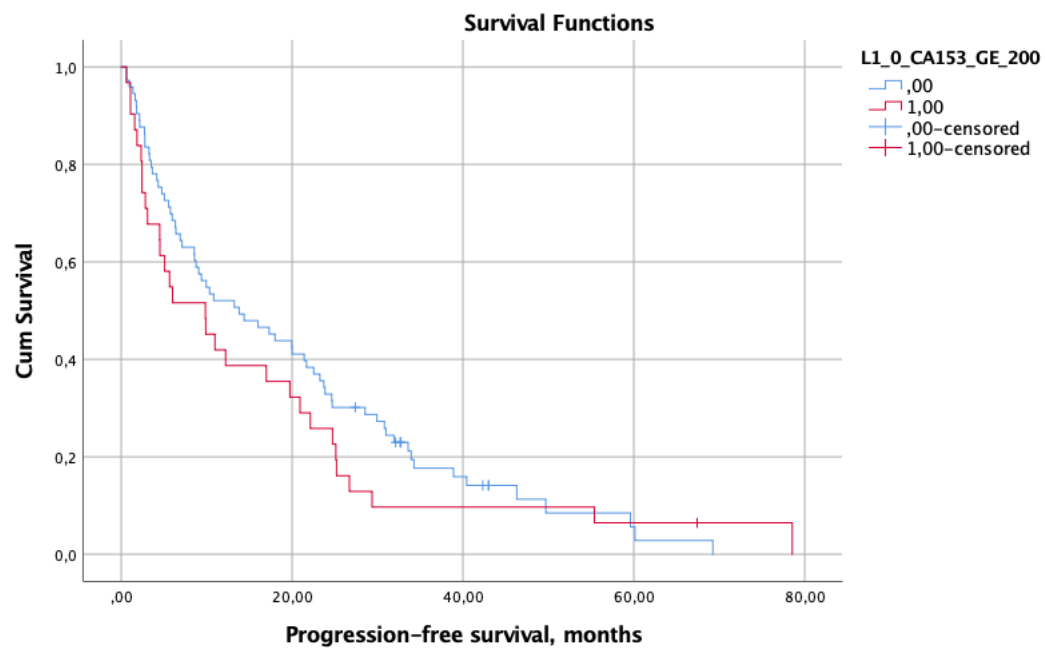
PFS by CA 15-3 cut-off ≥ 100 in NST ($P=0.03$)



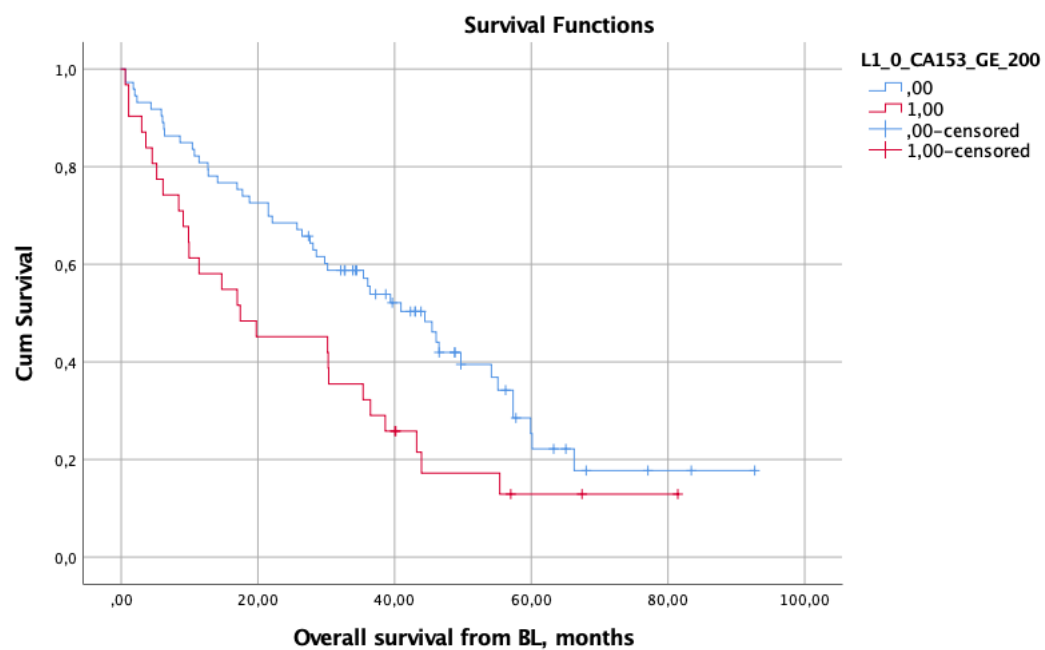
OS by CA 15-3 cut-off ≥ 100 in NST ($P<0.001$)



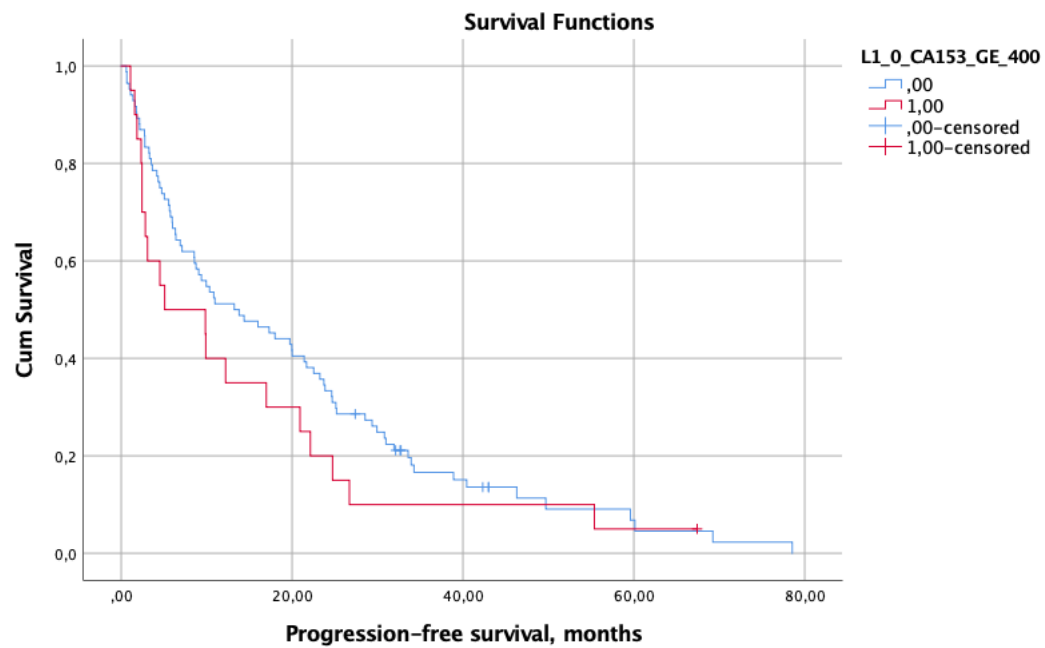
PFS by CA 15-3 cut-off ≥ 200 in NST ($P=0.35$)



OS by CA 15-3 cut-off ≥ 200 in NST ($P=0.01$)



PFS by CA 15-3 cut-off ≥ 400 in NST ($P=0.22$)



OS by CA 15-3 cut-off ≥ 400 in NST ($P=0.01$)

