

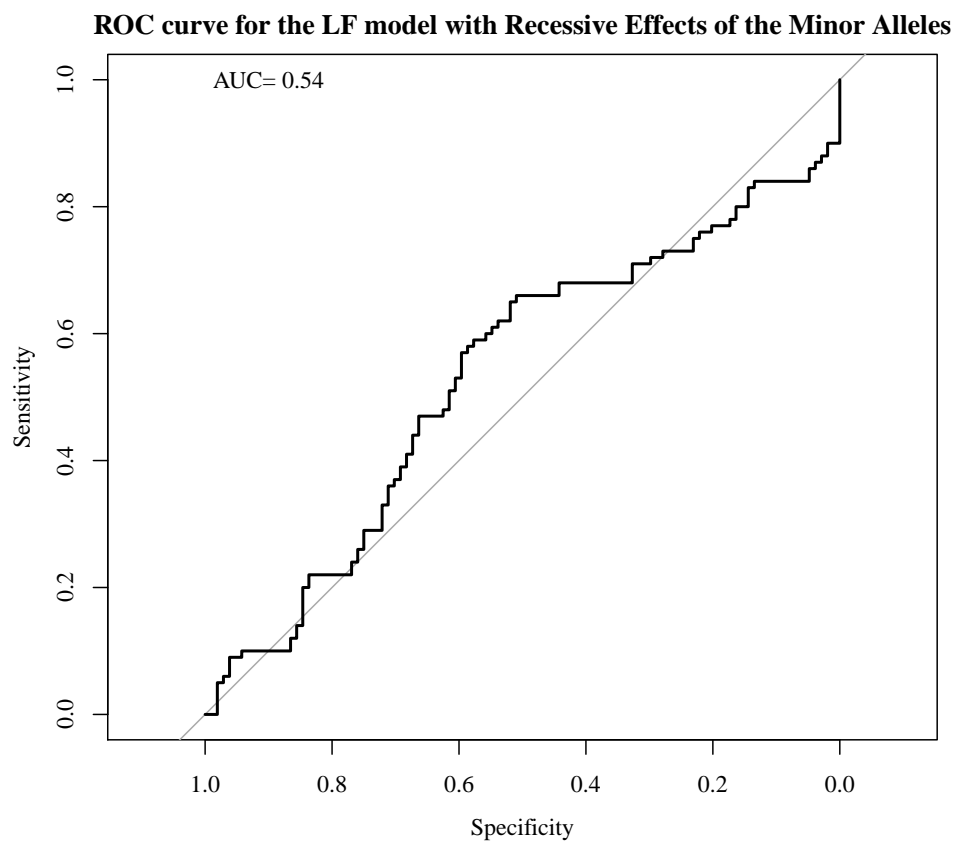
Supplemental Material: An analytic approach using  
candidate gene selection and Logic Forest to identify  
gene by environment interactions ( $G \times E$ ) for systemic  
lupus erythematosus in African Americans.

Bethany J Wolf, Paula S Ramos, J Madison Hyer, Viswanathan Ramakrishnan,  
Gary S Gilkeson, Gary Hardiman, Paul J Nietert, and Diane L Kamen

October 11, 2018

Supplemental Table 1 – Genotype frequencies for each of the SNPs discussed in the Results, Discussion, and Conclusions.

Gene	SNP	Genotype	Frequency (%)
ITGAX	rs4632147	T/T	10.6
		T/C	42.6
		C/C	46.8
	rs58708589	C/C	15.2
		C/T	43.7
		T/T	41.1
IRF5	rs11761199	G/G	3.04
		G/A	21.7
		A/A	75.3
	rs11770589	A/A	22.0
		A/G	50.6
		G/G	27.4
ITGAM	rs4632147	T/T	10.6
		T/C	42.6
		C/C	46.8
	rs58708589	C/C	15.2
		C/T	43.7
		T/T	41.1



Supplemental Figure 1 – Receiver operating characteristic (ROC) curve for a Logic Forest model of SLE status including the recessive effect of the minor allele for all SNPS, gender, passive smoke exposure as a child and as an adult, and smoking status.