

# Variations of Black Carbon Concentrations in Two Sites in Mexico: A High-Altitude National Park and a Semi-Urban Site

Martha Leyte-Lugo <sup>1</sup>, Bruno Sandoval <sup>2</sup>, Dara Salcedo <sup>3</sup>, Oscar Peralta <sup>4</sup>, Telma Castro <sup>4</sup> and Harry Alvarez-Ospina <sup>2,\*</sup>

<sup>1</sup> Catedrático CONACYT Comisionado a Departamento de Sistemas Biológicos, División de Ciencias Biológicas y de la Salud, Universidad Autónoma Metropolitana-Xochimilco (UAM-X), Mexico City 04960, Mexico; mleyte@correo.xoc.uam.mx

<sup>2</sup> Facultad de Ciencias, Universidad Nacional Autónoma de México, Mexico City 04510, Mexico; sandoval.bruno23@gmail.com

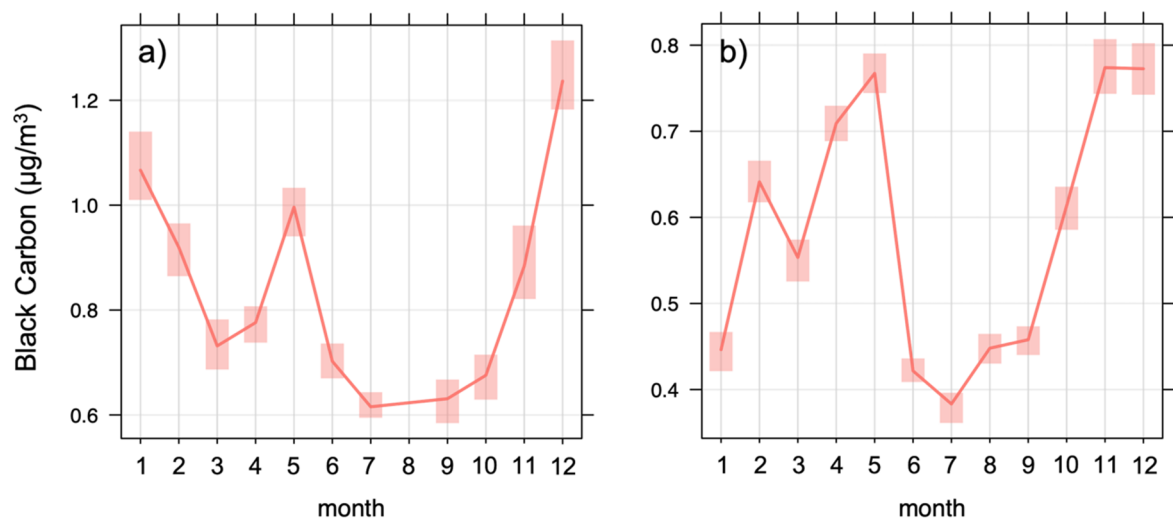
<sup>3</sup> Unidad Multidisciplinaria de Docencia e Investigación-Juriquilla Facultad de Ciencias, Universidad Nacional Autónoma de México, Queretaro 76230, Mexico; dara.salcedo@ciencias.unam.mx

<sup>4</sup> Instituto de Ciencias de la Atmósfera y Cambio Climático, Universidad Nacional Autónoma de México, Mexico City 04510, Mexico; oscar@atmosfera.unam.mx (O.P.); telma@atmosfera.unam.mx (T.C.)

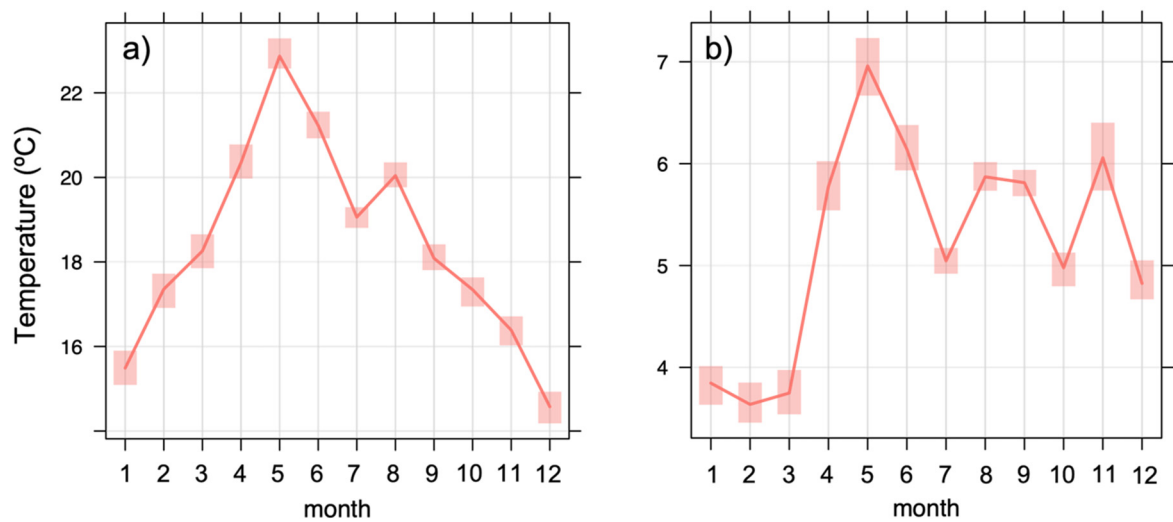
\* Correspondence: harryalvarez@ciencias.unam.mx

## Table of contents

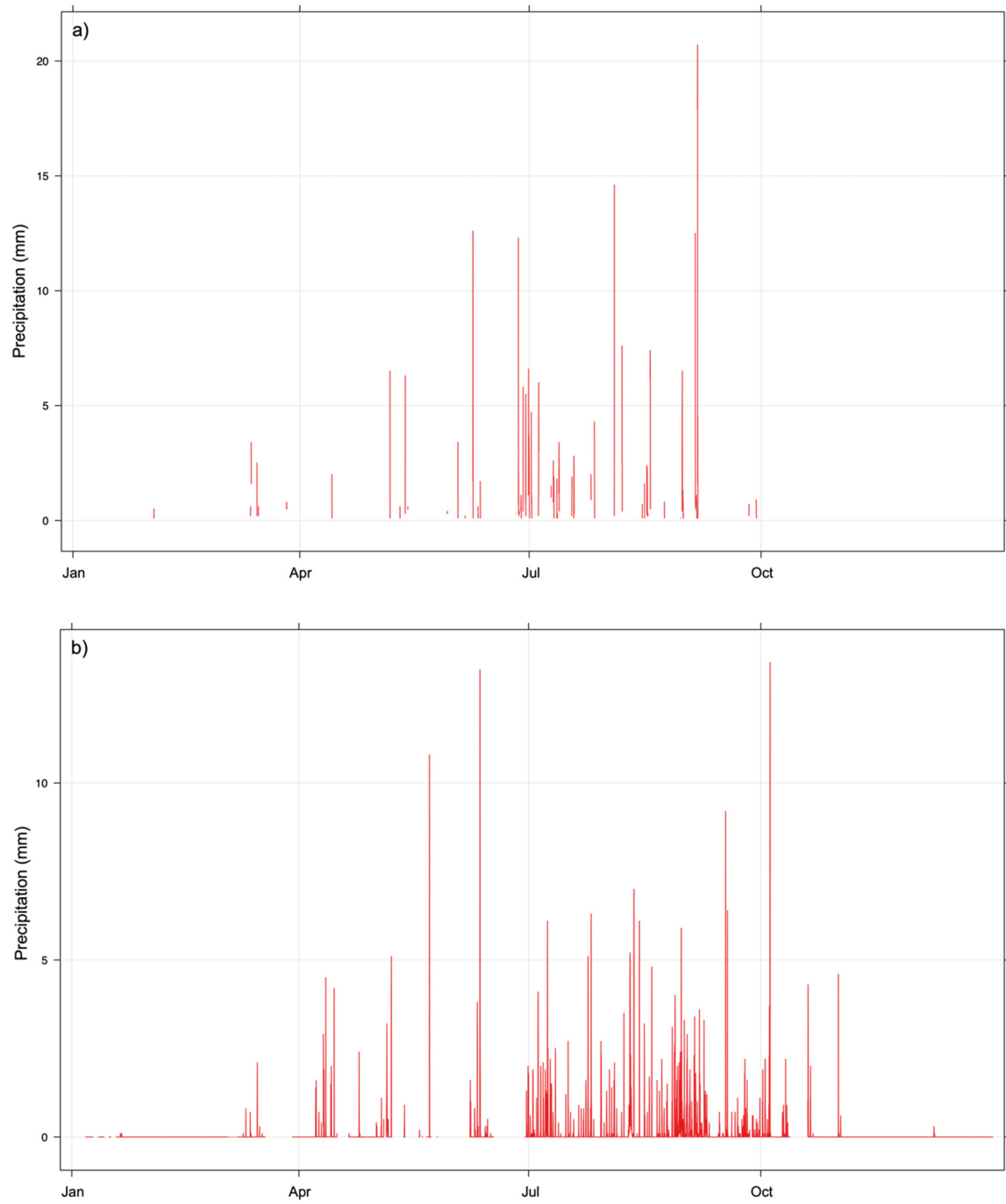
	Page
<b>Figure S1.</b> Average monthly profile of BC in (a) JQRO and (b) ALTZ for sampling period. The shading highlights the standard deviation.	2
<b>Figure S2.</b> Average monthly profile of temperature in (a) JQRO and (b) ALTZ for sampling period. The shading highlights the standard deviation.	2
<b>Figure S3.</b> Time series of hourly precipitation at (a) JQRO and (b) ALTZ during 2017.	3
<b>Figure S4.</b> Average daily profiles of the boundary layer in (a) JQRO and (b) ALTZ for the sampling period. The shading highlights the standard deviation.	4
<b>Figure S5.</b> Average daily profiles of BC in JQRO of the four-seasons: (a) S1; (b) S2; (c) S3; and (d) S4. The shading highlights the standard deviation.	5
<b>Figure S6.</b> Average daily profiles of BC in ALTZ of the four-seasons: (a) S1; (b) S2; (c) S3; and (d) S4. The shading highlights the standard deviation.	6



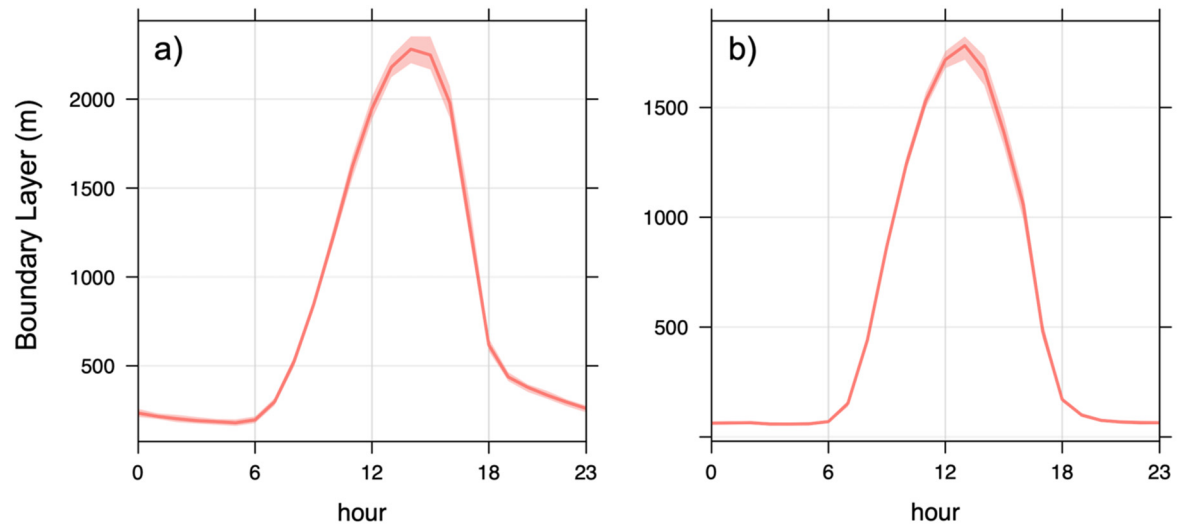
**Figure S1.** Average monthly profile of BC in (a) JQRO and (b) ALTZ for sampling period. The shading highlights the standard deviation.



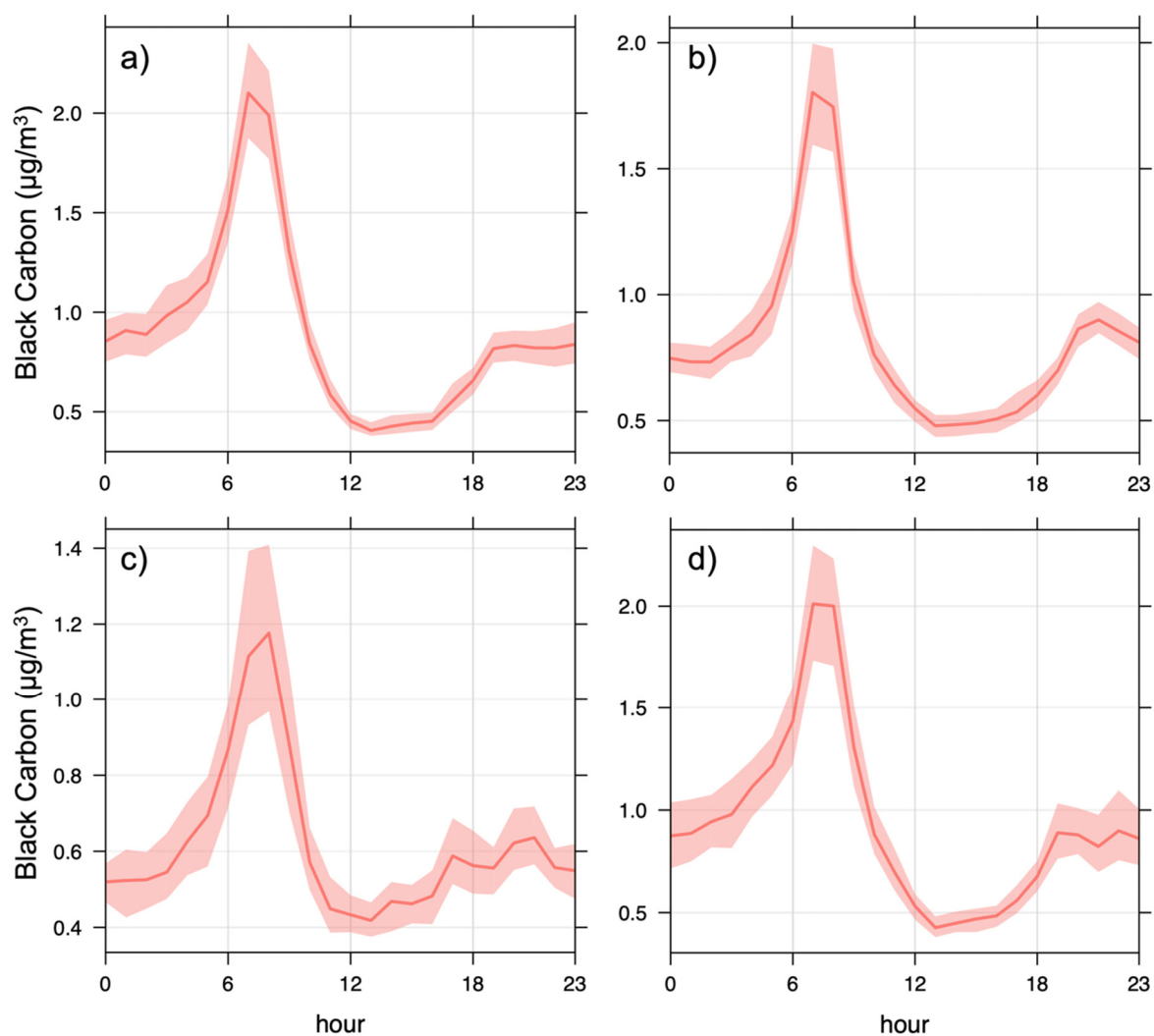
**Figure S2.** Average monthly profile of temperature in (a) JQRO and (b) ALTZ for sampling period. The shading highlights the standard deviation.



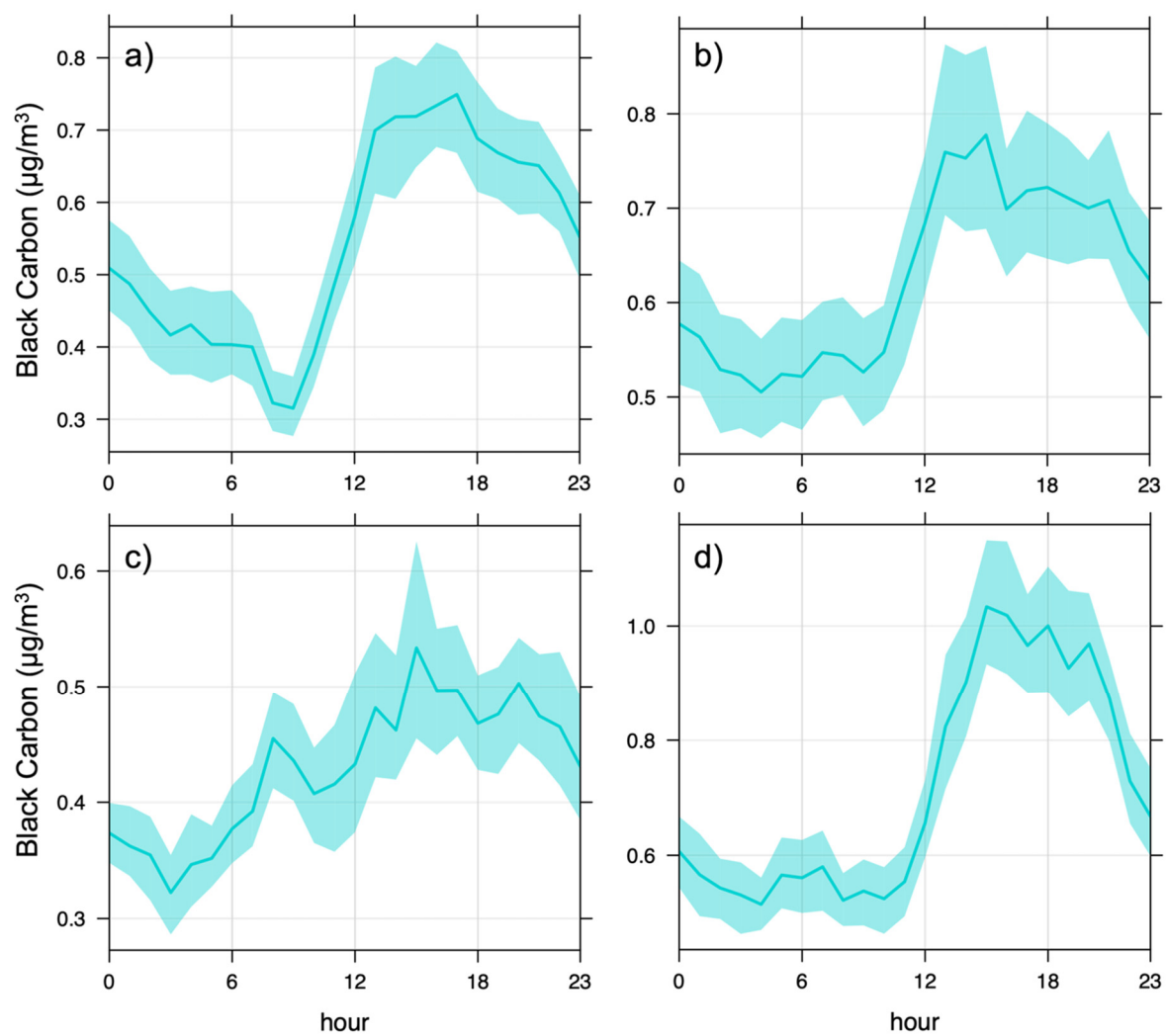
**Figure S3.** Time series of hourly precipitation at (a) JQRO and (b) ALTZ during 2017.



**Figure S4.** Average daily profiles of the boundary layer in (a) JQRO and (b) ALTZ for the sampling period. The shading highlights the standard deviation.



**Figure S5.** Average daily profiles of BC in JQRO of the four-seasons: (a) S1; (b) S2; (c) S3; and (d) S4. The shading highlights the standard deviation.



**Figure S6.** Average daily profiles of BC in ALTZ of the four-seasons: (a) S1; (b) S2; (c) S3; and (d) S4. The shading highlights the standard deviation.