

Supplementary Materials:

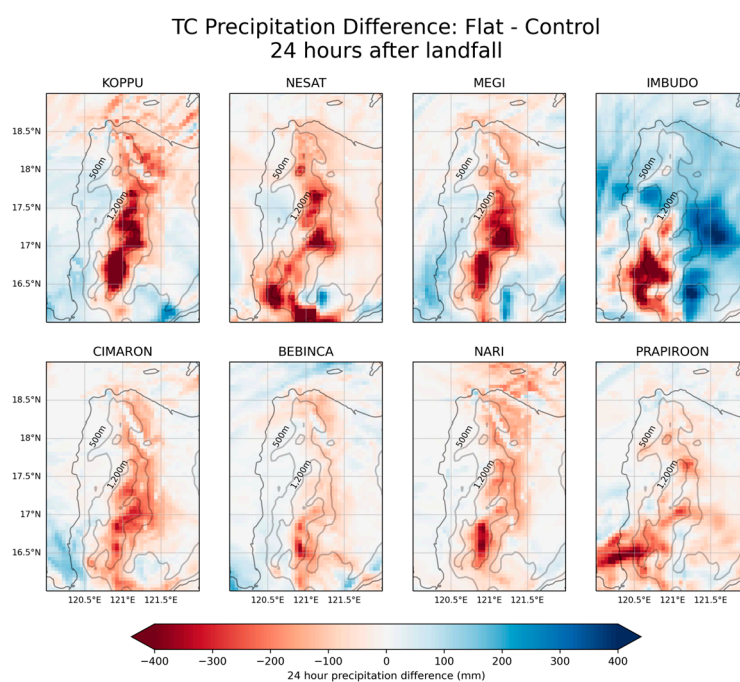


Figure S1. Difference in 24-hour accumulated precipitation after landfall (shading) between Flat and Control but zoomed in to highlight the difference in precipitation over CMR's terrain. Contour lines for 500m and 1,200m heights are labelled accordingly.

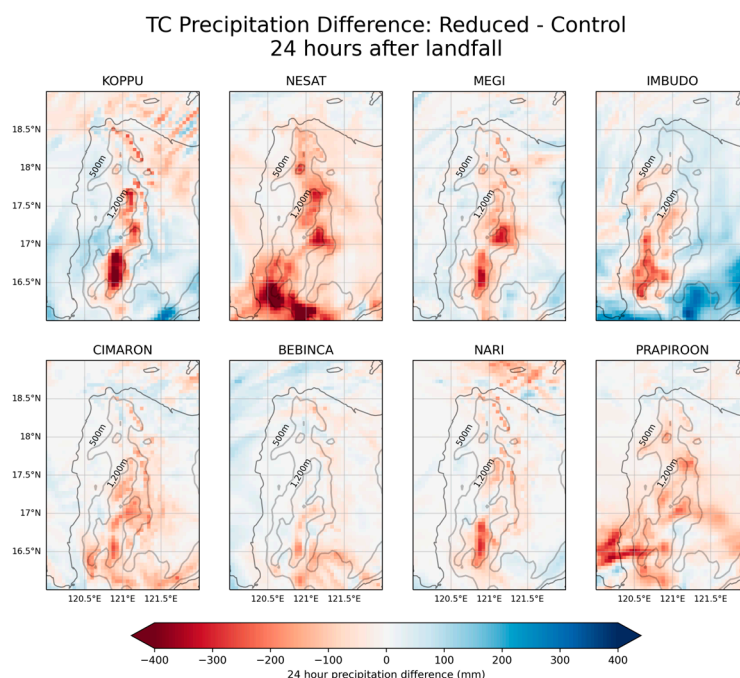


Figure S2. Similar to Figure S1 but for the difference between Reduced and Control.

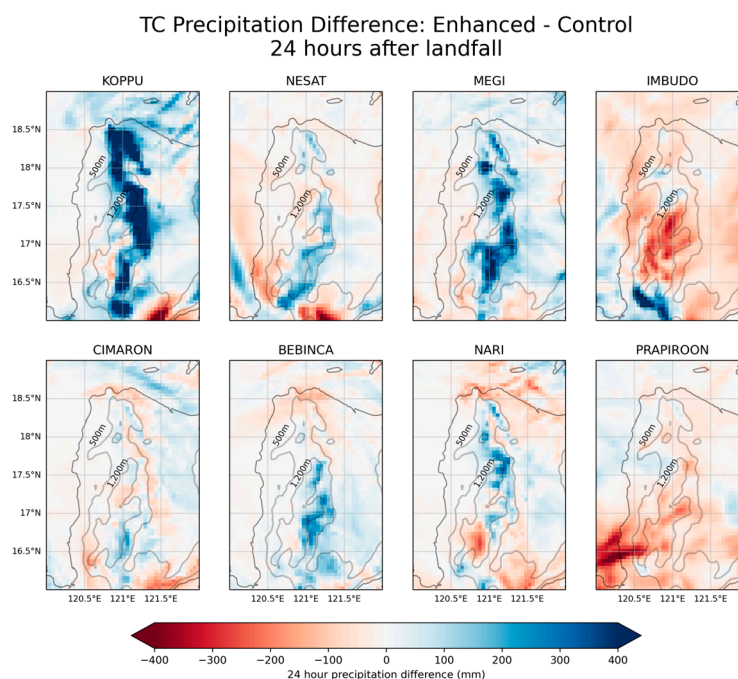


Figure S3. Similar to Figure S1 but for the difference between Enhanced and Control.

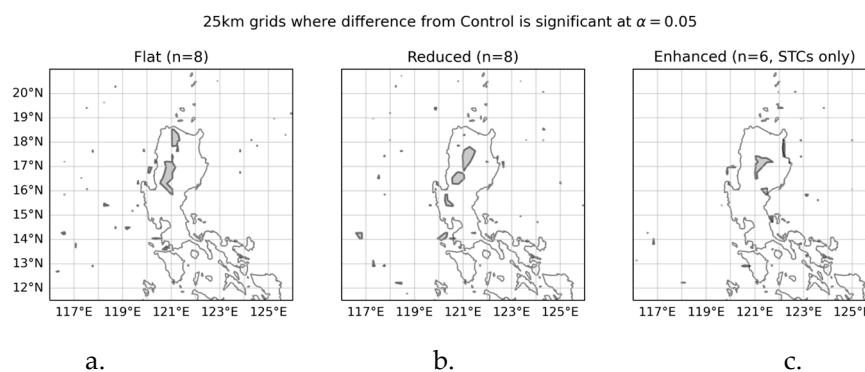


Figure S4. Regions where difference from Control is significant at $\alpha = 0.05$ for (a) Flat, (b) Reduced, and (c) Enhanced. Note that only STCs are included in evaluating the significance of Enhanced.