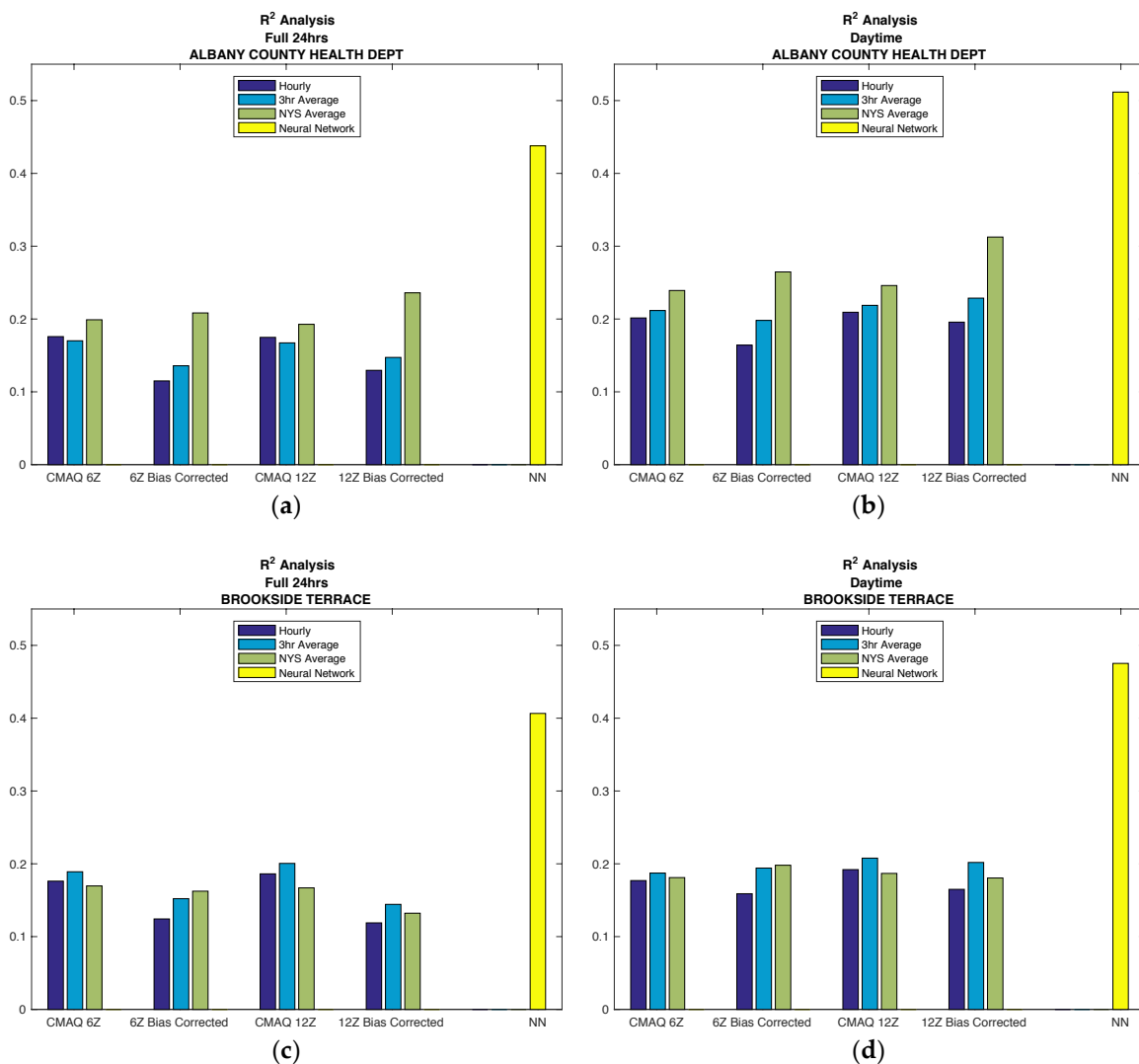
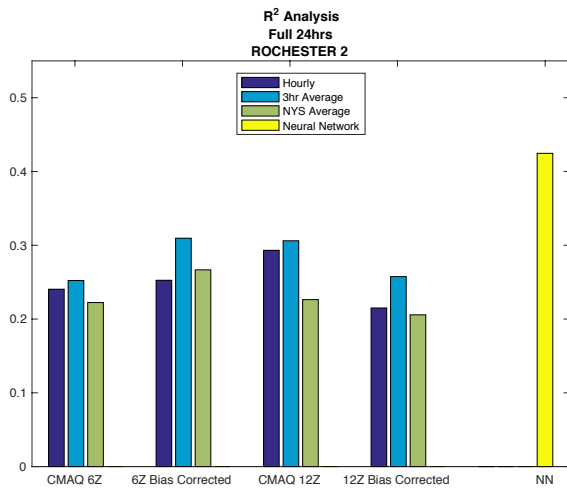
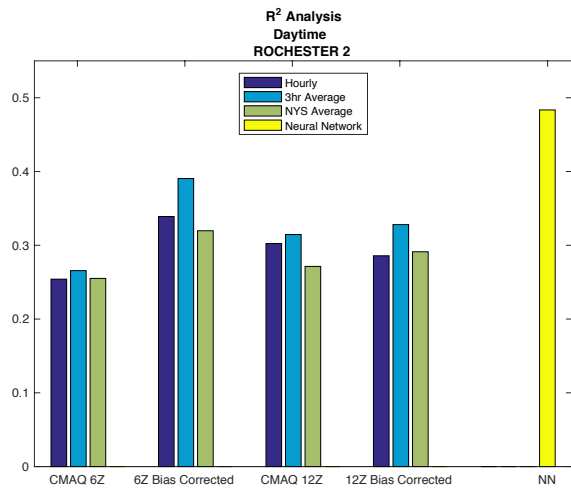


Figure S1, Regression Analysis. The regression analysis is computed for the comparison between AirNow observations and the various prediction models. The R^2 value comparing each model to the observations is plotted in the figures below to compare CMAQ to the NN. The CMAQ model includes the different release times as well as bias compensated vs. uncompensated runs. In addition, different time and spatial averaging of CMAQ is considered each location. Each row contains a different location. The left column is for a 24-hour analysis, while the right column is for daytime hours, 8AM-8PM EDT.

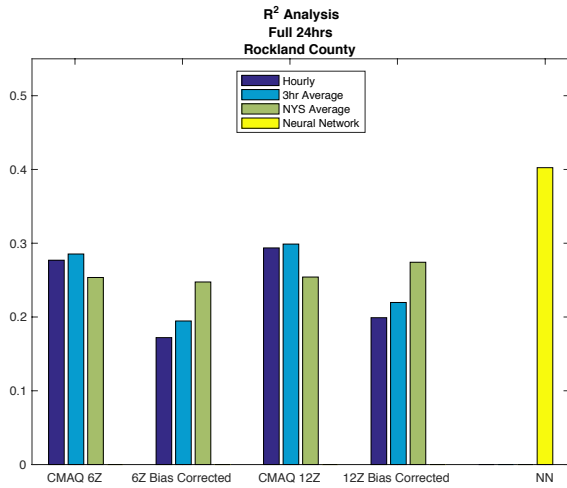




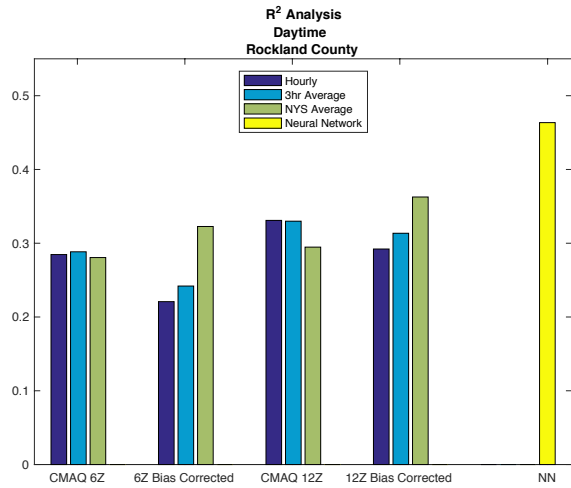
(e)



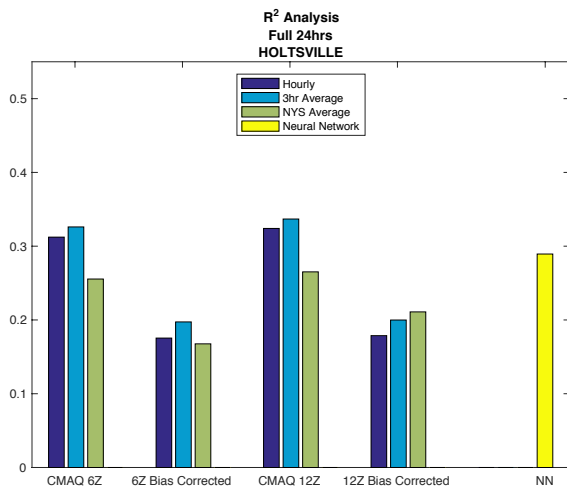
(f)



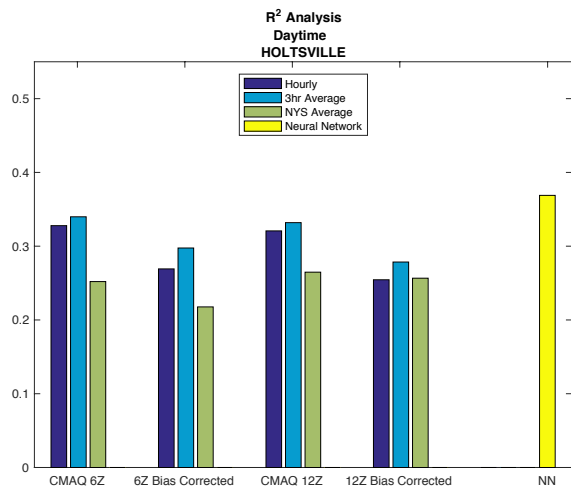
(g)



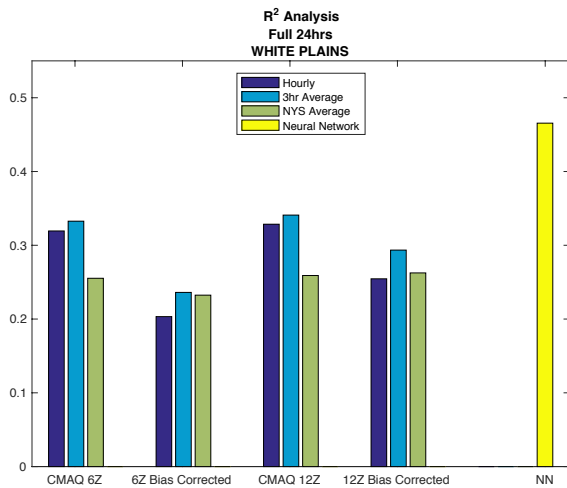
(h)



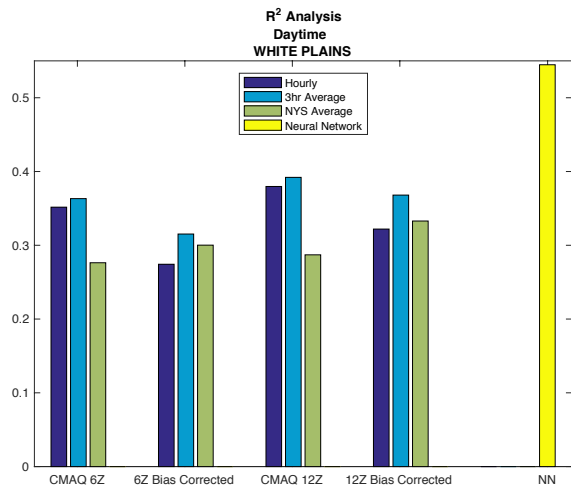
(i)



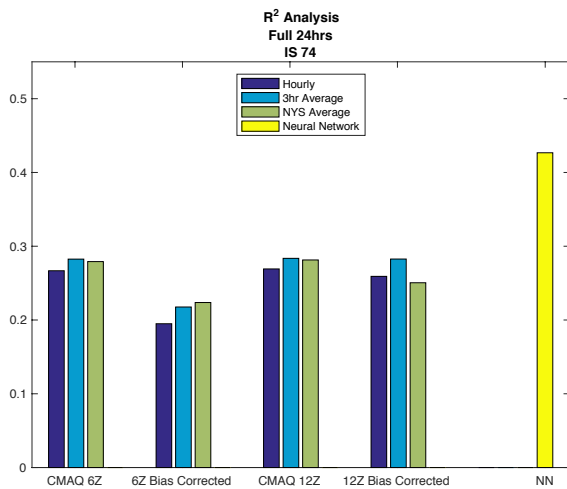
(j)



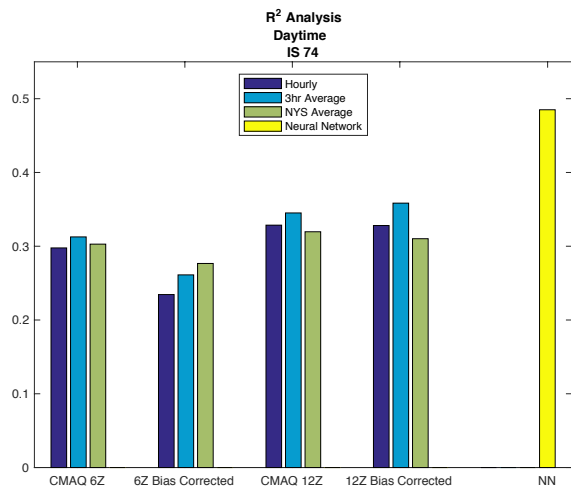
(k)



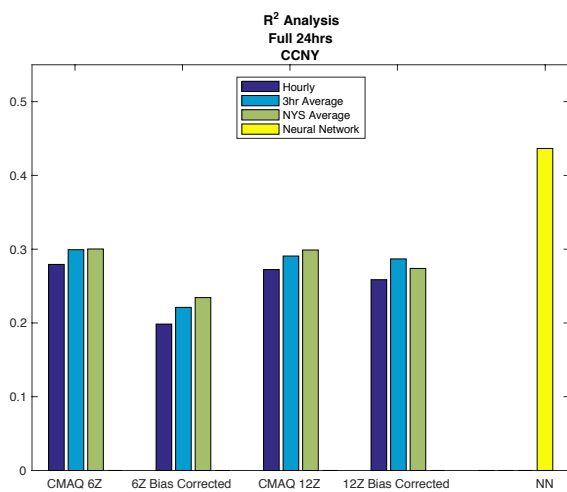
(l)



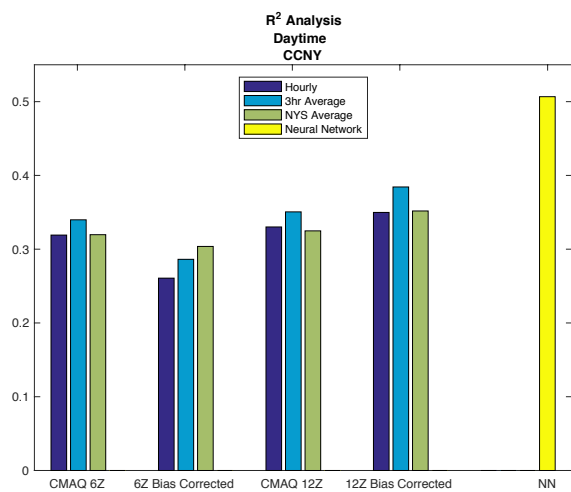
(m)



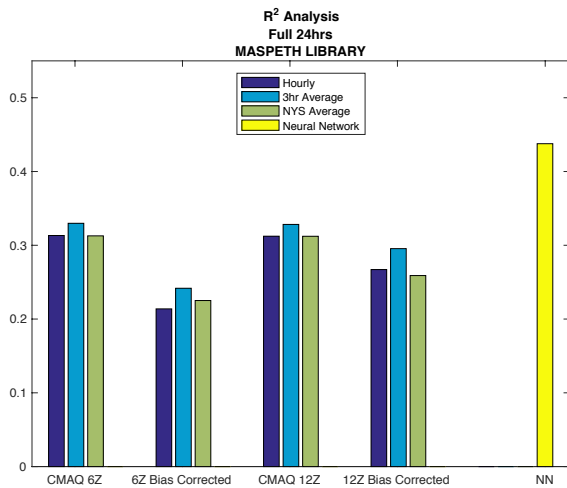
(n)



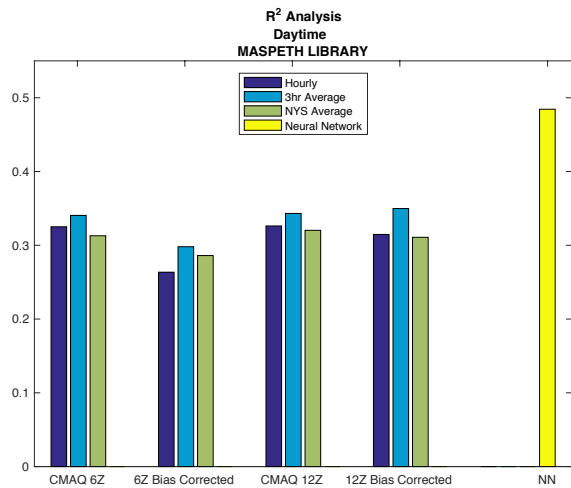
(o)



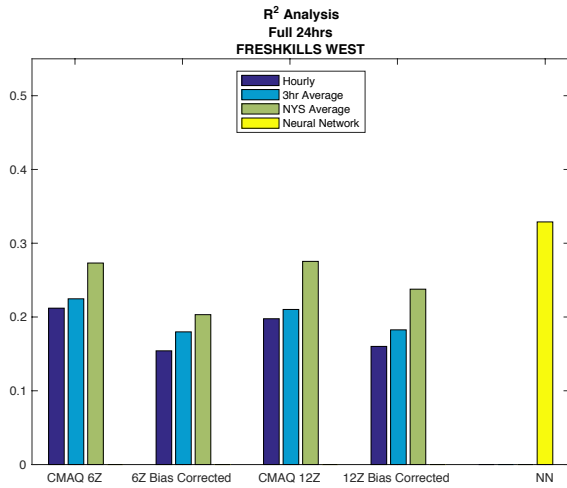
(p)



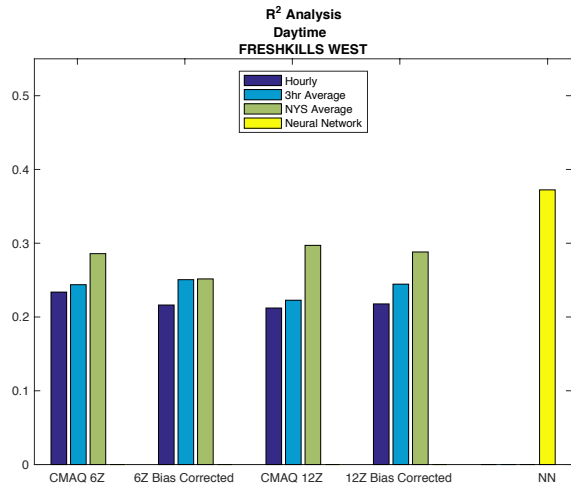
(q)



(r)



(s)



(t)