

Spatiotemporal Distribution of Satellite-Retrieved Ground-Level PM_{2.5} and Near Real-Time Daily Retrieval Algorithm Development in Sichuan Basin, China

Chao Gao, Xuelei Zhang, Wenyong Wang, Aijun Xiu, Daniel Q. Tong and Weiwei Chen

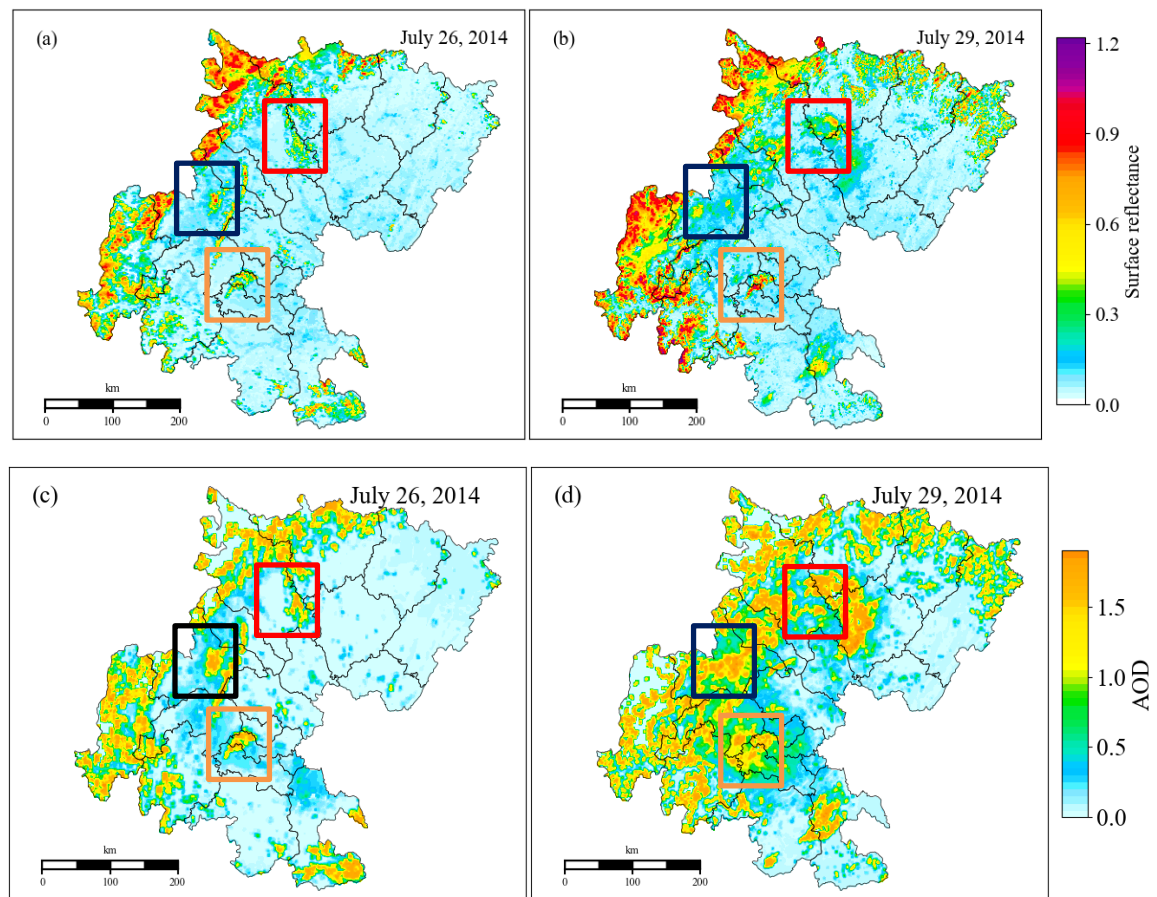


Figure S1. A comparison between two days (26 July 2014 and 29 July 2014) with similar surface reflectance (around 0.4), but with different MODIS retrieved AODs.