

Article

Dynamic Assessment of the Flood Risk at Basin Scale under Simulation of Land-Use Scenarios and Spatialization Technology of Factor

Jun Liu ¹, Jiyan Wang ¹, Junnan Xiong ^{1,2,*}, Weiming Cheng ², Xingjie Cui ¹, Wen He ¹, Yufeng He ¹, Yu Duan ¹, Gang Yang ¹ and Nan Wang ³

¹ School of Civil Engineering and Geomatics, Southwest Petroleum University, Chengdu 610500, China; 201922000655@stu.swpu.edu.cn (J.L.); wangjiyan@swpu.edu.cn (J.W.); 202022000943@stu.swpu.edu.cn (X.C.); 201922000663@stu.swpu.edu.cn (W.H.); 201922000656@stu.swpu.edu.cn (Y.H.); 201922000658@stu.swpu.edu.cn (Y.D.); 201922000664@stu.swpu.edu.cn (G.Y.)

² State Key Laboratory of Resources and Environmental Information System, Institute of Geographic Sciences and Natural Resources Research, CAS, Beijing 100101, China; chengwm@lreis.ac.cn

³ School of Geographical Sciences, Northeast Normal University, Changchun, 130024, China; wangn236@nenu.edu.cn

* Correspondence: xiongjn@swpu.edu.cn

Supplementary Figures

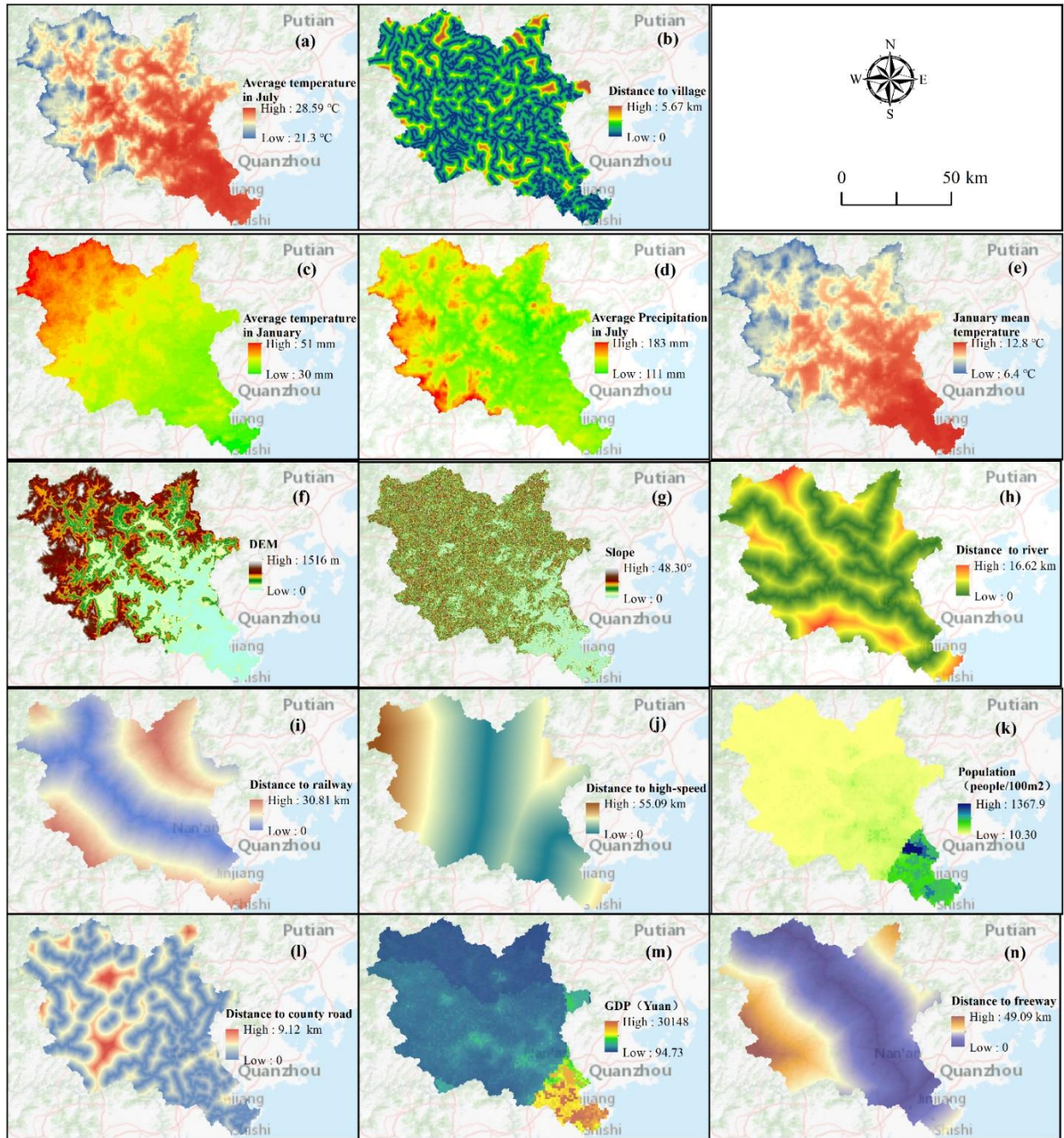


Figure S1. The driving factors of land-use changes. Subfigures a and b are the average temperature in July and distance to village respectively; Subfigures c–e are average temperature in January, average precipitation in July and January mean temperature respectively; Subfigures f–h are DEM, slope, and distance to river respectively; Subfigures i–k are distance to railway, distance to high-speed, and Population respectively; Subfigures l–n are distance to county road, GDP, and distance to freeway.

Supplementary Tables

Table S1. The overview of data used in the future land-use simulation.

Factor types	factors	Years	Resolution	Sources
Natural environment	DEM	2010	30m	Geospatial Data Cloud (www.gscloud.cn) (accessed on: 6 May 2021)
	Slope			
	Distance to river	2010	1:1,000,000	National Flash Flood Investigation and Evaluation Project (NFFIEP)
	Average temperature in January	1970-2020	30s	
	Average temperature in July			
	Average precipitation in January			
	Average precipitation in July			
Social economy	Population	2010	1km	Geospatial Data Cloud (www.gscloud.cn) (accessed: 30 May 2021)
	GDP			
Geographical location	Distance to county road	2015	1:1,000,000	National Flash Flood Investigation and Evaluation Project (NFFIEP)
	Distance to freeway			
	Distance to railway			
	Distance to high-speed rail			
	Distance to village			

Table S2. Parameters of disaster-inducing factors, disaster-breeding environments, and hazard-bearing bodies in the triangular fuzzy number-based AHP (TFN-AHP).

Matrix A	Disaster-inducing factors	Disaster-breeding environments	Hazard-bearing bodies
Disaster-inducing factors	1	1/4,1/2,1	1/3,1/2,1
Disaster-breeding environments	1,2,4	1	1/1.5,1/1.25,1
Hazard-bearing bodies	1,2,3	1,1.25,1.5	1

Table S3. Parameters of disaster-inducing factors in the triangular fuzzy number-based AHP (TFN-AHP).

Disaster-inducing factors	M3DP	BYD
M3DP	1	1,1.5,2
BYD	1/2,1/1.5,1	1

Table S4. Parameters of disaster-breeding environments in the triangular fuzzy number-based AHP (TFN-AHP).

Disaster-breeding environments	RC	DEM	SL	DR	TWI
RC	1	1.5,1/1.2,1	1.5,1/1.2,1	1	1,1.5,2
DEM	1, 1.2, 1.5	1	1	1	1,1.5,3
SL	1, 1.2, 1.5	1	1	1	1,1.5,3
DR	1	1	1	1	1,1.5,2
TWI	1/2,1/1.5,1	1/3,1/1.5,1	1/3,1/1.5,1	1/2,1/1.5,1	1

Table S5. Parameters of hazard-bearing bodies in the triangular fuzzy number-based AHP (TFN-AHP).

Hazard-bearing bodies	GDP	POP
-----------------------	-----	-----

GDP	1.00	1/1.5, 1/1.1, 1
POP	1, 1.1, 1.5	1.00

Table S6. The weights of each factor determined by triangular fuzzy number-based AHP (TFN-AHP).

M3DP	BYD	RC	DEM	SL	DR	TWI	GDR	POP
0.13	0.07	0.08	0.10	0.10	0.09	0.03	0.17	0.25

Table S7. The weights of each factor determined by Criteria Importance Through Intercriteria Correlation (CRITIC).

Years	Scenar- ios	M3DP	BYD	DEM	SL	DR	TWI	RC	GDR	POP
2020	\	0.14	0.12	0.10	0.10	0.15	0.07	0.18	0.10	0.04
	NG	0.14	0.12	0.10	0.10	0.15	0.07	0.18	0.10	0.04
2030	EP	0.14	0.12	0.10	0.10	0.15	0.07	0.18	0.10	0.04
	CP	0.15	0.12	0.11	0.10	0.15	0.07	0.18	0.09	0.03
	NG	0.14	0.12	0.10	0.10	0.15	0.07	0.19	0.10	0.03
2050	EP	0.15	0.12	0.11	0.10	0.15	0.07	0.18	0.09	0.03
	CP	0.15	0.12	0.11	0.10	0.15	0.07	0.18	0.09	0.03

NG, EP and CP scenarios represent natural growth scenario, and ecological protection scenario, and cropland protection scenario, respectively.