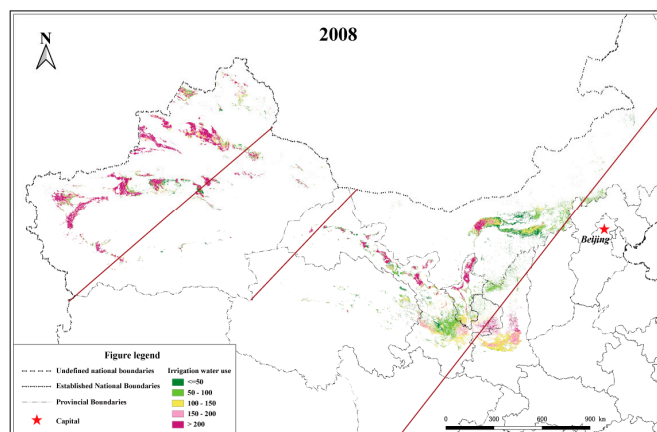
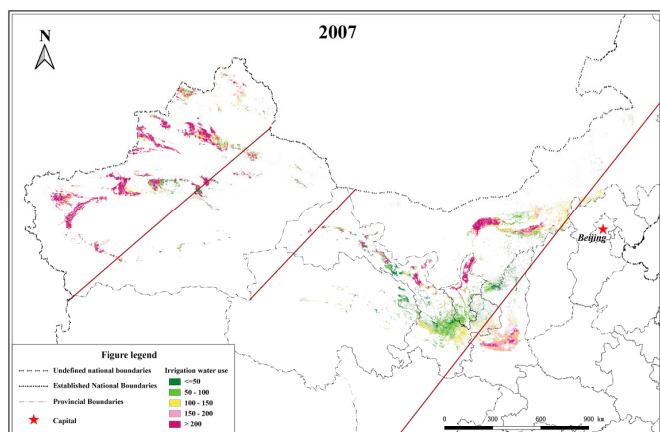
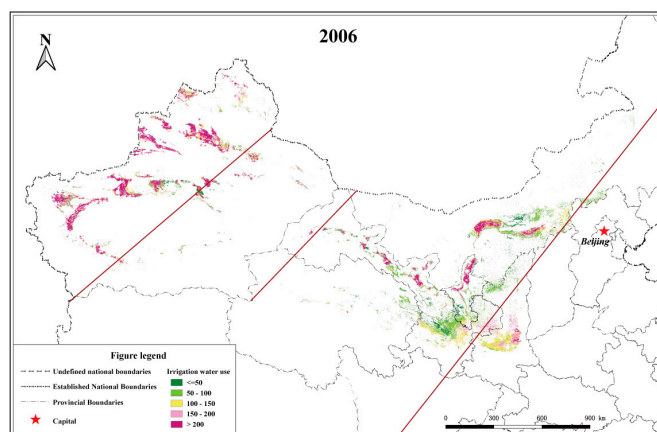
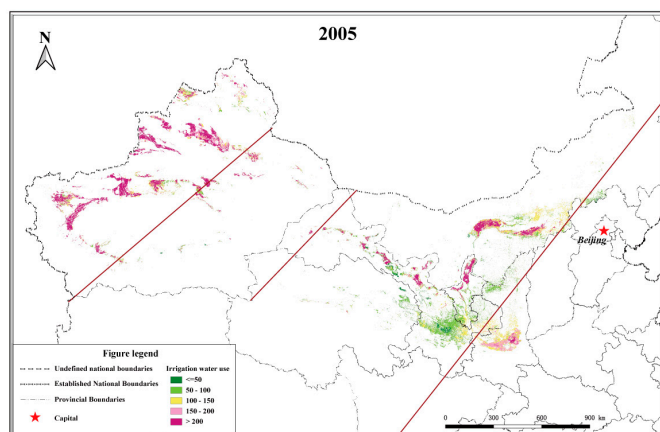
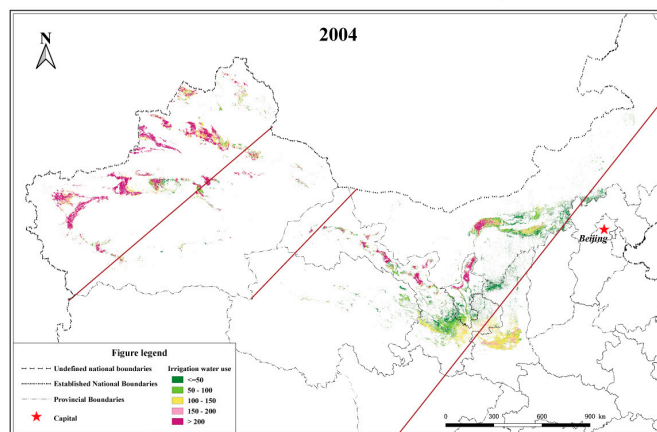
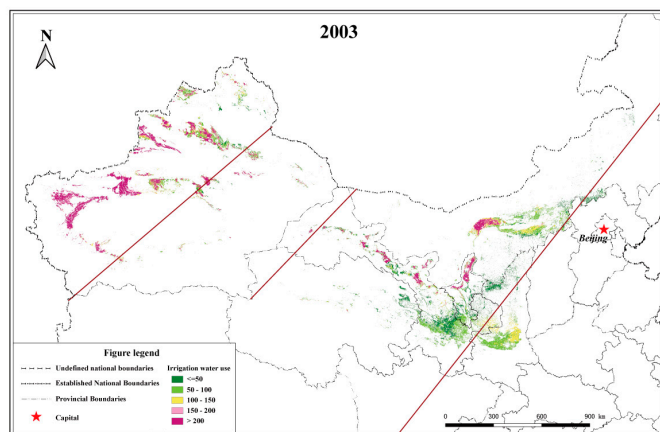
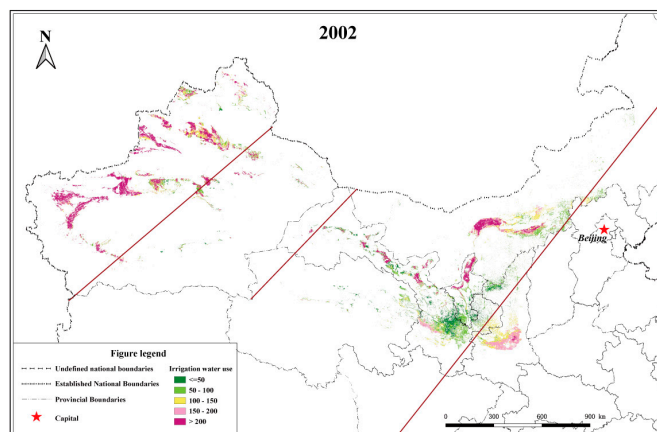
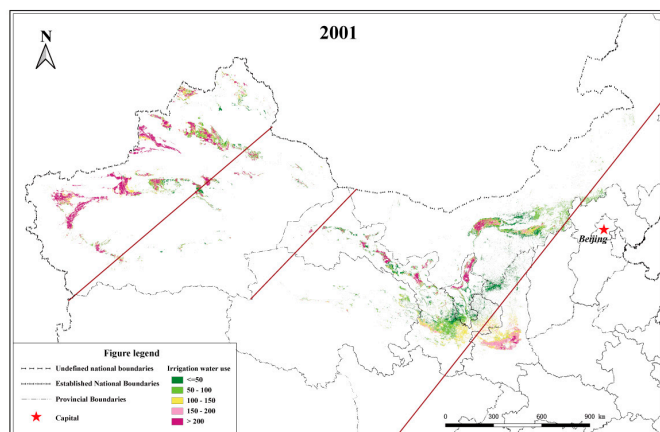
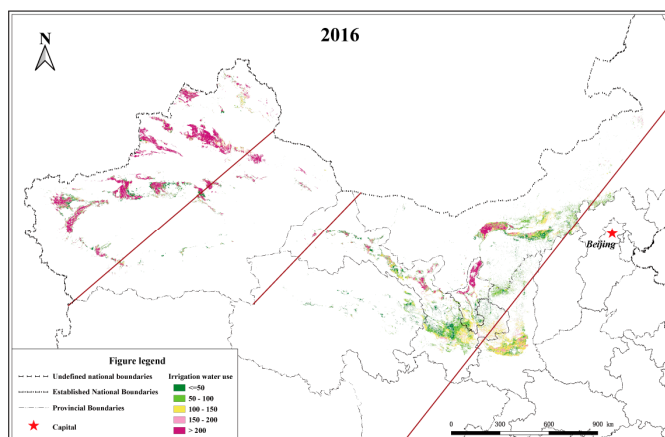
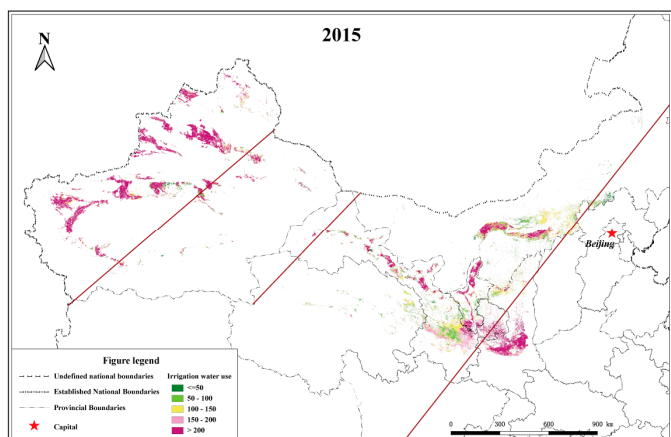
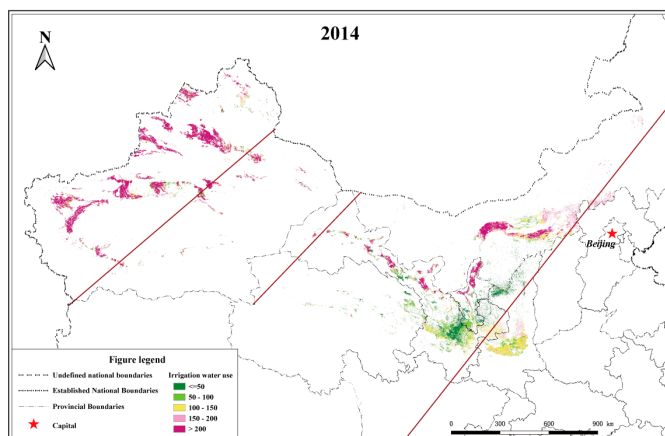
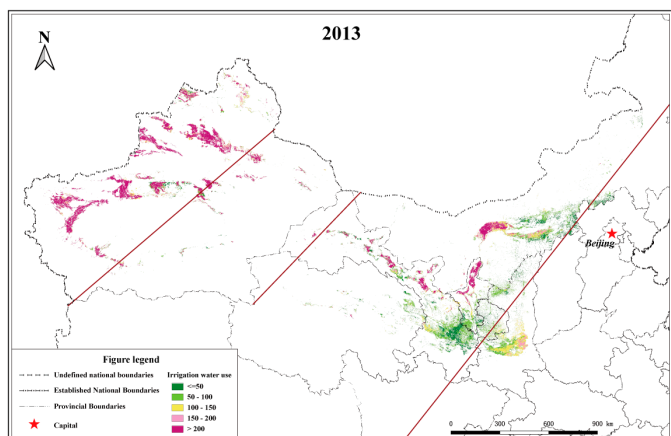
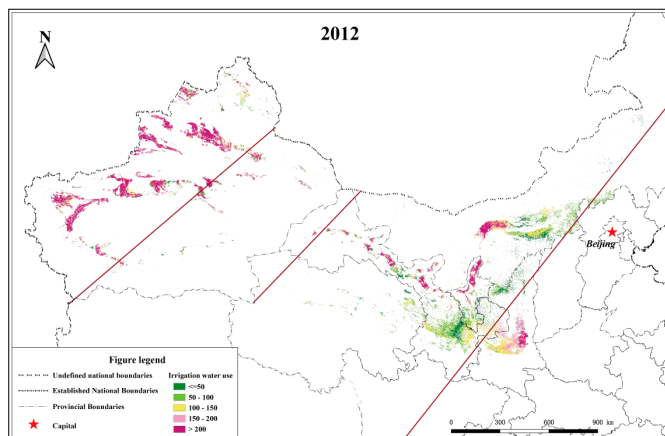
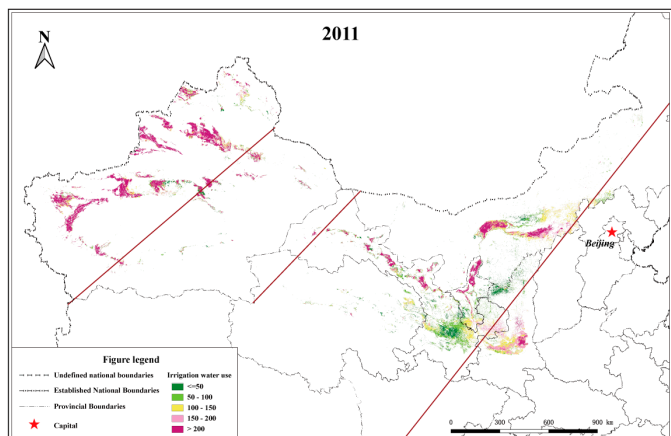
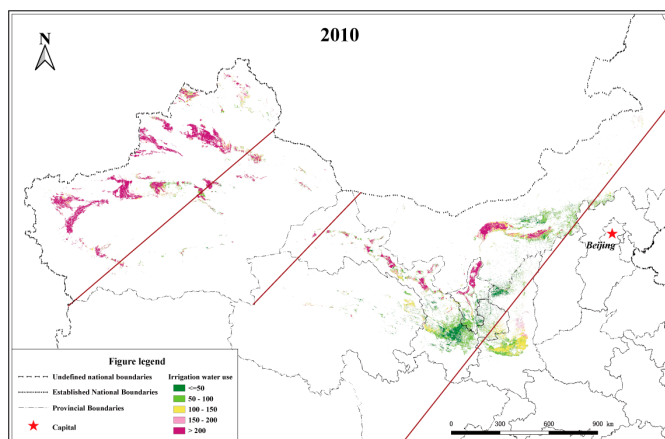
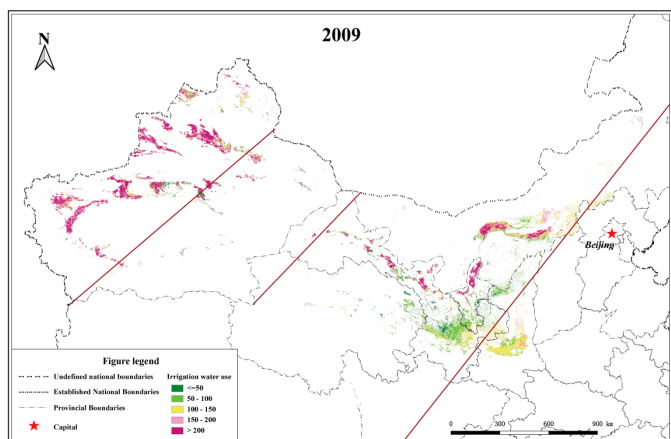


Figure S1. Spatial distribution of IWR from 2001 to 2020 in Northwest 'Three Water Lines' area





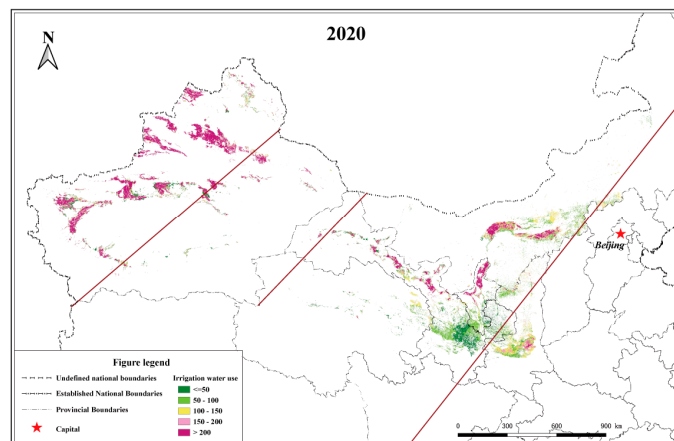
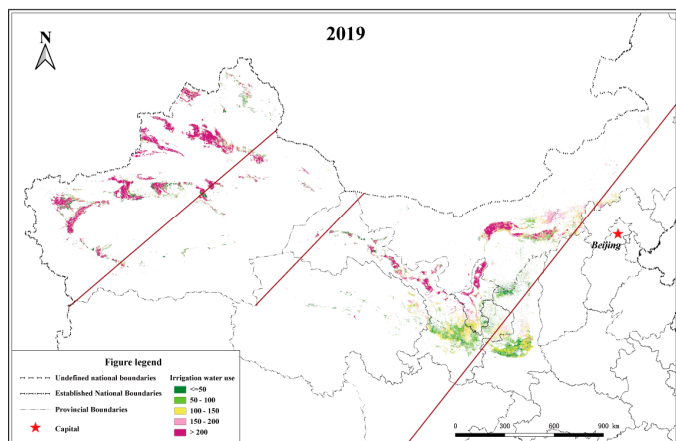
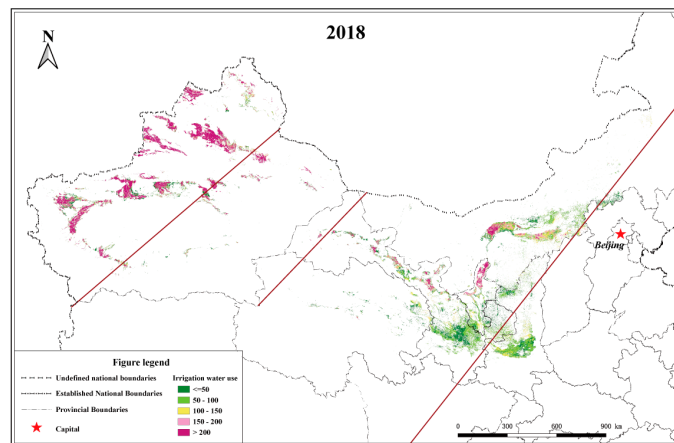
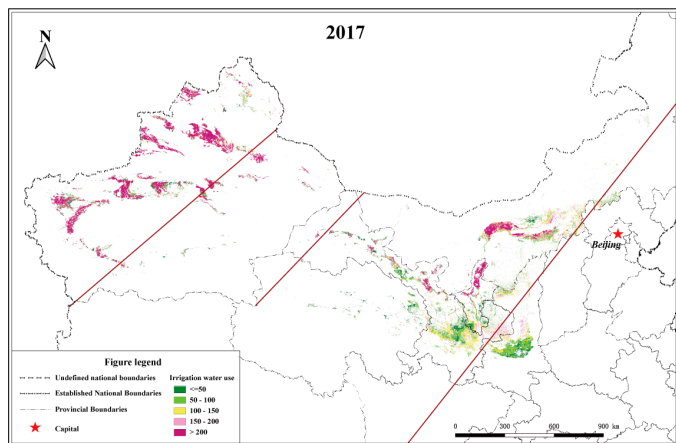
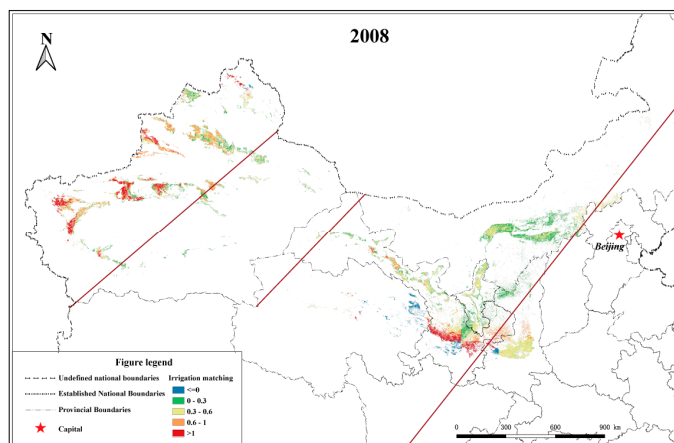
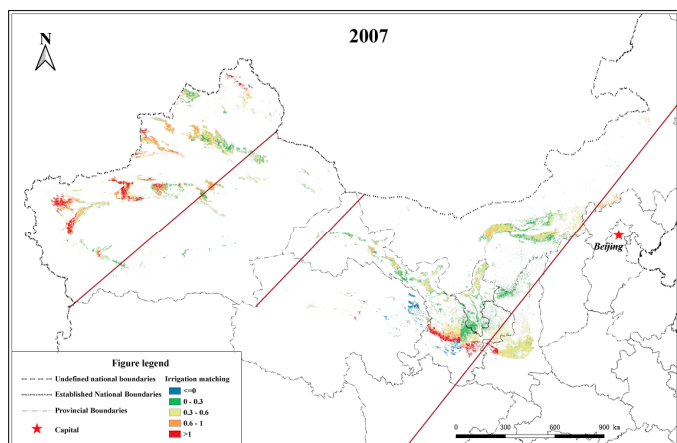
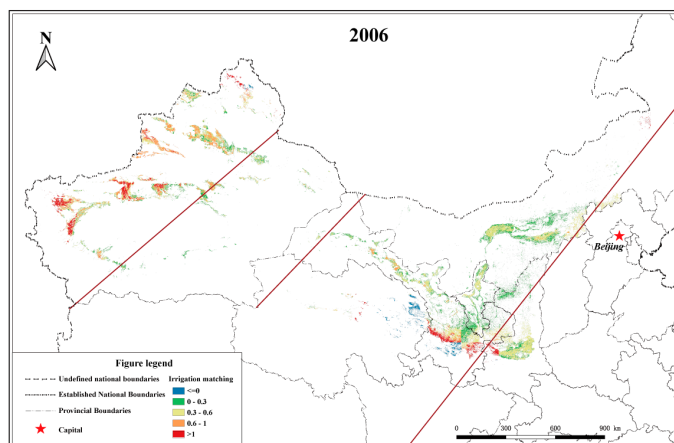
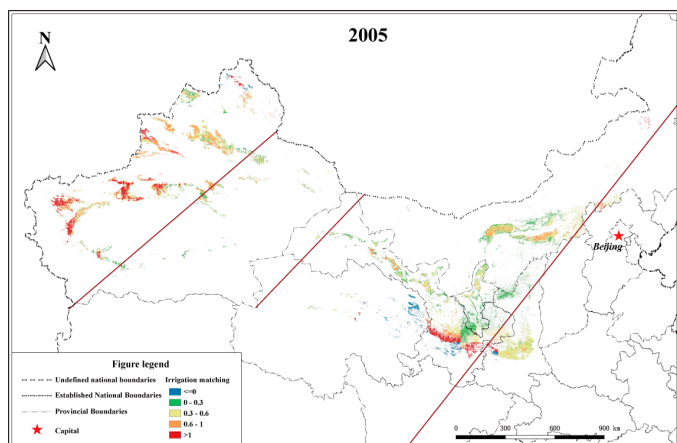
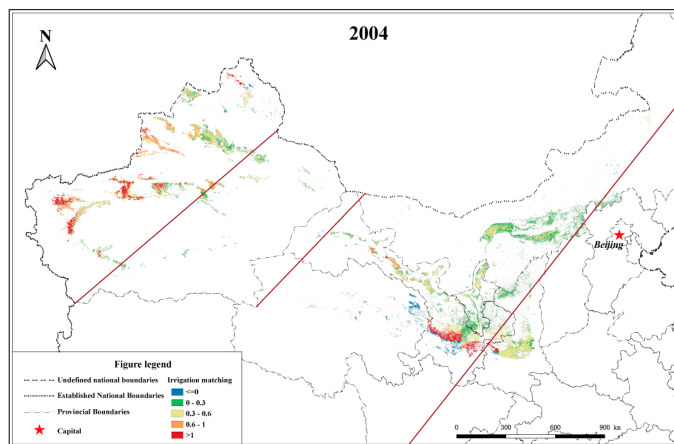
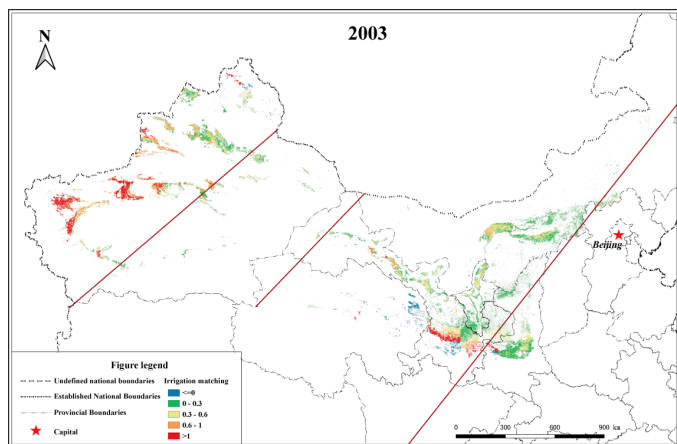
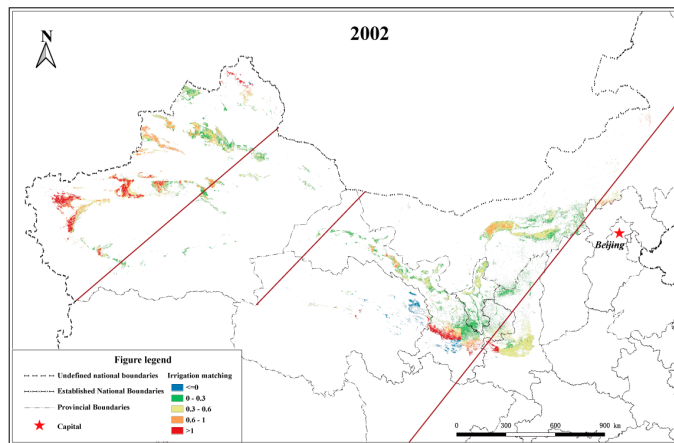
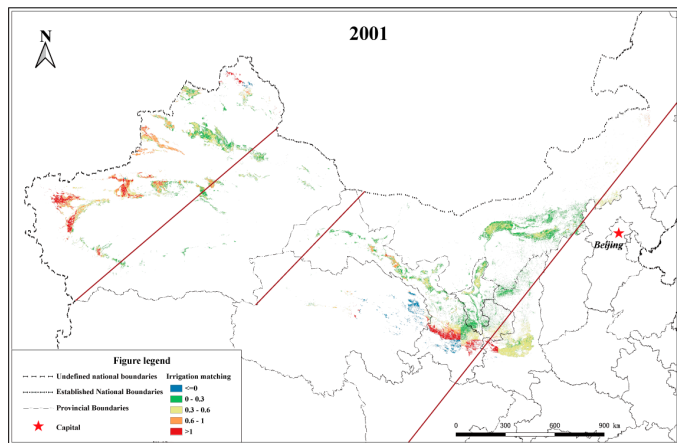
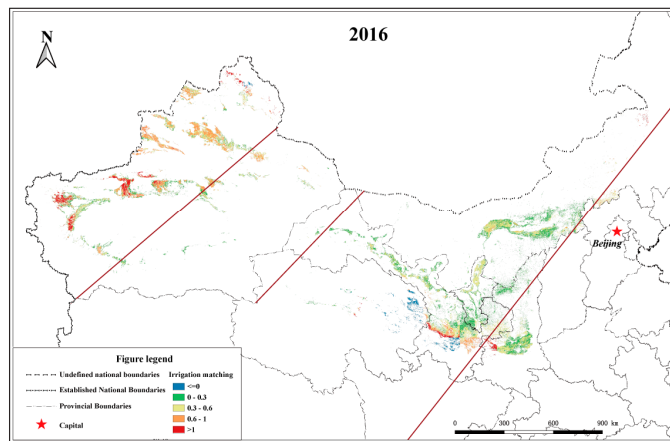
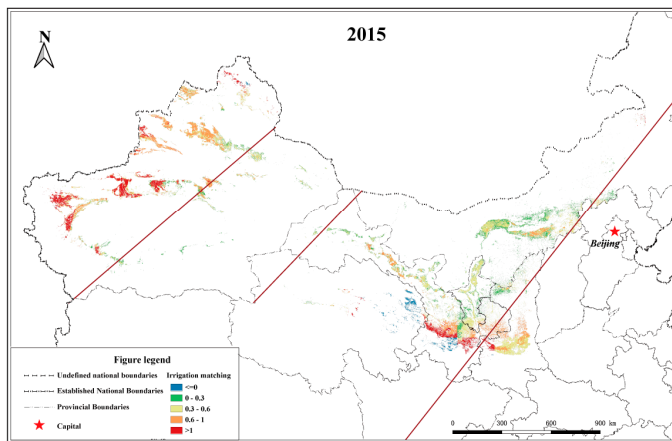
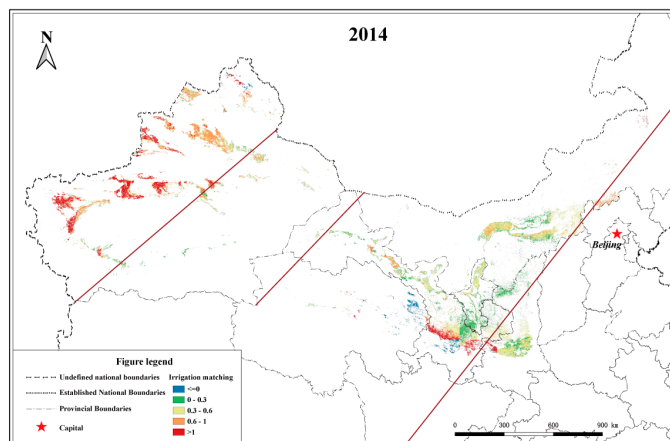
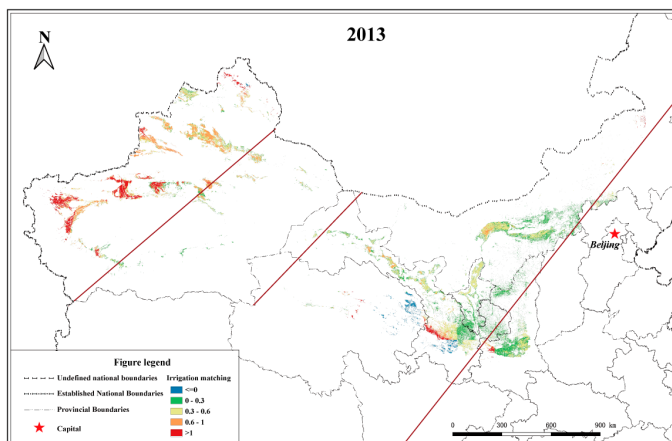
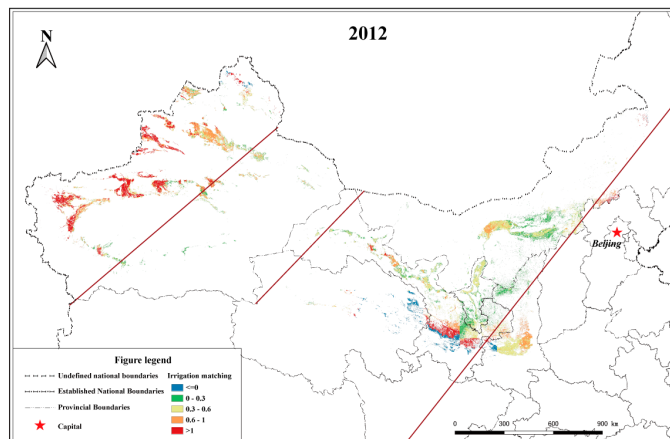
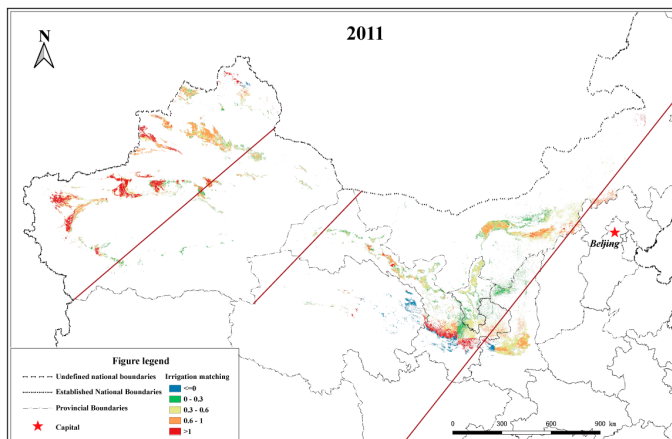
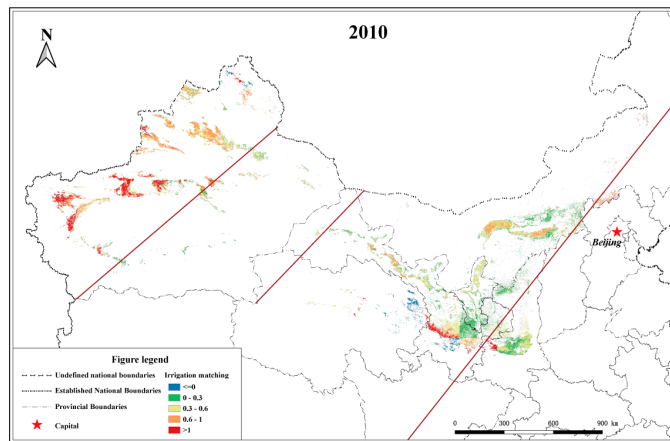
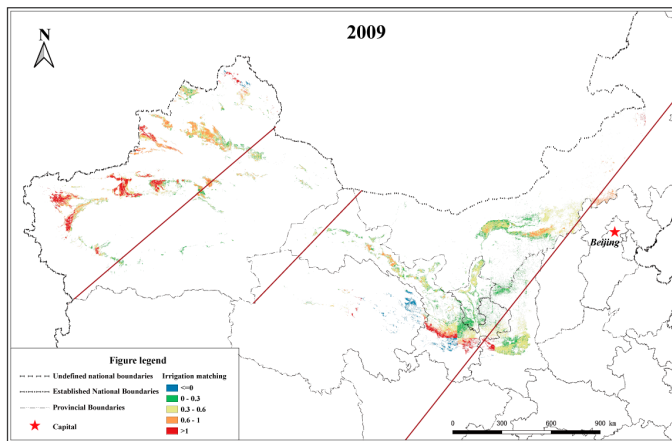


Figure S2. Spatial distribution of *EIW* from 2001 to 2020 in Northwest 'Three Water Lines' area





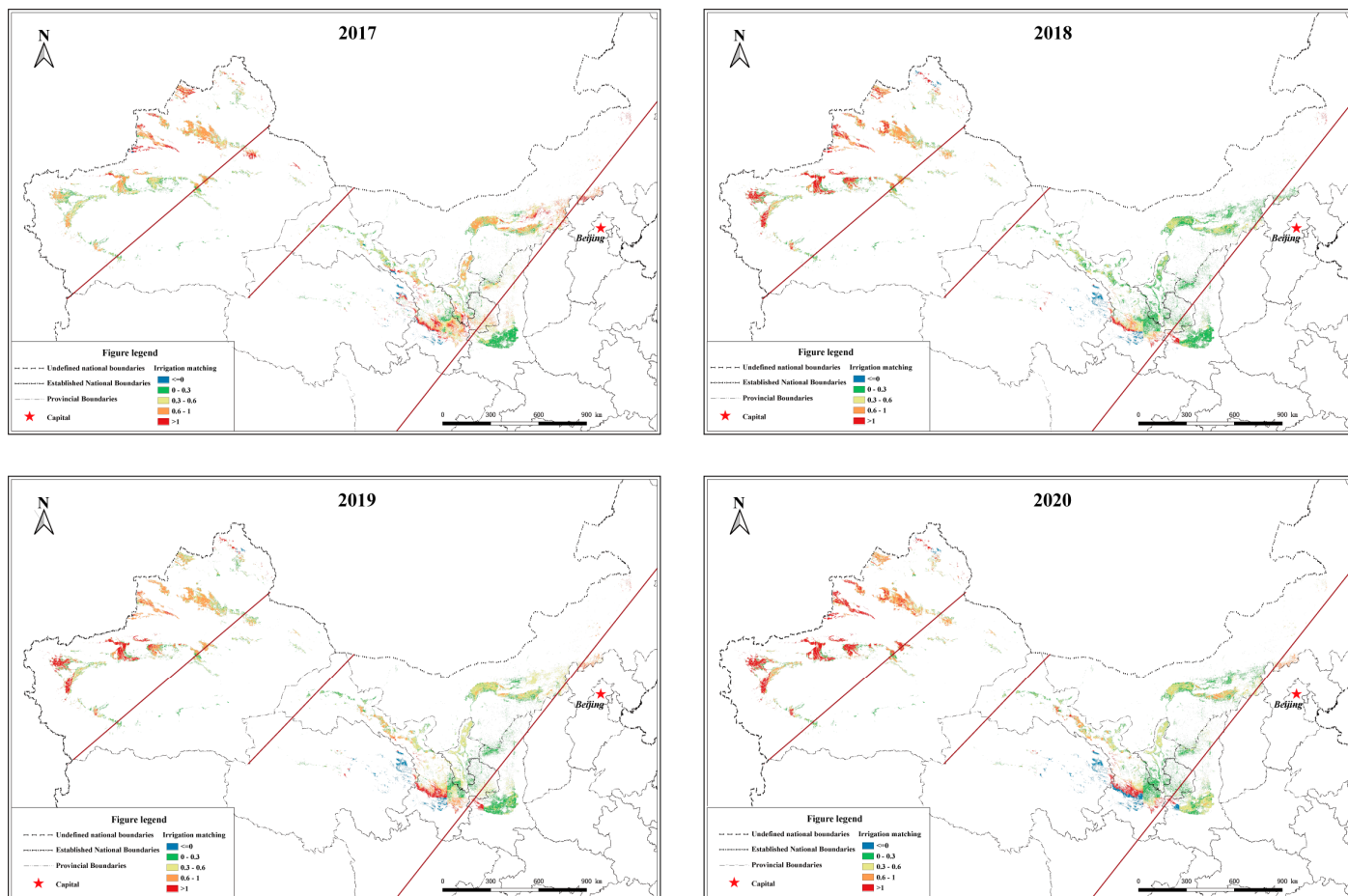


Figure S3. Spatial distribution of *IGCI* from 2001 to 2020 in Northwest 'Three Water Lines' area