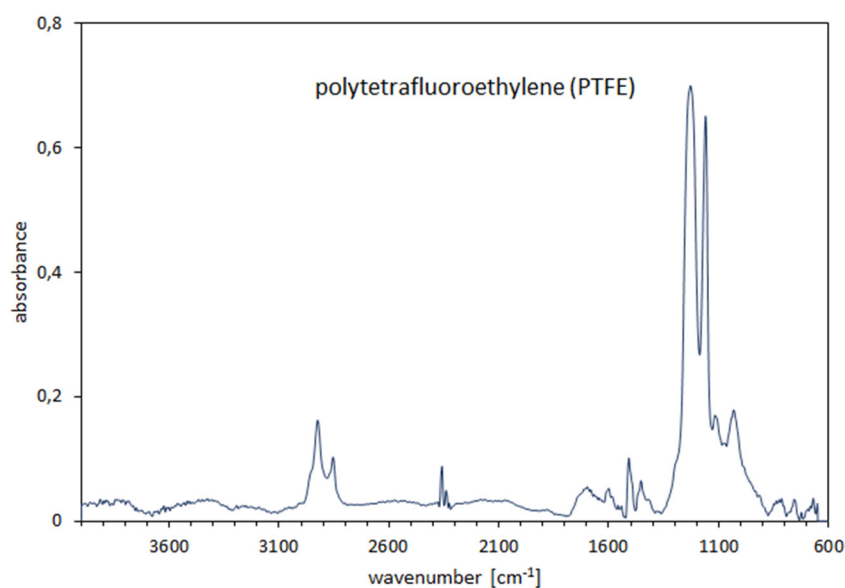


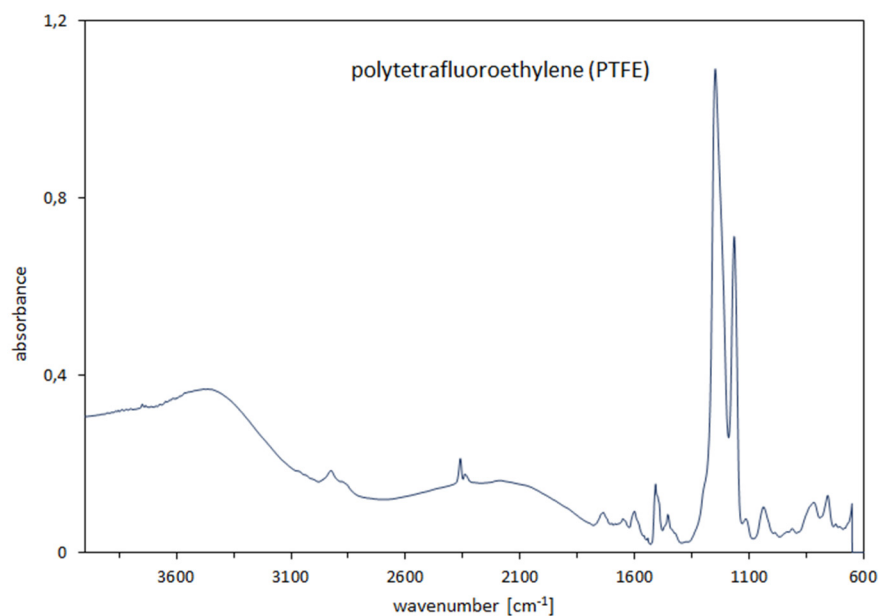
Supplementary material

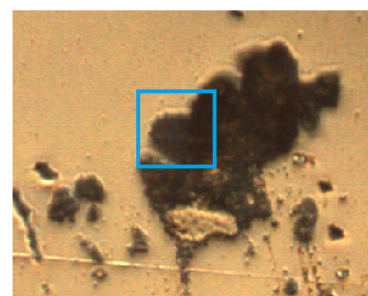
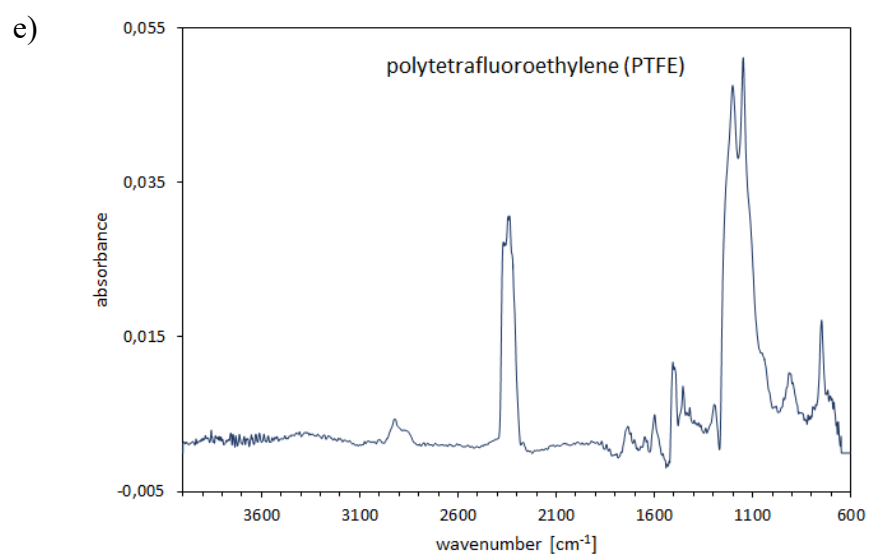
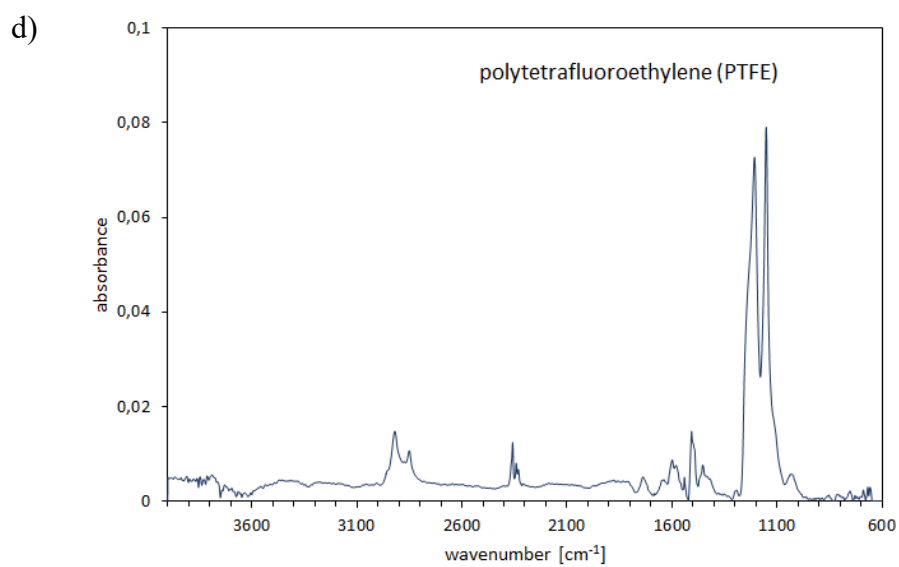
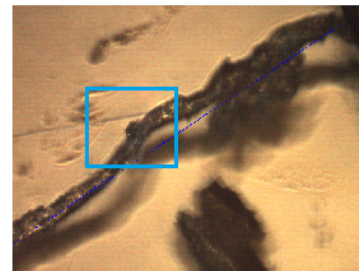
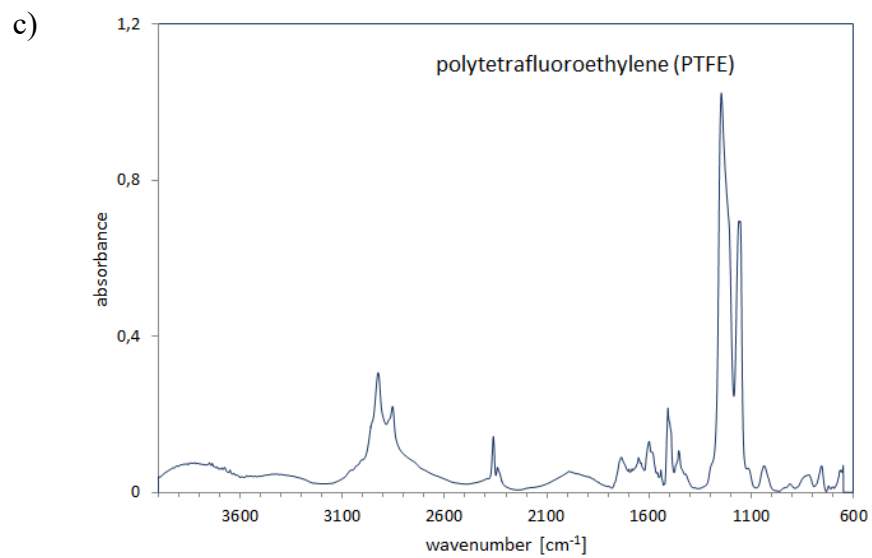
Figure S1. Images and micro-Fourier Transform Infrared spectroscopy peaks of different microplastic polymers found in stomachs of the *Pacifastacus leniusculus* caught in the River Wieprza in Darłowo between 2014 and 2018. The blue frames on the pictures of analyzed samples show the scanned region.

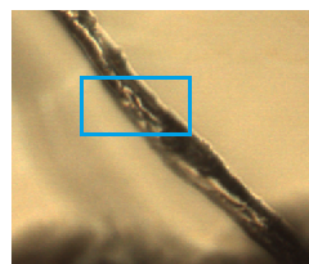
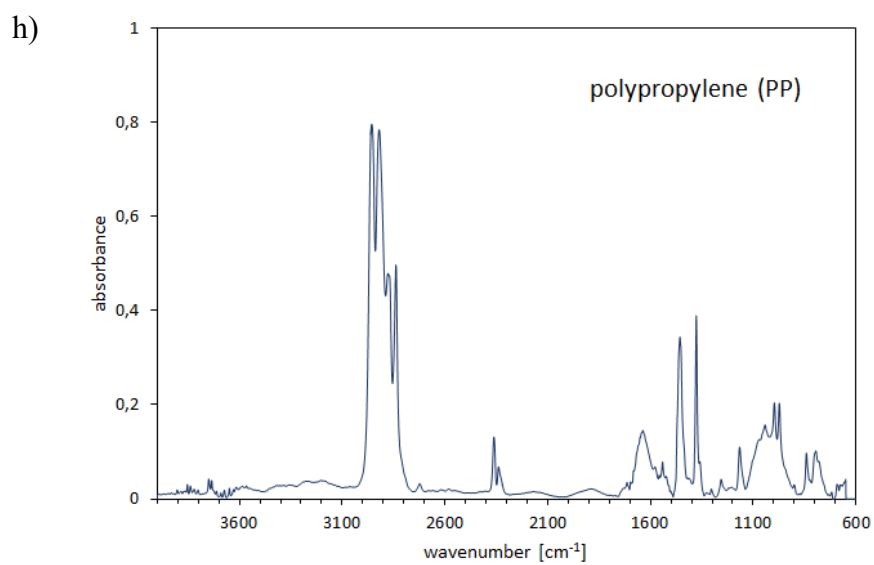
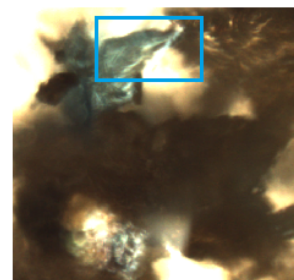
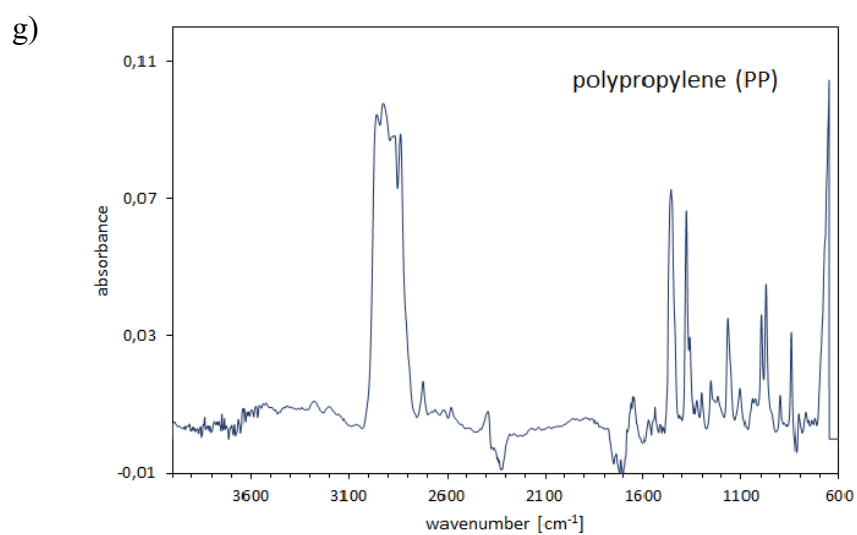
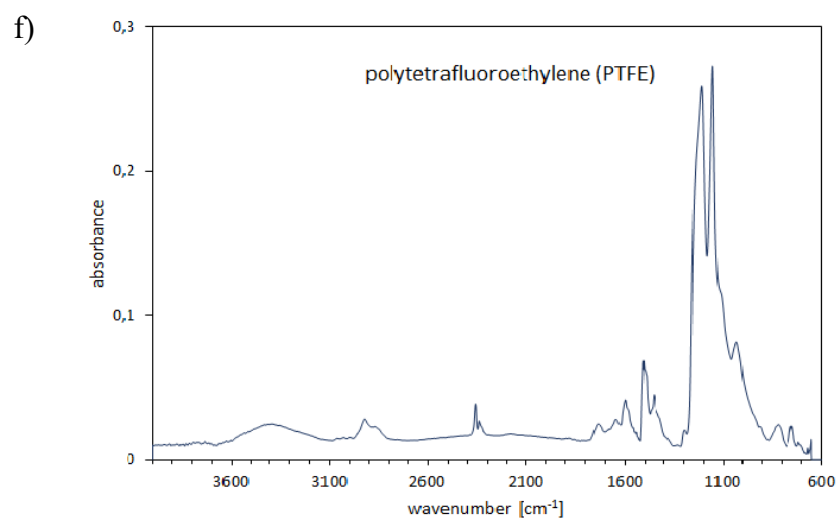
a)

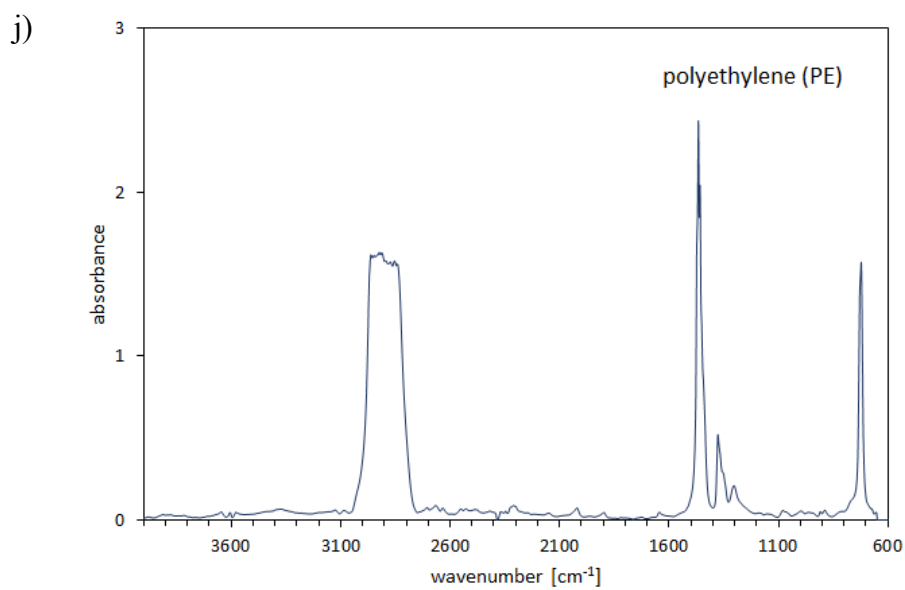
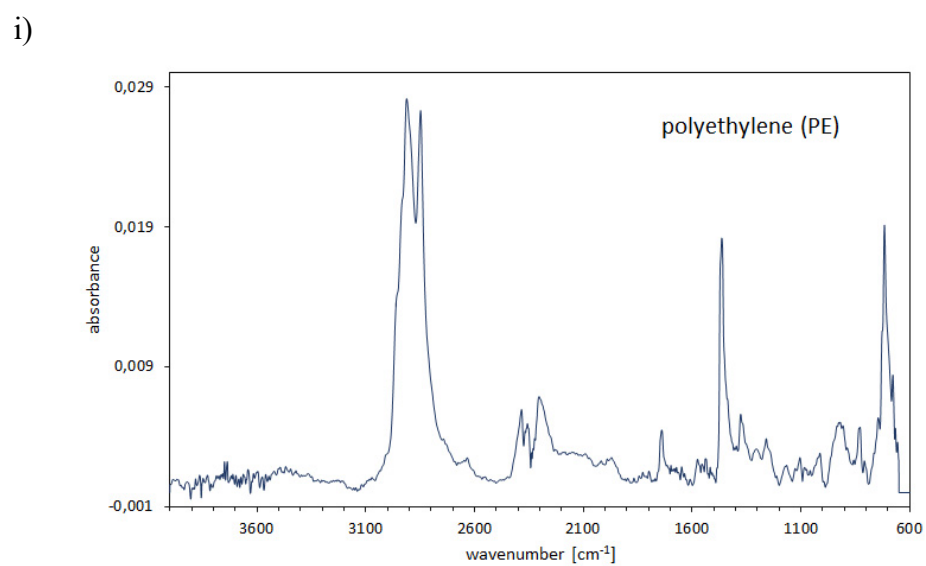
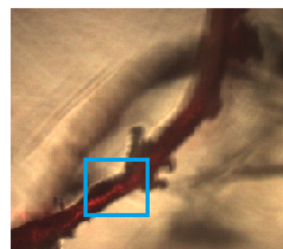
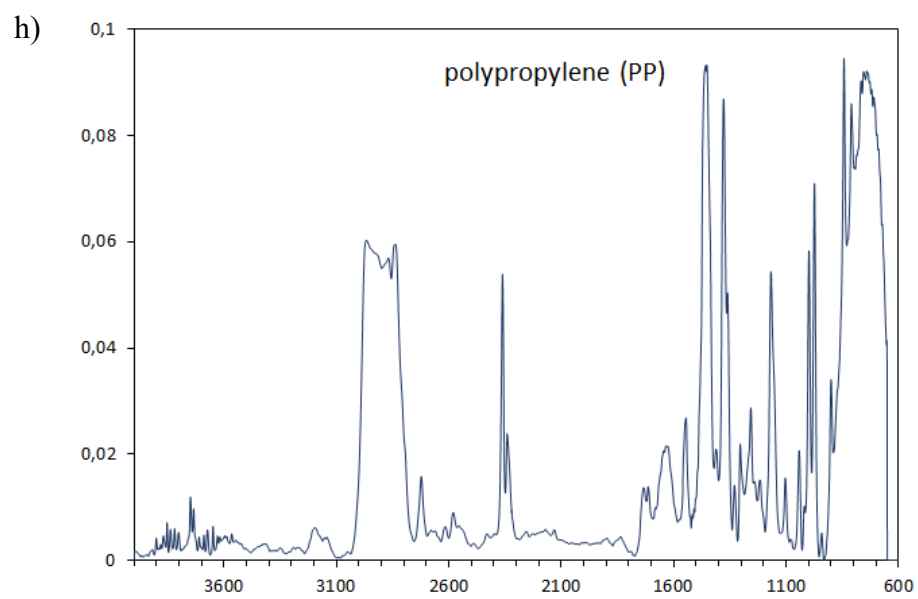


b)

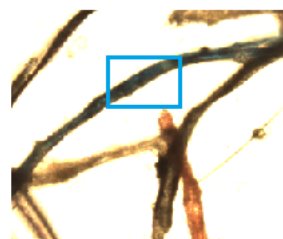
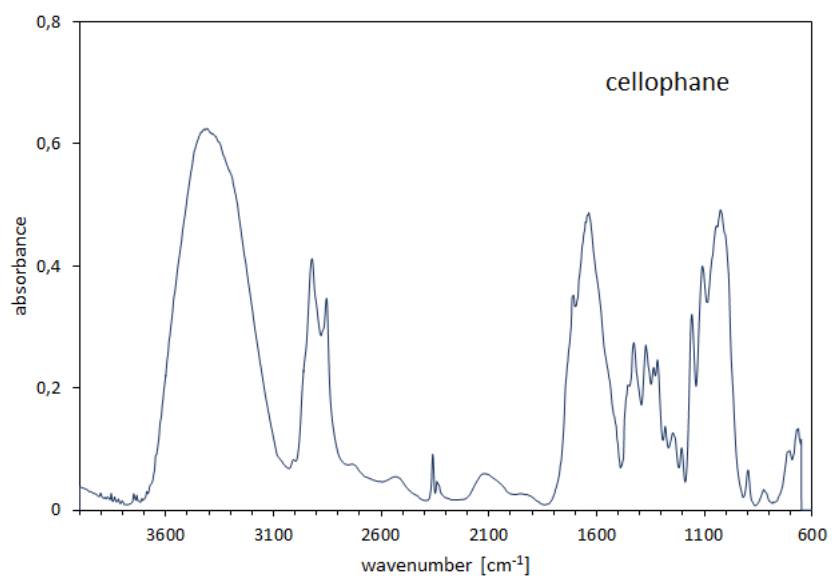




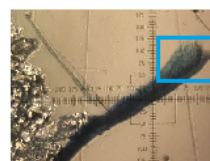
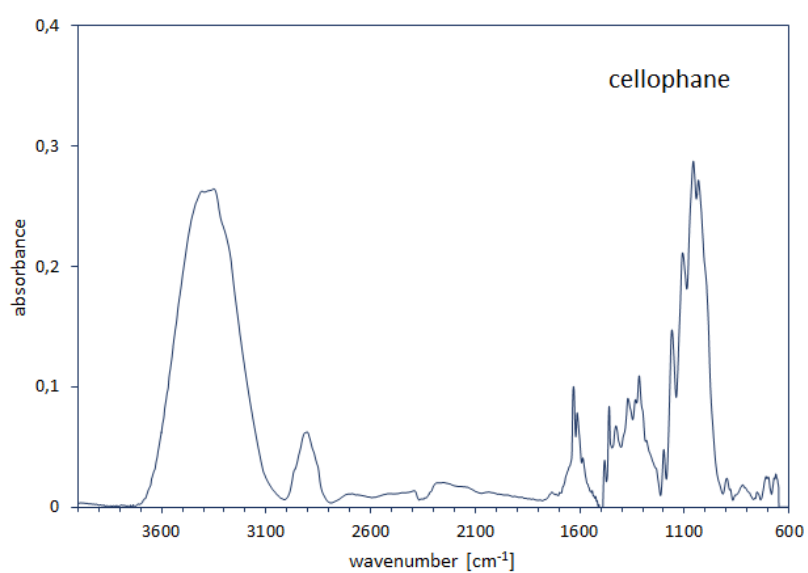




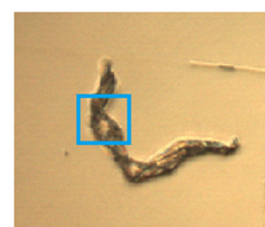
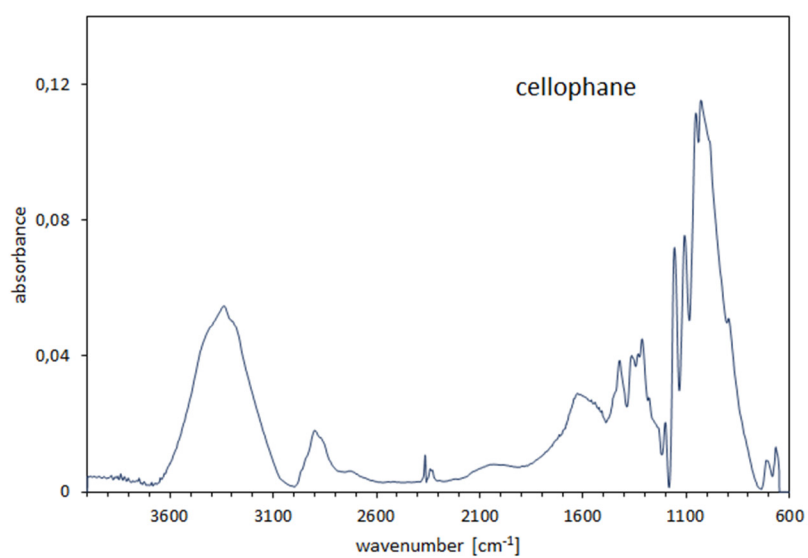
k)



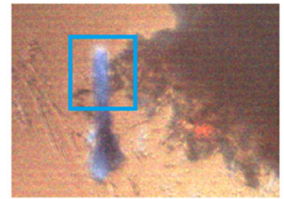
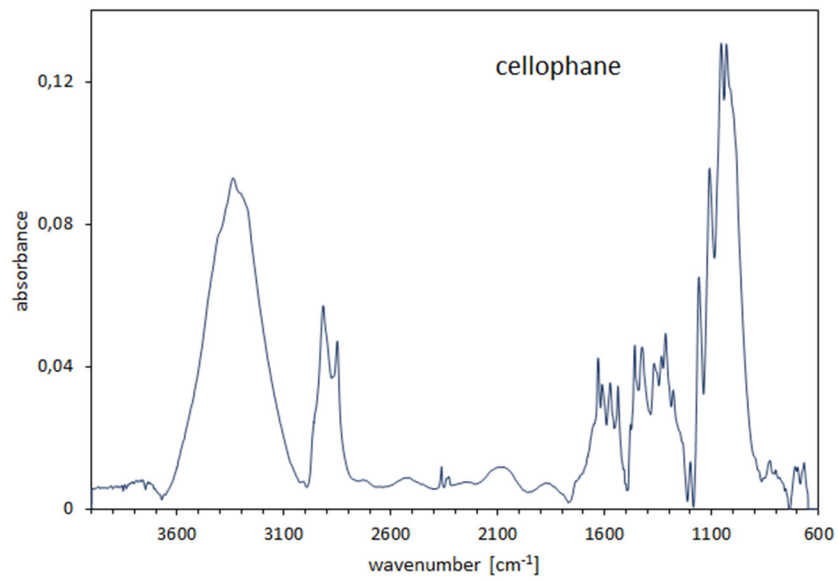
l)



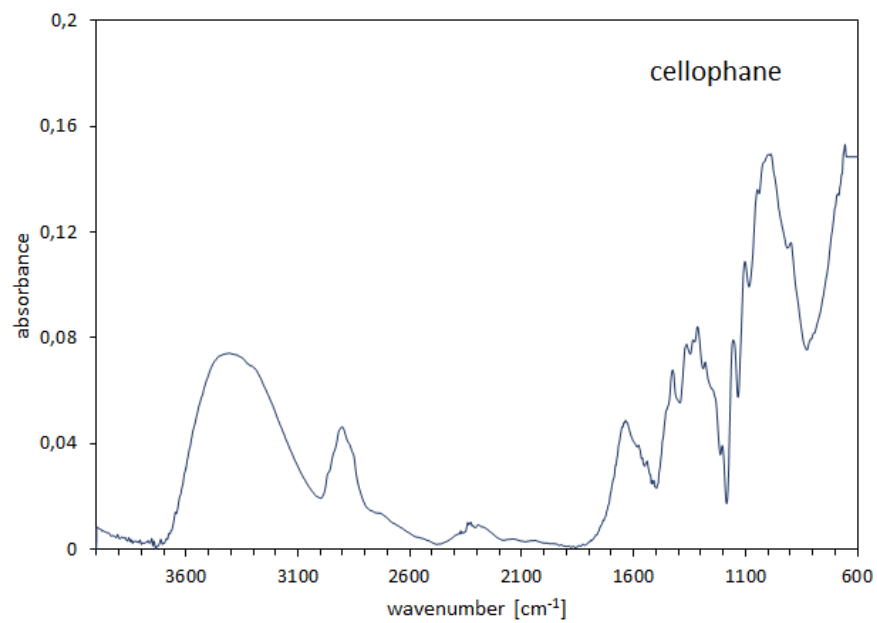
m)



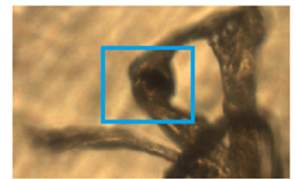
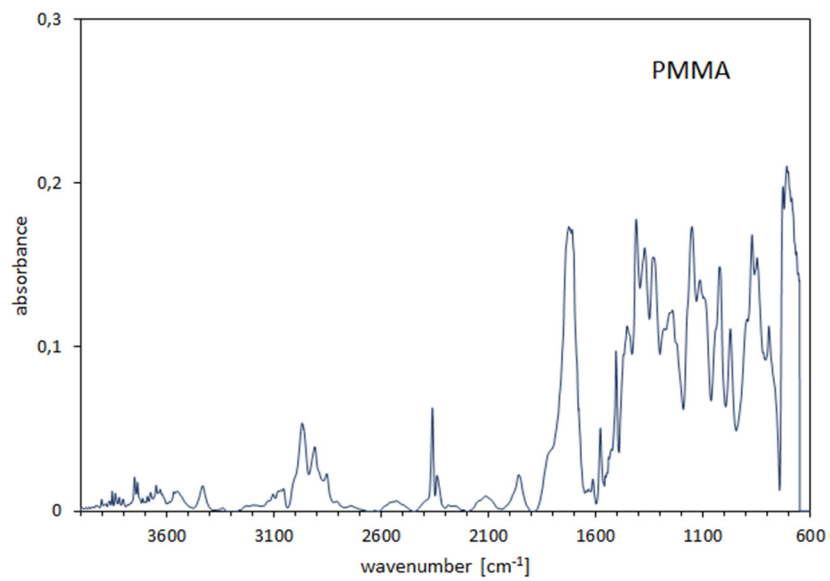
n)



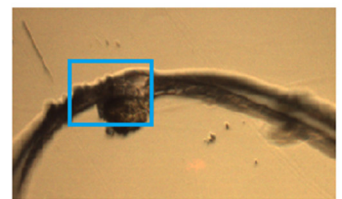
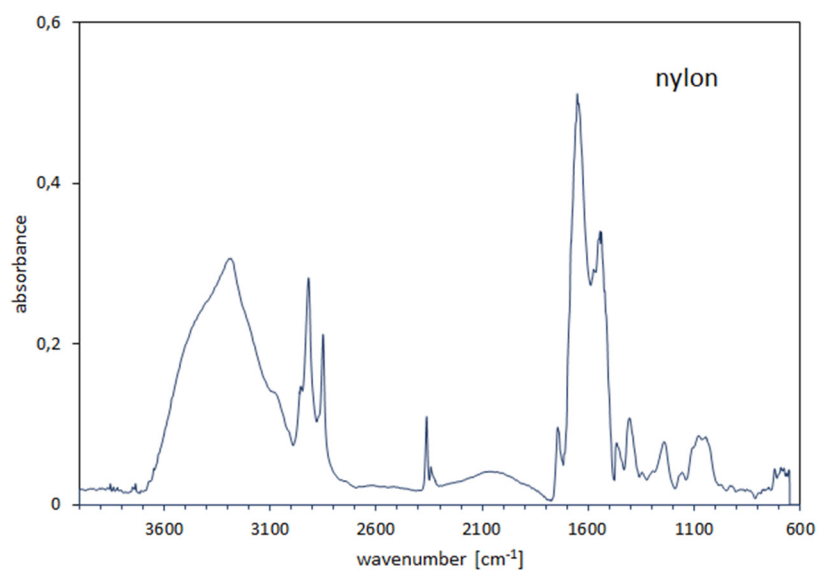
o)



p)



r)



Spectra of the references:

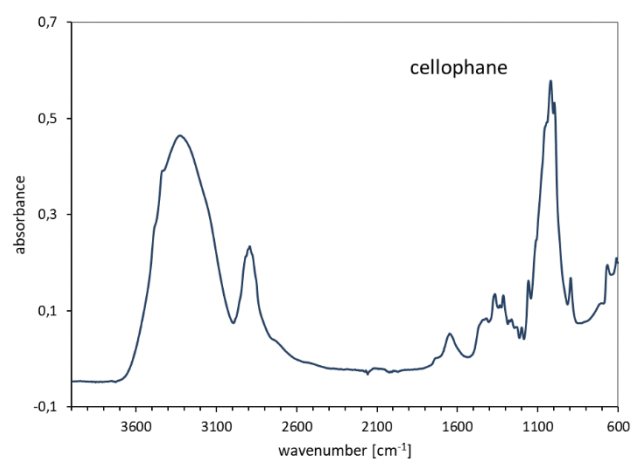
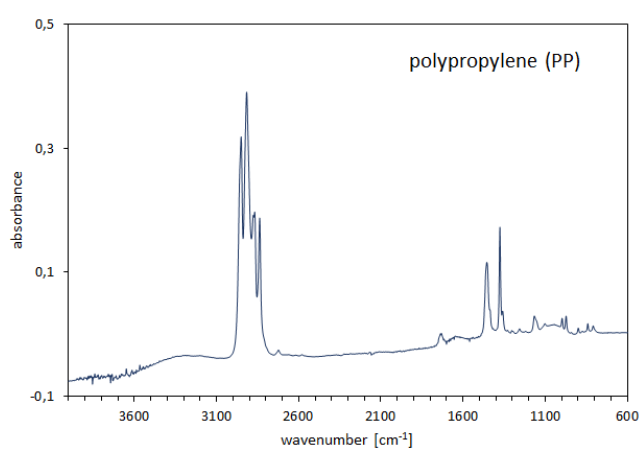
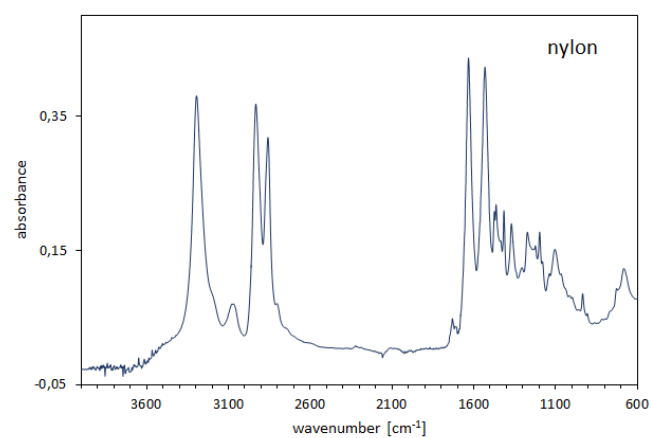
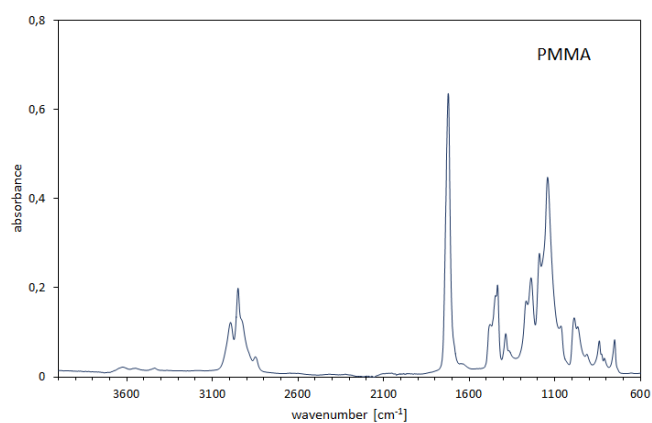
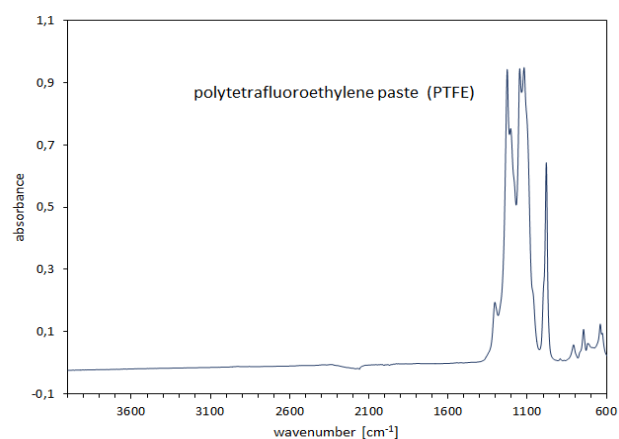
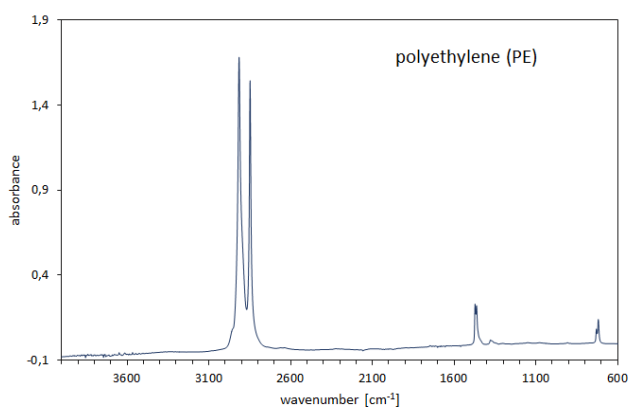


Table S1. The sex, mean total length and mean wet mass of the signal crayfish *Pacifastacus leniusculus* collected from Miastko and Darłowo.

| Number of collected crayfish | Sampling site | |
|---|---------------|---------------|
| | Miastko | Darłowo |
| with plastics found in stomachs | | |
| males | 0 | 10 |
| females | 0 | 5 |
| male: female ratio | - | 2:1 |
| mean total length [mm] | 0 | 91.42 ± 12.54 |
| total length range [mm] | 0 | 60.6-113.69 |
| mean wet mass [g] | 0 | 23.49 ± 9.43 |
| wet mass range [g] | 0 | 6.21- 36.86 |
| without plastics found in stomachs | | |
| males | 7 | 74 |
| females | 18 | 117 |
| male: female ratio | 1.0:2.5 | 1:1.5 |
| mean total length [mm] | 80.74 ± 21.80 | 99.53 ± 12.71 |
| total length range [mm] | 45.7-119.6 | 45.7-133.23 |
| mean wet mass [g] | 20.66±15.31 | 31.38 ± 12.89 |
| wet mass range [g] | 2.87-69.20 | 2.87- 69.19 |
| all specimens | | |
| males | 7 | 83 |
| females | 18 | 122 |
| male: female ratio | 1.0:2.5 | 1.0:1.5 |
| mean total length [mm] | 80.74 ± 21.80 | 98.99 ± 12.85 |
| total length range [mm] | 45.7-119.6 | 58.9-133.23 |
| mean wet mass [g] | 45.7 | 30.86 ± 12.83 |
| wet mass range [g] | 20.66 - 15.31 | 2.87-69.19 |