

Article

Identifying Efficient Nitrate Reduction Strategies in the Upper Danube

Angel Udias ^{1,*}, Anna Malagò ¹, Marco Pastori ¹, Olga Vigiak ¹, Arnaud Reynaud ¹, Francisco Javier Elorza ² and Faycal Bouraoui ¹

¹ European Commission—Joint Research Center, via E. Fermi 2749, 21027 Ispra (VA), Italy; anna.malago@jrc.ec.europa.eu (A.M.); marco.pastori@ext.jrc.ec.europa.eu (M.P.); olga.vigiak@jrc.ec.europa.eu (O.V.); arnaud.reynaud@toulouse.inra.fr (A.R.); faycal.bouraoui@jrc.ec.europa.eu (F.B.)

² Universidad Politecnica de Madrid, Escuela Tecnica Superior de Ingenieros de Minas, 28003 Madrid, Spain; jelorza@dmami.upm.es

* Correspondence: angel.udias-moinelo@jrc.ec.europa.eu; Tel.: +39-033-278-3067

Academic Editor: Joan M. Brehm

Received: 31 May 2016; Accepted: 22 August 2016; Published: 30 August 2016

Abstract: Nitrogen losses in the form of Nitrate (N-NO₃) from point and diffuse sources of pollution are recognized to be the leading cause of water body impairment throughout Europe. Implementation of conservation programs is perceived as being crucial for restoring and protecting the good ecological status of freshwater bodies. The success of conservation programs depends on the efficient identification of management solutions with respect to the envisaged environmental and economic objectives. This is a complex task, especially considering that costs and effectiveness of conservation strategies depend on their locations. We applied a multi-objective, spatially explicit analysis tool, the R-SWAT-DM framework, to search for efficient, spatially-targeted solution of Nitrate abatement in the Upper Danube Basin. The Soil Water Assessment Tool (SWAT) model served as the nonpoint source pollution estimator for current conditions as well as for scenarios with modified agricultural practices and waste water treatment upgrading. A spatially explicit optimization analysis that considered point and diffuse sources of Nitrate was performed to search for strategies that could achieve largest pollution abatement at minimum cost. The set of optimal spatial conservation strategies identified in the Basin indicated that it could be possible to reduce Nitrate loads by more than 50% while simultaneously provide a higher income.

Keywords: Best Management Practices (BMP); SWAT; multi-objective optimization; point and diffuse sources pollution; nutrients reduction

1. Introduction

Nitrogen (N) losses from point (PS) and diffuse sources (NPS) are recognized to be the leading causes of water body impairment throughout Europe [1]. Despite improvements of water quality in recent years, many aquatic ecosystems in Europe are still at risk of eutrophication from excessive N concentrations [2,3]. Agriculture has been estimated to contribute around 55% of the N loads reaching the European seas while point sources are responsible for around 25% [4]. The European key policy instrument to protect inland (surface and groundwater), transitional and coastal water resources is the Water Framework Directive (WFD) [5]. The European Commission established ecological objectives for all European waters, aiming at more integrated and coherent approach for water protection. The WFD complemented two major pieces of legislations that were put in place in the early 1990s to control the amount of nutrient pollution of European waters, i.e., the Nitrates Directive [6] and the Urban Waste Water Treatment Directive [7]. The Nitrates Directive regulates the emission of Nitrogen in the form of

Nitrate (N-NO_3) from agricultural activities by setting manure application limits, and prescribes the implementation of action programs in Nitrate vulnerable zones. The Urban Waste Water Treatment Directive requires all Member States to implement efficient wastewater treatment and establishes wastewater to undergo at least secondary treatment (C-plants) when discharged into sensitive areas. After 25 years of implementation, many problems linked to high Nitrate concentrations still affect a large number of water bodies in Europe.

Developing efficient management strategies to fulfill the EU legislation requirements needs to consider simultaneously point and diffuse sources of Nitrate. Point source emissions in practice are easy to control as their location and characteristics are well known. Changing the treatment level of a wastewater treatment plant (WWTP) has an immediate effect on the discharged water quality. On the other hand, nonpoint sources are more difficult to control due to their diffuse nature. Furthermore, there is usually a lag time between the implementation of a remedial measure and the environmental response [8].

Management strategies should also consider the location of sources of pollution in order to choose the most appropriate conservation strategies that will achieve the required environmental targets, while being economically and socially viable. A targeted implementation of Best Management Practices (BMPs) at selected locations in a watershed has been recognized as an effective strategy to improve water quality [9]. The state of the art approach is thus to design a local specific BMPs strategy [10]. However, this could lead to a multiplication of the implementation of many BMPs in the watershed, without ensuring that the environmental targets at the watershed outlet are achieved [11]. Interactions between BMPs may also significantly affect their individual performances at a watershed scale. Harrell and Ranjithan [12] emphasized that a reduced number of management practices could achieve the same outcomes as a multitude of measures implemented throughout the watershed.

Since management practices are usually implemented under a limited budget, costs associated with unnecessary/redundant management actions may jeopardize attainability of designated water quality goals. Consideration of the implementation and maintenance costs of each conservation strategy is essential for the identification of effective management strategies, and to increase the acceptability of the selected measures. Thus, a balance has to be achieved between the environmental and economic implications of the many possible conservation strategies. While it is always desirable to implement a BMP that costs the least and gives the most reduction in pollutant load, win-win solutions are few and far between, and the environmental targets can only be achieved through the appropriate combinations of spatially, temporally and economically tailored sets of conservation measures [13,14]. When several management practices are to be considered together across a watershed, the identification of efficient conservation strategies becomes a spatial multi-criteria optimization problem. Spatial optimization of land use and conservation practices under various objective functions/constraints can help sustainably manage limited resources [14–19].

Evolutionary optimization methods such as genetic algorithms [20] are popular in spatial optimization [18–24]. The most frequent method of spatial optimization is to link dynamically a watershed simulation model with an optimization algorithm [18,19,24–27], wherein watershed model outputs are used to estimate the objective functions of the optimization algorithm. The Soil and Water Assessment Tool (SWAT, [28,29]) is a watershed model commonly used to simulate the impact of land use and land management changes on water quantity and water quality [28]. Interest has grown in spatial optimization of conservation practices using genetic algorithms and SWAT (e.g., [18,19,23,24]). Most of the previous works have focused either on using a single objective function for optimization that combines BMP effectiveness with cost [15,21] or on sequential optimization of effectiveness and cost as separate objective functions [30,31], i.e., constraining one objective function during optimization of the other. In contrast, simultaneous optimization of economic and environmental objectives allows identifying trade-off strategies [18,23,24]. Furthermore, none of these studies considered both point and diffuse sources, while it is possible that the most efficient strategies would consider a combination of BMPs that target either type of pollution.

The overall goal of this work was to explore potential gains in searching cost-effective solutions to reduce N-NO_3 pollution in the large Upper Danube Basin (132,000 km^2) by considering both point and

diffuse sources. The Basin is characterized by the highest values of N-NO_3 concentration in the surface water in the entire Danube [32], thus Nitrate pollution abatement in the region appears crucial to restore the good ecological status of the Danube River [33]. We hypothesize that important reductions of N-NO_3 in the river network can be achieved at affordable cost by applying spatial targeting approaches to identify optimal conservation practice combinations. We used SWAT to simulate point and diffuse N-NO_3 emissions and fate in a watershed. Starting from current basin conditions, we first analyzed the impact of single conservation measures applied uniformly across the region (iterative simulations) to assess maximum N-NO_3 abatement level that could be reached. We then ran multi-objective, spatially explicit optimization routines to search for solutions that considered several conservation actions in different parts of the Basin.

2. Study Area

The Upper Danube Basin covers about 132,000 km² across Austria, Germany, Czech Republic and Slovakia, extending from the Danube source down to the Gabčíkovo Reservoir near Bratislava (Figure 1). The amount of precipitation in the Upper Danube Basin shows a distinct gradient with the altitude. It rises from 650–900 mm/year in the lowland areas to more than 3000 mm/year in the high mountain exposed to the west and north [34]. Major landuses within the watershed are forest (38%) and pastures (18%) mainly extended in Alpine regions, cropland (34%) in flat areas, and urban land and water covering approximately 10%. The period of high streamflow is mainly controlled by precipitation and snow melting during late winter and early spring. The mean annual discharge of the Danube at Bratislava, i.e., the Basin outlet, is 2048 m³/s [35]. N-NO_3 is the main component of Nitrogen transported in the Danube River (about 70%; [32]), with mean N-NO_3 concentration around 2.3 mg/L.

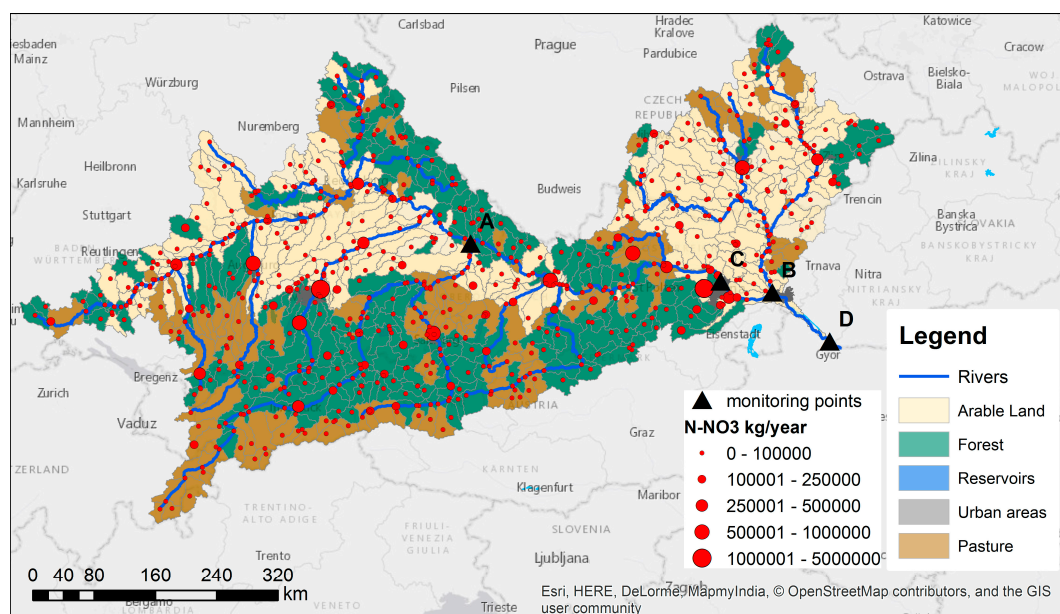


Figure 1. The Upper Danube watershed with the distribution of the main classes of land cover, main rivers and N-NO_3 annual loads from point sources. The letters A-B-C-D indicate the location of four stations for which time-series of N-NO_3 concentrations in the rivers are provided in Figure 3.

3. Methodology

The analysis was conducted with the R-SWAT-DM framework [36]. R-SWAT-DM is an integrated tool that enables spatially explicit decision-making, helping stakeholders to better understand the main water quality problems and finding the most efficient practices for a given watershed. The framework assesses the economic and water quality impacts of different types/levels of management practices

and compares them with the Baseline Scenario (BLS). It applies different BMPs at different location, thus allowing the evaluation of their overall impact and search for spatial combinations that are most appropriate to improve the water quality at a minimum cost.

Users can run single or combined simulations of spatially explicit management practices, or iterative simulations whereby all management practices of one type are changed simultaneously step-wise in a fixed range of values. Alternatively, they can also choose to run a multi-objective optimization process. In this case, users should specify the environmental objective, choosing among the available options, the management practices to be considered. Once the simulation and/or optimization process has finished, the user can analyze and compare the management scenario outputs graphically and statistically. The framework can also generate maps with detailed spatial information about a selected scenario.

The framework includes the following main components: (1) a watershed biophysical model (SWAT) for simulating hydrologic and water quality processes under current conditions and management scenarios; (2) an economic module to estimate the monetary value of each management scenario; and (3) an optimization engine to search for trade-off management scenarios according to environmental and socioeconomic objectives. The framework can model nutrient reduction measures related to both PS (WWTP upgrading) and NPS (crop fertilization and irrigation strategies).

The steps of the analysis for the Upper Danube Basin were: (1) set up SWAT model to simulate N-NO₃ fluxes under baseline (BLS) and alternative management scenarios; (2) define environmental and economic objectives; (3) apply a multi-objective simulation/optimization tool; (4) perform a sensitivity analysis for the most relevant components of model; and (5) identify optimal spatial allocation of best nutrient management practices.

3.1. Biophysical Model Description

SWAT [29] was used to assess the impact of point sources and land use management practices on N-NO₃ fluxes and on agricultural yields. The SWAT model integrates all relevant eco-hydrological processes including water flow, surface runoff, percolation, lateral flow, groundwater flow, evapotranspiration, transmission losses, nutrients and sediments, vegetation growth, land use, and water management. The simulation of watershed hydrology with SWAT is divided into two main phases: the land phase and the routing phase of the hydrologic cycle, which controls the amount of water, sediment, and nutrients into the main stream network. Essentially, SWAT uses the water balance approach to simulate watershed hydrologic partitioning [29]. Watersheds are divided into spatially linked subbasins; the subbasins are divided into Hydrological Response Units (HRUs) with unique soil/land use and slope characteristics. The land phase is solved at HRU level, which determines water flow and nutrient load outputs; these outputs are routed through the subbasin and subsequently, in the water phase, through the stream network till the watershed outlet.

SWAT set-up for the Upper Danube Basin comprised several sources: (a) Digital Elevation Map (DEM) of 100 × 100 m, obtained from the Catchment Characterization Modeling version 2 (CCM2) DEM [37]; (b) soil map of 1 × 1 km, obtained from the Harmonized World Soil Database (HWSD) [38]; (c) watershed and stream delineation, based on the CCM2 database for continental Europe [37]; and (d) EFAS-METEO climate data including daily precipitation, temperature, solar radiation, wind speed and relative humidity with spatial resolution of 25 km [39].

A land use map of 1 × 1 km for year 2000 was built from the combination of databases [40–43]. In the subbasins with dominant arable land, the crops were distributed according to the EUROSTAT [44] crop statistics at district level (NUTS 2) using an ad hoc land use assignment routine. The Upper Danube was discretized into 753 subbasins ranging in size from 3 ha to 1011 km², with an average area of 143 km². From the combination of land use, soils and slopes, 822 HRUs were defined, 75 of which were urban areas [45]. Point sources were defined in 533 sub-basins (more than 70% of all subbasins) using the European waste water treatment database WWTPD [46] (Figure 1). In the SWAT model

only one single point source can be defined per subbasin; hence a point source represents all the point sources comprised in the subbasin.

Crop management operations were based on the heat units approach that were calculated at regional level as detailed in Wriedt et al. [47]. Fertilization was based on outputs from the CAPRI model [40]. All arable land (291 HRUs) was fertilized, however the main fertilized crops were annual row crops, winter and summer cereals, and managed pastures (Table 1). Fertilization management practices (type and schedule) were based on SWAT literature and SWAT database of fertilizers [28] adapted to the European context [48]. Figure 2 shows the applied fertilization patterns used in the BLS scenario. The irrigated area covers only around 700 km²; the auto irrigation option was selected using the irrigated areas from national statistics. Since the irrigated land in the region was small, irrigation management practices were not further considered in the case study.

Table 1. Upper Danube Baseline Scenario information related to the crop area and quantity of fertilizer. Avg. Observed yields are derived from EUROSTAT [44].

Crop Name	CROP ID	n HRU	km ²	% Area	Avg. Mineral (kg/ha)	Avg. Organic (kg/ha)	Avg. Simulated Yield (t/ha)	Avg. Observed Yield (t/ha)
Generic Agricultural	AGRR	31	8884	17.3	173.3	115.5	6.2	9.1
Fruits	APPL	6	62	0.1	30.5	7.2	34.1	41.0
Barley	BARL	27	6748	13.2	87.8	27.8	5.0	4.8
Pasture	CLVS	27	6715	13.1	40.7	66.7	3.5	NA
Maize grain	CORN	21	3906	7.6	132.2	126.9	6.9	9.1
Carrot, vegetables	CRRT	7	450	0.9	103.1	4.0	4.6	NA
Silage	CSIL	18	3969	7.7	83.9	321.0	24.2	45.0
Green bean	GRBN	6	584	1.1	1.4	4.1	3.1	2.8
Oats	OATS	11	845	1.6	84.0	39.1	4.0	5.8
Potatoes	POTA	11	1008	2.0	121.1	44.7	26.5	30.0
Rape seed	RAPE	20	1839	3.6	126.7	34.3	2.2	2.7
Rye	RYE	11	835	1.6	60.0	42.2	3.2	3.8
Sugar beat	SGBT	13	982	1.9	143.7	102.5	48.0	64.0
Sorghum	SGHY	18	3058	6.0	24.6	101.6	5.9	5.4
Soybean	SOYB	1	43	0.1	0.0	26.8	0.6	2.4
Sunflower seed	SUNF	6	398	0.8	80.3	24.4	2.9	2.6
Soft wheat	SWHE	11	1135	2.2	132.4	60.2	3.7	5.4
Spring wheat	SWHT	42	9533	18.6	123.9	32.4	4.2	5.7
Grape	TWIN	4	230	0.4	4.2	1.7	6.5	6.4
Total		291	51,224	100	55%	45%		

Note: SWAT values agronomic approach.

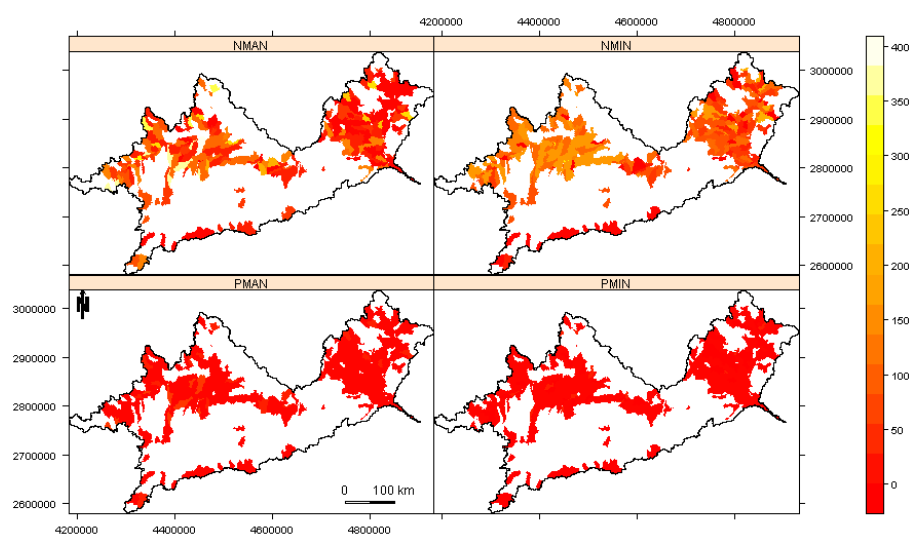


Figure 2. Map of applied fertilizations in SWAT (kg/ha). NMAN and PMAN: Nitrogen and Phosphorus in manure fertilizer, respectively; and NMIN and PMIN: nitrogen and phosphorus in mineral fertilizer, respectively.

The model was calibrated in steps: calibration of crop yields, multi-site calibration of streamflow, and calibration of N-NO₃ at the outlet of the watershed. Annual simulated crop yields for 1995–2009 were calibrated by manually adjusting three parameters (the crop harvest index, HVSTI, and the optimal and minimum plant growth, T_OPT and T_BASE, respectively) to match yields reported by EUROSTAT [44] (Table 1). SWAT crop yields were generally well captured, albeit some differences were noticeable for generic agricultural crop, corn, corn silage, and soybean, probably due to very productive crop varieties cultivated in the Basin. However, given that sensitive crop management inputs [49] such as planting and harvesting time, fertilizer and irrigation water inputs were generalized for application in the large Basin rather than be locally defined, calibration of crop yields was considered satisfactory.

Monthly streamflow was calibrated in 98 gauged stations for the period 1995–2006, and validated in 150 gauged stations for the period 1995–2009. With reference to the calibrated dataset, streamflow simulation at more than 50% of stations had an average percent bias (PBIAS%, [50]) of 11% and Nash Sutcliffe efficiency (NSE, [50]) of 0.57. For the validation dataset, the PBIAS% was satisfactory for more than 60% of gauged stations (average values of 9.7%) and for these the average Nash Sutcliffe was around 0.53. More details about the model setup and the calibration procedure can be found in Malagó et al. [45]. Mean monthly N-NO₃ concentration was calibrated manually at the only station for which data was available at the time of the study, i.e., at the watershed outlet for the period 1995–2009, by changing two basin parameters: the denitrification exponential rate coefficient (CDN) was set at 0.6 and the fraction of field capacity water content above which denitrification occurs (SDNCO) was set to 1. After calibration, SWAT N-NO₃ mean concentration at the outlet (2.15 mg/L) was very close to the observation mean (2 mg/L); PBIAS% of monthly N-NO₃ simulation at the outlet was 6.8%. The calibration was validated in other 74 gauging stations in the region that became available at a later stage. SWAT simulated well the monthly N-NO₃ concentrations with performances from very good to satisfactory (PBIAS% < ±70% [50]) in about 57% of them. Figure 3 shows SWAT simulation and observations of N-NO₃ concentration at some key stations of the Basin.

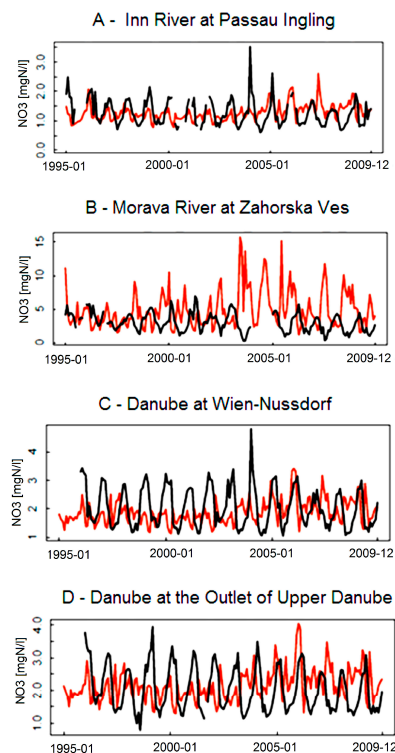


Figure 3. Visual appraisal of N-NO₃ (mg/L) as observed (black line) and as simulated by SWAT model (red line) for the period 1995–2009 at the Inn River (A); Morava (B); Danube at Wien Nussdorf (C) and at the Outlet of Upper Danube (D). The location of these stations are reported in Figure 1.

3.2. Best Management Practices

Two groups of Nitrate Best Management Practices were considered in the work: PS and NPS BMPs. Improved sewage treatment can substantially reduce PS pollution. Primary treatment removes only bulky materials. The more expensive secondary (C-plants) treatment also removes suspended particles and part of the nutrient-rich organic material. The even more expensive tertiary treatment, for instance CN (C-removal + nitrification), CND (C-removal + nitrification + denitrification), or CNDP (C-removal + nitrification + denitrification + Phosphorus removal), which is sporadically implemented, also removes most of the dissolved nutrients. In the Upper Danube Basin, 533 urban and industrial PS were considered, which were modeled as C-plants Waste Water Treatment Plants (WWTP) [51]. The WWTP capacity of treatment varied from 9 m³/day to 604,500 m³/day, with an average of 8306 m³/day. In this work we considered two possible levels of upgrading WWTP treatment, which achieved removal of a higher percentage of nutrients at higher costs (Table 2).

Table 2. Cost and nutrients reduction efficiency for each type of WWTP upgrading and the flow.

Upgrade Treatment	Coef ₁	Coef ₂	Cost (€/m ³)	Nutrient Removal Efficiency (%)		
				NH ₄	NO ₃	PO ₃
No Upgrade (C-plant)	0	0	0	0	0	0
C to CN	0.1115	−0.126	0.1115Q ^{−0.126}	20	20	0
C to CNDP	0.1464	−0.119	0.1464Q ^{−0.119}	55	55	55

Note: Source: Dvorak et al. (2008) [51] Q: capacity of WWTP in m³/day.

For NPS, we considered BMPs related to mineral fertilization (Table 1). Nitrogen from mineral fertilizer is the major source of N input in EU countries and remains an important cost for the farmers. Mineral fertilization could substantially vary among HRUs, and affected the nutrient losses on one side and the yield crop on the other. It is true that Nitrogen input from manure remains important in regions of high livestock density [52]. However, since the amount of available manure depends on livestock density, a change in manure fertilization would not be realistic without considering changes in livestock systems. Such analysis was out of the scope of this work. Therefore, in this study livestock density and manure fertilization were kept unchanged from the current situation (BLS).

3.3. Environmental Objective

Minimizing pollutant concentration or loads, or alternatively maximizing reduction of pollutant concentration, is a key objective in water pollution control management practices. There is no single way to assess the water quality in a watershed, especially when water quality is related to the concentration of various contaminants over a period of time in many geographical points. As well, there is no ideal mathematical equation to perform the aggregation of temporal and spatial pollutant concentration values in one single metric that resumes the global quality. Hence, the following three different possibilities for aggregating water quality indicators have been included in the framework.

- The average pollutant concentration in all reaches for the whole simulation period.

$$\frac{1}{ns} \frac{1}{nt} \sum_{i=1}^{ns} \sum_{j=1}^{nt} Q_{ij} \quad (1)$$

where:

nt: number of time-steps in the simulation period.

ns: number of modeled reaches.

Q_{ij}: concentration (mg/L) of pollutant in reach “*i*” and simulation time-step “*j*”.

- The cumulated contaminant: sum of contaminant concentrations in reaches that exceeded an environmentally acceptable threshold.

$$\sum_{i=1}^{ns} \sum_{j=1}^{nt} (Q_{ij}) \quad \forall i, j \mid Q_{ij} > Th \quad (2)$$

where Th : threshold that is considered as environmentally acceptable. This can be set according to Water Framework Directive (WFD, [5]) targets or ecological considerations; and the other variables are defined as in Equation (1).

- The total load at the watershed outlet:

$$\frac{1}{nt} \sum_{j=1}^{nt} TL_j \quad (3)$$

where TL_j : load of the pollutant exported at the watershed outlet in the simulation period " j ".

3.4. Economic Objective

PS and NPS BMPs yield benefits in water quality and wildlife habitats, but their implementation and maintenance come at a cost. On the one hand, agriculture generates economic profit. It is important to consider the impact of BMPs adoption on farmers' revenue. On the other hand, the upgrade of the WWTP is expensive (Table 2). A priori, it is not clear where it is more efficient to invest in. The most efficient solution might well be an adequate spatial combination of different BMPs adoption. The economic objective function was defined as:

$$TNI = g_1(x, y | \theta, I, wc, cr, T) - g_2(z | \theta, I, wc, cr, T) - g_1(BLS) \quad (4)$$

where:

TNI : is the total net income (considering together gross margin of the farmers and cost of the WWTP).

x : denotes decision variables reflecting the quantity and location (HRU) of fertilizer practices.

y : denotes decision variables reflecting the quantity and location (HRU) of irrigation practices.

z : denotes decision variables reflecting the type and location of the WWTP.

g_1 : is the gross margin related with the agricultural production.

g_2 : is the cost related to upgrading the WWTP (additional cost in relation with baseline situation).

T : is the assessment period.

θ : is the vector of calibrated watershed model parameters.

I : represents driving forces (i.e., rainfall, temperature, and other environmental factors).

wc : is the unit cost of the implementation the conservation practice.

cr : is the unit price of beneficial products of the conservation practice.

$g_1(BLS)$: is the base line situation gross margin related with the agricultural production.

For the BLS, the WWTP cost (the g_2 component) was set to zero. In the following paragraphs, the evaluations of the two economic components related to agriculture and to the WWTPs are described.

3.4.1. Component Related to Agriculture

In order to estimate farmer gross margin as affected by the different management strategies, we applied a function based on crop yield, crop price, fertilizer cost, irrigation water cost, standard operational cost, and specific fixed cost (including seeds cost, tillage operations, machinery, grain drying, labor, etc.). For each alternative BMP, total gross margin was estimated as:

$$g_1^{mp} = \sum_{i=1}^{HRU} \sum_{j=1}^{crop} \left(Y_{ij}^{mp} * A_{ij} * Up_j - Fc_{ij}^{mp} * Qf_{ij}^{mp} - Qw_{ij}^{mp} * Wc - Oc_j \right) \quad (5)$$

where:

g_1^{mp} : agricultural total gross margin for the BMP.

Y_{ij}^{mp} : yield of crop j in HRU i under a BMP.

A_{ij} : area (ha) of crop j in HRU i .

Up_j : unit price (income €/tm) of crop j (Table 3).

Qf_{ij}^{mp} : quantity of fertilizer applied (kg/ha) to crop j in HRU i under a BMP.

Fc_{ij}^{mp} : unit cost of fertilizer (€/kg) of crop j in HRU i under a BMP.

Wc : the water irrigation unit cost (€/mm), constant across HRUs.

Qw_{ij}^{mp} : irrigation quantity (mm/ha) for crop j in HRU i under a BMP.

Oc_j : operational management cost for the crop j (Table 3).

Crop management costs were assumed constant throughout the simulated period and independent from the annual yield. The average crop yield for the period 1995–2009 of each HRU under management scenarios was assessed with SWAT. Table 3 includes the average, minimum and maximum selling price for all crops [44] in the study region, and the operational (fixed) costs, including the labor, machinery. Instead, current European subsidies were not considered in farmers' income.

Table 3. Upper Danube Crop selling prices, management costs and mean annual simulated crop yields in the period 1995–2009 (dry weight, t/ha). The fixed cost included: total cost of machinery, labor and seed.

Crop Name	CROP ID	Avg. Sell. Price. (€/tons) *	Min. Sell. Price (€/tons) *	Max. Sell Price (€/tons)*	Fixed Cost (€/ha) *
Generic agricultural	AGRR	132	88	213	400
Fruits	APPL	381	257	535	5000
Barley	BARL	136	93	206	220
Pasture	CLVS	50			100
Maize grain	CORN	132	89	221	850
Carrot, vegetables	CRRT	254	117	431	4000
Silage	CSIL	132	89	221	850
Green bean	GRBN	847	495	1190	4000
Oats	OATS	109	70	167	400
Potatoes	POTA	136	70	256	1000
Rape seed	RAPE	269	146	461	220
Rye	RYE	124	67	199	220
Sugar beat	SGBT	38	263	506	1700
Sorghum	SGHY	107	67	188	400
Soybean	SOYB	265	181	467	600
Sunflower seed	SUNF	241	149	396	220
Soft wheat	SWHE	128	82	211	370
Spring wheat	SWHT	128	82	211	370
Grape	TWIN	404	254	698	4000

Note: * Source: Eurostat statistics [44] (Eurostat 2015).

N, P and K are applied with several fertilizer products (Anhydrous ammonia, Nitrogen solutions 30%, Urea 44–46, Ammonium nitrate, Sulfate of ammonium, super phosphate 20%, etc.) containing different forms and percentages of the elements. The total cost of the fertilization was estimated based on the quantity (kg) of elementary N, P and K present in the applied fertilizers. The cost per kg of N, P and K was estimated from annual data from 2000 to 2013 [53]. The resulting prices were 1.21 € per kg of Nitrogen, 2.8 € per kg of Phosphorus and 0.97 € per kg of Potassium and the summary cost per fertilizer is showed in Table 4.

Table 4. Fertilizer prices used for Upper Danube derived from USDA statistics.

Fert. Name	Mineral		Organic		Cost (€/kg)
	N (%)	P (%)	N (%)	P (%)	
Elem-N	1	0	0	0	1.21
Elem-P	0	1	0	0	2.8
31-13-00	0.31	0.057	0	0	0.5347
30-15-00	0.3	0.066	0	0	0.5478
28-10-10	0.28	0.044	0	0	0.462
28-03-00	0.28	0.013	0	0	0.3752
25-05-00	0.25	0.022	0	0	0.3641
25-03-00	0.25	0.013	0	0	0.3389
24-06-00	0.24	0.026	0	0	0.3632
22-14-00	0.22	0.062	0	0	0.4398
18-04-00	0.18	0.018	0	0	0.2682
10-28-2000	0.1	0.123	0	0	0.4654
10-20-2020	0.1	0.088	0	0	0.3674
7-7-2000	0.07	0.031	0	0	0.1715
DAIRY-FR	0.007	0.005	0.031	0.003	0

Note: Source: USDA statistics [53] (USDA 2015).

3.4.2. Component Related to WWTP

Two upgrading options were considered (Table 2): (i) upgrading from C-plants to CN plants (C-removal + nitrification) or (ii) upgrading to CNDP plans (C-removal + nitrification + denitrification + Phosphorus removal). Cost estimates for different upgrading options in municipal wastewater treatment plants for all Danube countries were derived from Dworak et al. [51], using the cost data reported for Austria. The total wastewater treatment cost includes all investment costs (costs of construction and costs of the mechanical and electrical equipment) as well as all operational costs (labor costs, energy expenses, maintenance costs, chemicals expenses, sludge treatment and disposal costs, and discharge levies). To make investment and operational costs comparable, all investment costs were converted into annual values using a 20-year depreciation horizon and a 5% real interest rate. These costs were available for different sizes of the WWTP, varying from 75 to 150,000 population equivalent. We fitted a power equation to express the cost of the upgrade as a function of the volume of water treated (Table 2). As a result, the total cost for a WWTP is expressed in €/m³ per year.

For each WWTP scenario the total wastewater treatment cost in the basin was estimated as the sum of the treatment cost for each plant, which was based on the treatment type and the volume of water according to:

$$g_2^{mp} = \sum_{k=1}^{WWTP} \left(365 * Q_k * Coef_1[Y_k] * Q_k^{Coef_2[Y_k]} \right) \quad (6)$$

g_2^{mp} : WWTP upgrading annual cost for the mp water restoration management practices.

Q_k : flow average (m³/day) in PS k .

Y_k : type of upgrade of the k WWTP. 0: no upgrade; 1: upgrade from C to CN; upgrade from C to CNDP.

$Coef_1[Y_k]$: coefficient 1 for the Y_k WWTP type of upgrade (Table 2).

$Coef_2[Y_k]$: coefficient 2 for the Y_k WWTP type of upgrade (Table 2).

3.5. Multi-Objective Optimization Method

A logical approach for targeting PS and NPS pollution control practices should be to propose a multi-objective problem following the next equation:

$$\begin{cases} \text{minimize Pollutant concentration and/or load (s)} \\ \text{maximize Global benefit (s)} \end{cases} \quad (7)$$

Under this or other similar approaches, the objective functions are often conflicting and incommensurable. For example, implementation of a large number of conservation practices would likely result in lower pollutant loads, but the cost for implementation and maintenance of these practices would increase. Hence, the optimal solutions for any objective could substantially differ from the optimal solutions for another objective. Multi-objective optimization approaches can determine a set of non-dominated solutions belonging to a Pareto-optimal front. Non-dominated solutions are a set of solutions in the search space that are better than any other solution in one or more objective [54]. Any improvement in one objective among Pareto-optimal solutions will essentially result in the degradation of at least another objective [55].

Since the shape of the objective function cannot be assumed as smooth or differentiable in our management practices application problem, gradient approaches such as quasi-Newton methods cannot be applied [56]. Instead, gradient free methods such as evolutionary algorithms are applicable as optimization method. The non-dominated sorting genetic algorithm NSGA-II [57] is among the most commonly used multi-objective global optimization methods with numerous successful applications in watershed management [24,58,59]. The procedure starts with an initial population of solutions that are typically generated randomly. The fitness of individual solution in successive generations increases through selection, crossover, and mutation. The procedure stops when a set of predefined termination conditions is met. To run a multi-objective optimization process in the R-SWAT-DM framework, the user should select at least two objectives. Usually at least one refers to the environmental objective, e.g., selecting a constituent of interest and the aggregation metric to be applied (Equations (1)–(3)). For the economic objective, the user could choose to maximize the total net income, or to minimize the investment in WWTP, or to maximize the gross margin for the farmers.

For the Upper Danube Basin, two objectives were considered. The environmental objective focused on N-NO₃ contamination, because it is the most important issue in the region [60]. The aggregation metric was the sum of NO₃ concentration exceeding the WFD threshold of 50 mg/L in all reaches (Equation (2)). However, the total N-NO₃ load at the watershed outlet (Equation (3)) is a key indicator of water quality [33], thus optimization was constrained to not exceed BSL level. The economic objective was the total net income as defined in Equation (4).

The multi-objective optimization module simulates individuals of a population as chromosomes (scenarios), which in turn contain genes, i.e., the single units for which conservation can be applied, as their building blocks. Each gene represents a particular set of BMPs (BMP combination) on the chromosome encoding a specific trait. In the Upper Danube Basin, the unit for controlling diffuse pollution was the single HRU. There were 291 fertilized HRU, while we neglected the irrigation option. For point source pollution, the unit was the single WWTP. Therefore, chromosomes for the Upper Danube Basin consisted of 291 HRU + 533 WWTP genes (Figure 4).

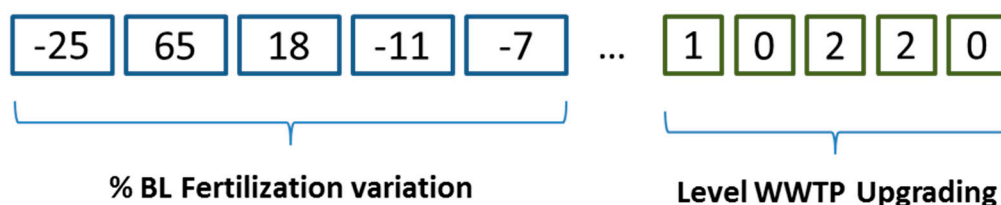


Figure 4. Schematic of the decision variables (chromosome) representing the conservation practices.

The NSGA-II results are very sensitive to the operational parameters (population size, number of generations, crossover, and mutation rates) that define the search algorithm. As described in Maringanti et al. [23], a nonlinear sensitivity analysis where operational parameters were incremented one at a time was conducted to define the NSGA-II best population size, number of generations, mutations, and crossover probabilities.

4. Results and Discussion

The Baseline Scenario (BLS) shows the current state of the Upper Danube basin according to the model of SWAT. The simplest analysis that can be performed with the R-SWAT-DM framework is to simulate one single spatially explicit conservation strategy, in order to know its economic and environmental outcomes. Table 5 shows a short description of the management strategies analyzed in this paper.

Table 5. Short description of the management strategies analyzed.

Strategy	Short Description
BLS	Baseline Scenario
SmartFert	Best Iterative fertilization (35% of fertilization reduction)
SmartWWTP	Upgrading all WWTPs to CNDP
SmartG	Combination of SmartFert and SmartWWTP strategies
OptiWWTP1	Selected solution from the Pareto of the optimized WWTP execution
OptiWWTP2	Selected solution from the Pareto (green point in Figure 5)
OptiFert	Selected solution from the Pareto of the optimized fertilization execution
OptiG	Optimized simultaneously WWTP and fertilization management
CombinOpti1	Combination of OptiWWTP1 and OptiFert
CombinOpti2	Combination of OptiWWTP1 and OptiFert

Next, results were obtained running the tool to simulate iterative changes in the rate of mineral fertilization applied uniformly in all HRUs (black dots in Figure 5). The iterative simulations showed that when starting from a very low rate of mineral fertilizer applied (for all HRUs), a fertilization increase causes low pollution increase while the total net income increases sensibly as crop yields increase more than fertilizer costs. It is possible to identify an optimal fertilization rate (SmartFert point in Figure 5) corresponding to the maximum total net income. Once this fertilization rate is exceeded, total net income starts to decrease, while pollution continues to increase. Compared to the BLS, the SmartFert strategy corresponds to a reduction of 35% in mineral fertilizer rate applied, and results in an increment of total net income of 75 M€ and in a 30% reduction of cumulated N-NO₃ pollution (Table 6). SmartFert results are in line with the outcomes of the analysis of statistics and agri-environmental indicators available for the four involved Countries from Eurostat [61]. These indicators point out a systematic potential surplus of Nitrogen on agricultural land: a surplus of 90, 86, 33, and 30 kg/ha/year is reported for year 2008, respectively, for Germany, Czech Republic, Austria and Slovakia that correspond to 42%, 50%, 25% and 28% of total Nitrogen inputs. Surplus numbers are clearly in line with the suggested reduction rates identified in the SmartFert scenario.

Iterative simulations of WWTP consists of upgrading all WWTP by one (to CN; WWTP => 1), or two levels (to CNDP, WWTP => 2; Figure 5). The total cost of upgrading all plants at CN level is 50 M€, and to CNDP level is of 71 M€ (SmartWWTP), achieving approximately pollution reductions of 10% and 26%.

The analysis can be done starting from the BLS situation (blue triangles) or from the SmartFert strategy (red squares). Remarkably, the conservation strategy that applies all PS and NPS restoration measures (SmartG, in Figure 5) may reduce the Nitrogen pollution by nearly 52% with no additional cost, since the increase of agricultural benefits compensates for the cost of upgrading the WWTP (Table 6).

However, management outcomes could be substantially improved by applying the multi-objective optimization capabilities of the framework. Focusing only on point source pollution, a first optimization process was run for WWTPs upgrading decision process while keeping fertilization at BLS conditions. In this case, each management strategy was coded as a chromosome of length 553 (one per WWTP). Each WWTP had three possible options: 0 (no upgrade), 1 (upgrade to level CN), or 2 (upgrade to level CNDP). The population size was 60, a crossover probability of 0.9, and a mutation probability

of 0.1. The optimization process was stopped after 60 generations (3600 evaluations of the model), when the improvement from one generation to the next was negligible (convergence criteria).

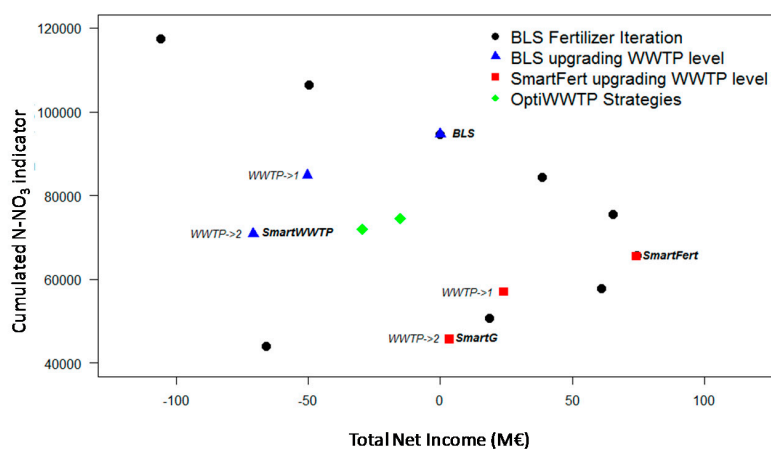


Figure 5. Comparison between economic (total net income, Equation (4)) and environmental objective (N-NO₃ indicator based on Equation (2)) for iterative simulations. Black dots indicate the strategy of varying the fertilization rate by the same amount in all HRUs. Blue triangles show the strategy of upgrading all WWTPs for the BLS. Red squares show the same strategies applied to the best fertilization strategy (SmartFert). Note that both BLS and SmartFert points are at current WWTP status; WWTP => 1: all the plants are upgraded to CN level; WWTP => 2: all plants are upgraded to CNDP level.

Table 6. Environmental and economic indicator for some of the catchment management strategies tested in the Upper Danube case study.

Strategy	Environmental Indicators						Total Gross Margin	WWTP Cost	Total Income	Total Net Income
	Cumulated NO ₃									
	Reach > 50 mgN/L									
	Equation (1)		Equation (2)		Equation (3)					
	(1)	(2)	(3)	(mgN/L)		(M)	(M€)	(M€)	(M€)	(M€)
BLS	1060	78	161	23.98	94,671	120	1822.2	0.0	1822.2	0.0
SmartFert	747	51	132	21.23	65,618	111	1896.6	0.0	1896.6	75.4
SmartWWTP	809	61	133	20.79	70,804	103	1822.2	70.8	1751.4	−70.8
SmartG	549	37	102	18.01	45,657	94	1896.5	70.8	1825.7	3.5
OptiWWTP1	821	63	137	21.97	71,899	113	1822.2	29.5	1792.7	−29.5
OptiWWTP2	839	63	142	22.35	74,472	116	1822.2	15.2	1807.0	−15.2
OptiFert	381	24	83	17.50	32,883	103	1926.2	0.0	1926.2	104.0
OptiG	244	12	68	15.71	17,908	91	1962.8	48.2	1914.6	92.4
CombinOpti1	242	13	63	16.15	17,872	95	1926.2	29.5	1896.7	74.5
CombinOpti2	243	13	63	16.53	19,322	99	1926.2	15.2	1911.0	88.8

Notes: Environmental indicators related to reaches: for all reaches during the 15 year simulation period: (1) is the number of instances (month-reach cases) when N-NO₃ reach month concentration exceeds the threshold of 50 mg/L; (2) is number of reaches where N-NO₃ month average concentration for the simulation period exceeds the threshold; and (3) is number of reaches where N-NO₃ month maximum concentration exceeds the threshold. Environmental indicator related to concentration: Equation (1): Average N-NO₃ concentration for the simulation period and all reaches (Equation (1)); Equation (2): Sum of N-NO₃ concentration in the reaches that exceed the 50 mg/L threshold (Equation (2)); Equation (3): Total N-NO₃ load at the watershed outlet (Equation (3)); Total Gross Margin is defined in Equation (5); Total Income = Total Gross Margin – WWTP Cost; Total Net Income is defined in Equation (4).

Figure 6 shows the WWTPs upgrade Pareto strategies, according to the objectives of minimizing implementation cost and minimizing cumulated N-NO₃ pollution. The OptiWWTP1 strategy (which cost 29.5 M€) could achieve a pollution reduction very similar to upgrading all WWTPs to CNDP level (SmartWWTP, which would costs 71 M€). Moreover, investing only 15.2 M€ (OptiWWTP2 strategy) could achieve a pollution reduction of 21.5%, which is not so far to the 26% reduction achievable by upgrading all WWTPs to CNDP level (SmartWWTP; Figures 5 and 6; Table 6). Both OptiWWTP1 and OptiWWTP2 strategies offer a good compromise between economic and environmental objectives. In the OptiWWTP1, 77 plants should be upgraded to CN and 180 to CNDP;

in OptiWWTP2 64 plants should be upgraded to CN and 102 to CNDP. No change would occur for the remaining WWTPs.

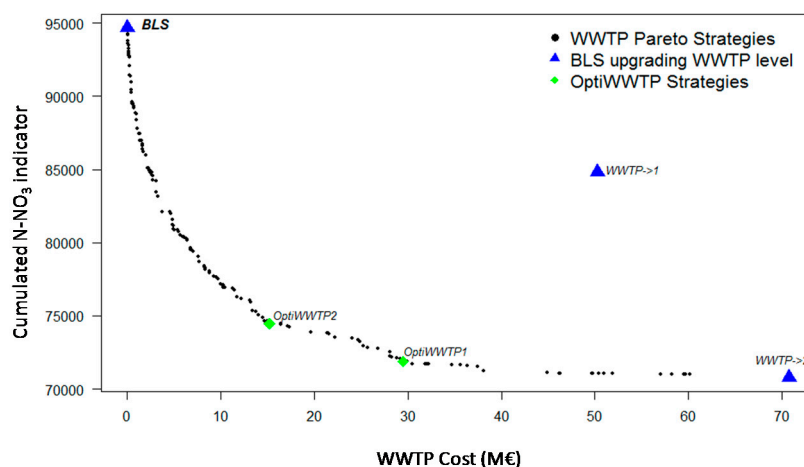


Figure 6. Pareto front of the WWTP optimal upgrade, considering the objectives of minimizing cost and minimizing N-NO₃ concentration, confronted with the all WWTP upgrading strategies to level 1 or 2.

The multi-objective optimization can also be carried out for mineral fertilization while maintaining WWTPs at the BLS status. In this case the variables considered were the HRU mineral fertilization rates, so the length of the chromosome was 291 (one variable per fertilized HRU). The fertilization rate variables were continuous, ranging from 0 kg/ha to a maximum equal to the double of the HRU mineral fertilizer applied in the BLS scenario. The population size was 50, the maximum number of evaluations 3000 (60 generations), crossover probability 0.9, and mutation probability of 0.1.

The optimization process found fertilization management strategies that were more efficient than the SmartFert strategy for both reducing pollution and increasing the total net income. Figure 7 shows the trade-off strategies (green “+”). The Pareto front is slightly sloped, which indicates that it is possible (up to a limit) to improve profitability without significantly increasing pollution if adequate local fertilization rates are applied across the region. Among many, we selected one strategy from the Pareto set, labeled OptiFert in Figure 7 and Table 6. This fertilization strategy provides a total net income increase of 100 M€ and a 65% reduction in the N-NO₃ pollution compared to BLS. Compared to SmartFert scenario, it afforded a 50% reduction of pollution.

Finally, a multi-objective optimization run was also performed considering simultaneously all decision variables. In this case, the chromosome length was 824 (291 fertilizations + 533 WWTP). The optimization process was performed with a population size of 80 chromosomes during 50 generations (4000 evaluations), crossover was 0.9, and mutation 0.1. The trade-off strategies (Pareto front) of this run are also shown in Figure 7 (gray “x”). Significant improvements in the total net income with little increase in the N-NO₃ metric were further identified. Among this last Pareto set, we selected one strategy, labeled as OptiG. This strategy could achieve N-NO₃ reductions of 81% of BLS and 61% of SmartG strategies, with a total net income of 92 M€ higher than the BLS (Table 6 and Figure 7).

Two additional strategies were generated by combining the OptiWWTP1 and OptiWWTP2 with the OptiFert strategy selected from the fertilization only Pareto set (Figure 7). We labeled these as CombinOpti1 and CombinOpti2 in Table 6 (blue points in Figure 7). Both strategies yield similar results than OptiG strategy. However, management practices applied in the CombinOpti strategies and in the OptiG are considerably different, especially in terms of WWTP management. In CombinOpti2 102 plants should be upgraded to CNDP level, whereas in OptiG 362 should be upgraded to CNDP level. The implementation cost would raise from 15.2 M€ in CombinOpti2 to 48 M€ in OptiG. However, this higher purification investment in OptiG would be offset by the higher crop revenue achieved by slightly increasing fertilization (and N-NO₃ pollution generated by agriculture).

Similarly, the CombinOpti2 and OptiG strategies are very close in terms of objectives (Figure 7), but are very different in terms of type and spatial distribution of BMPs that are identified. Hence, the global optimum finds synergies between all types of management alternatives; this example shows the advantage of combining considerations for PS and NPS management at once.

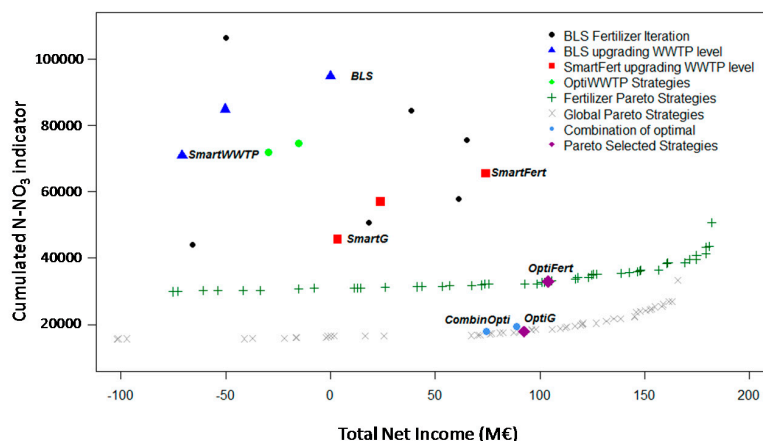


Figure 7. Pareto front strategies for the multi-objective fertilization rate (291 HRU) problem (green+), and the Pareto front strategies for the multi-objective fertilization and WWTP (291 HRU + 533 PS; gray x). Both multi-objective processes have been considered as objective, the minimization of Total Net Income and of the cumulated NO_3 metric (Equation (2) metric). For easy of comparison, strategies found in the analysis of Figure 5 are also reported.

SmartFert and SmartWWTP strategies, respectively, reduce fertilizer use or upgrade WWTPs without considering differences in current pollutant concentration status across the reaches. They are quite efficient in decreasing the average N-NO_3 concentration by almost 6 mg/L (see column labeled “Equation (1)” in Table 6). They would also reduce the number of reaches with average N-NO_3 concentration exceeding the 50 mg/L by 50% (Table 6). However, these strategies do not provide total net income and do not reduce the high average N-NO_3 concentrations in the remaining 50% of polluted reaches (Table 6, Figures 8 and 9).

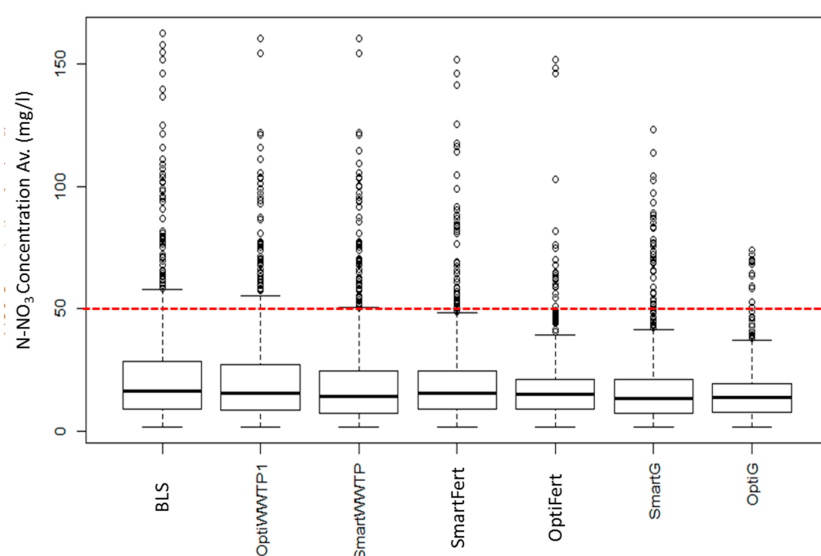


Figure 8. Boxplot of reach mean N-NO_3 concentration (mg/L) in the Upper Danube Basin under alternative management strategies.

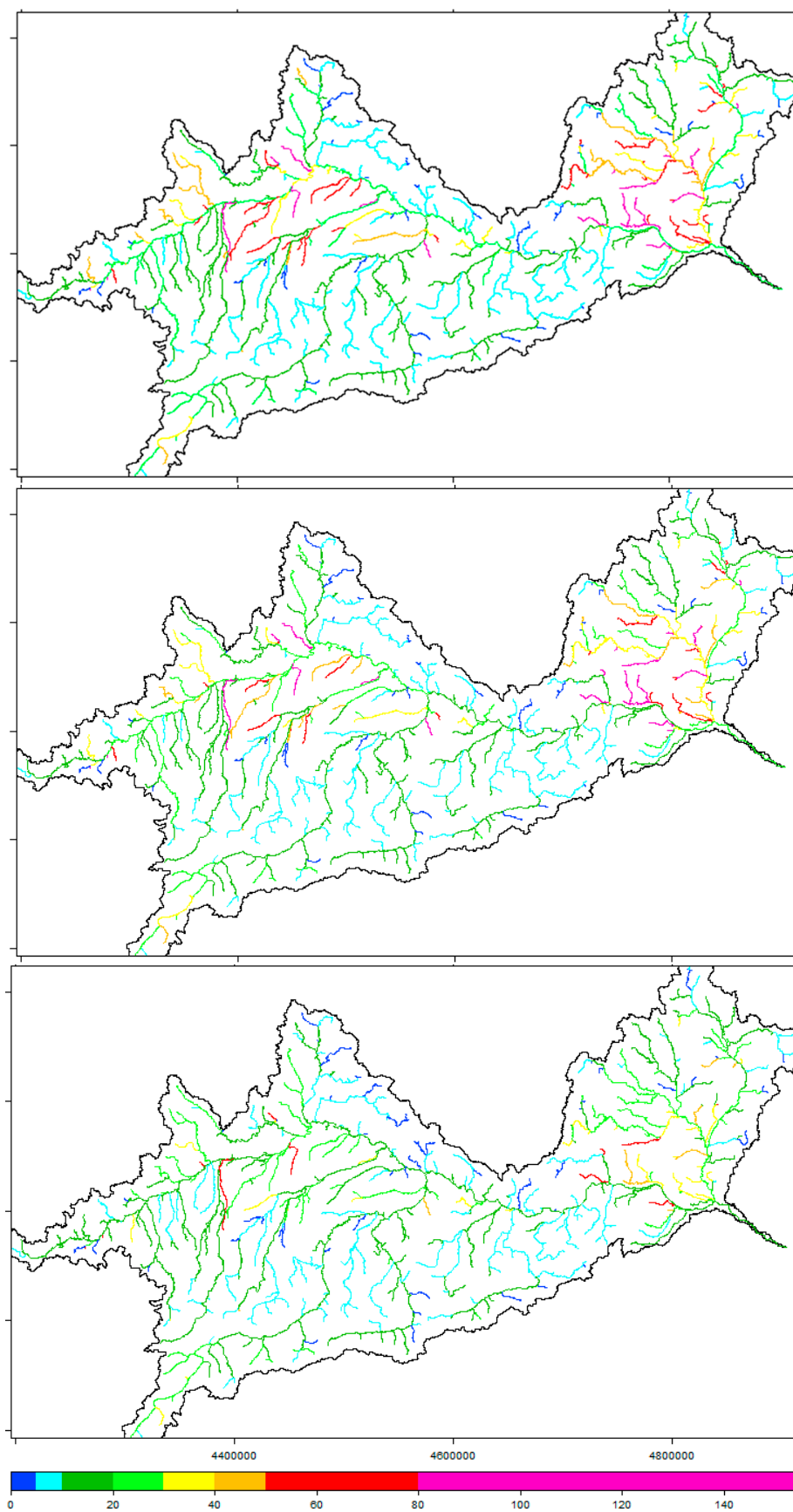


Figure 9. Reach average monthly N-NO₃ concentration (mgN/L) for 15-year simulation period in the Upper Danube Basin under three catchment management strategies: **(top)** BLS; **(middle)** SmartFert; and **(bottom)** OptiG.

Conversely, management strategies found by applying the optimization routine (such as OptiG) do consider the location where management is applied. The spatial distribution of monthly average N-NO₃ concentration in the reaches of the Upper Danube Basin is shown in Figure 9 for three different management strategies: BLS, SmarFert and OptiG. Where average N-NO₃ pollution is low (i.e., below the WFD threshold of 50 mg/L) in the BLS, there are no significant differences between the three strategies. Conversely, in the reaches where N-NO₃ concentration threshold (50 mg/L) is exceeded, the improvements are important, especially in the OptiG. The number of reaches where on average the threshold is violated is reduced from 78 to 12. OptiG is the only strategy that could reduce the average N-NO₃ concentration of all polluted reaches to less than 70 mg/L (Table 6 column labeled as (2), Figure 8).

Table 6 shows the value of several environmental and economic indicators for each of the strategies described above, in which only two objectives have been considered simultaneously: minimizing the cumulated N-NO₃ metric (Equation (2)) and maximizing the total net income. In a comprehensive decision-making process, the framework could be applied considering simultaneously more than two objectives, for example to account for other pollutants (like PO₃, NH₄, or sediments) or other metrics (Equations (1) and (3); or other economic valuation). In these cases, the analysis would be enlarged to a higher number of dimensions (the Pareto set will be a surface instead of one curve).

Biophysical and economic model results are subject to uncertainties. A correct calibration of the biophysical model and a correct estimate of biophysical and economic parameters are essential to minimize the influence of the uncertainties on the decision making process. Simulations and optimizations performed with R-SWAT-DM allow better understanding of the behavior of the model under different situations.

In addition, the framework allows simple parameter sensitivity analyses to assess which parameters impact the process under study. Figures 10 and 11 show two parameter sensitivity analyses performed by means of the iterative simulation option. Figure 10 shows the effect of variation in the fertilizer price and Figure 11 shows the effect of the harvest index coefficient (a SWAT crop parameter that defines the fraction of the total crop biomass removed with the harvest operation) on the final results. As it can be seen, changes in the fertilizer price result in changes of the response curve shape (Figure 10), whereas changes in the harvest index coefficient shifts the Pareto fronts to the right or to the left (i.e., the income estimation is sensitive to these parameters) but do not change curve shape (Figure 11). In both cases, however, the strategy benefits in terms of N-NO₃ pollution remain similar.

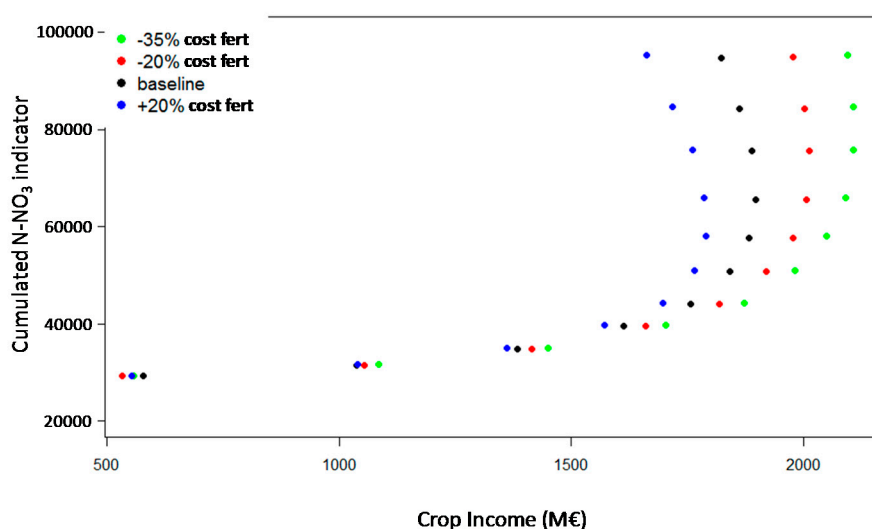


Figure 10. Sensitivity analysis for the fertilizer prices.

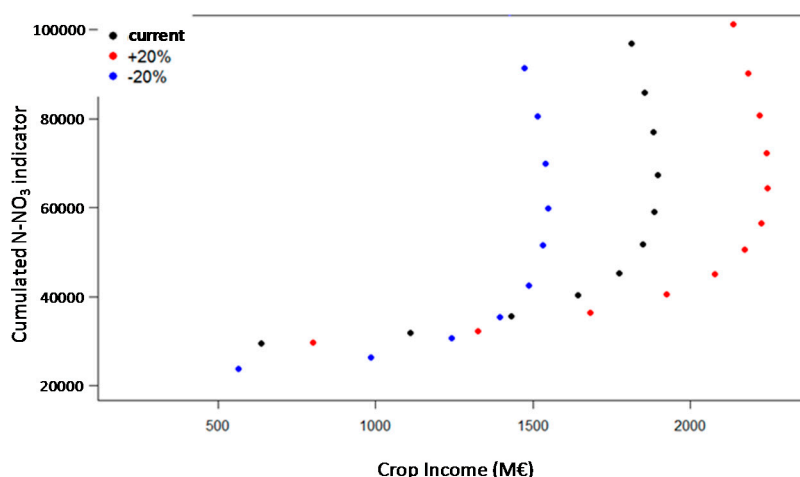


Figure 11. Sensitivity analysis for the harvest index coefficient.

5. Summary and Conclusions

Although in recent years the Water Framework Directive and the Nitrates Directive have succeeded in achieving some improvement in the nutrient status of many European water bodies, aquatic ecosystems in Europe are still at risk of eutrophication from excessive Nitrogen availability. These risks can be significantly reduced by applying selected BMP efficiently.

An integral simulation-optimization framework (R-SWAT-DM) for optimal allocation of PS and NPS conservation practices was applied to the Upper Danube Basin. The framework uses the spatially distributed watershed model SWAT to assess nonpoint and point source pollution and crop yields under current conditions (baseline) as well as under alternative management scenarios. Management strategies included crop fertilization plans to reduce diffuse pollution and wastewater treatment plant technology upgrading to reduce PS pollution. The economic module allows evaluating the economic benefit or cost associated to each management strategy, accounting for farmers' gross margins and WWTP upgrading investment cost.

For this application in the Upper Danube Basin, we focused on one environmental objective (i.e., minimizing average monthly N-NO₃ concentration exceeding a 50 mg/L threshold) and on one synthetic economic objective (i.e., maximizing the total net income). Efficient strategies that could significantly improve current water quality status were found. Our analysis suggests that a proper management of mineral fertilization can lead to important environmental benefit without affecting farmer economic income. Reducing the mineral fertilization rate by around 35% will allow obtaining a 30% reduction of N-NO₃ concentration in the most polluted river reaches, while concurrently increasing the total net income by 75 M€. These results are in line with the outcomes of the EUROSTAT analysis of statistics and agri-environmental indicators of the four Upper Danube Basin main Countries. In this region the high input of organic Nitrogen from manure allows indeed to reduce mineral inputs with limited negative effect on crop yields (assuming a correct management of manure is put in place). In this context, for many crops additional mineral fertilizer inputs would result in slight increases of yields that would not be sufficient to repay the extra fertilization cost or the extra environmental pollution. Over-fertilization is a well-known issue in the Upper Danube, and more generally in all of the Danube River Basin [62]. The fact that farmers may reduce N use and increase their profit is puzzling: a rational farmer should have decided to reduce N use. One explanation could be the lack of information of farmers with respect to best management practices. It could be that local extension services focus more on increasing crop yields than on giving advices to farmers on how to apply N in an efficient way. One policy recommendation could be then to write and disseminate guidelines on best management practices to farmers. Another policy option could then be to propose farmers some insurance mechanisms to secure their crop yield against the perceived loss in income due to reduced

fertilization [63] or to redistribute parts of the gains coming from N reduction strategies to the farmers having voluntarily opted to implement actions in the form of subsidies.

Similar reductions in N-NO₃ pollution (measured with the cumulative N-NO₃ metric) could be achieved by upgrading WWTP treatments. The cost of water quality improvements could be relatively low (15 M€) if associated to a spatially efficient choice of the WWTPs to be upgraded. The necessity to upgrade WWTPs was recommended by the European Court of Auditors [64] as an effective means to abate urban pollution. Since WWTPs are usually owned by municipalities, a massive program of upgrades raises the issue of funding these investments. One part of the investment cost could be passed through final users but local governments, sometimes for political reasons, may be reluctant to strongly increase water and wastewater prices. Another solution is then to activate the European Regional Development Fund and the Cohesion Fund which are available to Member States in particular for co-financing investments, in particular on UWWTPs upgrade and modernization. In the Danube River Basin, an analysis on 28 projects revealed that the EU co-funding has represented on average 62.5% of total expenditures with a minimum of 34% and a maximum of 75% [65]. These figures suggest that a significant part of the upgrading cost could be covered through EU co-funding in case a municipality goes for a secondary or a tertiary treatment of waste water.

Our study also found that efficient strategies focused on most polluted reaches, whereas water quality was not much improved where N-NO₃ concentrations were already below the threshold of 50 mg/L: in these reaches the upgrade of upstream WWTPs even if combined with the reduction of mineral fertilization in the contributing HRUs did not bring about significant improvements. On the contrary, in most polluted reaches, where the N-NO₃ concentration exceeds the WFD threshold, significant improvements could be achieved through the combined application of the proposed measures. Thus, by effectively exploiting synergies between PS and NPS best management practices, the number of reaches with excessive N-NO₃ concentrations can be reduced from 78 to 12, even with a positive net income (92 M€). However, in some reaches where N-NO₃ concentration was most problematic, no combination of the selected measures could reduce N-NO₃ pollution to less than the WFD water quality threshold of 50 mg/L. For these reaches, other strategies, such as reduction of livestock density, different crop rotations, land use changes, irrigation practices, should be contemplated in addition to those considered herein.

The formulation of conservation strategies is under the responsibility of transboundary river basin organizations (such as the International Commission for the Protection of the Danube River for Danube River Basin) but these organizations need scientific evidence and tools to measure the impact and effectiveness of proposed plans. The decision support system does not guarantee the implementation of the optimal solutions, but it provides the data, results and scenarios that feed into political negotiations on the development of sustainable strategies. If some strategies are not considered feasible or acceptable further constraints may be added in the tool to identify new optimal solutions.

Acknowledgments: This work has been co-funded by the European Commission's Joint Research Centre (JRC) and the Directorate General Environment (DG ENV). The authors gratefully acknowledge the contributions of Maurizio Zambrano-Bigiarini from the University de La Frontera (Chile) and Rodrigo Rojas from CSIRO (Australia).

Author Contributions: Faycal Bouraoui, Angel Udias and Marco Pastori conceived the R-SWAT-DM tool. Anna Malago, Olga Vigiak and Faycal Bouraoui developed and calibrated the Upper Danube SWAT model. Arnaud Reynaud and Marco Pastori created the economic model. Angel Udias and Marco Pastori developed the R-SWAT-DM framework and performed most of the simulation work. All authors contributed to analyzing the results and writing the paper.

Conflicts of Interest: The authors declare no conflict of interest.

Abbreviations

The following abbreviations are used in this manuscript:

BLS	Base Line Scenario
BMP	Best Management Practices
EC	European Commission
FAO	Food and Agriculture Organization
HRU	Hydrologic Response Unit
JRC	Joint Research Centre
N	Nitrogen
PS	Point Sources
NPS	Non Point Sources (Diffuse Sources)
SWAT	Soil and Water Assessment Tool
WFD	Water Framework Directive
WQM	Water Quantity/Quality Models
WWTP	Waste Water Treatments Plants

References

1. European Environmental Agency (EEA). *Source Apportionment of Nitrogen and Phosphorus Inputs into the Aquatic Environment*; EEA Report No. 7/2005; EEA: Copenhagen, Denmark, 2015; p. 48.
2. Sutton, M.A.; Howard, C.M.; Erisman, J.W.; Billen, G.; Bleeker, A.; Grennfelt, P.; van Grinsven, H.; Grizzetti, B. *The European Nitrogen Assessment*; Cambridge University Press: Cambridge, UK, 2011; p. 612.
3. Bouraoui, F.; Grizzetti, B. Long term change of nutrient concentrations of rivers discharging in European seas. *Sci. Total Environ.* **2011**, *409*, 4899–4916. [[CrossRef](#)] [[PubMed](#)]
4. Grizzetti, B.; Bouraoui, F.; Aloe, A. Changes of nitrogen and phosphorus loads to European seas. *Glob. Chang. Biol.* **2012**, *18*, 769–782. [[CrossRef](#)]
5. European Commission. *Directive 2000/60/EC of the European Parliament and the Council Establishing a Framework for Community Action in the Field of Water Policy (Water Framework Directive)*; OJ L 327 of 22.12.2000; European Commission: Brussels, Belgium, 2000.
6. European Commission. *Directive 91/676/EEC Concerning the Protection of Waters against Pollution Caused by Nitrates from Agricultural Sources (Nitrates Directive)*; OJ (1991) L375/1; European Commission: Brussels, Belgium, 1991.
7. European Commission. *Directive 91/271/EEC Concerning Urban Waste Water Treatment, Urban Waste Water Directive*; OJ (1991) L271/40; European Commission: Brussels, Belgium, 1991.
8. Schröder, J.J.; Scholefield, D.; Cabral, F.; Hofman, G. The effects of nutrient losses from agriculture on ground and surface water quality: The position of science in developing indicators for regulation. *Environ. Sci. Policy* **2004**, *7*, 15–23. [[CrossRef](#)]
9. Zhen, X.; Yu, S.C.; Lin, J. Optimal location and sizing of stormwater basins at watershed scale. *J. Water Resour. Plan. Manag.* **2004**, *130*, 339–347. [[CrossRef](#)]
10. Cherry, K.A.; Shepherd, M.; Withers, P.J.A.; Mooney, S.J. Assessing the effectiveness of actions to mitigate nutrient loss from agriculture: A review of methods. *Sci. Total Environ.* **2008**, *406*, 1–23. [[CrossRef](#)] [[PubMed](#)]
11. Emerson, C.H.; Welty, C.; Traver, R.G. Watershed-scale evaluation of a system of storm water detention basins. *J. Hydrol. Eng.* **2005**, *10*, 237–242. [[CrossRef](#)]
12. Harrell, L.J.; Ranjithan, S.R. Detention pond design and land use planning for watershed management. *J. Water Resour. Plan. Manag.* **2003**, *129*, 98–106. [[CrossRef](#)]
13. Bouraoui, F.; Grizzetti, B. Modelling mitigation options to reduce diffuse nitrogen water pollution from agriculture. *Sci. Total Environ.* **2014**, *468–469*, 1267–1277. [[CrossRef](#)] [[PubMed](#)]
14. Doole, G.J.; Vigiak, O.V.; Pannell, D.J.; Roberts, A.M. Cost-effective strategies to mitigate multiple pollutants in an agricultural catchment in North-Central Victoria, Australia. *Aust. J. Agric. Resour. Econ.* **2013**, *57*, 441–460. [[CrossRef](#)]
15. Srivastava, P.; Robillard, P.D.; Hamlet, J.M.; Day, R.L. Watershed optimization of best management practices using AnnAGNPS and a genetic algorithm. *Water Resour. Res.* **2002**, *3*, WR000365. [[CrossRef](#)]
16. Arabi, M.; Govindaraju, R.S.; Hantush, M.M. Cost-effective allocation of watershed management practices using a genetic algorithm. *Water Resour. Res.* **2006**, *42*, W10429. [[CrossRef](#)]

17. Lautenbach, S.; Volk, M.; Strauch, M.; Whittaker, G.; Seppelt, R. Optimization based trade-off analysis of biodiesel crop production for managing an agricultural catchment. *Environ. Model. Softw.* **2013**, *48*, e112. [CrossRef]
18. Ahmadi, M.; Arabi, M.; Hoag, D.L.; Engel, B.A. A mixed discrete-continuous variable multiobjective genetic algorithm for targeted implementation of nonpoint source pollution control practices. *Water Resour. Res.* **2013**, *49*, 8344–8356. [CrossRef]
19. Rodriguez, H.G.; Popp, J.; Maringanti, C.; Chaubey, I. Selection and placement of best management practices used to reduce water quality degradation in Lincoln Lake watershed. *Water Resour. Res.* **2011**, *47*, W01507. [CrossRef]
20. Goldberg, D.E. *Genetic Algorithms in Search, Optimization and Machine Learning*; Addison-Wesley Pub. Co.: Boston, MA, USA, 1989; p. 372.
21. Chatterjee, A. Watershed Optimization of BMP Implementation Schemes Using Genetic Algorithms. Ph.D. Thesis, Pennsylvania State University, University Park, State College, PA, USA, 1997.
22. Zou, R.; Rivero, N.J.; Liu, Y.; Murphy, R.; Sim, Y. Enhanced nonlinearity interval mapping scheme for high-performance simulation-optimization of watershed-scale BMP placement. *Water Resour. Res.* **2015**, *51*, 1831–1845. [CrossRef]
23. Maringanti, C.; Chaubey, I.; Popp, J. Development of a multiobjective optimization tool for the selection and placement of best management practices for nonpoint source pollution control. *Water Resour. Res.* **2009**, *45*. [CrossRef]
24. Bekele, E.G.; Nicklow, J.W. Multiobjective management of ecosystem services by integrative watershed modeling and evolutionary algorithms. *Water Resour. Res.* **2005**, *41*, W10406. [CrossRef]
25. Kalcic, M.M.; Frankenberger, J.; Prokopy, L.; Chaubey, I. An in-depth examination of farmer perception of targeting conservation practices. *Environ. Manag.* **2014**, *54*, 795–813. [CrossRef] [PubMed]
26. Nicklow, J.W.; Reed, P.; Savic, D.; Dessalegne, T.; Harrell, L.; Chan-Hilton, A.; Karamouz, M.; Minsker, B.; Ostfeld, A.; Singh, A.; et al. State of the art for genetic algorithms and beyond in water resources planning and management. *J. Water Resour. Plan. Manag.* **2010**, *136*, 412–432. [CrossRef]
27. Cho, J.H.; Sung, K.S.; Ha, S.R. A river water quality management model for optimising regional wastewater treatment using a genetic algorithm. *J. Environ. Manag.* **2004**, *73*, 229–242. [CrossRef] [PubMed]
28. Arnold, J.G.; Srinivasan, R.; Muttiah, R.S.; Williams, J.R. Large area hydrologic modeling and assessment: Part I. Model development. *J. Am. Water Resour. Assoc.* **1998**, *34*, 73–89. [CrossRef]
29. Neitsch, S.L.; Arnold, J.G.; Kiniry, J.R.; Williams, J.R. *Soil and Water Assessment Tool Theoretical Documentation Version 2009*; Grassland, Soil and Water Research Laboratory, Agricultural Research Service and Blackland Research Center, Texas Agricultural Experiment Station: College Station, TX, USA, 2011.
30. Veith, T.L.; Wolfe, M.L.; Heatwole, C.D. Cost-effective BMP placement: Optimization versus targeting. *Trans. ASAE* **2004**, *47*, 1585–1594. [CrossRef]
31. Gitau, M.W.; Veith, T.L.; Gburek, W.J. Farm-level optimization of BMP placement for cost-effective pollution reduction. *Trans. ASAE* **2004**, *47*, 1923–1931. [CrossRef]
32. Tockner, K.; Uehlinger, U.; Robinson, C.T. *Rivers of Europe*; Academic Press: London, UK, 2009.
33. International Commission for the Protection of the Danube River. Nitrogen. 2015. Available online: <http://www.icpdr.org/main/issues/nitrogen#> (accessed on 1 May 2016).
34. Rank, D.; Papesch, W.; Tesch, R. Runoff characteristics of the upper Danube basin: Conclusions from long-term environmental isotope records. *Geophys. Res. Abstr.* **2005**, *7*, 03315.
35. Pekárová, P.; Onderka, M.; Pekár, J.; Miklánek, P.; Halmová, D.; Škoda, P.; Bačová Mitková, V. Hydrologic Scenarios for the Danube River at Bratislava. Ostrava. Available online: <http://www.pavla.pekarova.sk/monografie> (accessed on 1 January 2016).
36. Udías, A.; Malagò, A.; Pastori, M.; Vigiak, O.; Reynaud, A.; Elorza, F.J.; Bouraoui, F. A decision support tool (R-SWAT-DS) for integrated watershed management. In Proceedings of the 8th International Congress on Environmental Modelling and Software, Toulouse, France, 10–14 July 2016.
37. Vogt, J. *A Pan-European River and Catchment Database*; JRC Reference Reports EUR 229220 EN; Publications Office of the European Union: Luxembourg, 2007.
38. FAO; IIASA; ISRIC; ISS-CAS; JRC. *Harmonized World Soil Database (Version 1.0)*; FAO: Rome, Italy; IIASA: Laxenburg, Austria, 2008.

39. Ntegeka, V.; Salamon, P.; Gomes, G.; Sint, H.; Lorini, V.; Thielen, J. EFAS-Meteo: A European daily high-resolution gridded meteorological data set for 1990–2011. *Publ. Off. Eur. Union* **2011**. [CrossRef]
40. Britz, W. *CAPRI Modelling System Documentation, Final Report of the FP5 Shared Cost Project CAP-STRAT “Common Agricultural Policy Strategy for Regions, Agriculture and Trade”*; QLTR 2000-00394; Universität Bonn: Bonn, Germany, 2004.
41. Monfreda, C.; Ramankutty, N.; Foley, J. Farming the planet: 2. Geographic distribution of crop areas, yields, physiological types, and net primary production in the year 2000. *Glob. Biogeochem. Cycles* **2008**, *22*, GB1022. [CrossRef]
42. Goldewijk, K.; van Drecht, G. HYDE 3: Current and historical population and land cover. In *Integrated Modeling of Global Environmental Change. An Overview of IMAGE 2.4.93-111*; Netherlands Environmental Assessment Agency (MNP): Bilthoven, The Netherlands, 2006.
43. Bartholome, E.; Belward, A.S. GLC2000: A new approach to global land cover mapping from earth observation data. *Int. J. Remote Sens.* **2005**, *26*, 1959–1977. [CrossRef]
44. EUROSTAT. European Statistics Database. Available online: <http://www.ec.europa.eu/eurostat/data/database/> (accessed on 1 April 2015).
45. Malagò, A.; Vigiak, O.; Bouraoui, F.; Franchini, M. The hillslope Length impact on SWAT streamflow prediction in large Basins. *J. Environ. Inf.* **2016**, in press.
46. European Topic Centre on Islands, Coastal and Marine waters (ICM). Waterbase: Urban Waste Water Treatment Directive. Version 2. Date of Delivery: 07/02/2011. Available online: <http://www.eea.europa.eu/data-and-maps/data/waterbase-uwatd-urban-waste-water-treatment-directive-1> (accessed 23 April 2015).
47. Wriedt, G.; van der Velde, M.; Aloe, A.; Bouraoui, F. Estimating irrigation water requirements. *Eur. J. Hydrol.* **2009**, *373*, 527–544. [CrossRef]
48. Malagò, A.; Venhor, M.; Gericke, A.; Vigiak, O.; Bouraoui, F.; Grizzetti, B.; Kovacs, A. Modelling nutrient pollution in the Danube River Basin: A comparative study of SWAT, MONERIS and GREEN models. *Publ. Off. Eur. Union* **2015**. [CrossRef]
49. Abbaspour, K.C.; Rouholahnejad, E.; Vaghefa, S.; Srinivasan, R.; Yang, H.; Kløve, B. A continental-scale hydrology & water quality model for Europe: Calibration & uncertainty of a high-resolution large-scale SWAT model. *J. Hydrol.* **2015**, *524*, 733–752.
50. Moriasi, D.N.; Arnold, J.G.; Liew, M.W.V.; Bingner, R.L.; Harmel, R.D.; Veith, T.L. Model evaluation guidelines for systematic quantification of accuracy in watershed simulations. *Trans. ASABE* **2007**, *50*, 885–900. [CrossRef]
51. Dworak, T.; Berglund, M.; Schilling, C.; Windhofer, G.; Zessner, M.; Lampert, C. *Methodology for selecting Cost-Effective Measures to Tackle Nutrient Pollution from the Agricultural, Municipal and Industrial Sectors in the Black Sea*; Final Report of the UNDP-GEF Black Sea Ecosystem Recovery Project (PIMS 3065); Ecologic gGmbH: Berlin, Germany, 2008.
52. European Commission. Nitrogen in Agriculture. Available online: http://www.ec.europa.eu/agriculture/envir/report/en/nitro_en/report.htm (accessed on 1 May 2016).
53. USDA. United States Department of Agriculture—Economic Research Service. Fertilizer Use and Price. Available online: <http://www.ers.usda.gov/data-products/fertilizer-use-and-price.aspx> (accessed on 1 May 2016).
54. Srinivas, N.; Deb, K. Multiobjective optimization using nondominated sorting in genetic algorithms. *Evol. Comput.* **1994**, *2*, 221–248. [CrossRef]
55. Pareto, V. *Manual of Political Economy*; Schwier, A.S., Page, A.N., Eds.; Augustus M. Kelley Publ.: New York, NY, USA, 1971.
56. Nocedal, J.; Wright, S.J. *Numerical Optimization*; Springer Verlag: New York, NY, USA, 1999.
57. Deb, K. *Multi-Objective Optimization using Evolutionary Algorithms*; Wiley: Hoboken, NJ, USA, 2001; p. 518.
58. Muleta, M.K.; Nicklow, J.W. Watershed management technique to control sediment yield in agriculturally dominated areas. *Water Int. IWRA* **2001**, *26*, 435–443.
59. Udías, A.; Galbiati, L.; Elorza, F.J.; Efremov, R.; Pons, J.; Borrás, G. Framework for multi-criteria decision management in watershed restoration. *J. Hydroinform.* **2012**, *14*, 395–411. [CrossRef]
60. International Commission for the Protection of the Danube River. *Danube River Basin District Management Plan. Part A—Basin-Wide Overview*; ICPDR Secretariat, Vienna International Centre: Vienna, Austria, 2009.

61. EUROSTAT. Agri-Environmental Indicator-Gross Nitrogen Balance. Available online: <http://www.ec.europa.eu/eurostat/> (accessed on 1 May 2016).
62. Kunikova, E. *Reducing Nutrient Pollution, Challenges in Agriculture*; Background Paper Presented at the Workshop on the Joint Program of Measures; Water Research Institute Bratislava: Vienna, Austria, 2013.
63. Huang, W.-H. Using insurance to enhance nitrogen fertilizer application timing to reduce nitrogen losses. *J. Agric. Appl. Econ.* **2002**, *34*, 131–148. [[CrossRef](#)]
64. European Court of Auditors. *Water Quality in the Danube River Basin: Progress in Implementing the Water Framework Directive But Still Some Way to Go*; Special Report 2015-23; Publications Office of the European Union: Luxembourg, 2015.
65. European Court of Auditors. *EU-Funding of Urban Waste Water Treatment Plants in the Danube River Basin: Further Efforts Needed in Helping Member States to Achieve EU Waste Water Policy Objectives*; Special Report 2015-02; Publications Office of the European Union: Luxembourg, 2015.



© 2016 by the authors; licensee MDPI, Basel, Switzerland. This article is an open access article distributed under the terms and conditions of the Creative Commons Attribution (CC-BY) license (<http://creativecommons.org/licenses/by/4.0/>).