

Ablative study of different thresholds for 3-level classification in our study

Study	Level-1	Level-2	Level-3a	Level-3b
1	-1 to 0: non-vegetation 0 to 1: vegetation	0 to 0.30: shrub 0.30 to 1: trees	0 to 0.15: stressed shrub 0.15 to 0.30: healthy shrub	0.30 to 0.40: stressed trees 0.40 to 1: healthy trees
2	-1 to 0.20: Non-vegetation, 0.20 to 1: vegetation	0.20 to 0.40: shrub 0.40 to 1: trees	0.20 to 0.30: stressed shrub 0.30 to 0.40: healthy shrub	0.40 to 0.50: stressed trees 0.50 to 1: healthy trees
3	-1 to 0.25: non-vegetation 0.25 to 1: vegetation	0.25 to 0.35: shrub 0.35 to 1: trees	0.25 to 0.30: stressed shrub 0.30 to 0.35: healthy shrub	0.35 to 0.45: stressed trees 0.45 to 1: healthy trees
4	-1 to 0.19: non-vegetation 0.19 to 1: vegetation	0.19 to 0.50: shrub 0.50 to 1: trees	0.19 to 0.40: stressed shrub 0.40 to 0.50: healthy shrub	0.50 to 0.60: stressed trees 0.60 to 1: healthy trees

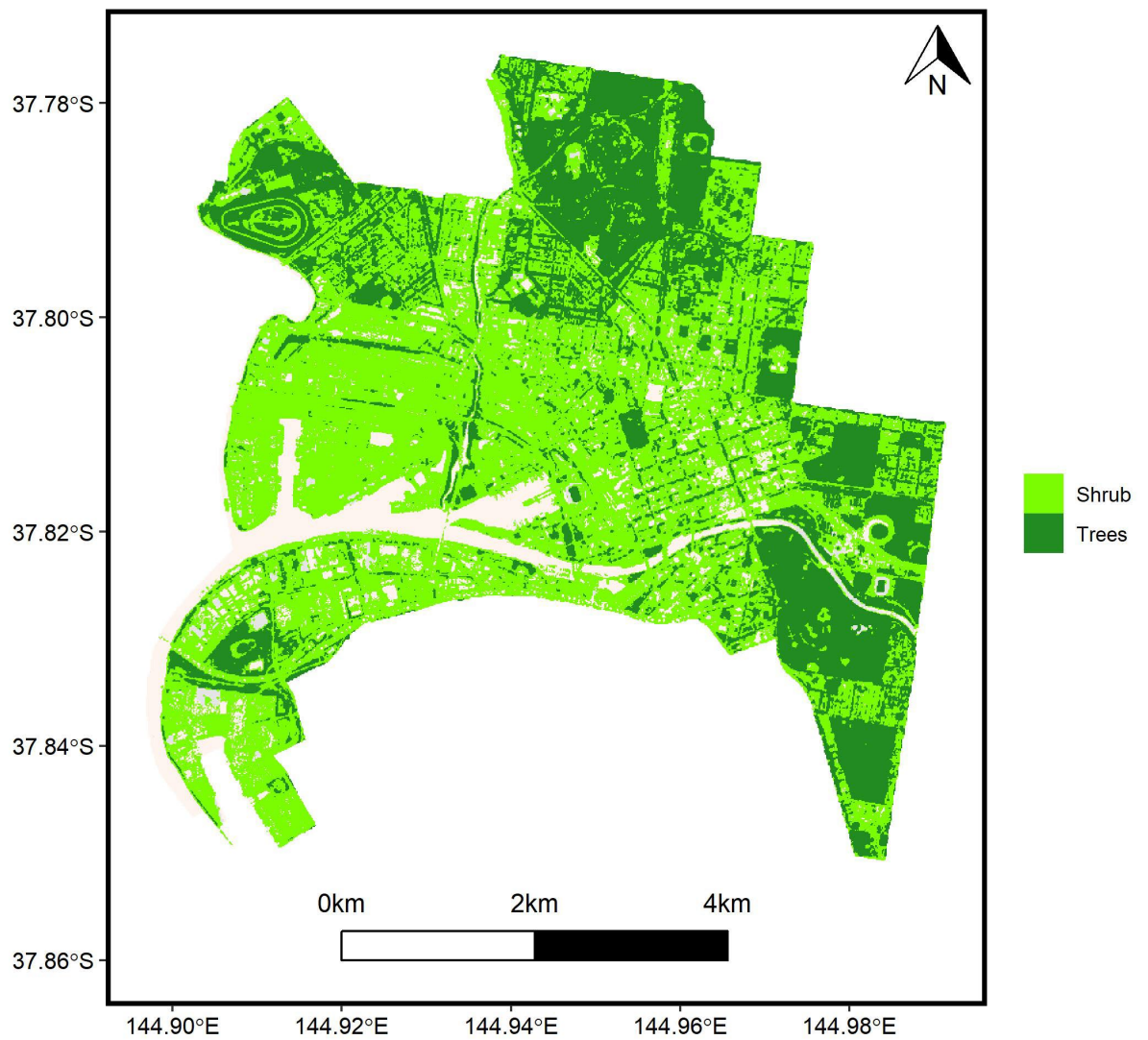
Table S1: Ablative study of different thresholds for 3-level classification. Note that boldface represents the **optimal thresholds** used in our work.

Study 1:

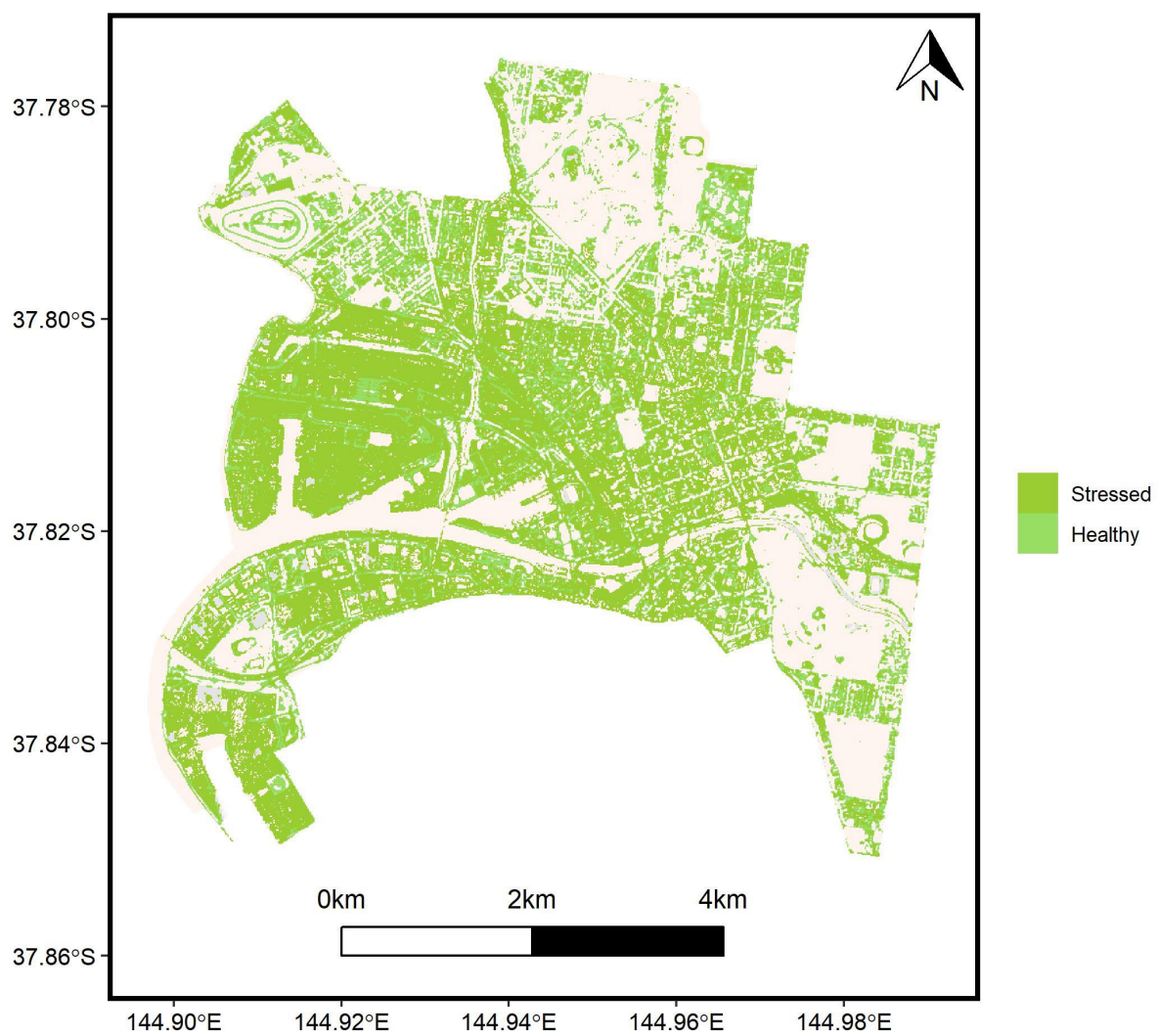
Level-1



Level-2



Level-3a



Level-3b

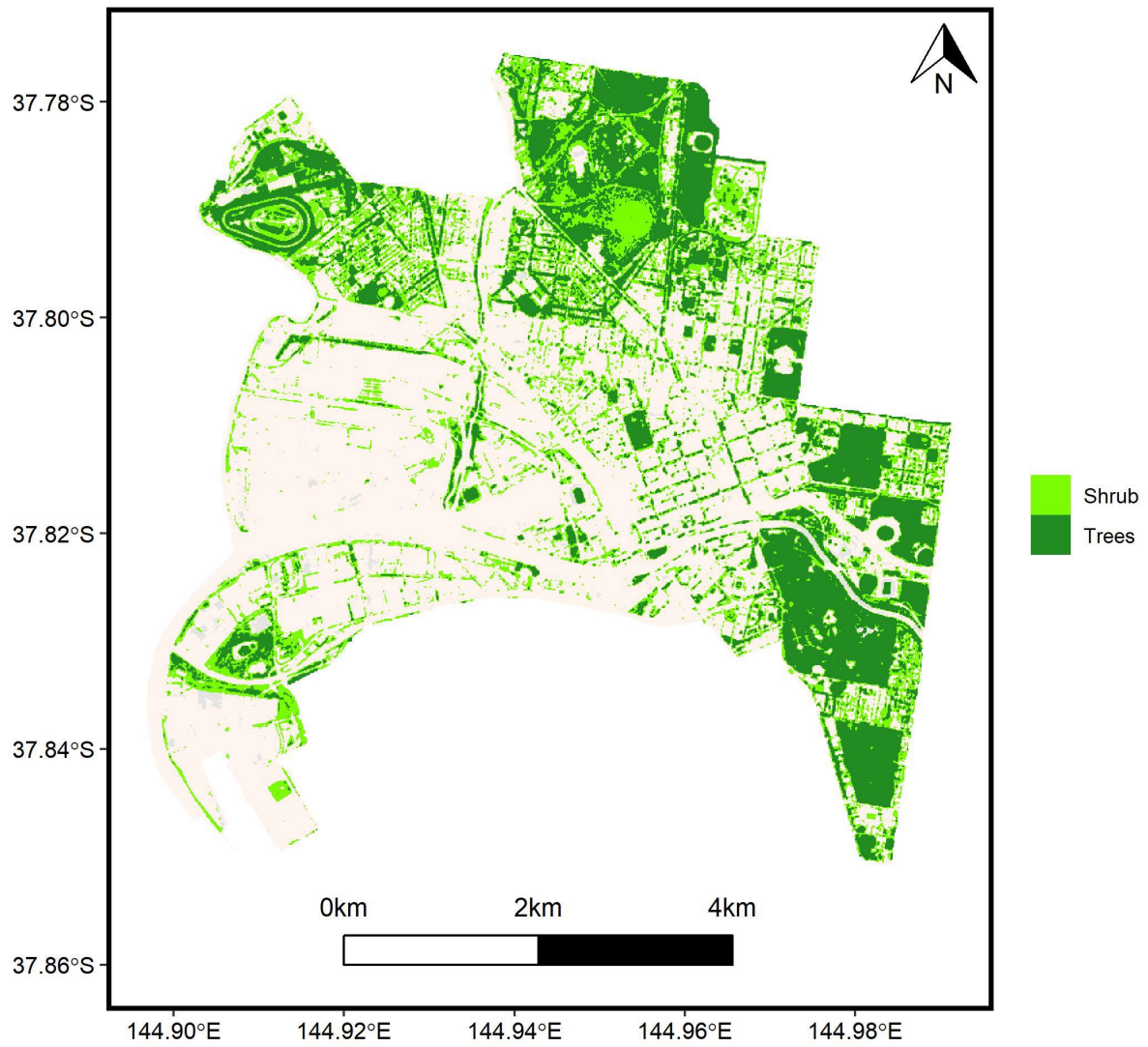


Study 2:

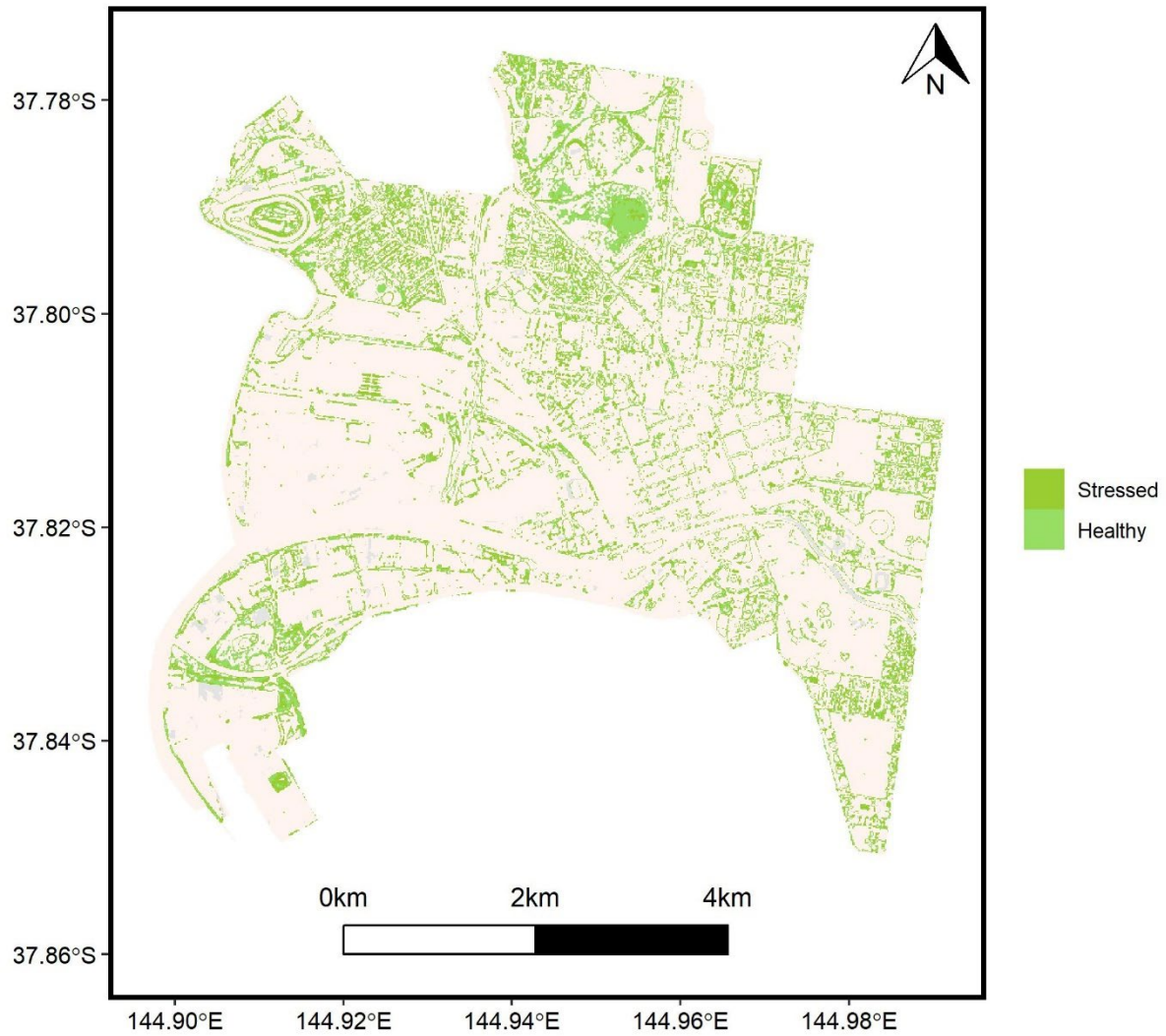
Level 1:



Level 2:



Level 3a:



Level 3b

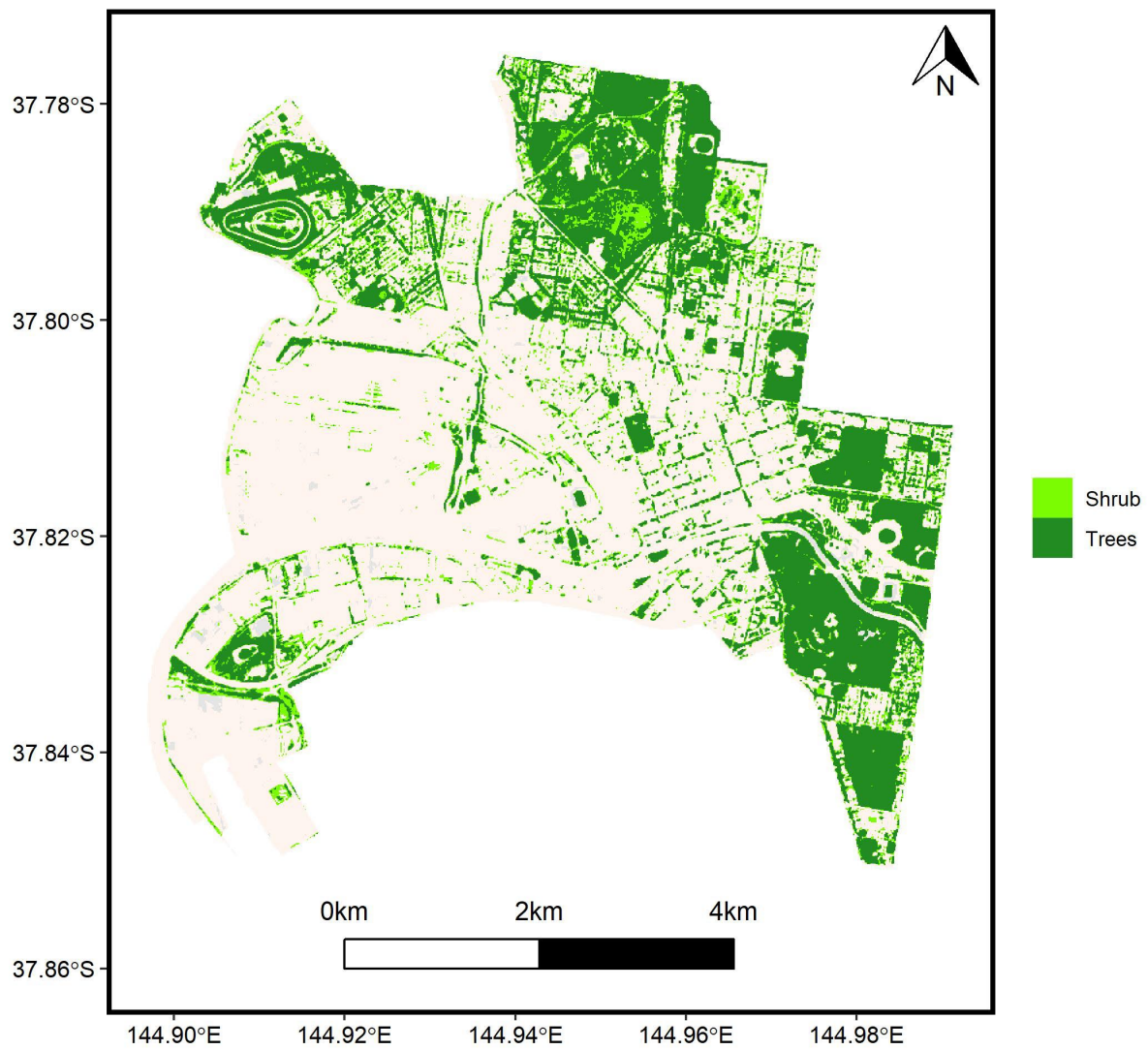


Study 3:

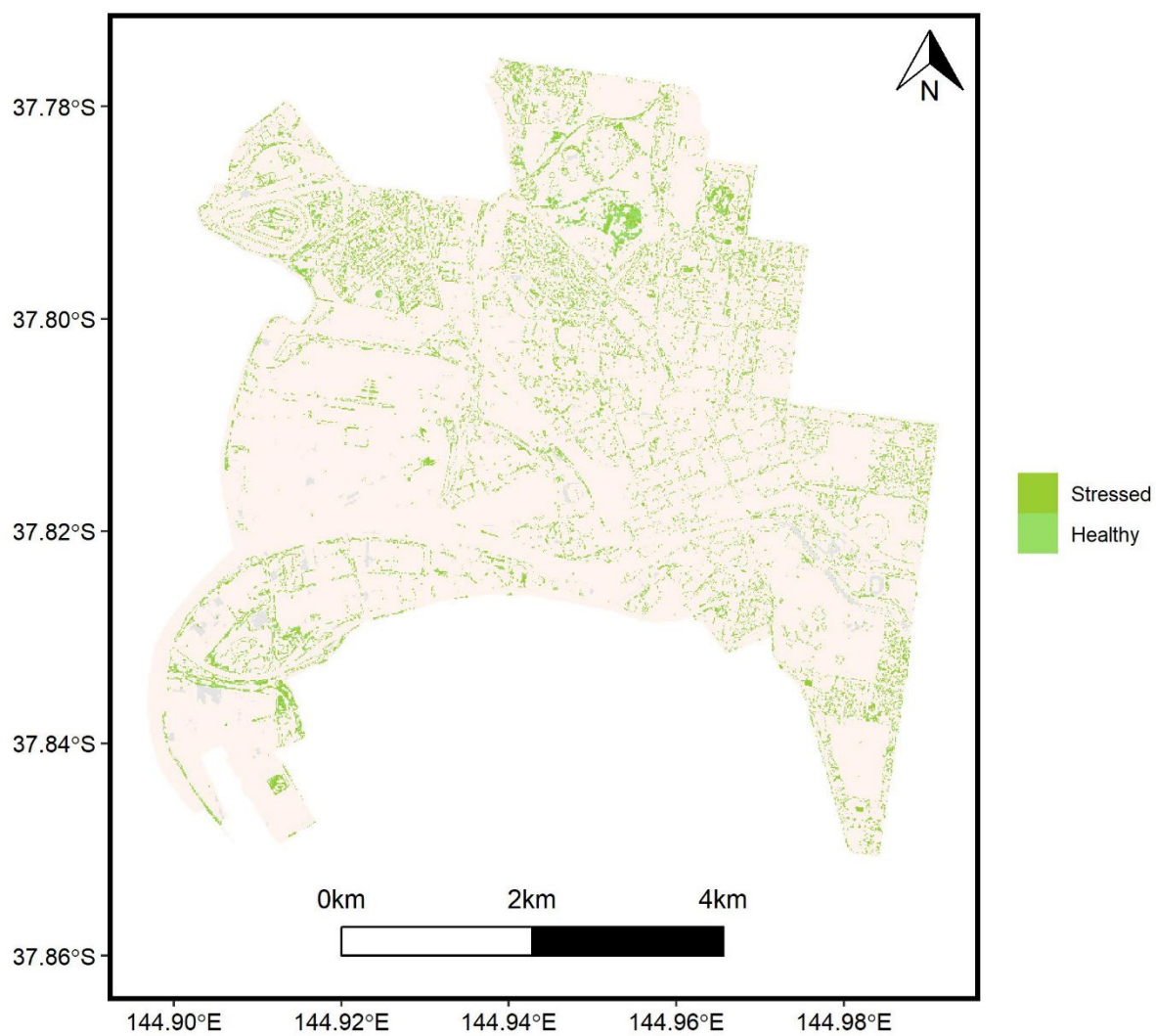
Level 1



Level 2



Level 3a



Level 3b

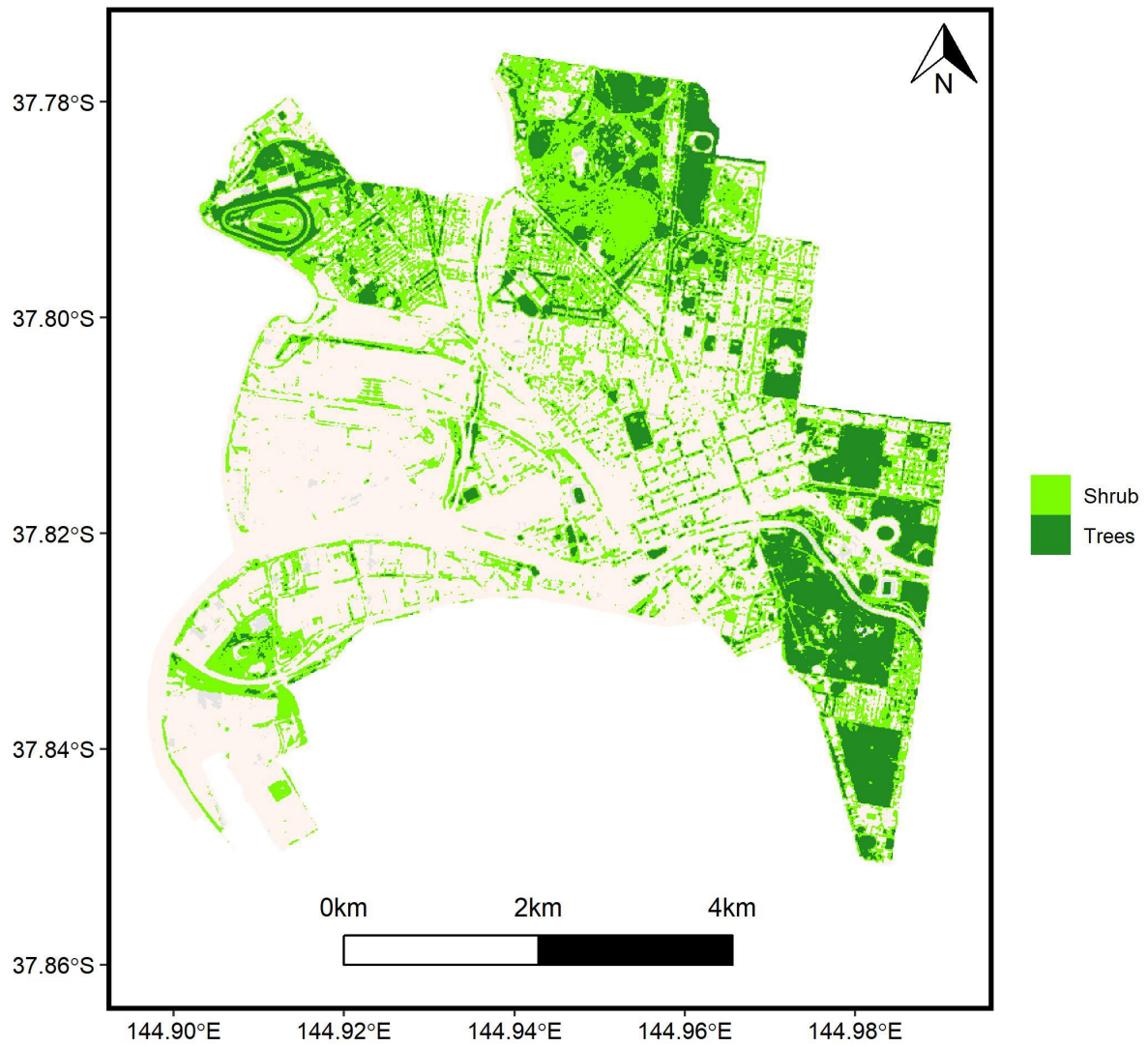


Study 4:

Level 1



Level 2



Level 3a



Level 3b

