

## Supplement of

# Long-Term Variations in Warm and Cold Events in Nanjing, China: Roles of Synoptic Weather Patterns and Urbanization

Weishou Tian, Lian Zong, Yakun Dong, Duanyang Liu and Yuanjian Yang

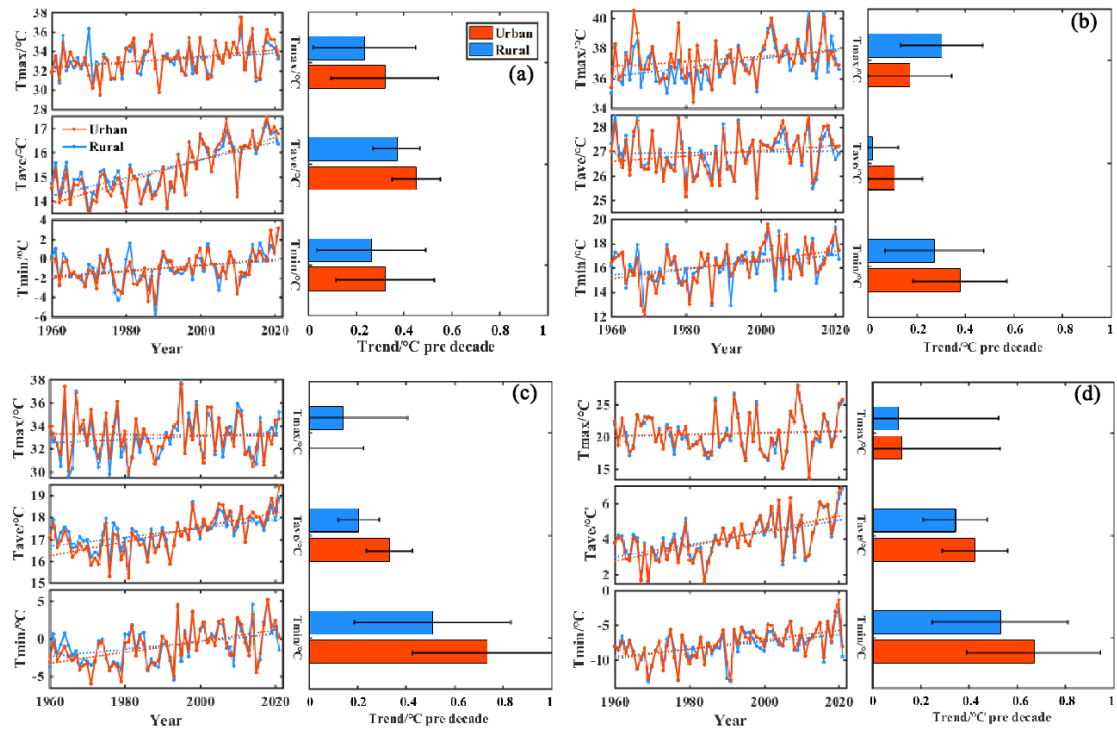


Figure S1. Time series of maximum/mean/minimum temperature in urban areas and rural areas during 1960–2021: (a) Spring; (b) Summer; (c) Autumn; (d) Winter. The red and blue dashed lines in the left-hand panel and the columns in the right-hand panel indicate their corresponding linear trends. Error bars in the right-hand panels indicate the 95% confidence interval.

Table S1. Interannual and intraseasonal trends in urban and rural warm days; cold days; warm nights; cold nights, along with the contribution of urbanization. (Statistical significance level at the 0.05 is denoted by \*, and a tilde (~) indicates that the effect of urbanization failed the 0.05 significance test and no calculation of the urbanization contribution was performed).

Time	Urban (warm day/warm night/cold day/cold night) Frequency Trends (day/decade)	Rural (warm day/warm night/cold day/cold night) Frequency Trends (day/decade)	Urbanization contribution rate(%)
Interannual variation	0.45/1.74*/-1.32*/-3.18*	1.45*/1.82*/-1.15/-2.48*	~-4.6/~/-22.01
Spring	0.29*/0.28/-0.3/-0.41*	0.27*/0.33*/-0.25/-0.48*	6.7/~/-17.07
Summer	0.45/1.17*/0.08/-0.7*	1.05*/0.85*/0.11/-0.62*	~/27.35/~/-11.43
Autumn	0.03/0.44/-0.18/-0.81*	0.41/0.26/-0.24/-0.52*	~/~/~-35.8
Winter	0.01/0.47*/-0.42/-1.21*	0.01/0.65*/-0.51/-0.73*	~/-38.3/~/-39.67