

Supplementary material:Land use dynamics of drove roads: the case of Tratturo Castel di Sangro-Lucera (Molise, Italy)

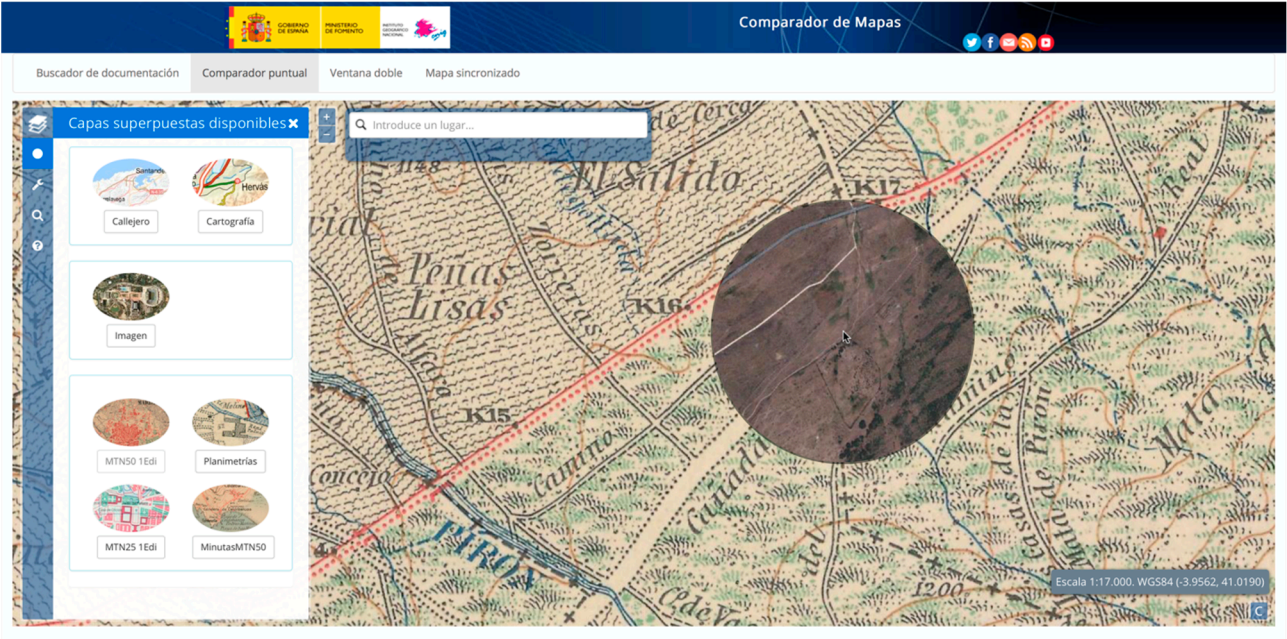


Figure S1. Spanish National Geographic Information Center. It is possible to download from the cartographic portal <http://www.ign.es/web/ign/portal/inicio> several maps, which show the boundaries of drove roads and frequently land use features. Some of these maps are: IGYE maps of year 1900 (scale 1:25,000), IGN (scale 1:50,000) years 1938-1940 and more recent maps with various scales drawn up between 1985 and 2014. Moreover, it is also possible to download aerial photograms and orthophotos realized between 1970 and 2014.

Table S1: Detail of cartographic documentation described in Figure S1.

	Source	Scale	Time frame
Documentación geográfica antigua	IGYE	1:25,000	1900
Mapas impresos escaneados - Mapas en formato imagen	IGN	1:25,000	1985-2014
Mapas impresos escaneados - Mapas en formato imagen	IGN	1:50,000	1920-2014
Fotogramas y ortofotos de vuelos	IGN	various	1973-2014

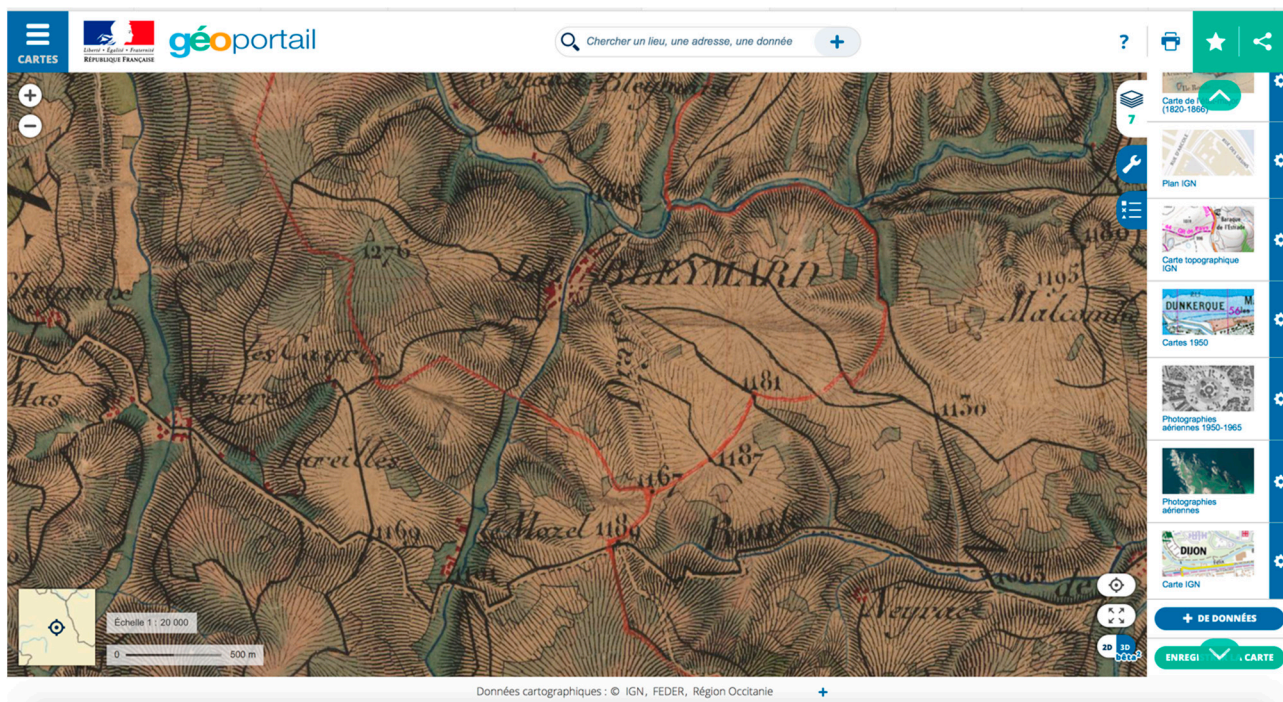


Figure S2. French cartographic portal <https://www.geoportail.gouv.fr>. It is possible to consult several maps, where the draylles are drawn up. Some of these maps are: Carte d'État-Major (scale 1:40,000) drawn up between 1820 and 1866, Cartographic maps of 1950 (scale 1:25,000) and recent vectorial maps drawn in 2017. It is also possible to consult aerial photograms and orthophotos realized between 1950 and 2014. Moreover, the maps can be consulted thanks to the WMS service of the National Institute of Geographic and Forest Information (IGN).

Table S2: Detail of cartographic documentation described in Figure S2.

	Source	Scale	Time frame
Carte d'État-Major	Dépôt de la Guerre	1:40,000	1820-1866
Images cartographiques numériques	IGN	1:25,000	1950
Plan IGN	IGN	vector	2017
Fotogramas y ortofotos de vuelos	IGN	various	1950-2014