

Figure S1. (Continued)

Figure S1

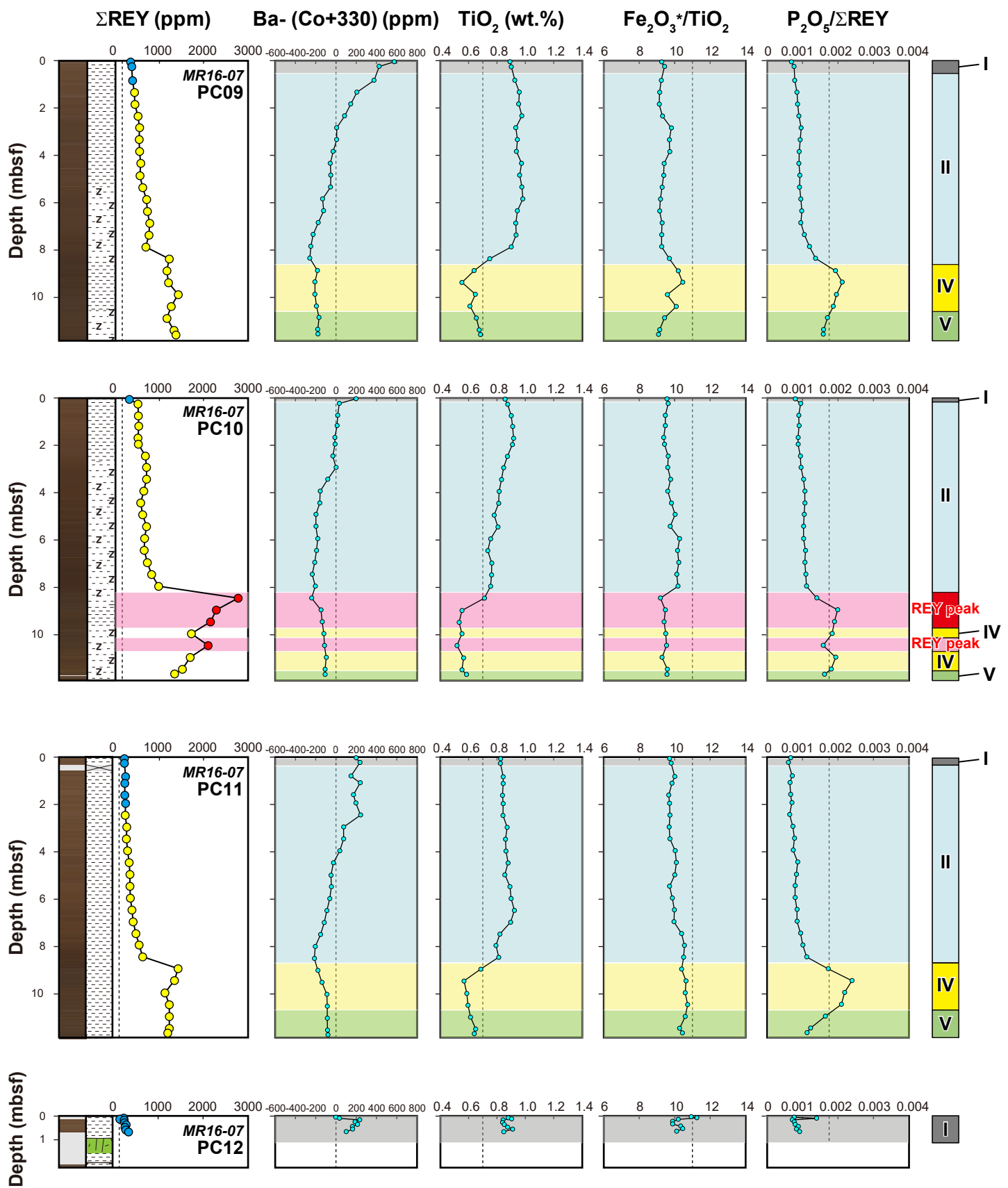


Figure S1. (Continued)

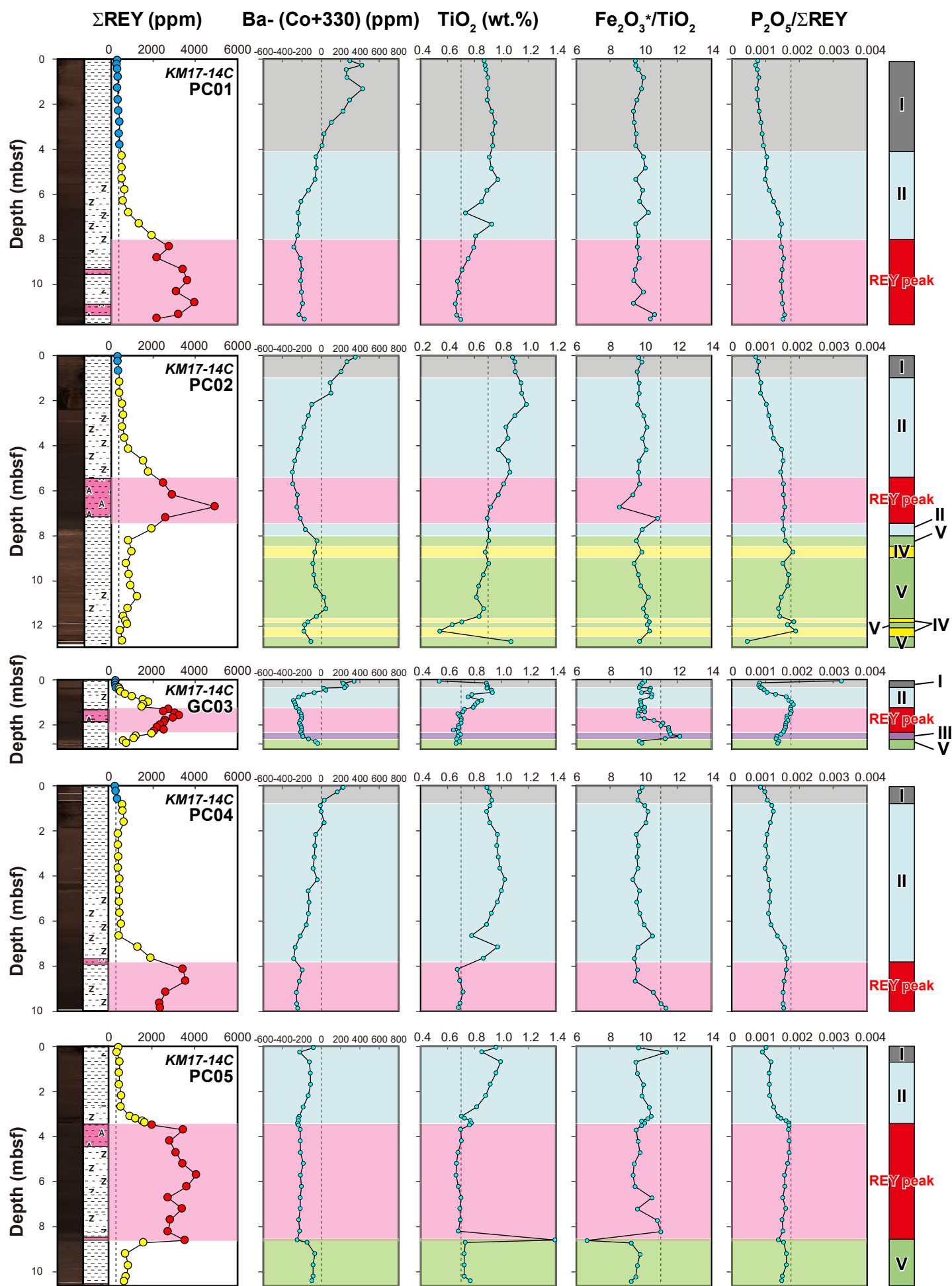


Figure S1. (Continued)

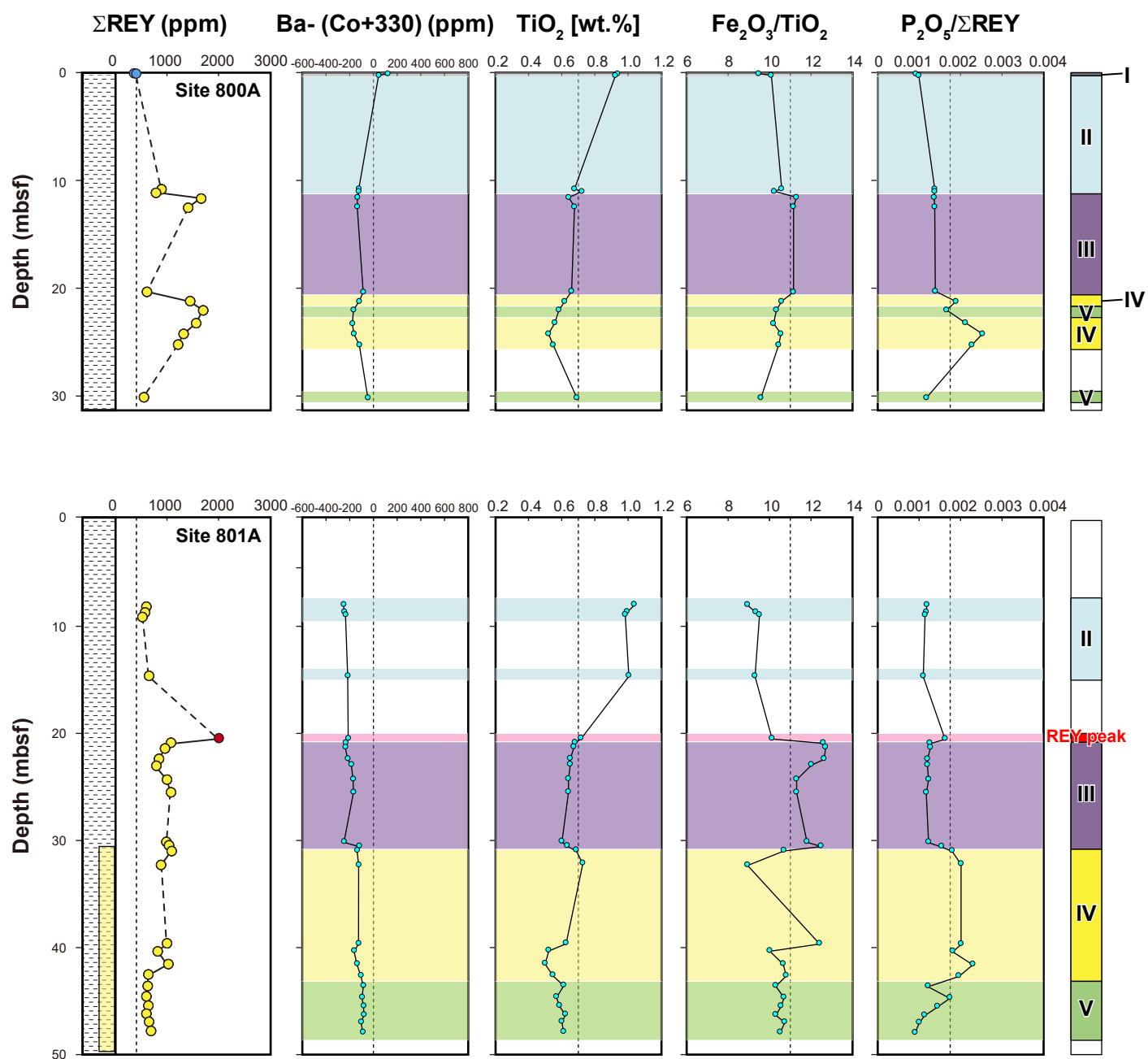


Figure S1. (Continued)

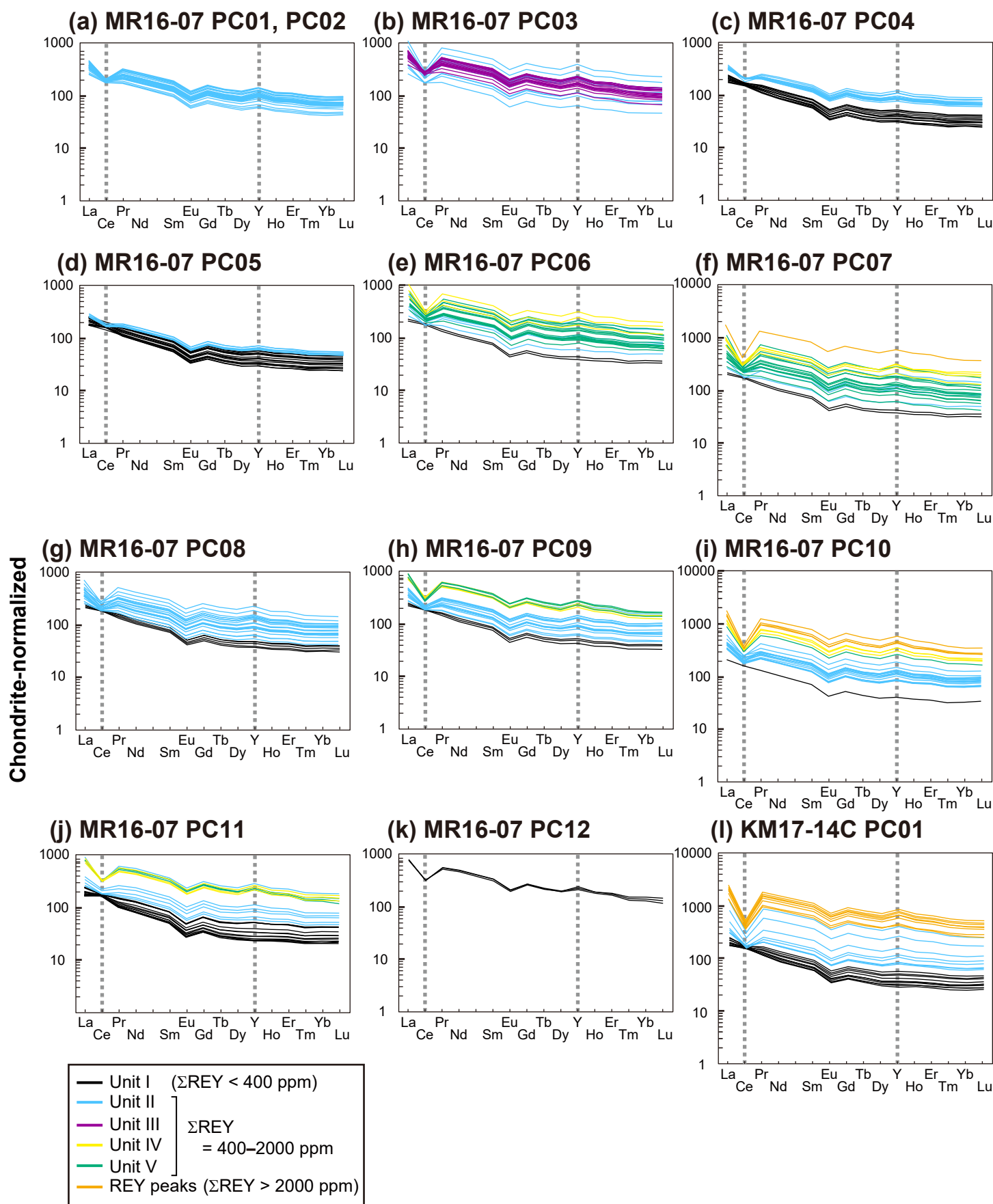


Figure S2.

CI-chondrite [30]-normalized REY pattern of all the samples. The data sources of the reference materials are as follows: Biogenic calcium phosphate (Takaya et al., 2018 [14]); deep-sea water in the western South Pacific (Zhang and Nozaki, 1996 [35]) and in the North Pacific (Alibo and Nozaki, 1999 [36]); hydrothermal sediment (Barrett and Jarvis, 1988 [37]); Mn-nodule in the Peru Basin and Clarion-Clipperton Zone (CCZ; Hein and Koschinsky, 2013 [38]) and in the Minamitorishima EEZ (Machida et al., 2016 [39]).

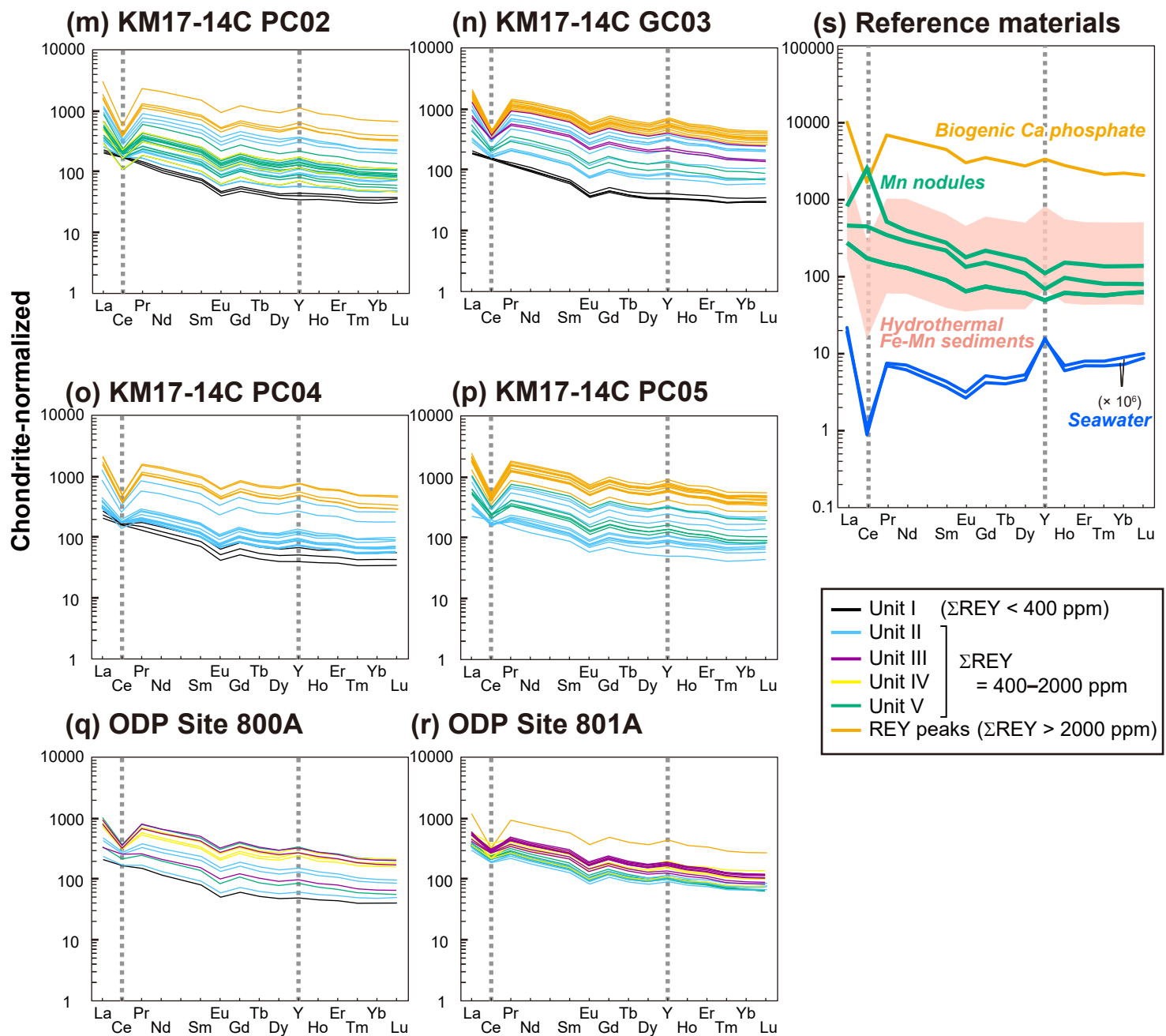


Figure S2. (Continued)