

Supplementary Materials: Automated Quantitative Characterization REE Ore Mineralogy from the Giant Bayan Obo Deposit, Inner Mongolia, China

Taotao Liu, Wenlei Song *, Jindrich Kynicky, Jinkun Yang, Qian Chen and Haiyan Tang

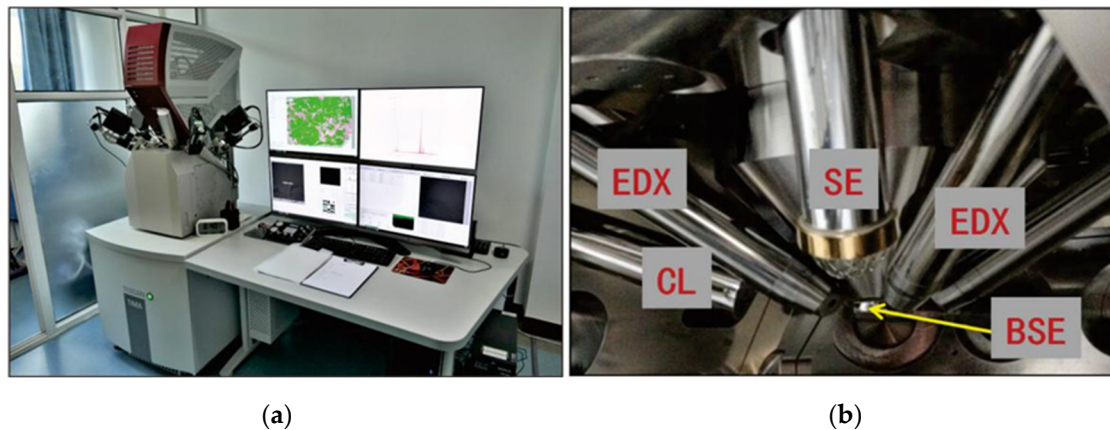


Figure S1. The TESCAN TIMA3 X GMH system of the State Key Laboratory of Continental Dynamics at Northwestern University, China (a) and the system are equipped with nine detectors (b). Detectors include four high-throughput silicon drift detectors; In-beam SE, BSE detectors; ultra-fast YAG scintillator BSE detector; SE Everhart-Thornley type detector and color cathodoluminescence (350~850 nm) detector.