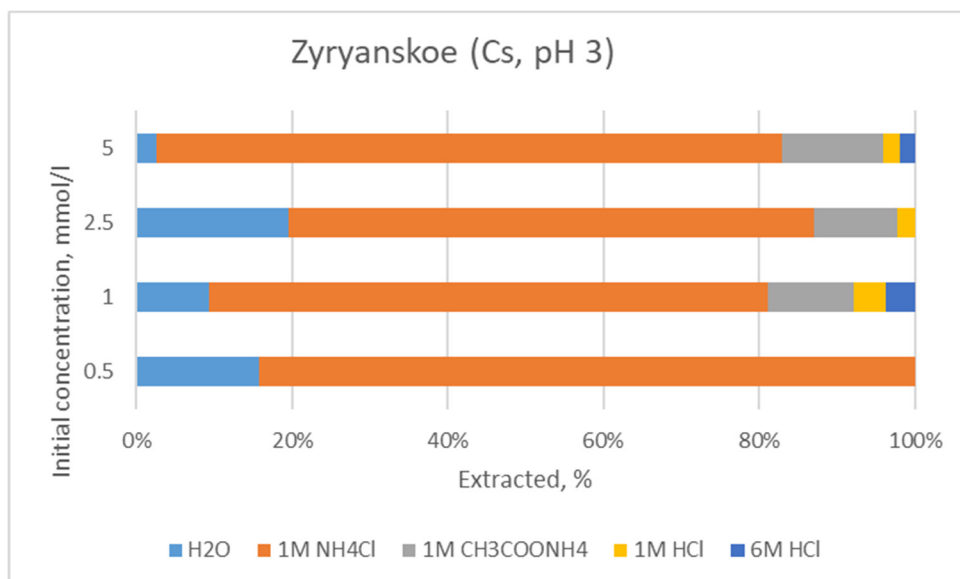
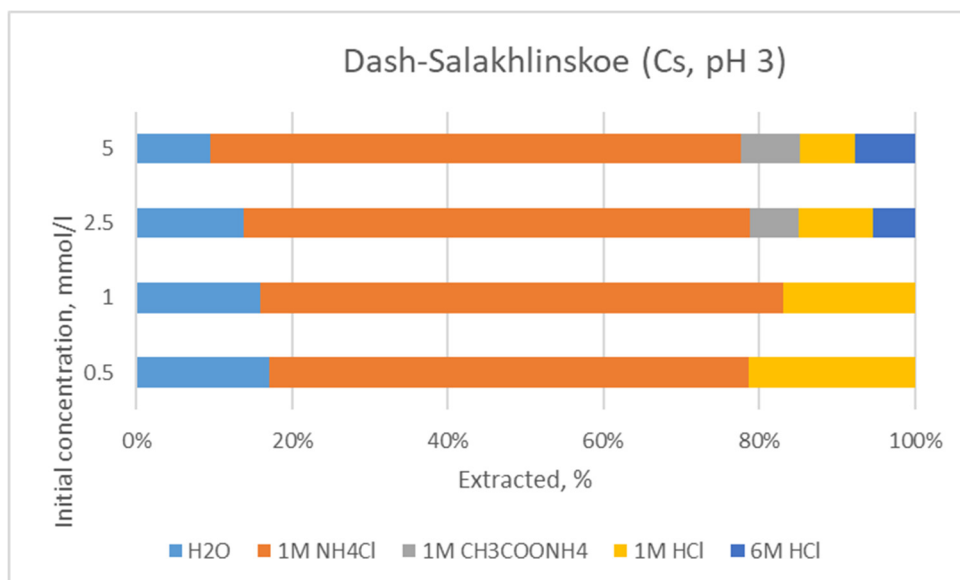
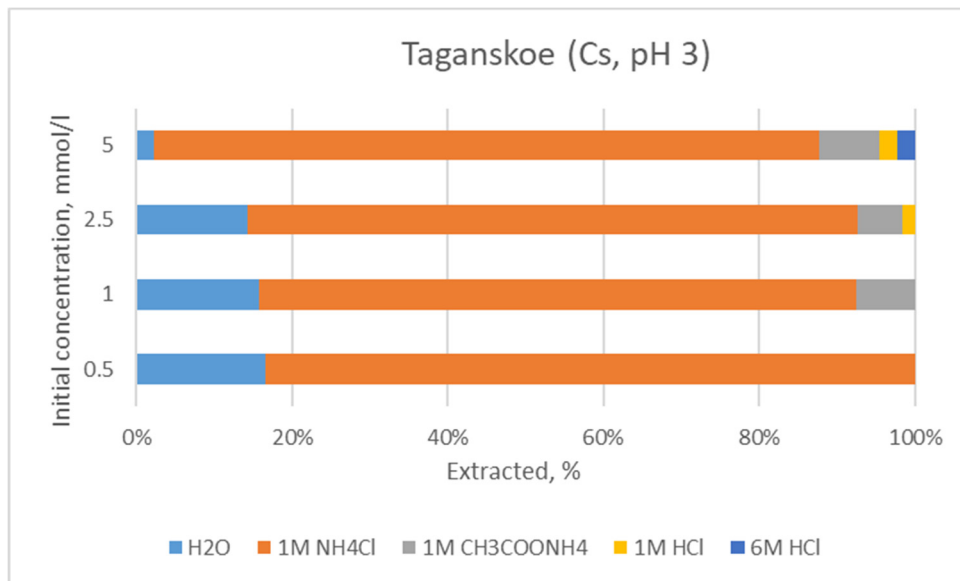
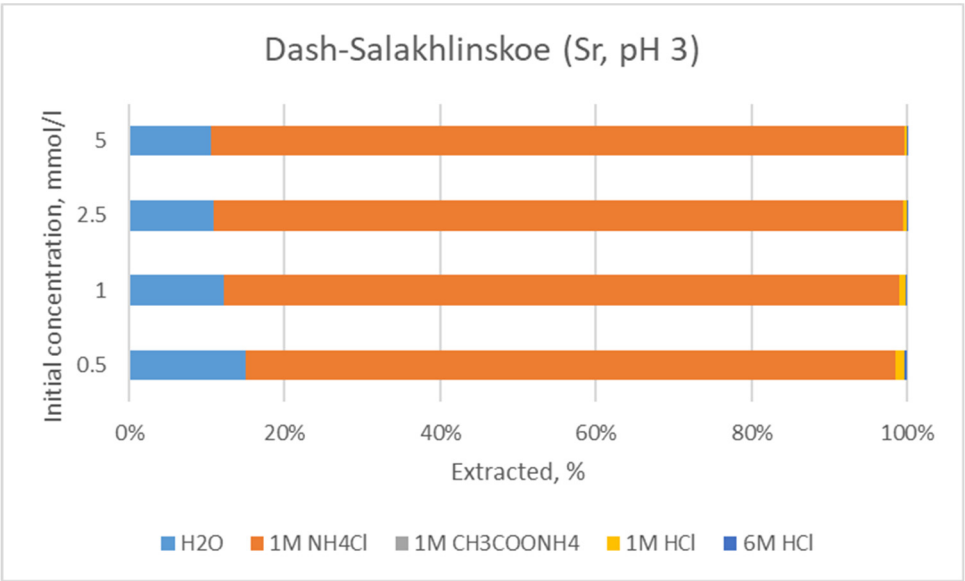
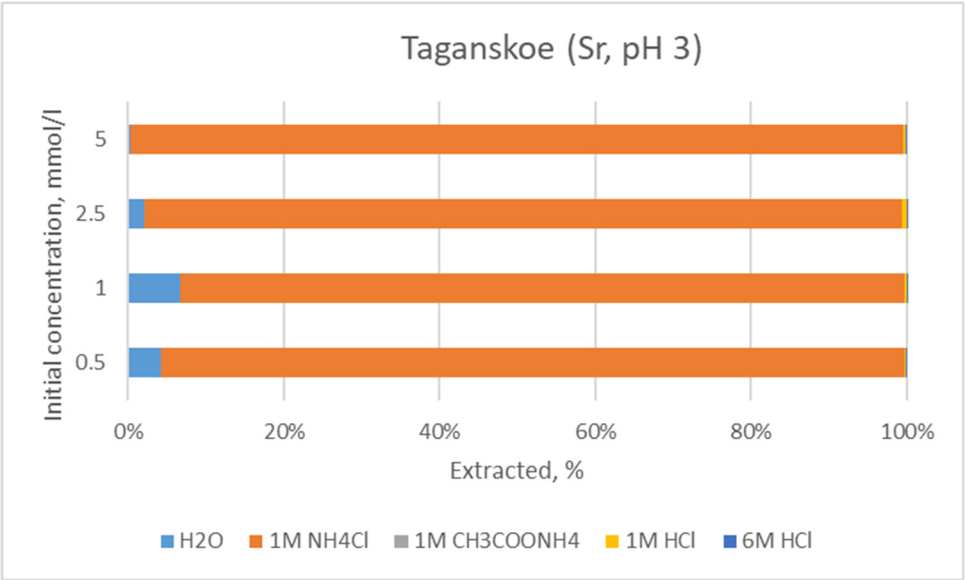
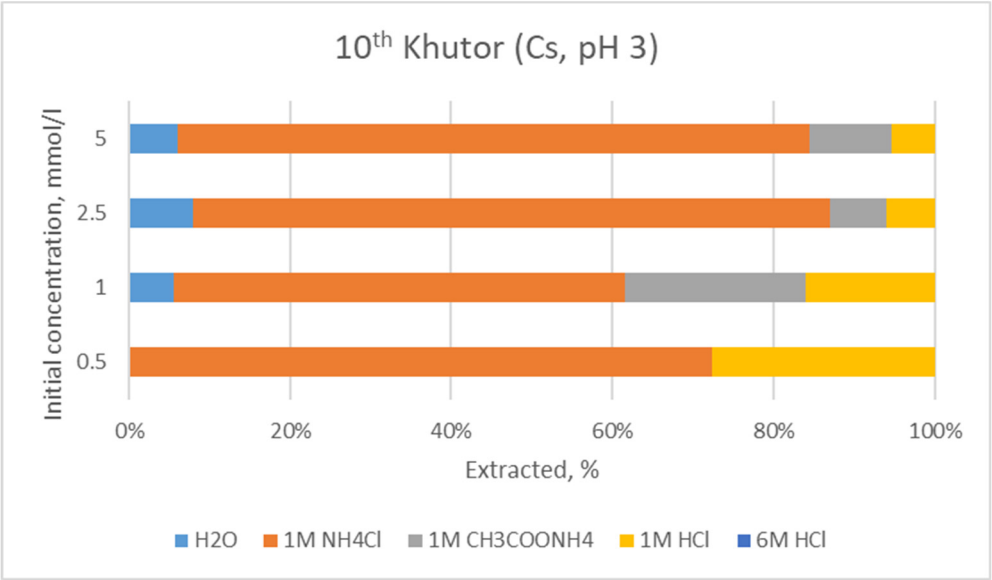
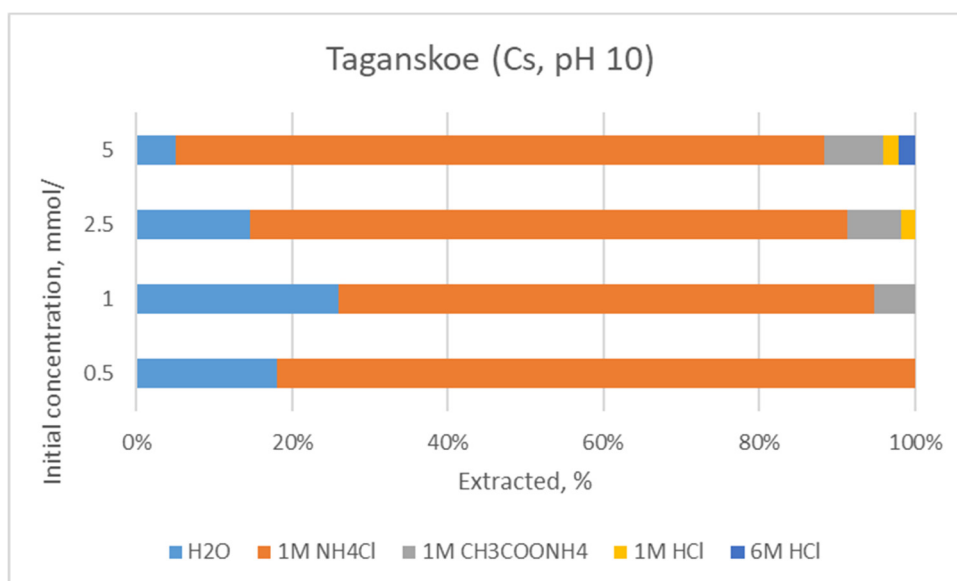
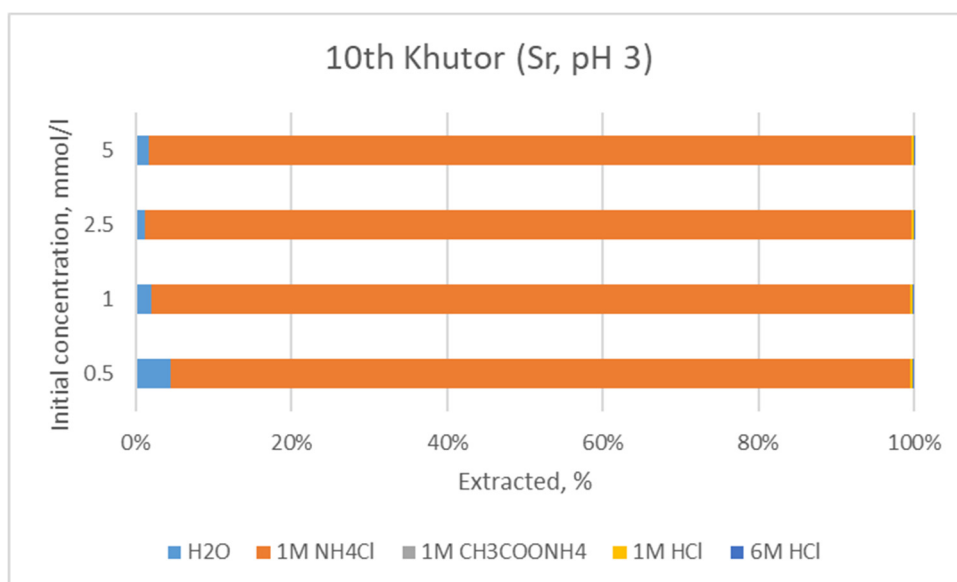
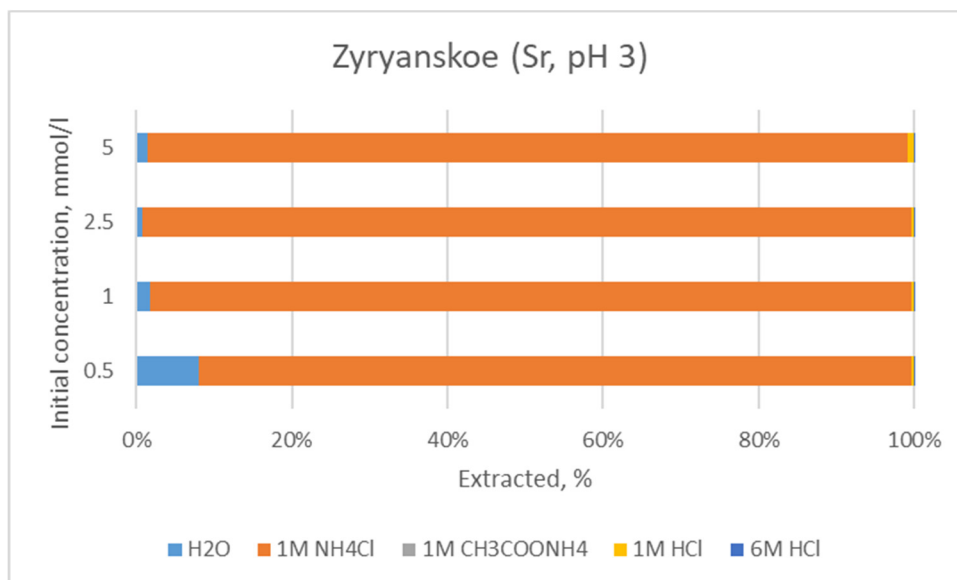


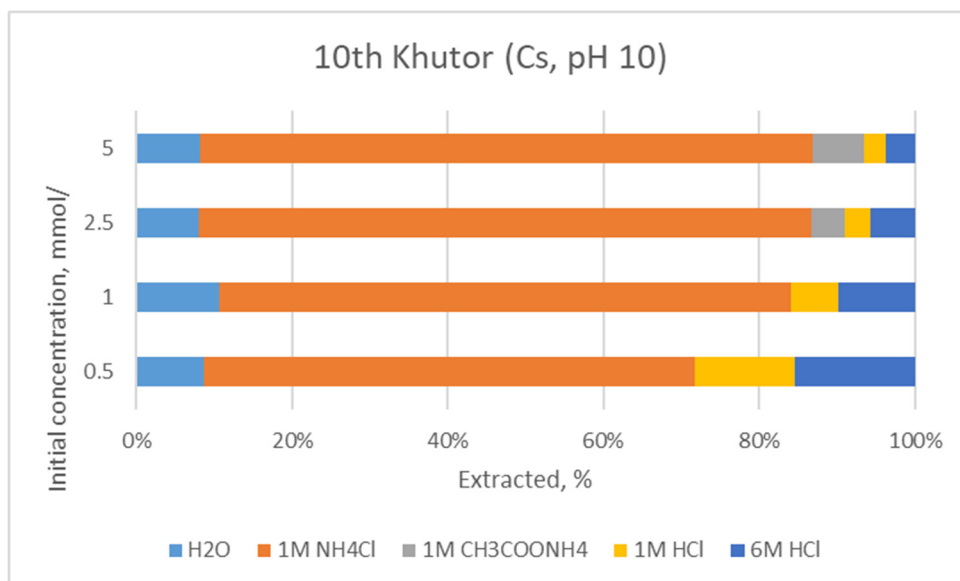
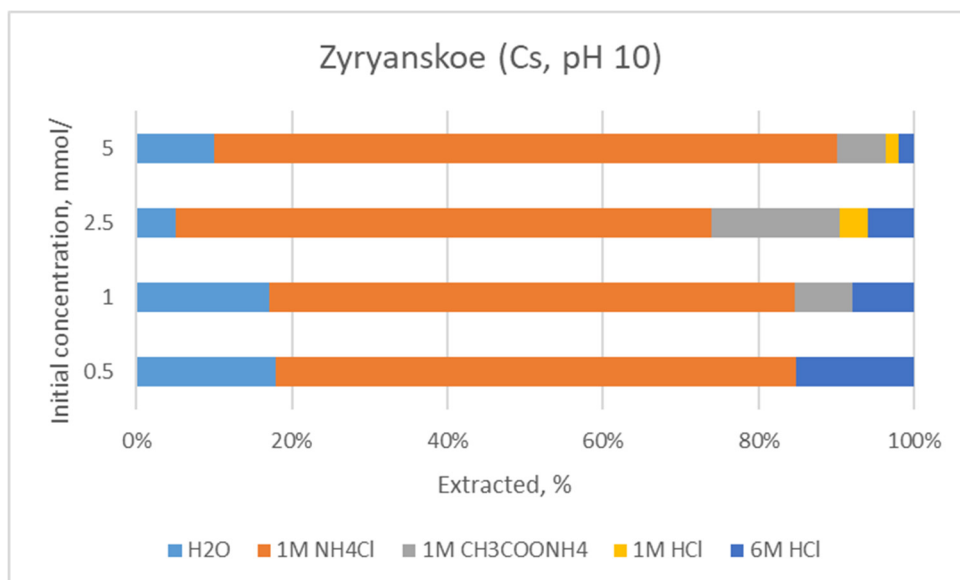
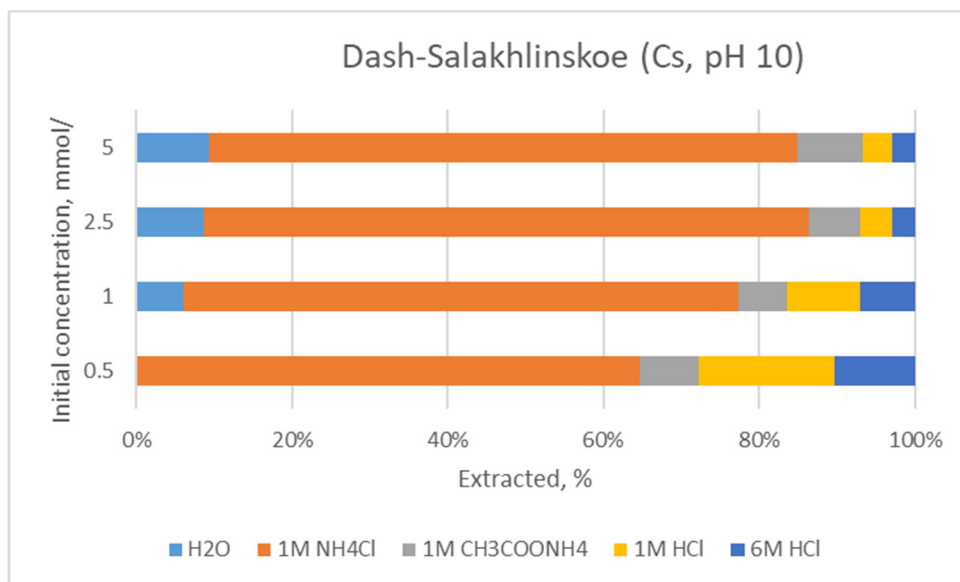
**Table S1.** Parameters of the adsorption equations.

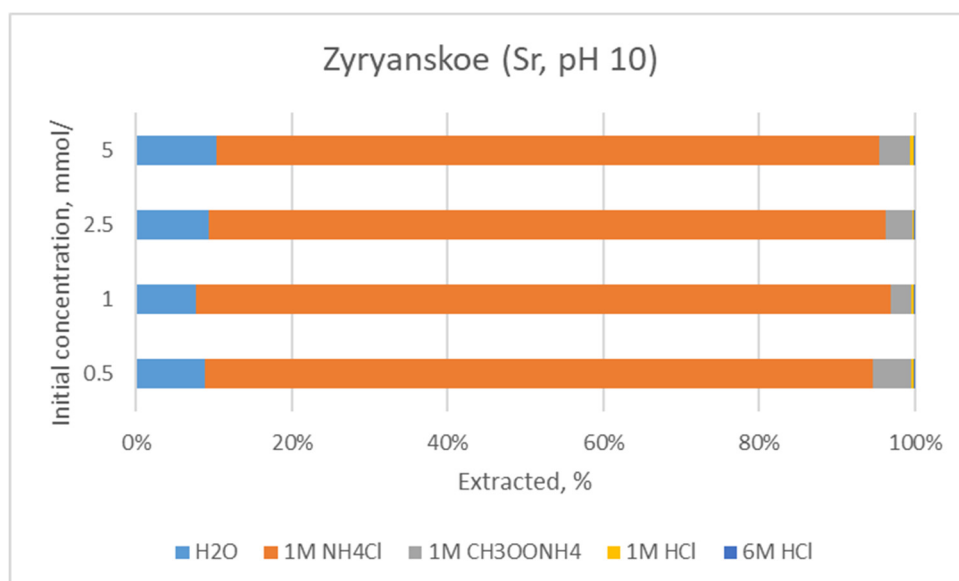
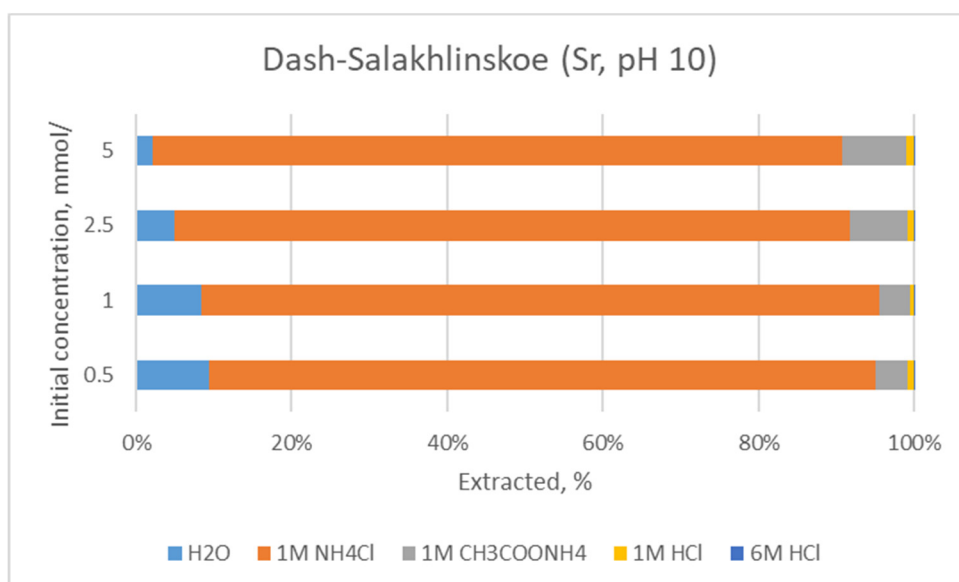
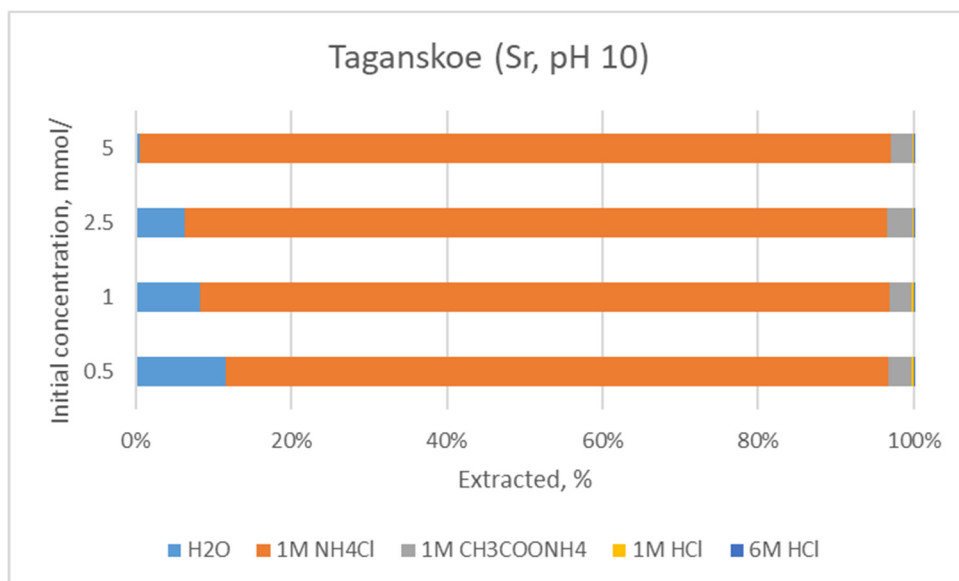
pH	Cs	Cs	Sr
	Linear equation	Freundlich equation	Freundlich equation
Taganskoe deposit			
pH 3	$y = 0.26x + 3E-06$ $R^2 = 0.97$		$n = 0.79$ $K_f = 0.06$ $R^2 = 0.86$
pH 7		$n = 0.93$ $K_f = 0.31$ $R^2 = 0.98$	$n = 0.72$ $K_f = 0.04$ $R^2 = 0.93$
pH 10		$n = 0.90$ $K_f = 0.13$ $R^2 = 0.97$	$n = 0.69$ $K_f = 0.03$ $R^2 = 0.93$
Dash-Salakhinskoe deposit			
pH 3	$y = 0.17x + 2E-06$ $R^2 = 0.97$		$n = 0.89$ $K_f = 0.06$ $R^2 = 0.97$
pH 7		$n = 0.93$ $K_f = 0.21$ $R^2 = 0.92$	$n = 0.77$ $K_f = 0.04$ $R^2 = 0.95$
pH 10		$n = 0.79$ $K_f = 0.06$ $R^2 = 1$	$n = 0.71$ $K_f = 0.03$ $R^2 = 0.95$
Zyryanskoe deposit			
pH 3	$y = 0.16x + 3E-06$ $R^2 = 0.95$		$n = 0.93$ $K_f = 0.07$ $R^2 = 0.94$
pH 7		$n = 0.96$ $K_f = 0.24$ $R^2 = 0.99$	$n = 0.81$ $K_f = 0.03$ $R^2 = 0.97$
pH 10		$n = 0.77$ $K_f = 0.04$ $R^2 = 0.99$	$n = 0.73$ $K_f = 0.02$ $R^2 = 0.96$
10 <sup>th</sup> Khutor deposit			
pH 3	$y = 0.12x - 4E-06$ $R^2 = 0.98$		$n = 1.03$ $K_f = 0.13$ $R^2 = 0.93$
pH 7		$n = 1.01$ $K_f = 0.26$ $R^2 = 0.98$	$n = 0.86$ $K_f = 0.05$ $R^2 = 0.93$
pH 10		$n = 0.83$ $K_f = 0.04$ $R^2 = 0.99$	$n = 0.75$ $K_f = 0.03$ $R^2 = 0.93$

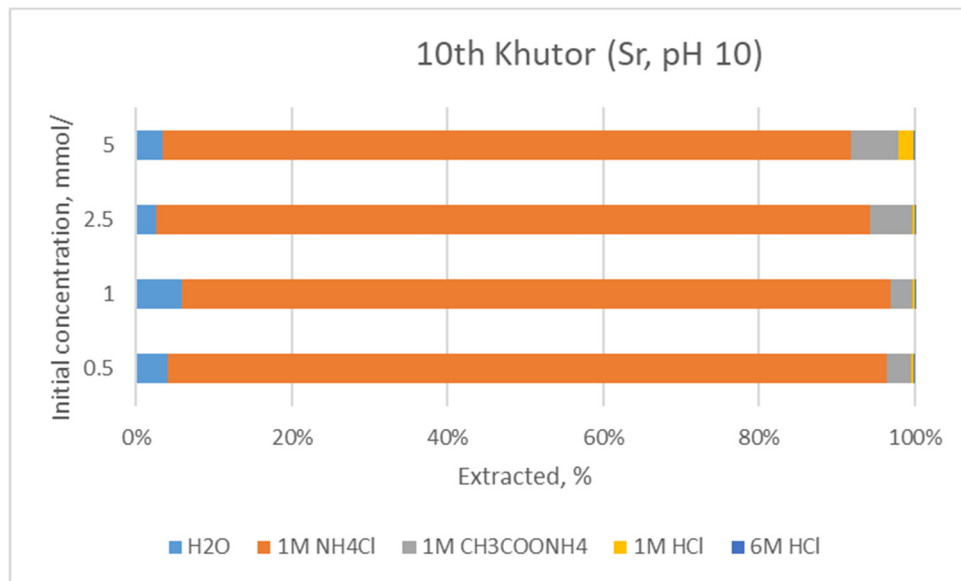












**Figure S1.** Sequential extraction results.