

Supporting Information

Figure S1. *S. oneidensis* WT strain producing non-crystalline U(IV). (a) STXM carbon speciation represented by red-green-blue tri-color map. Protein is shown in red, lipid in green, and polysaccharide in blue. (b) Corresponding U map showing the co-localization of U with EPS. The scale bar corresponds to 1 μm .

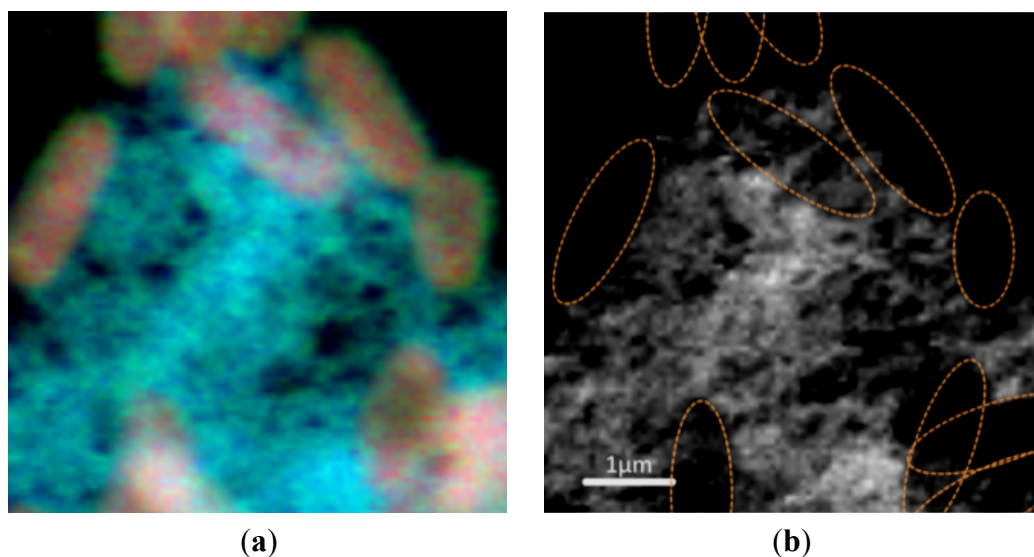


Figure S2. Reference spectra for the generation of the tricolor map in Figure 5.

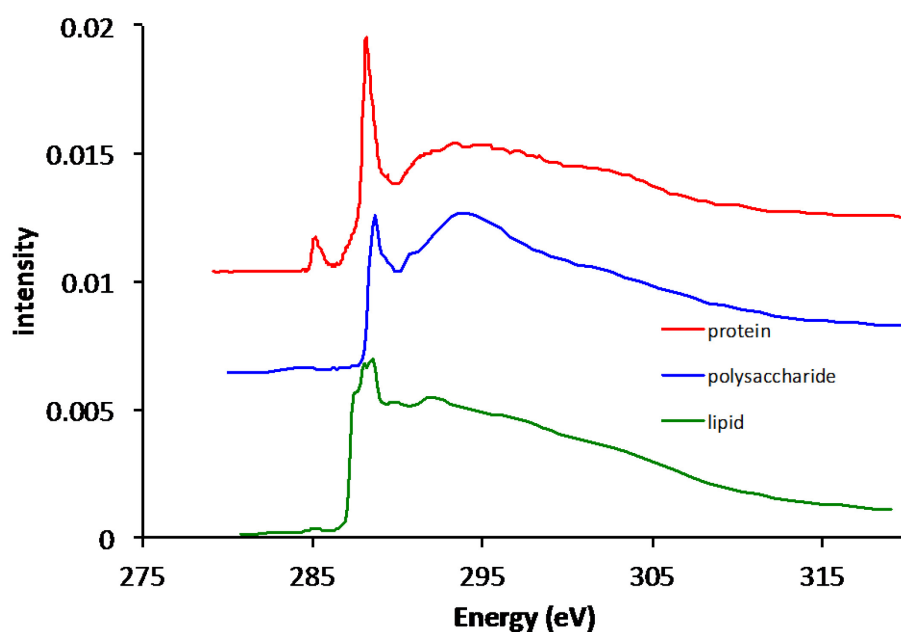
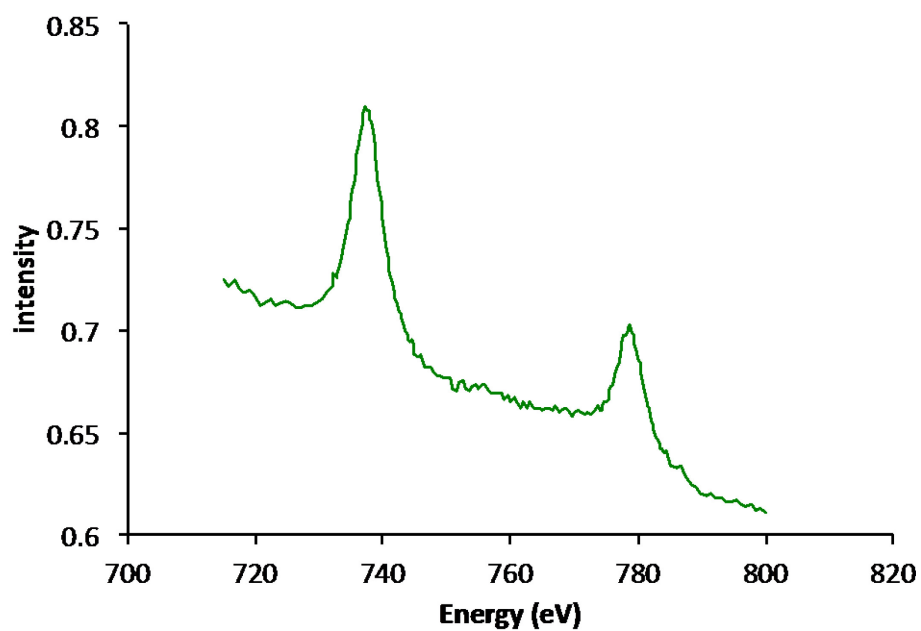


Figure S3. Reference spectrum for uranium as UO_2Cl_2 .

© 2014 by the authors; licensee MDPI, Basel, Switzerland. This article is an open access article distributed under the terms and conditions of the Creative Commons Attribution license (<http://creativecommons.org/licenses/by/3.0/>).