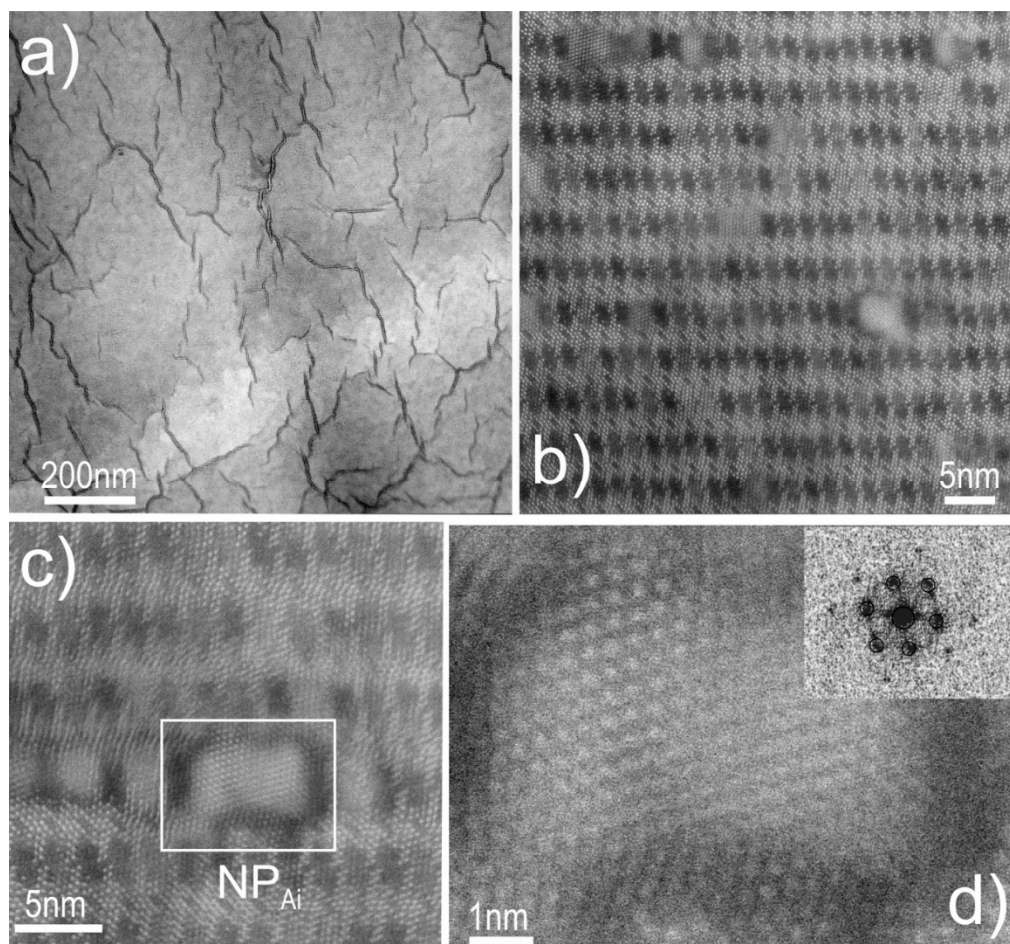


# Supplementary Materials: Focused Ion Beam and Advanced Electron Microscopy for Minerals: Insights and Outlook from Bismuth Sulphosalts

Cristiana L. Ciobanu, Nigel J. Cook, Christian Maunders, Benjamin P. Wade and Kathy Ehrig



**Figure S1.** HAADF STEM images showing further aspects of the replacement of neyite by aikinite in area (ii) of foil2 (Figure 6h). **(a)** Anastomosed nanometre-size veining; **(b)** Abundant NPs of aikinite onto (111)<sub>Pbs</sub> slabs in neyite; note their rounded shape; **(c)** Congregation of aikinite NPs showing incipient formation of a 'vein'; note the local distortion along the contacts with host neyite; **(d)** Detail of area marked by white rectangle in (c), showing a close-up of the atomic arrangement in one of the larger NPs. Inset shows FFT obtained from this area corresponding to indexing on [11-1] zone axis in aikinite as in Figure 14b (inset).



© 2016 by the authors; licensee MDPI, Basel, Switzerland. This article is an open access article distributed under the terms and conditions of the Creative Commons by Attribution (CC-BY) license (<http://creativecommons.org/licenses/by/4.0/>).