

Table S1. The hemostatic profile analysis of pre/post treatment TFPI activity, TFPI antigen and TF antigen in respect to clinicopathological features.

Variables of interest	Pre-treatment TFPI activity [U/mL] <i>p</i> -value	Post-treatment TFPI activity [U/mL] <i>p</i> -value	<i>p</i> -value*	Pre-treatment TFPI antigen [ng/mL] <i>p</i> -value	Post-treatment TFPI antigen [ng/mL] <i>p</i> -value	<i>p</i> -value**	Pre-treatment TF antigen [ng/mL] <i>p</i> -value	Post-treatment TF antigen [ng/mL] <i>p</i> -value	<i>p</i> -value***
Age	1.32	1.72		40.68	42.93		581.87	837.69	
< 56 years	1.10/1.50	1.30/1.96	0.0077	33.40/46.44	33.71/52.76	0.2116	400.86/752.35	689.43/999.12	0.0001
≥ 56 years	1.30	1.70		48.24	42.77		500.39	789.00	
	1.16/1.48	1.12/2.20	0.0155	41.00/60.32	38.54/52.48	0.3575	402.49/596.73	642.06/973.34	<0.0001
	<i>p</i> =0.7324	<i>p</i> =0.8877		<i>p</i> = 0.0052	<i>p</i> =0.5132		<i>p</i> =0.2039	<i>p</i> =0.8063	
Menopausal status	1.39	1.75		42.36	44.30		579.64	827.41	
pre-menopause	1.28/1.56	1.56/2.08	0.0258	31.96/46.44	33.71/46.53	0.1240	431.59/752.35	594.88/1002.42	0.0076
post-menopause	1.28	1.64		45.86	42.65		521.26	815.96	
	1.14/1.46	1.10/2.10	0.0045	39.48/60.16	38.13/53.46	0.5299	400.94/686.50	660.92/973.34	<0.0001
	<i>p</i> =0.2901	<i>p</i> =0.4899		<i>p</i> =0.0934	<i>p</i> =0.6061		<i>p</i> =0.3869	<i>p</i> =0.8544	
Body mass index	1.31	1.70		40.86	42.22		551.95	805.96	
BMI ≤ 24.99 kg/m ²	1.20/1.50	0.90/1.96	0.0641	35.04/48.24	33.01/47.86	0.6435	402.49/718.7	671.43/973.34	<0.0001
BMI ≥ 25 kg/m ²	1.31	1.72		48.02	44.30		552.70	842.45	
	1.1/1.48	1.42/2.20	0.0026	40.68/61.88	39.16/52.76	0.4653	400.94/726.12	642.06/1002.68	<0.0001
	<i>p</i> =0.5393	<i>p</i> =0.5058		<i>p</i> = 0.0467	<i>p</i> =0.1958		<i>p</i> =0.9528	<i>p</i> =0.7338	
Parity status	1.24	1.30		40.98	37.93		597.19	785.1	
0	1.16/1.4	0.90/2.20	0.7532	31.96/50.4	33.71/42.16	0.7532	521.76/724.55	671.43/890.45	0.0747
1-2	1.30	1.74		44.04	42.93		565.46	837.69	
3 and more	1.14/1.46	1.40/2.08	0.0004	37.64/55.76	38.39/52.76	0.8105	402.49/726.12	660.85/973.34	<0.0001
	1.42	1.70		47.68	44.84		500.39	774.18	
	1.16/1.58	1.10/1.96	0.2489	40.68/61.88	35.44/52.48	0.2489	392.64/554.97	660.92/1022.32	0.0030
	<i>p</i> =0.5062	<i>p</i> =0.8238		<i>p</i> =0.3091	<i>p</i> =0.5423		<i>p</i> =0.4857	<i>p</i> =0.9686	
Smoking status	1.42	1.82		44.04	46.51		596.73	874.53	
Smokers	1.2/1.58	1.48/2.38	0.0168	38.00/55.76	42.53/52.76	0.5228	400.86/774.32	660.92/985.32	0.0006
Non-smokers	1.28	1.68		44.48	41.91		539.93	800.00	
	1.12/1.46	1.10/2.00	0.0078	37.64/58.80	33.71/52.48	0.4688	431.59/649.85	660.85/999.12	<0.0001
	<i>p</i> =0.1864	<i>p</i> =0.2752		<i>p</i> =0.8311	<i>p</i> =0.1116		<i>p</i> =0.4755	<i>p</i> =0.5170	
Tumour localization	1.38	1.92		46.44	43.23		554.97	756.30	
Left breast	1.26/1.58	1.4/2.38	0.0066	40.12/60.32	38.54/52.76	0.5178	400.94/686.50	615.39/999.12	0.0001
Right breast	1.20	1.56		43.00	42.16		550.43	866.51	
	1.12/1.40	1.12/1.08	0.0190	35.04/50.80	33.76/51.59	0.7213	402.49/726.12	689.43/985.32	<0.0001
	<i>p</i> = 0.0411	<i>p</i> =0.1711		<i>p</i> =0.1135	<i>p</i> =0.4075		<i>p</i> =0.7843	<i>p</i> =0.2059	

	1.30	1.74		44.04	43.23		550.43	822.71	
Histological type	1.12/1.48	1.12/2.20	0.0003	38.00/58.80	37.87/56.46	0.9701	392.64/654.26	660.92/985.32	<0.0001
IDC	1.26/1.60	1.68		44.48	42.53		686.50	884.08	
ILC	<i>p</i> =0.1991	1.18/1.76	0.5940	35.60/50.40	35.44/45.66	0.4413	520.76/728.94	642.06/1002.68	0.0506
		<i>p</i> =0.3461		<i>p</i> =0.7561	<i>p</i> =0.4315		<i>p</i> =0.2636	<i>p</i> =0.7719	
	1.32	1.60		44.48	42.61		554.97	831.91	
Histological grade	1.16/1.56	1.10/2.00	0.0194	37.12/55.76	33.76/52.48	0.7190	402.49/726.12	660.85/1002.42	<0.0001
G1 + G2	1.28	1.96		43.44	46.50		474.14	800.00	
G3	0.84/1.42	1.76/2.52	0.0046	40.28/58.80	39.16/52.76	0.7007	386.02/592.28	712.42/847.20	0.0107
	<i>p</i> =0.1811	<i>p</i>=0.0342		<i>p</i> =0.8929	<i>p</i> =0.4091		<i>p</i> =0.4897	<i>p</i> =0.6154	
	1.34	1.72		44.48	42.28		539.93	774.18	
cT category (7th ed.)	1.12/1.60	1.02/2.20	0.0171	38.00/50.80	36.06/56.46	0.8741	402.49/724.55	615.39/1002.68	<0.0001
T1	1.30	1.70		44.16	43.76		562.47	837.69	
T2	1.16/1.42	1.18/1.96	0.0032	37.64/60.36	38.54/49.00	0.8552	400.94/654.26	738.68/900.71	0.0001
	<i>p</i> =0.4889	<i>p</i> =0.8255		<i>p</i> =0.7611	<i>p</i> =0.9273		<i>p</i> =0.9818	<i>p</i> =0.7727	
	1.34	1.58		43.74	42.92		505.96	805.96	
cN category (7th ed.)	1.16/1.56	0.90/1.96	0.0482	39.08/60.16	37.87/51.59	0.6392	392.64/686.50	655.33/985.32	<0.0001
N0	1.21	1.81		45.80	42.85		594.51	865.64	
N1	1.12/1.46	1.56/2.52	0.0007	32.24/55.00	36.06/58.16	0.6475	500.39/728.94	691.40/1121.33	0.0012
	<i>p</i> =0.2796	<i>p</i>=0.0405		<i>p</i> =0.7839	<i>p</i> =0.9550		<i>p</i> =0.1050	<i>p</i> =0.3881	
	1.39	1.48		42.68	42.39		459.23	743.30	
cStage (7th ed.)	1.05/1.61	0.70/2.15	0.3037	38.54/50.02	36.66/54.47	0.9544	386.02/721.63	603.96/1002.55	0.0004
IA	1.29	1.76		45.56	43.08		564.71	834.90	
IIA+IIB	1.15/1.44	1.47/2.07	0.0001	36.84/60.26	37.23/52.18	0.8137	435.58/690.19	690.42/925.19	<0.0001
	<i>p</i> =0.3340	<i>p</i> =0.1047		<i>p</i> =0.5312	<i>p</i> =0.9459		<i>p</i> =0.2515	<i>p</i> =0.6782	
	1.29	1.64		44.58	42.65		556.45	815.96	
Molecular subtype	1.14/1.58	1.30/2.00	0.0225	38.00/50.80	35.44/48.85	0.5214	402.49/728.94	642.06/985.32	<0.0001
Luminal A	1.34	1.87		42.90	44.80		538.37	827.41	
Non-luminal A	1.14/1.42	1.10/1.38	0.0046	37.64/61.88	38.93/56.46	0.7702	392.64/654.26	691.40/999.12	0.0001
	<i>p</i> =0.7540	<i>p</i> =0.2761		<i>p</i> =0.6871	<i>p</i> =0.3435		<i>p</i> =0.6926	<i>p</i> =0.9940	
	1.28	1.50		44.68	42.16		550.43	831.91	
Proliferation marker	1.16/1.5	0.76/1.96	0.1587	38.00/55.00	33.71/47.86	0.2953	400.94/726.12	660.85/1002.68	<0.0001
expression	1.36	1.94		42.36	46.99		554.97	822.71	
Ki67 < 20%	1.10/1.48	1.68/2.52	0.0003	37.64/61.88	41.41/56.46	0.3392	439.56/581.87	691.40/890.45	0.0005
Ki67 ≥ 20%	<i>p</i> =0.9938	<i>p</i>=0.0042		<i>p</i> =0.9198	<i>p</i> =0.0546		<i>p</i> =0.7982	<i>p</i> =0.6756	

TFPI: Tissue factor pathway inhibitor; TF: Tissue factor; IDC: Invasive ductal carcinoma; ILC: Invasive lobular carcinoma; G1: low grade; G2: intermediate grade; G3: high grade; T1: tumor diameter ≤ 2 cm; T2: tumor diameter > 2 cm to ≤ 5 cm; N0: lack of lymph node metastases; N1: spread to axillary lymph nodes; ER: oestrogen receptor; PR: progesterone receptor; HER2: human epidermal growth factor receptor 2; Ki67: proliferation marker; BCS: breast-conserving surgery; MRM: modified radical mastectomy. Data are expressed as median (Me) and the inter-quartile range (IQR) [lower quartile (Q1)/upper quartile (Q3)]; *p*-value* for differences between pre-treatment and post-treatment TFPI activity; *p*-value** for differences between pre-treatment and post-treatment TFPI antigen; *p*-value*** for differences between pre-treatment and post-treatment TF antigen; significant differences are denoted by bold *p*-values.

Table S2. The hemostatic profile analysis of pre/post treatment TF activity, t-PA antigen and PAI-1 antigen in respect to clinicopathological features.

Variables of interest	Pre-treatment TF activity [U/mL] <i>p</i> -value	Post-treatment TF activity [U/mL] <i>p</i> -value	<i>p</i> -value*	Pre-treatment t-PA antigen [ng/mL] <i>p</i> -value	Post-treatment t-PA antigen [ng/mL] <i>p</i> -value	<i>p</i> -value**	Pre-treatment PAI-1 antigen [ng/mL] <i>p</i> -value	Post-treatment PAI-1 antigen [ng/mL] <i>p</i> -value	<i>p</i> -value***
Age	13.88	18.64	0.1128	5.30	3.13	0.0003	38.56	77.05	0.0004
< 56 years	11.62/29.88	11.20/38.53		4.23/6.87	1.79/4.21		27.73/49.60	44.20/84.33	
≥ 56 years	11.86	27.69		6.16	3.01		37.19	79.20	
	10.42/25.88	12.76/34.09		4.30/7.16	2.05/5.91		30.30/44.46	49.87/85.97	
	<i>p</i> =0.1935	<i>p</i> =0.7437		<i>p</i> =0.5037	<i>p</i> =0.3806		<i>p</i> =0.5424	<i>p</i> =0.3231	
Menopausal status	13.46	16.78	0.0962	5.20	2.55	0.0186	36.83	81.20	0.0015
pre-menopause	10.61/23.59	11.22/32.97		4.23/7.72	2.02/4.21		26.42/49.60	47.33/85.08	
post-menopause	12.605	27.84		5.84	3.21		38.23	77.48	
	11.17/29.59	12.76/37.68		4.28/7.12	1.98/4.96		30.30/44.97	49.1/85.97	
	<i>p</i> =0.7864	<i>p</i> =0.4736		<i>p</i> =0.9234	<i>p</i> =0.4682		<i>p</i> =0.8339	<i>p</i> =0.7731	
Body mass index	13.65	26.15	0.0041	5.26	2.85	0.0014	37.03	55.30	0.0024
BMI ≤ 24.99 kg/m ²	11.62/29.59	12.12/37.68		4.14/6.7	2.18/4.96		27.73/45.48	45.96/79.31	
BMI ≥ 25 kg/m ²	12.085	27.41		6.10	3.21		38.54	82.05	
	10.03/23.31	11.18/34.09		4.34/7.25	1.87/4.94		30.3/45.3	73.27/87.71	
	<i>p</i> =0.1714	<i>p</i> =0.5542		<i>p</i> =0.2804	<i>p</i> =0.8418		<i>p</i> =0.9176	<i>p</i> =0.0021	
Parity status	17.705	28.16	0.1159	6.065	3.4	0.1730	33.48	54.03	0.0277
0	12.31/39.16	13.17/43.56		3.86/8.82	2.18/6.42		22.66/40.00	45.96/78.15	
1-2	12.75	17.91		5.3	2.69		38.52	79.31	
3 and more	10.61/24.17	11.22/33.11		4.30/6.86	1.98/4.21		30.27/47.43	49.1/84.65	
	12.46	27.99	0.0028	6.13	4.21	0.3109	37.9	78.46	0.0015
	11.47/33.47	20.3/38.1		4.2/7.16	2.05/6.99		33.7/45.3	49.48/87.58	
	<i>p</i> =0.4813	<i>p</i> =0.4918		<i>p</i> =0.9310	<i>p</i> =0.4127		<i>p</i> =0.5833	<i>p</i> =0.4811	
Smoking status	11.77	27.13	0.0395	6.66	3.28	0.0217	35.50	79.20	0.0049
Smokers	9.81/23.59	16.10/34.09		4.30/7.16	2.68/4.21		33.70/42.73	49.10/87.58	
Non-smokers	13.60	27.13		5.48	2.67		38.52	78.15	
	11.17/29.59	11.18/37.68		4.23/7.12	1.78/5.02		28.10/47.43	47.70/84.65	
	<i>p</i> =0.4704	<i>p</i> =0.4908		<i>p</i> =0.3091	<i>p</i> =0.1893		<i>p</i> =0.7182	<i>p</i> =0.7803	
Tumour localization	11.77	27.99	0.0011	5.96	3.13	0.0007	42.73	79.44	0.0001
Left breast	10.03/29.59	12.12/38.53		4.28/7.16	2.02/4.96		33.96/49.82	49.1/85.08	
Right breast	13.70	18.64		5.30	2.69		35.12	73.27	
	12.31/25.88	11.20/33.45		4.14/7.12	1.98/4.55		24.18/40.44	47.33/85.29	

	<i>p</i> =0.2485	<i>p</i> =0.4201		<i>p</i> =0.9410	<i>p</i> =0.8244		<i>p</i>=0.0210	<i>p</i> =0.4074	
Histological type	13.16	27.13	0.0011	5.87	3.34	0.0001	39.39	79.31	<0.0001
IDC	10.61/29.59	12.06/38.53		4.30/7.16	2.02/5.09		32.37/47.36	49.87/86.65	
ILC	12.31	27.13	0.1097	4.83	2.31	0.0077	28.10	47.70	0.0077
	11.80/21.31	11.22/32.97		3.86/6.16	1.78/2.57		22.66/32.37	45.96/79.20	
	<i>p</i> =0.8684	<i>p</i> =0.5551		<i>p</i> =0.2380	<i>p</i>=0.0193		<i>p</i>=0.0199	<i>p</i> =0.0857	
Histological grade	12.46	25.17	0.0011	5.69	3.14	0.0001	37.19	77.90	<0.0001
G1 + G2	10.61/26.92	12.06/37.68		4.207.12	2.18/5.09		27.73/44.97	46.21/85.97	
G3	14.18	27.69	0.1159	5.71	2.31	0.0046	40.44	81.25	0.0019
	11.86/24.17	10.13/31.99		5.10/7.25	1.98/3.95		30.30/49.06	72.58/84.33	
	<i>p</i> =0.4091	<i>p</i> =0.7672		<i>p</i> =0.8225	<i>p</i> =0.2363		<i>p</i> =0.3237	<i>p</i> =0.3746	
cT category (7th ed.)	12.31	27.13	0.0030	5.26	2.67	0.0001	38.56	74.69	0.0001
T1	11.47/24.17	12.76/34.09		4.23/6.34	1.66/4.21		27.73/47.36	47.70/84.33	
T2	13.70	27.13	0.0416	6.44	3.58	0.0074	37.20	79.20	0.0001
	9.02/29.59	11.22/42.63		4.55/7.78	2.49/6.99		32.37/44.60	60.72/87.12	
	<i>p</i> =0.8433	<i>p</i> =0.8672		<i>p</i> =0.1246	<i>p</i> =0.0704		<i>p</i> =0.9939	<i>p</i> =0.3420	
cN category (7th ed.)	12.61	27.84	0.0009	5.70	3.31	0.0012	37.73	78.18	<0.0001
N0	10.61/24.17	12.12/38.53		4.23/7.38	2.05/5.02		28.10/47.36	49.48/85.29	
N1	13.52	17.51	0.1701	5.68	2.64	0.0003	37.88	76.68	0.0002
	11.77/29.88	11.20/32.97		4.83/6.34	1.98/4.21		30.30/45.30	46.21/84.65	
	<i>p</i> =0.5398	<i>p</i> =0.2870		<i>p</i> =0.8909	<i>p</i> =0.2981		<i>p</i> =0.8339	<i>p</i> =0.8026	
cStage (7th ed.)	12.06	29.09	0.0018	4.92	2.98	0.0119	36.70	76.30	0.0066
IA	11.10/23.88	15.41/38.11		4.22/6.76	1.69/4.75		27.92/47.74	48.59/84.71	
IIA+IIB	13.65	17.51	0.0638	6.10	3.07	0.0001	38.04	78.83	<0.0001
	11.12/29.74	11.25/33.77		4.45/7.43	2.18/5.47		31.34/44.95	47.02/85.97	
	<i>p</i> =0.3733	<i>p</i> =0.3897		<i>p</i> =0.1918	<i>p</i> =0.5115		<i>p</i> =0.9579	<i>p</i> =0.7172	
Molecular subtype	12.06	17.87	0.0038	5.19	2.64	0.0001	34.69	79.26	<0.0001
Luminal A	10.03/23.31	11.18/34.09		4.20/7.16	1.98/4.55		27.30/43.77	46.21/85.97	
Non-luminal A	14.59	27.84	0.0490	5.97	3.64	0.0153	40.62	77.60	0.0006
	11.86/39.16	15.65/41.89		4.34/6.87	2.05/5.09		36.46/49.60	49.48/84.33	
	<i>p</i>=0.0119	<i>p</i> =0.1943		<i>p</i> =0.7940	<i>p</i> =0.3667		<i>p</i> =0.0654	<i>p</i> =0.9821	
Proliferation marker expression	12.31	20.30	0.0003	5.26	2.67	<0.0001	35.50	77.90	<0.0001
Ki67 < 20%	10.39/23.31	11.22/34.09		4.14/7.16	1.87/4.55		27.30/44.60	46.21/85.29	
Ki67 ≥ 20%	15.20	27.99	0.2736	6.06	3.69	0.0326	40.80	78.46	0.0019
	11.86/39.16	16.10/39.87		4.34/6.87	2.60/5.09		36.46/49.60	71.24/84.33	
	<i>p</i>=0.0126	<i>p</i> =0.5404		<i>p</i> =0.5611	<i>p</i> =0.1825		<i>p</i> =0.0882	<i>p</i> =0.4293	

TF: Tissue factor; t-PA: Tissue plasminogen activator; PAI-1: Plasminogen activator inhibitor-1; IDC: Invasive ductal carcinoma; ILC: Invasive lobular carcinoma; G1: low grade; G2: intermediate grade; G3: high grade; T1: tumor diameter ≤ 2 cm; T2: tumor diameter > 2 cm to ≤ 5 cm; N0: lack of lymph node metastases; N1: spread to axillary lymph nodes; ER: oestrogen receptor; PR: progesterone receptor; HER2: human epidermal growth factor receptor 2; Ki67: proliferation marker; BCS: breast-conserving surgery; MRM: modified radical mastectomy. Data are expressed as median (Me) and the inter-quartile range (IQR) [lower quartile (Q1)/upper quartile (Q3)]; *p*-value* for differences between pre-treatment and post-treatment TF activity; *p*-value** for differences between pre-treatment and post-treatment t-PA antigen; *p*-value*** for differences between pre-treatment and post-treatment PAI-1 antigen; significant differences are denoted by bold *p*-values.

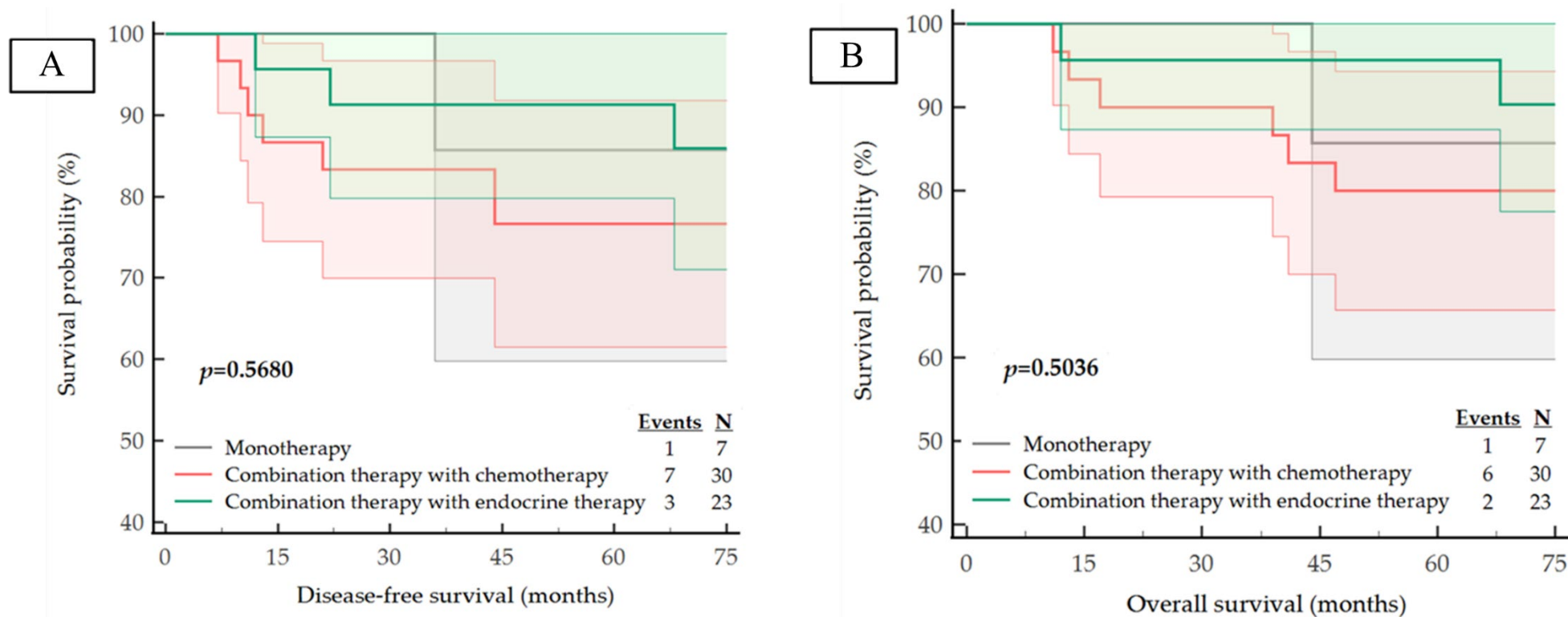


Figure S1. (A) Disease-free survival (DFS) and (B) overall survival (OS) analysis of the studied population regarding types of adjuvant therapy in IBrC patients.