

Supplementary Materials

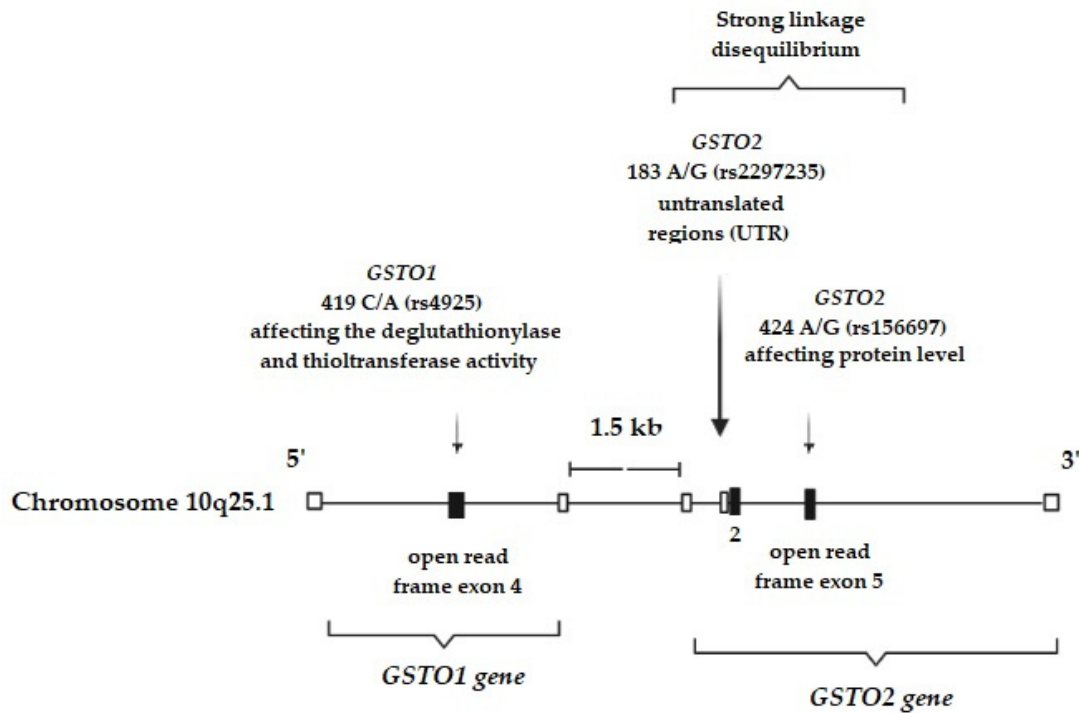


Figure S1. Observation of the investigated polymorphisms in *GSTO1* and *GSTO2* genes indicating the SNPs location and the proposed effects

Table S1. The individual effect of *GSTO1**C419A (rs4925), *GSTO2**A424G (rs156697), and *GSTO2**A183G (rs2297235) polymorphisms on the risk for seminoma development

Genotype	Patients with Seminoma n (%)	Controls n (%)	Crude OR1 ¹ (95% CI)	<i>p</i>	OR2 ² (95% CI)	<i>p</i>
<i>GSTO1</i> rs4925						
*A/A	4 (8)	13 (14)	1.00	-	1.00	-
*C/A*C/C	47 (92)	82 (86)	1.86 (0.57-6.04)	0.300	2.88 (0.83-9.93)	0.094
<i>GSTO2</i> rs156697						
*A/A	16 (33)	50 (52)	1.00	-	1.00	-
*A/G*G/G	33 (67)	46 (48)	2.24 (1.09-4.60)	0.028	2.34 (0.86-6.40)	0.095
<i>GSTO2</i> rs2297235						
*A/A	18 (35)	49 (51)	1.00	-	1.00	-
*A/G*G/G	34 (65)	47 (49)	1.97 (0.98-3.95)	0.057	1.25 (0.46-3.42)	0.657

¹OR1 crude odds ratio; ²OR2 adjusted to the other two remaining genotypes; CI- Confidence interval; 1.00- Reference group.