

Supplementary table and figure

Table S1. Characteristics of acute ischemic stroke patients

	(n=90) N	percentage (%)
Current Smoker	19	21.1
Aspirin	60	66.7
t-PA treatment	21	23.3
Atrial Fibrillation	32	35.6
NIHSS		
Moderate stroke (5-15)	46	51.1
Moderate to severe stroke (16-20)	14	15.6
Severe stroke (≥ 21)	21	23.3
Modified Rankin scale (>3)	69	76.7
Death	11	12.2
TOAST classification		
Large Artery Atherosclerosis	28	31.1
Small artery Atherosclerosis	3	3.3
Cardioembolism	12	13.3
Determined cause	3	3.3
Undetermined cause	11	12.2

t-PA- tissue Plasminogen Activator; NIHSS- National Institutes of Health Stroke Scale

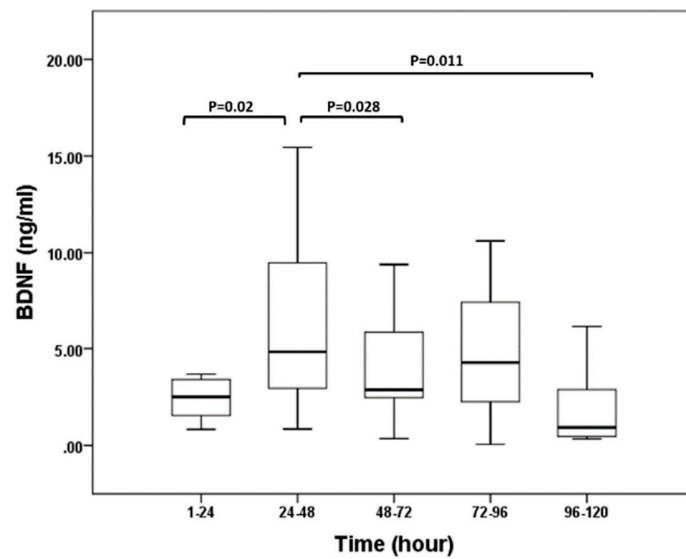


Figure S1. Boxplots of plasma BDNF level and the sampling time categories in acute ischemic stroke patients.

Footnote: 5 missing data of blood sampling time in hours were excluded. One-way ANOVA with sampling time was used ($p=0.044$). Least square difference in hours for multiple comparisons: 1-24 versus 25-48 ($p = 0.020$), 25-48 versus 49-72 ($p = 0.028$), and 97-120 versus 25-48 ($p = 0.011$). others were non-significance.

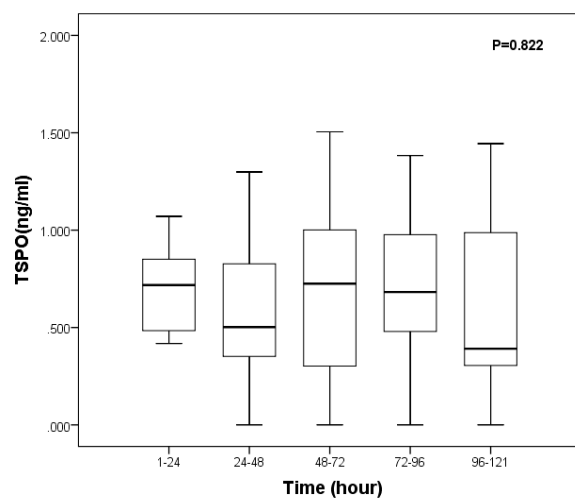


Figure S2. Boxplots of plasma TSPO level and the sampling time categories in acute ischemic stroke patients.

Footnote: 5 missing data of blood sampling time in hours were excluded. One-way ANOVA with sampling time was used ($P=0.822$). all post hoc comparisons were non-significant.