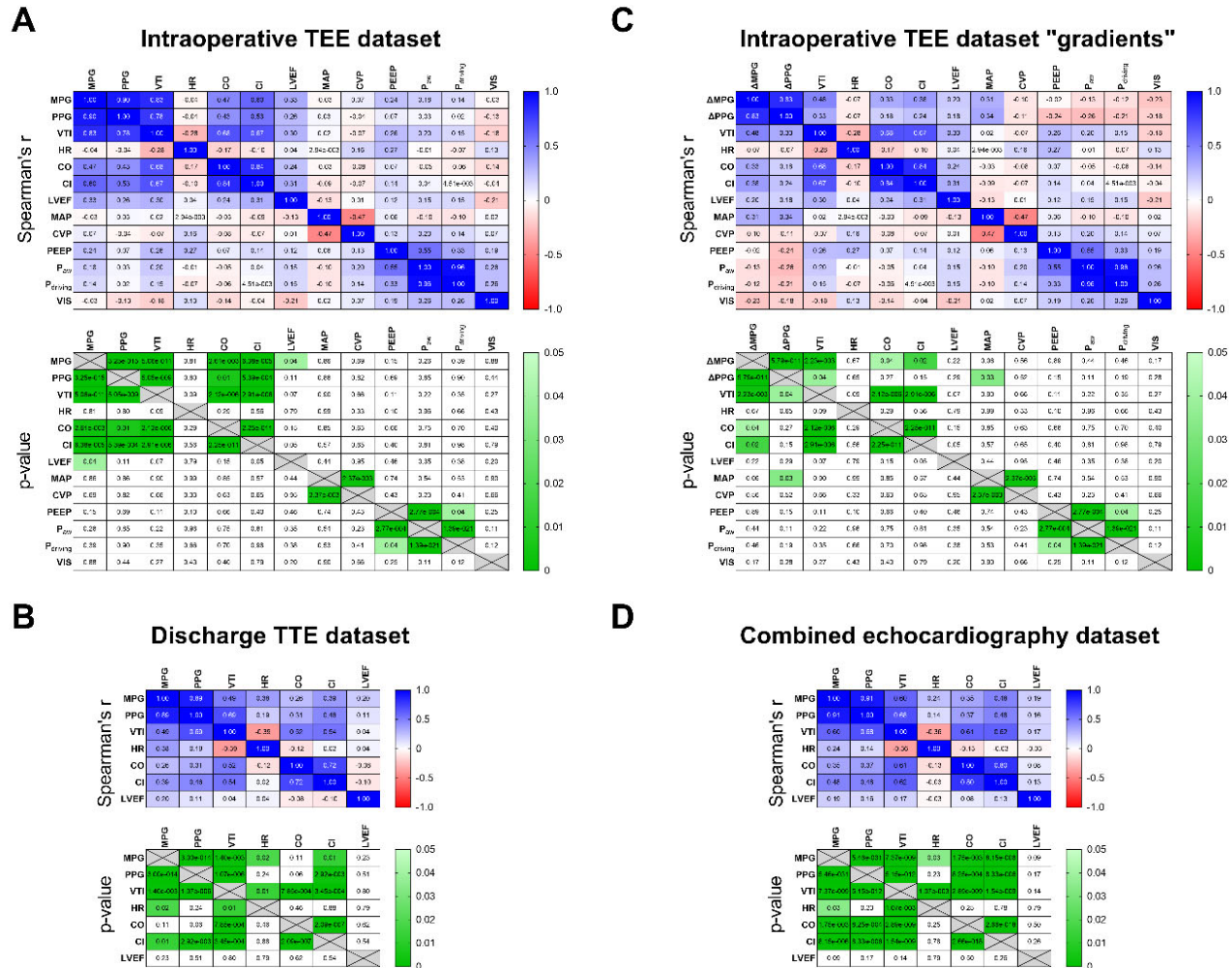


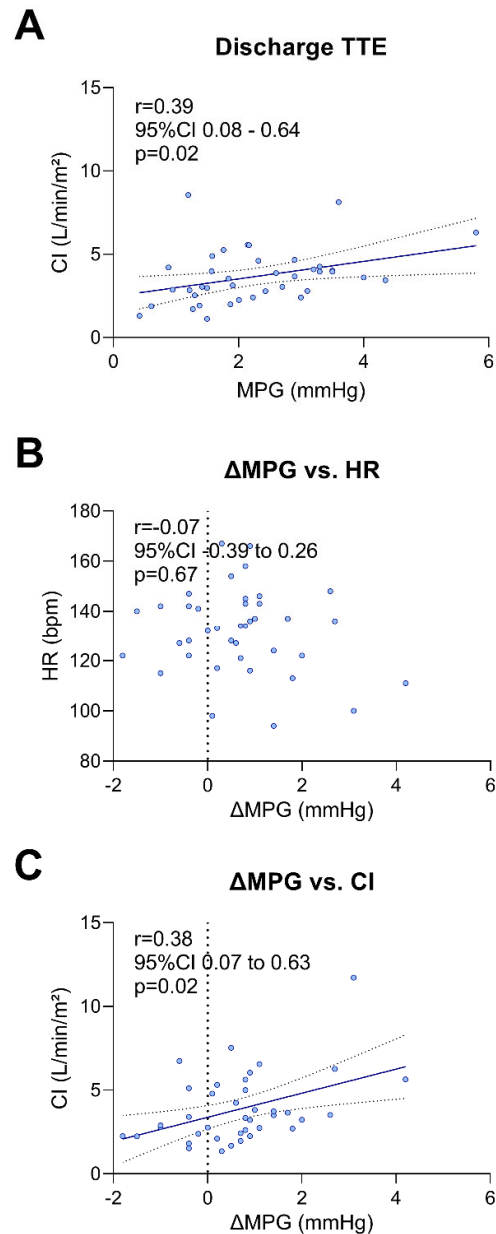
## Supplementary Materials



**Figure S1: Linear correlation matrices of echocardiographic, hemodynamic and ventilation parameters**

Spearman's correlation coefficients ( $r$ ) and corresponding  $p$ -values between the recorded parameters at the time of intraoperative TEE (A) and pre-discharge TTE (B). Intraoperative measures were also correlated with the changes in mean pressure gradient ( $\Delta$ MPG) and peak pressure gradient ( $\Delta$ PPG) between the two echocardiograms (C). The correlation matrix of the combined dataset (intraoperative TEE and pre-discharge TTE) is shown under (D). CI = cardiac index, CO = cardiac output, CVP = central venous pressure, HR = heart rate, LVEF = left ventricular ejection fraction, MAP = mean arterial pressure, MPG =

mean pressure gradient,  $P_{aw}$  = mean airway pressure,  $P_{driving}$  = driving airway pressure, PEEP = positive end-expiratory pressure, PPG = peak pressure gradient, VIS = Vasoactive-Inotropic score, VTI = velocity-time integral.



**Figure S2: Correlation diagrams of the cardiac index (CI) and heart rate (HR) with the mean pressure gradient (MPG) and the change of MPG between the two time-points ( $\Delta$ MPG)**

A weak linear correlation was observed between CI and MPG at the time of transthoracic echocardiography (TTE) prior to discharge (A). Correlation of  $\Delta$ MPG with intraoperative HR (B) and CI (C) revealed no and a weak linear relationship, respectively. 95%CI = 95% confidence interval,  $r$  = Spearman's correlation coefficient.

**Table S1: Follow-up data**

<i><b>Follow-up data</b></i>	
Patients with post-discharge follow-up, n	14 (36)
Median follow-up time, d	789 (255-1,729)
Uneventful course, n	7 (50)
AVSD revision surgery, n	4 (29)
Portal vein thrombosis, n	1 (7)
Cardiopulmonary resuscitation due to seizure-induced hypoxia, n	1 (7)
Post-pericardiotomy syndrome, n	1 (7)
Good physical capacity, n	11 (79)

Values are medians (interquartile ranges) or n (%).

AVSD = atrioventricular septal defect