

Supplementary Materials

Table S1. Full Search Strategy.

PubMed
#1 sepsis"[MeSH Terms] OR "sepsis"[All Fields] OR "septicaemias"[All Fields] OR "septicemias"[All Fields] OR "septicaemia"[All Fields] OR "septicemia"[All Fields]
#2 "bacteraemia"[All Fields] OR "bacteremia"[MeSH Terms] OR "bacteremia"[All Fields] OR "bacteraemias"[All Fields] OR "bacteremias"[All Fields]
#3 "septic"[All Fields] OR "septics"[All Fields]
#4 #1 OR #2 OR #3
#5 ("atrial fibrillation"[MeSH Terms] OR ("atrial"[All Fields] AND "fibrillation"[All Fields])) OR "atrial fibrillation"[All Fields]
#6 #4 AND #5
EMBASE
#1 'sepsis'/exp OR 'sepsis' OR 'septicemia' OR 'bacteremia' OR septic
#2 'atrial fibrillation'
#3 #1 AND #2

Table S2. Bias Assessment—NOS for incidence of new onset Atrial Fibrillation.

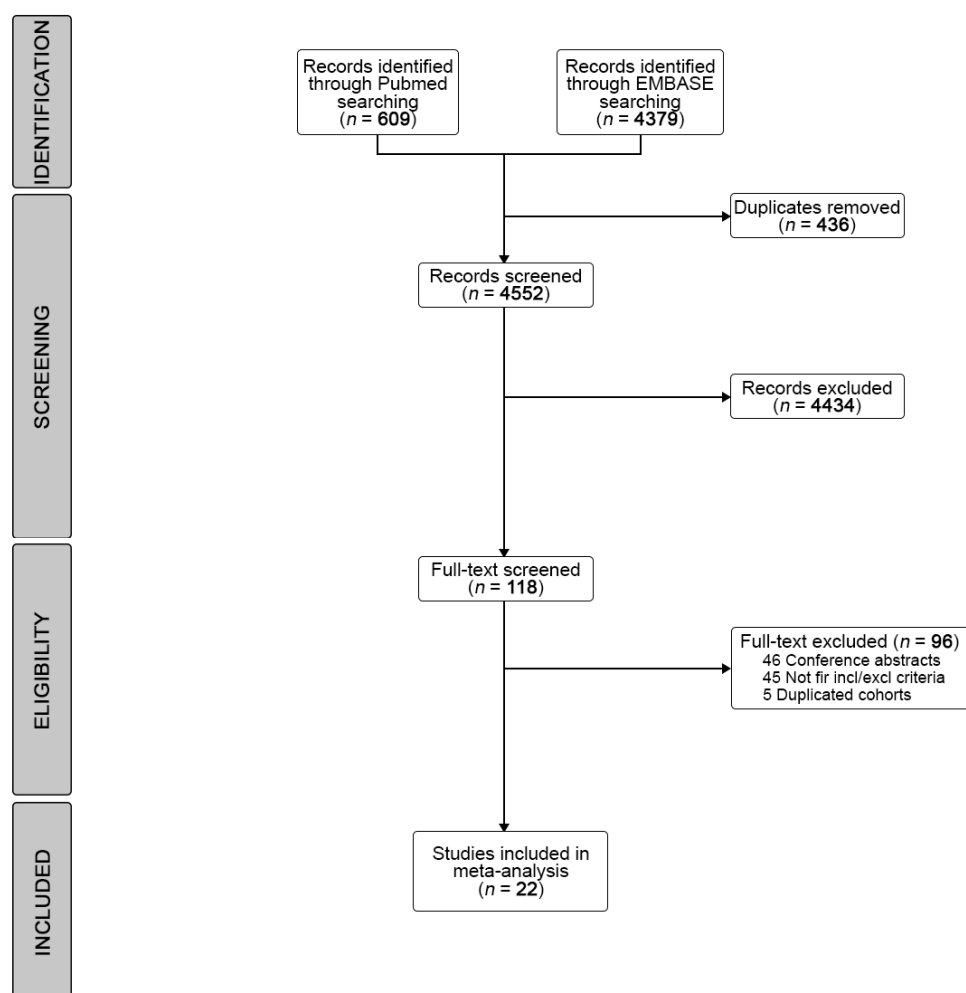
Study	Selection (2)	Comparability (1)	Outcome (2)	Total (5)
Arunachalam 2020* [18]	1	0	1	2
Bosch 2019 [19]	2	1	2	5
Chen 2015* [20]	1	0	1	2
Christian 2008* [21]	2	1	1	4
Fernando 2020* [22]	1	0	1	2
Guenancia 2015** [23]	1	1	2	4
Hayase 2016*,** [24]	1	0	1	2
Klein Klouwenberg 2017 [25]	2	1	2	5
Koyfman 2015* [26]	2	0	1	3
Launey 2019*** [27]	1	1	2	5
Lewis 2016 [28]	2	1	2	5
Liu 2016 [29]	2	1	2	5
Meierhenrich 2010 [30]	1	1	2	4
Moss 2017* [31]	2	1	1	4
Para 2020*,** [32]	0	0	1	1
Personett 2012*,# [33]	2	1	1	4
Salman 2008** [34]	1	1	2	4
Seemann 2015**,# [35]	1	1	1	3
Shaver 2015* [36]	1	1	1	3
Walkey 2014 [37]	2	1	2	5
Walkey 2011# [12]	2	1	1	4
Wieruszewski 2021*,# [38]	1	1	1	3

Legend: *No/missing baseline characteristics/information for the whole cohort of sepsis patients; **Sample size less than 100 patients. ***Selected african/american patients. #Possible bias in definition of noAF NOS = Newcastle-Ottawa Scale.

Table S3. Bias Assessment—NOS for outcomes according to new onset Atrial Fibrillation.

Study	Selection (4)	Comparability (2)	Outcome (3)	Total (9)
Bosch 2019 [19]	4	2	3	9
Chen 2015* [20]	3	0	3	6
Christian 2008* [21]	3	1	3	7
Guenancia 2015 [23]	4	2	3	9
Klein Klouwenberg 2017 [25]	4	2	3	9
Liu 2016 [29]	4	2	3	9
Meierhenrich 2010 [30]	4	1	3	8
Salman 2008 [34]	4	1	3	8
Walkey 2011# [12]	3	2	3	8

Legend: *No/Missing baseline characteristics/informations for sepsis patients; #Possible bias in definition of noAF NOS= Newcastle-Ottawa Scale.

**Figure S1.** PRISMA Flow-Chart of the Study.

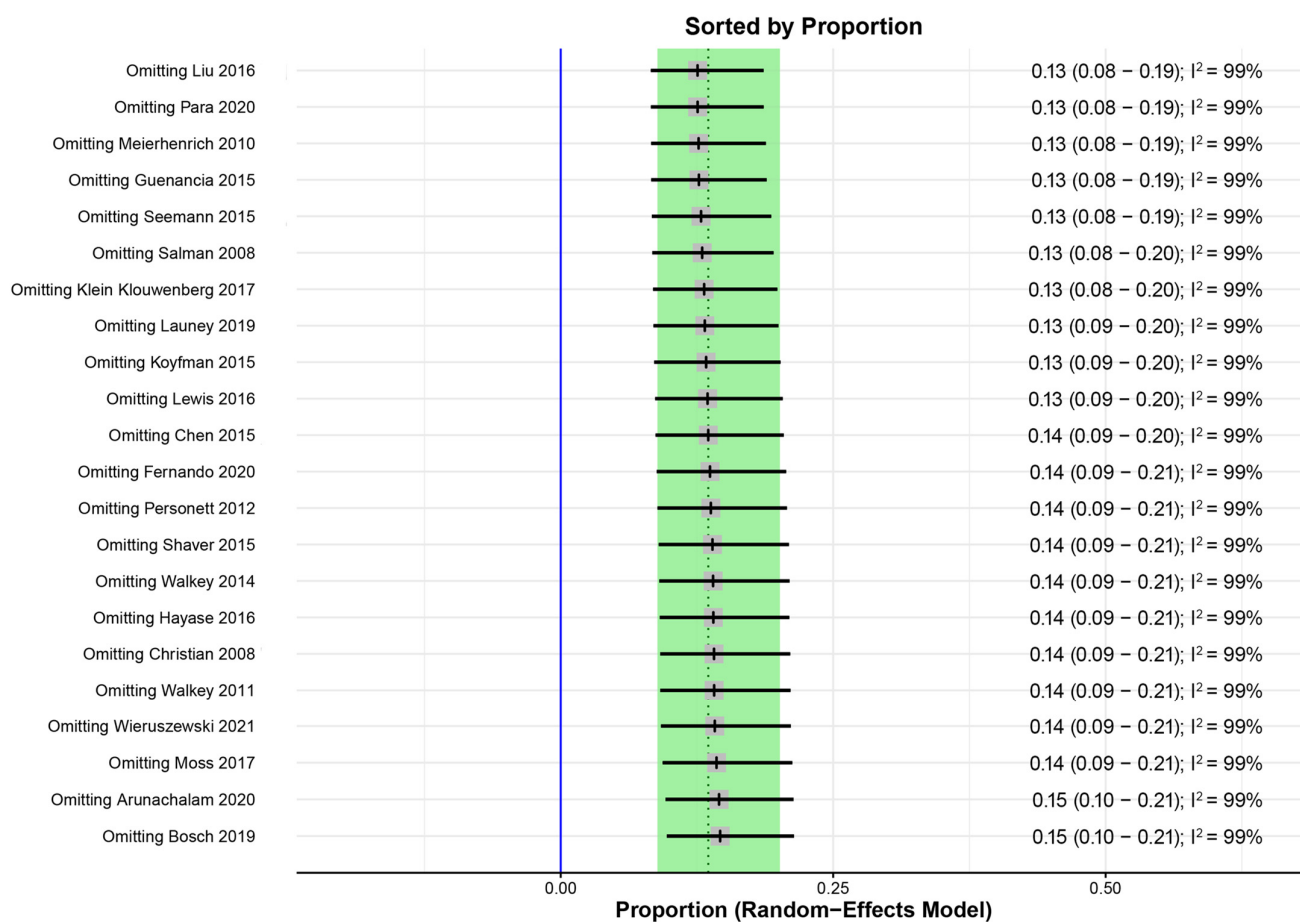


Figure S2. Leave one out analysis for NOAF Prevalence [12,18–38]. Abbreviation: I^2 = inconsistency index.

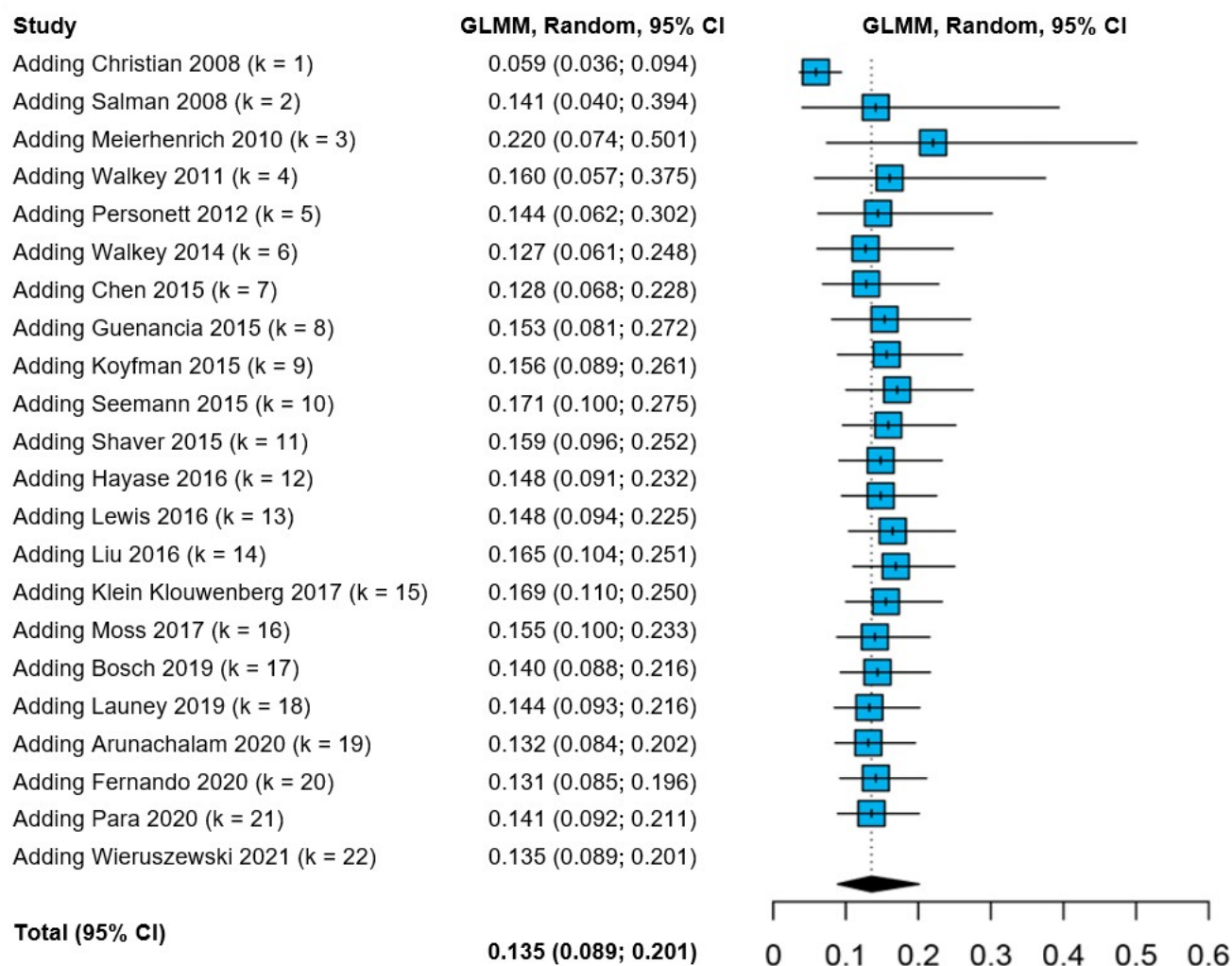


Figure S3. Cumulative Meta-Analysis of Prevalence of NOAF based on Study Publication Year [12,18–38]. Abbreviations: GLMM = generalized linear mixed model; CI = confidence interval.

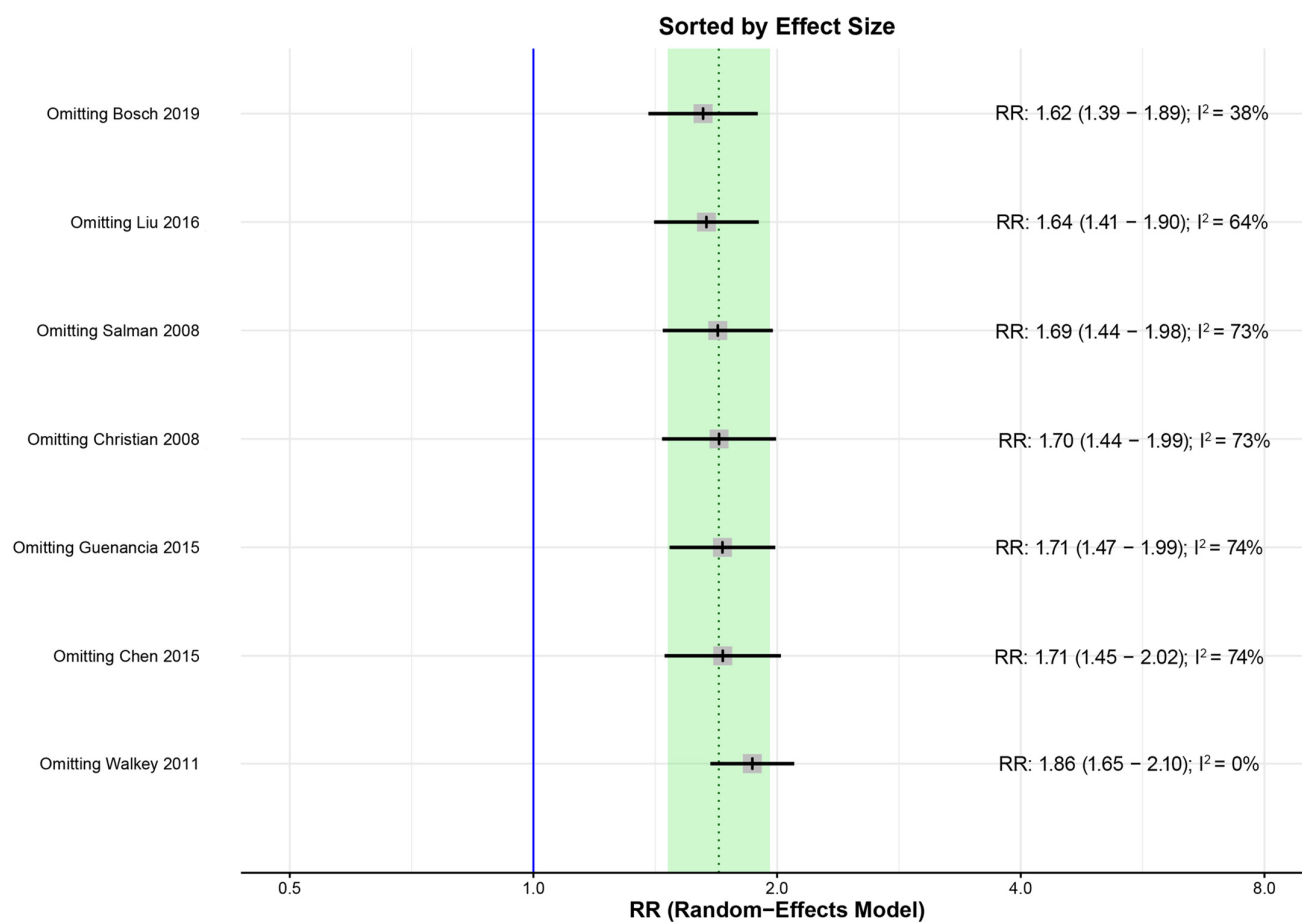


Figure S4. Leave one out analysis for in-hospital mortality according to NOAF [12,19–21,23,29,34]. Abbreviation: I² = inconsistency index, RR = Risk Ratio.

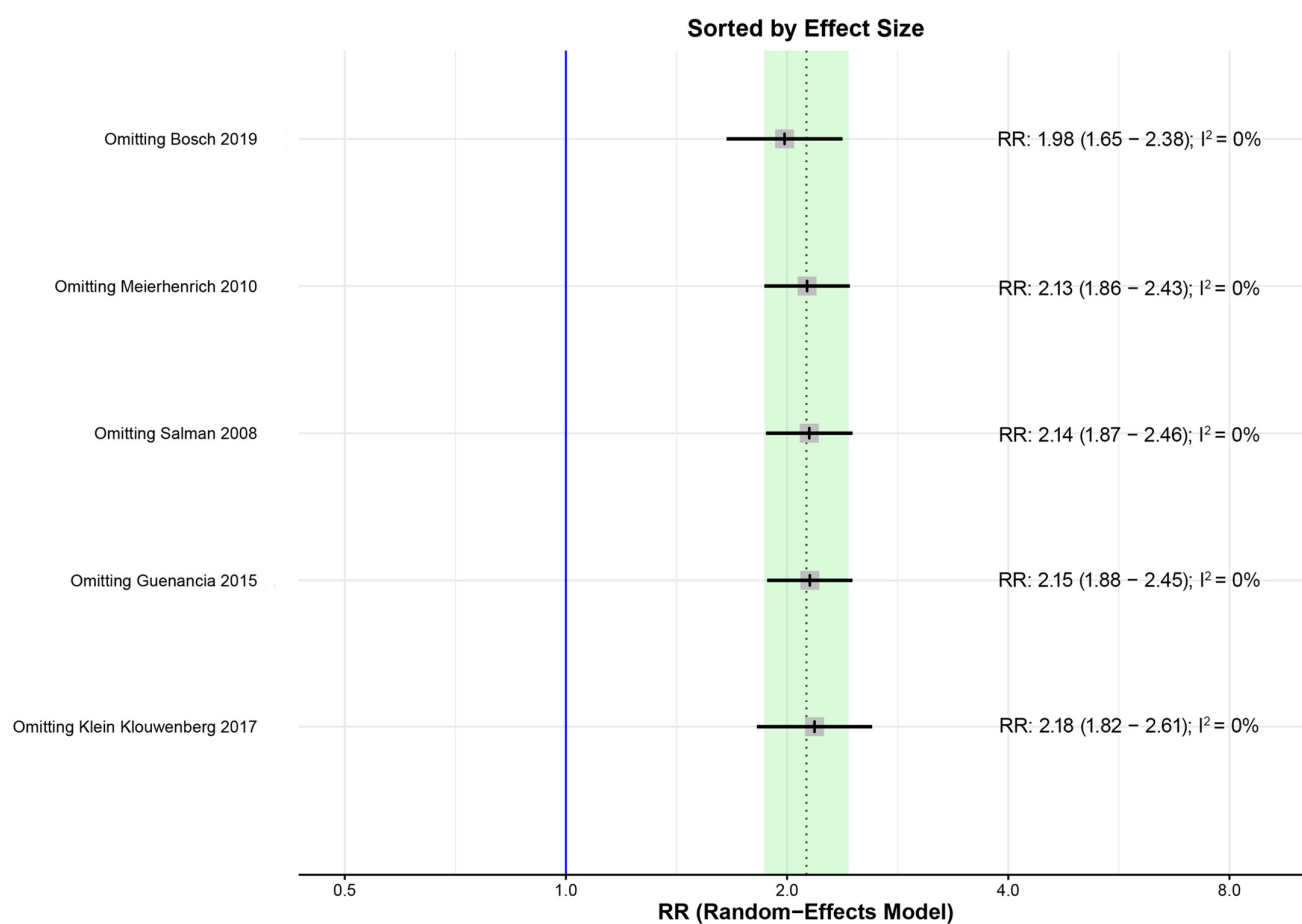


Figure S5. Leave one out analysis for ICU mortality in patients with NOAF [19,23,25,30,34]. Abbreviation: I² = inconsistency index, RR = Risk Ratio.