



Figure S1. Confocal laser micrograph of *Megaphragma longiciliatum* (female from Oman). Blue areas are the least sclerotised and yellow the most strongly sclerotized (Photo A. Polaszek).

Figure S2. Phylogenetic tree of CO1 in ***Megaphragma***, unpartitioned analysis in RAxML-NG, GTR model.

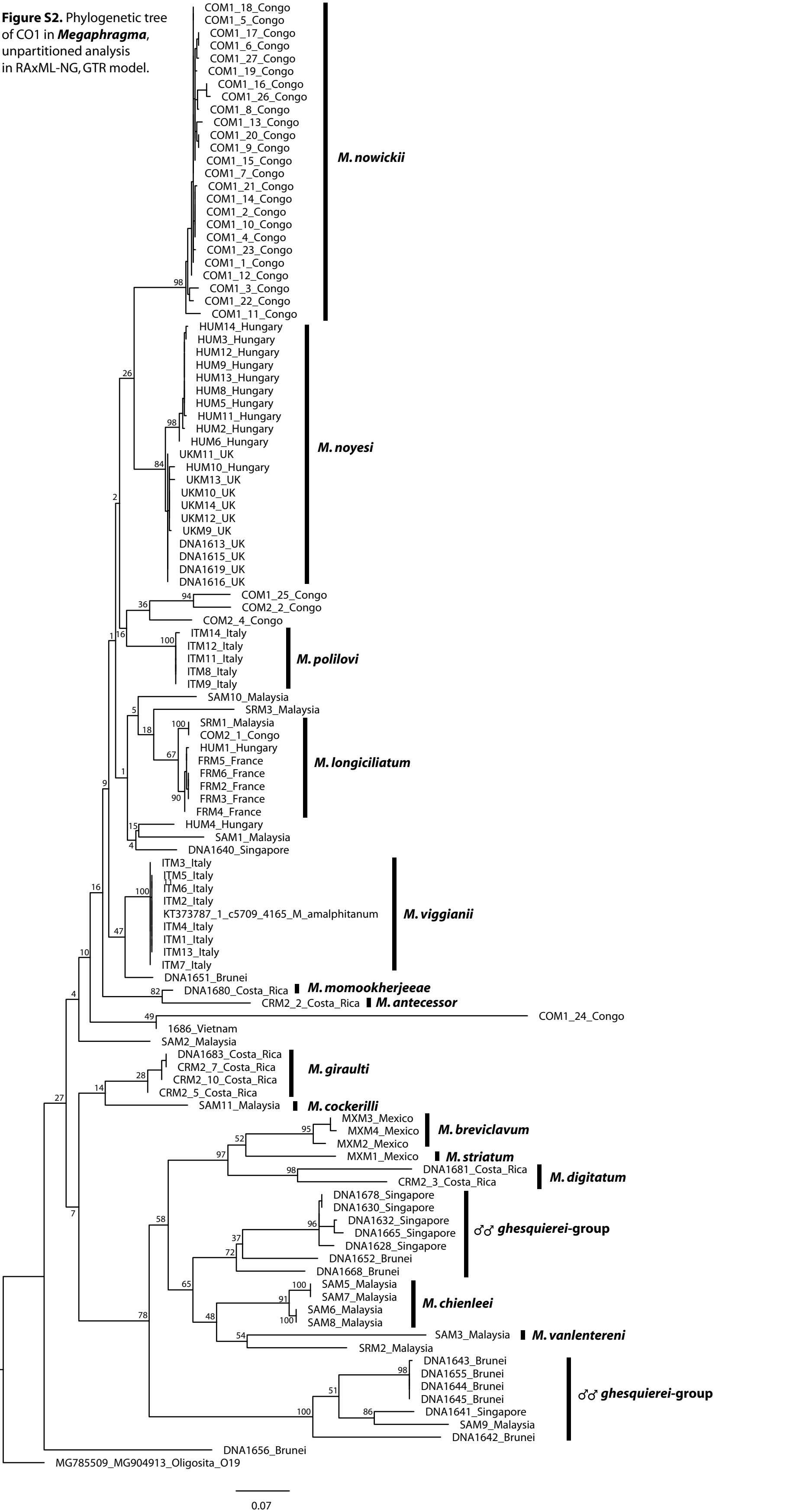
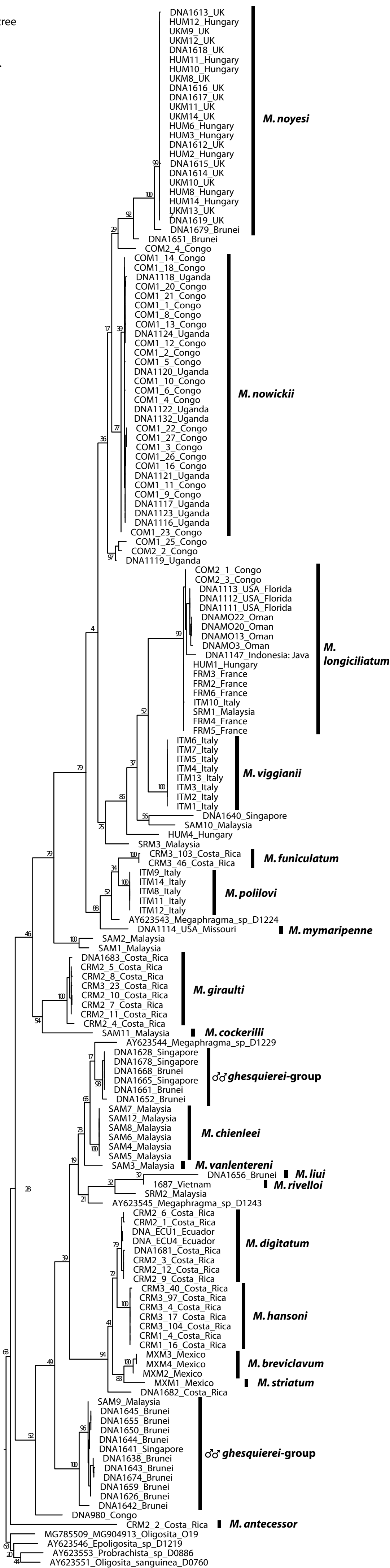


Figure S3. Phylogenetic tree of 28S in *Megaphragma*, unpartitioned analysis in RAxML-NG, K2P model.



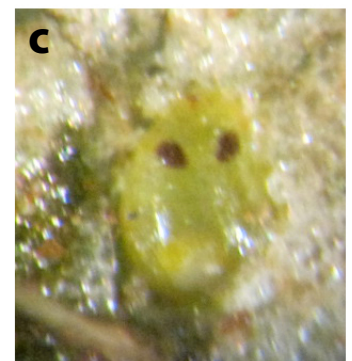
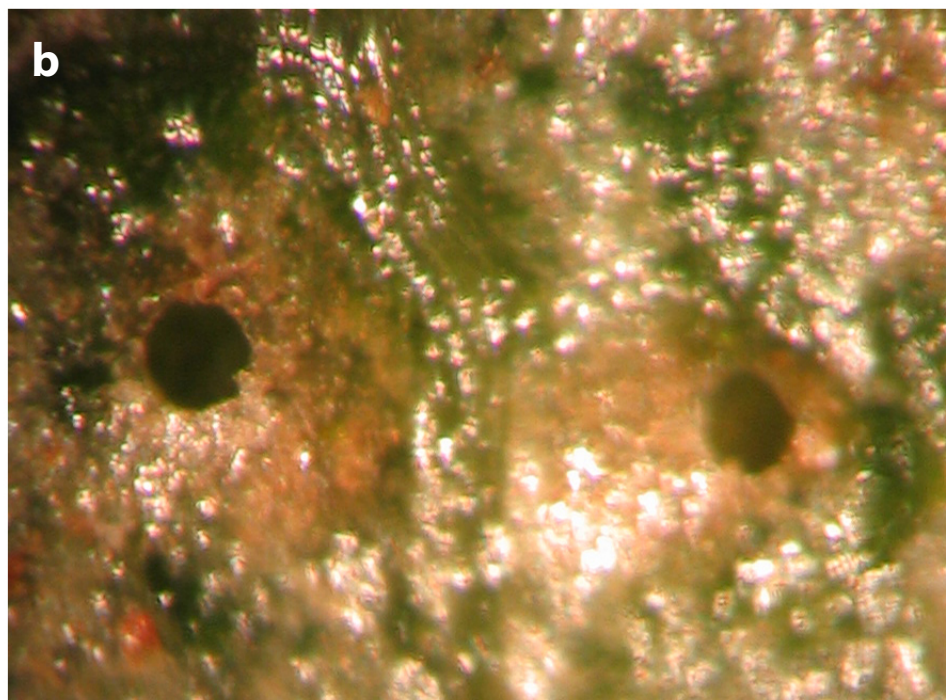


Figure S4: **a** *Heliothrips haemorrhoidalis*, the host of *Megaphragma* sp.,
b eggs of *Heliothrips haemorrhoidalis* with exit hole of *Megaphragma* sp.,
c pupa of *Megaphragma* sp. in egg of *Heliothrips haemorrhoidalis* (Photo G. Viggiani).