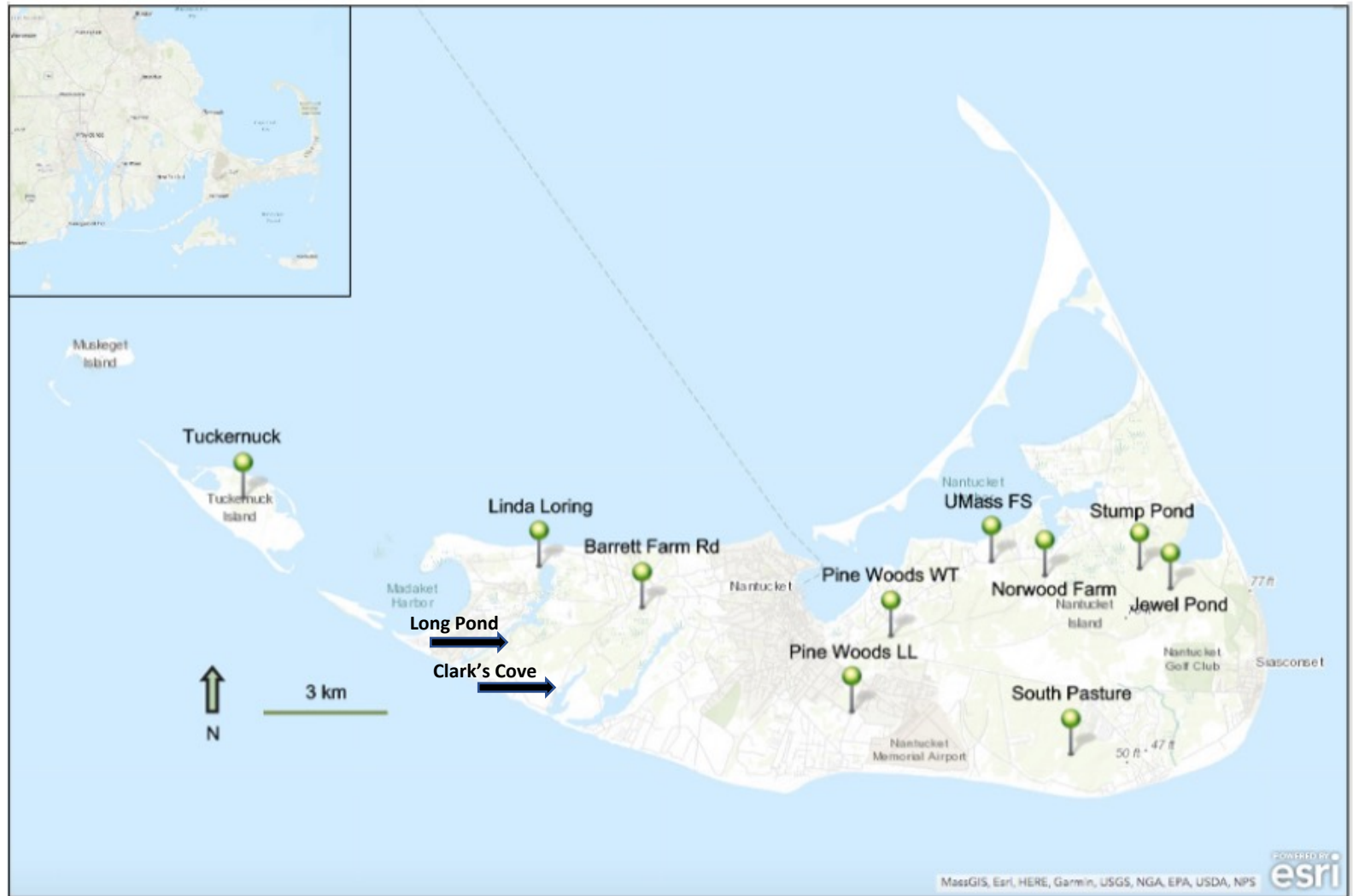
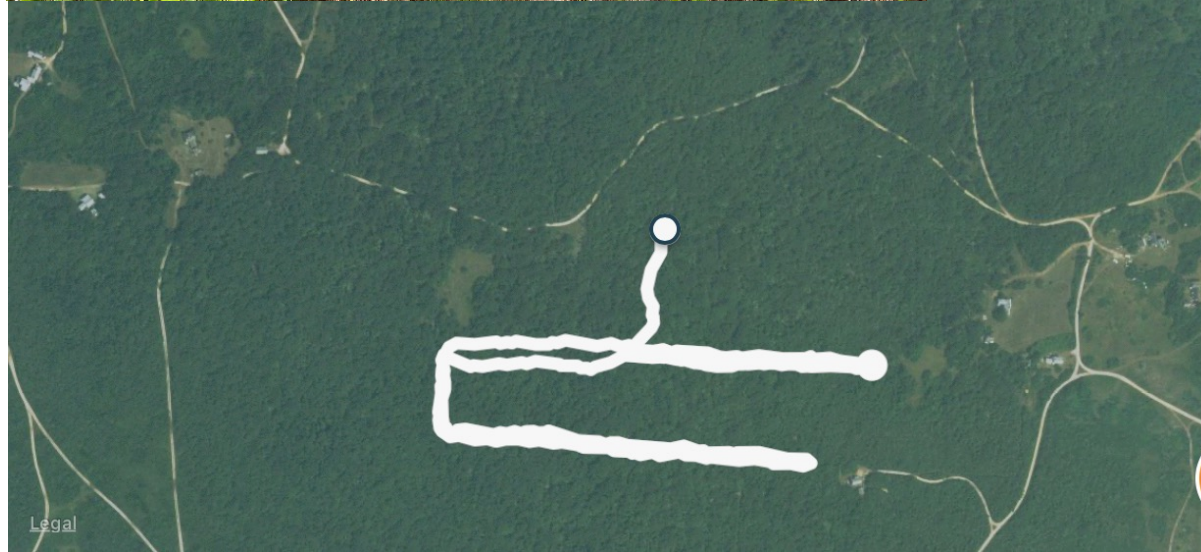


Figure S1. Maps and habitat photos for the 12 study sites.

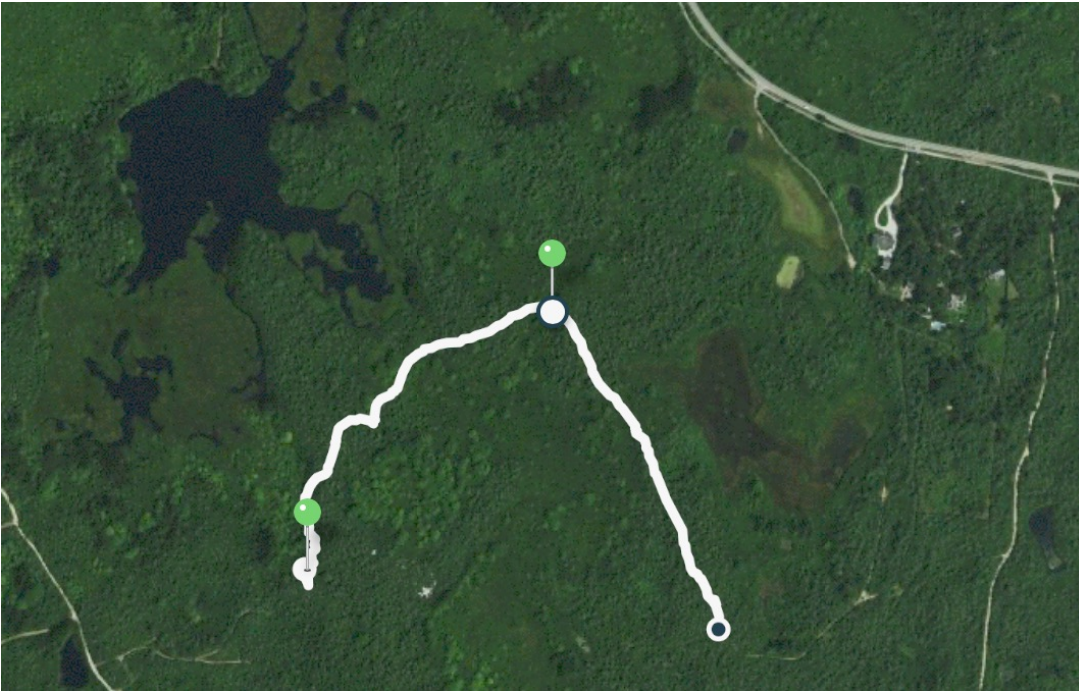
Latitude and longitude are listed for the beginning of each trail.				
Site	Property owner	Trail length (km)	Latitude	Longitude
Stump Pond	Nantucket Land Bank, Nantucket Conservation Foundation	0.96	41° 17' 13.184" N	69° 59' 43.139" W
UMass Field Station	Nantucket Conservation Foundation	0.54	41° 17' 33.409" N	70° 2' 20.123" W
Norwood Farm	Nantucket Conservation Foundation	0.94	47° 17' 25.567" N	70° 1' 26.811" W
Jewel Pond	Mass Audubon Society	0.94	41° 17' 19.029" N	69° 59' 27.947" W
Tuckernuck Island	Tuckernuck Land Trust, private property	1.65	41° 18' 13.827" N	70° 15' 23.997" W
Pine Woods – Lover’s Lane	Commonwealth of MA	0.50	41° 15' 38.205 N	70° 4' 47.223" W
Pine Woods – Water Tower	Commonwealth of MA	0.64	41° 16' 37.853" N	70° 4' 15.578" W
South Pasture	Nantucket Conservation Foundation	1.10	41° 15' 6.790" N	70° 0' 42.788" W
Barrett Farm Road	Nantucket Land Bank	0.78	41° 16' 51.682" N	70° 8' 42.164" W
Linda Loring	Linda Loring Foundation	1.50	41° 17' 32.323" N	70° 10' 11.418" W
Long Pond (lone star ticks)	Nantucket Land Bank	1.4	41° 15' 54.623" N	70° 9' 51.466" W
Clark’s Cove (lone star ticks)	Nantucket Conservation Foundation	0.4	41° 16' 19.079" N	70° 10' 53.758" W



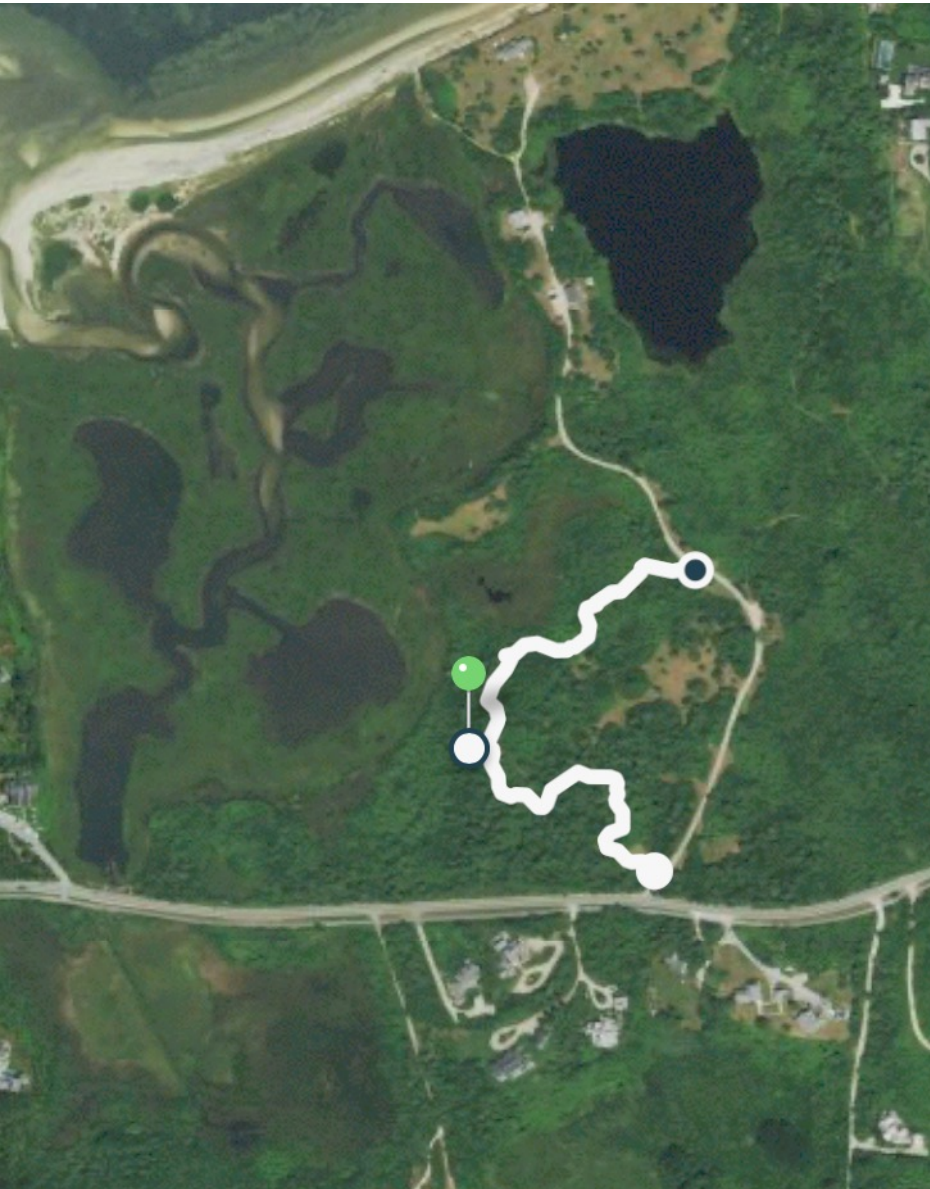
Tuckernuck Site (trail is divided into nearby sections)



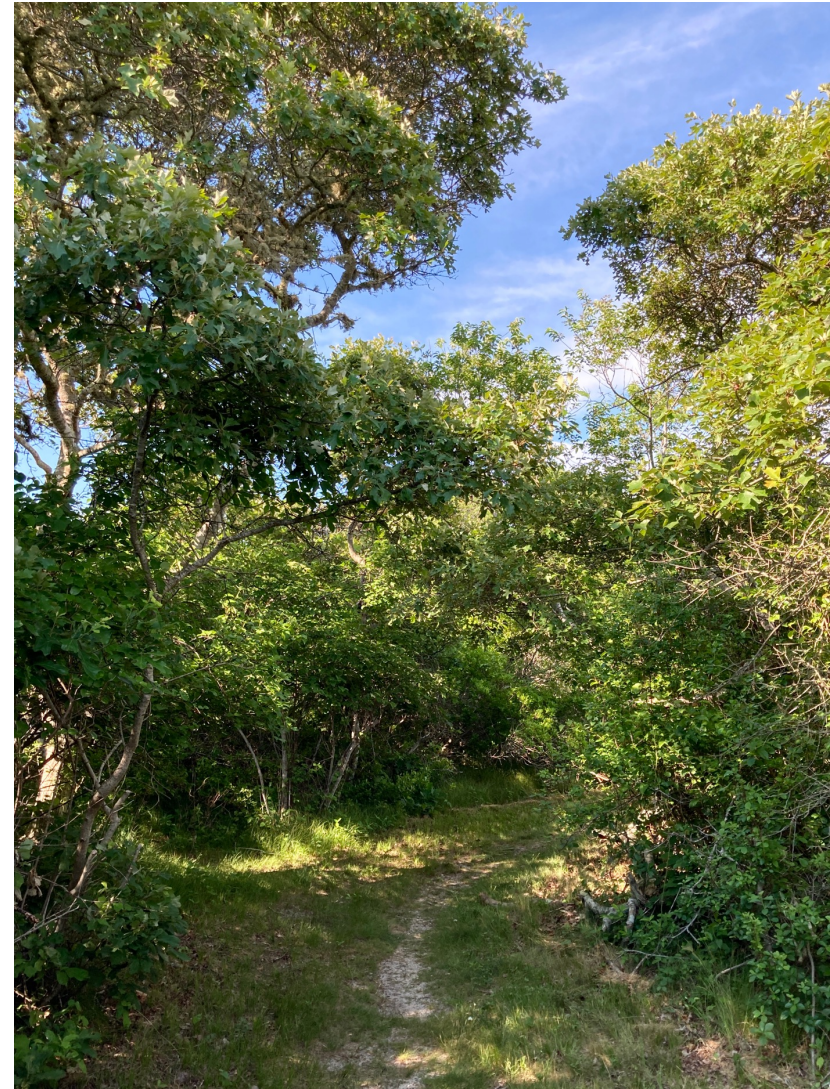
Stump Pond Site – access is via 345 Polpis Rd.



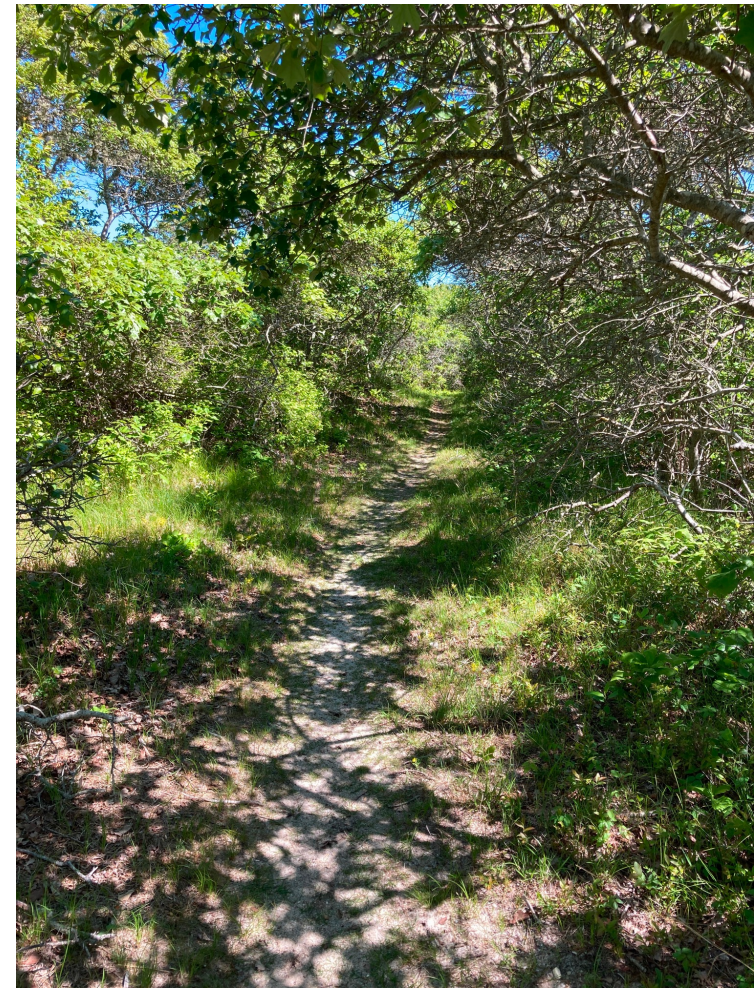
UMass Field Station Site – access at 180 Polpis Rd.



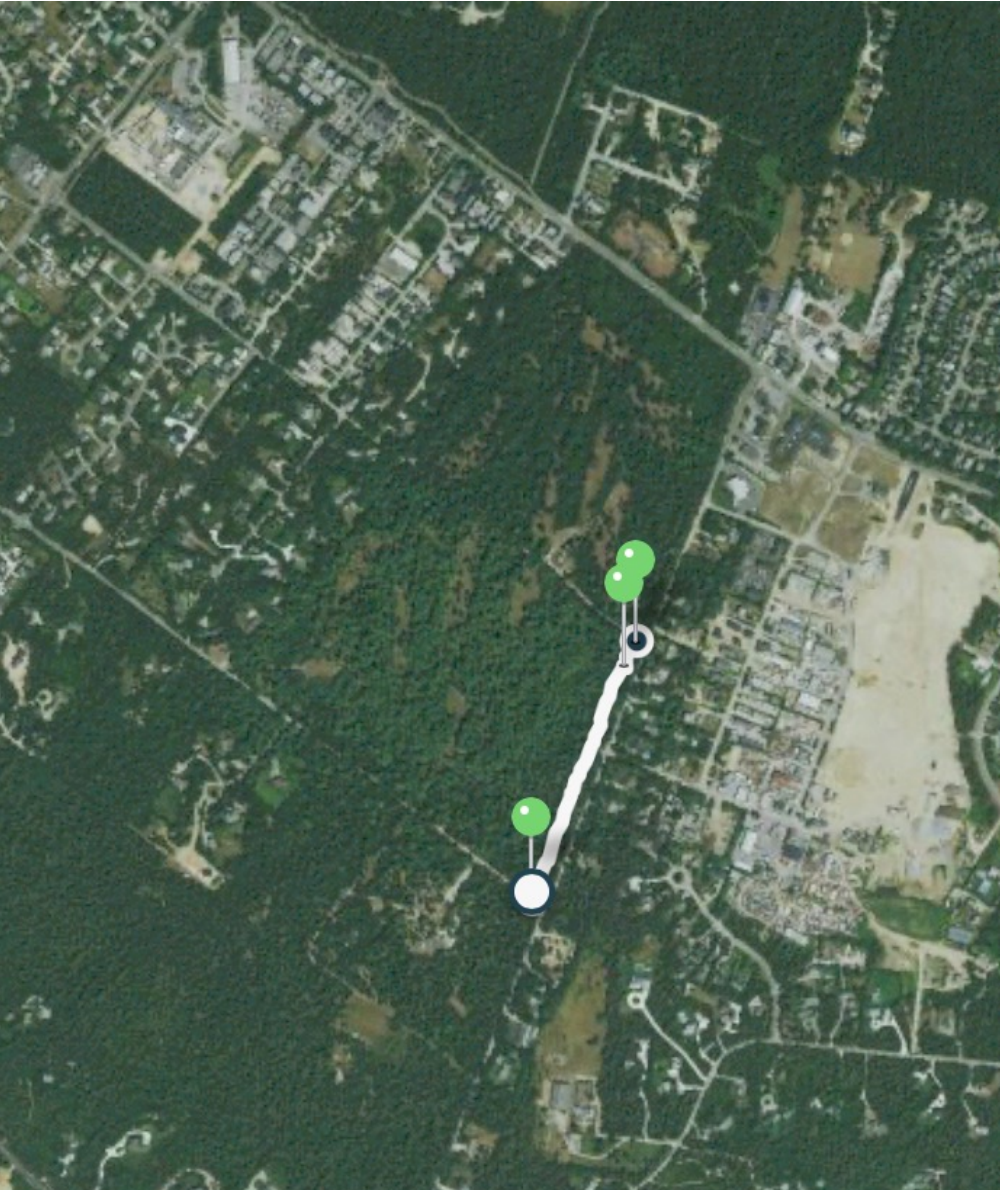
Norwood Farm Site – Old Polpis Rd.



Jewel Pond Site – access via 345 Polpis Rd.



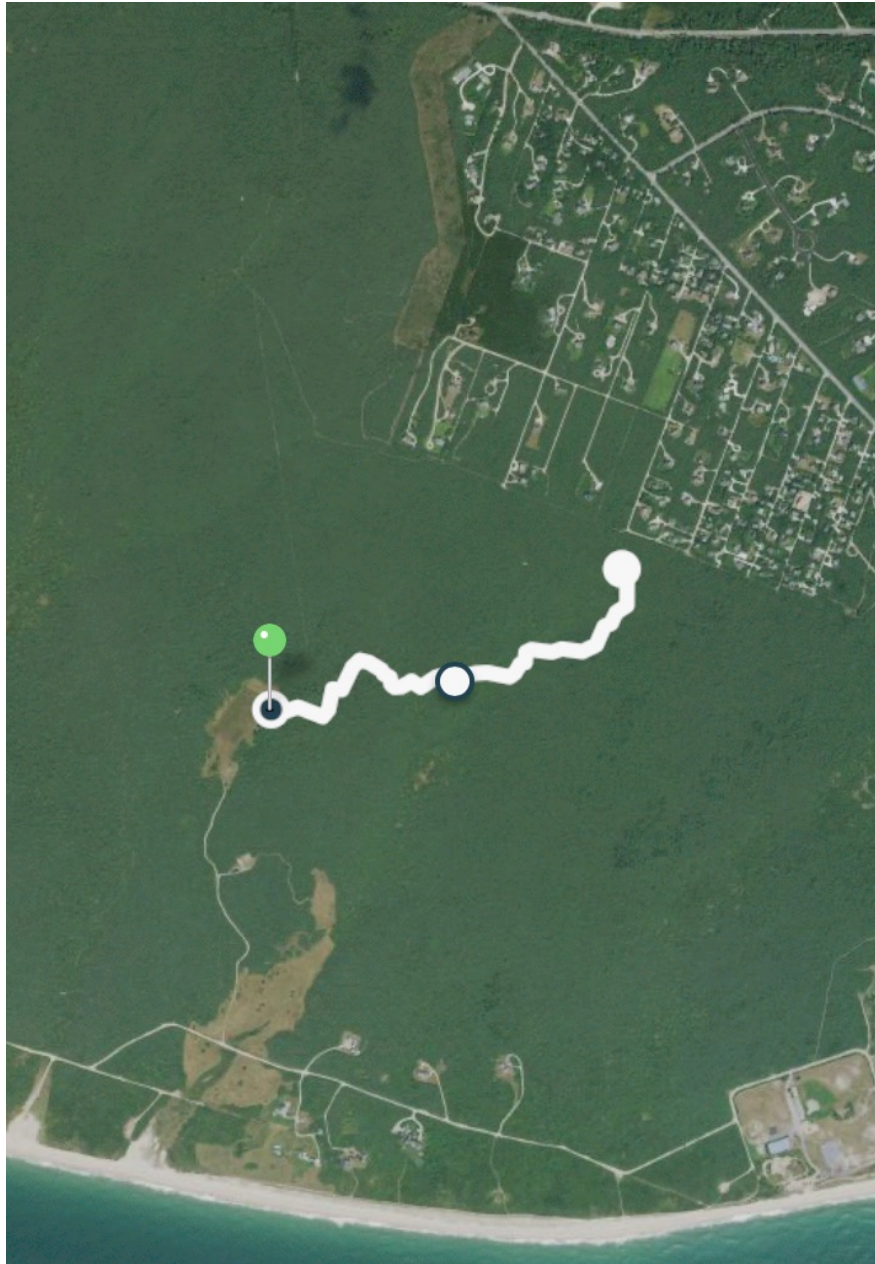
Pine Woods, Lovers Lane Site – corner of Rugged Rd and Lovers Lane.



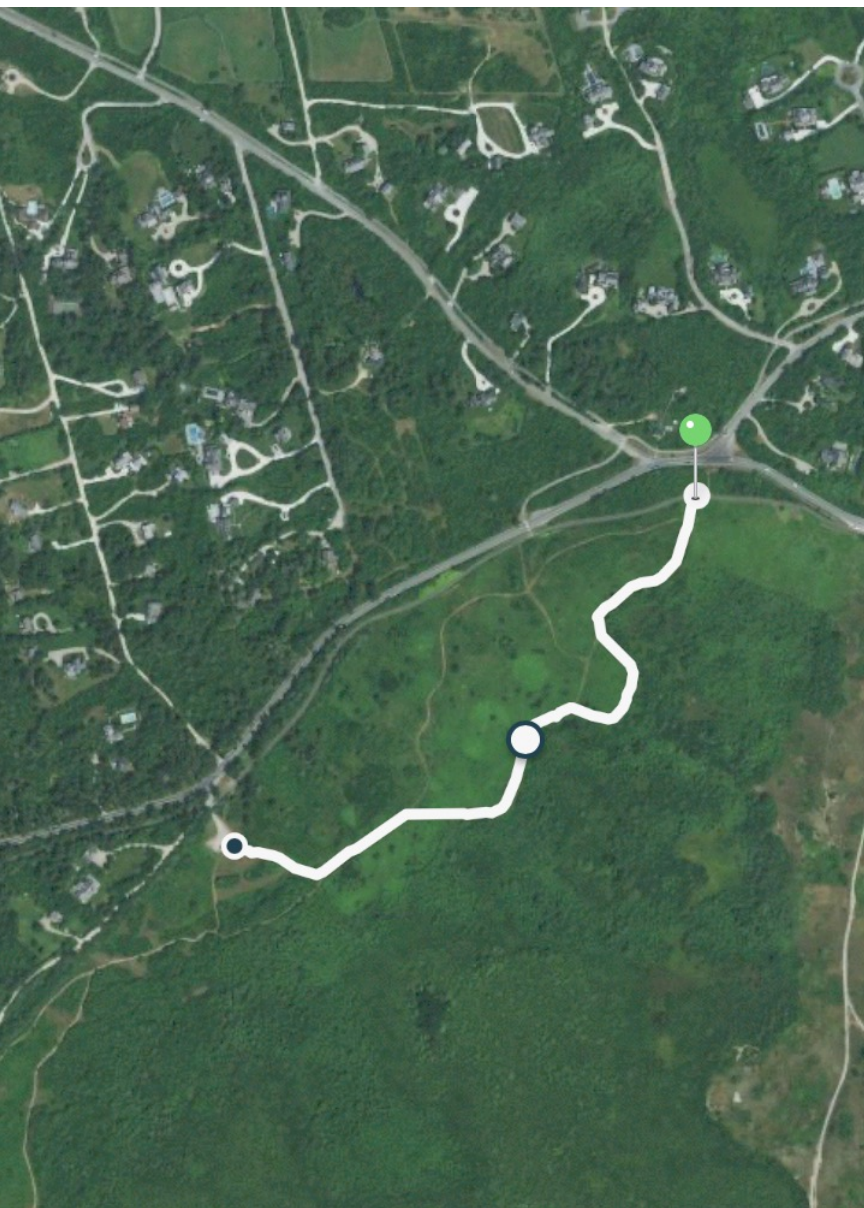
Pine Woods, Water Tower Site – off Polpis Rd.



South Pasture Site – off corner of Gloucester St.



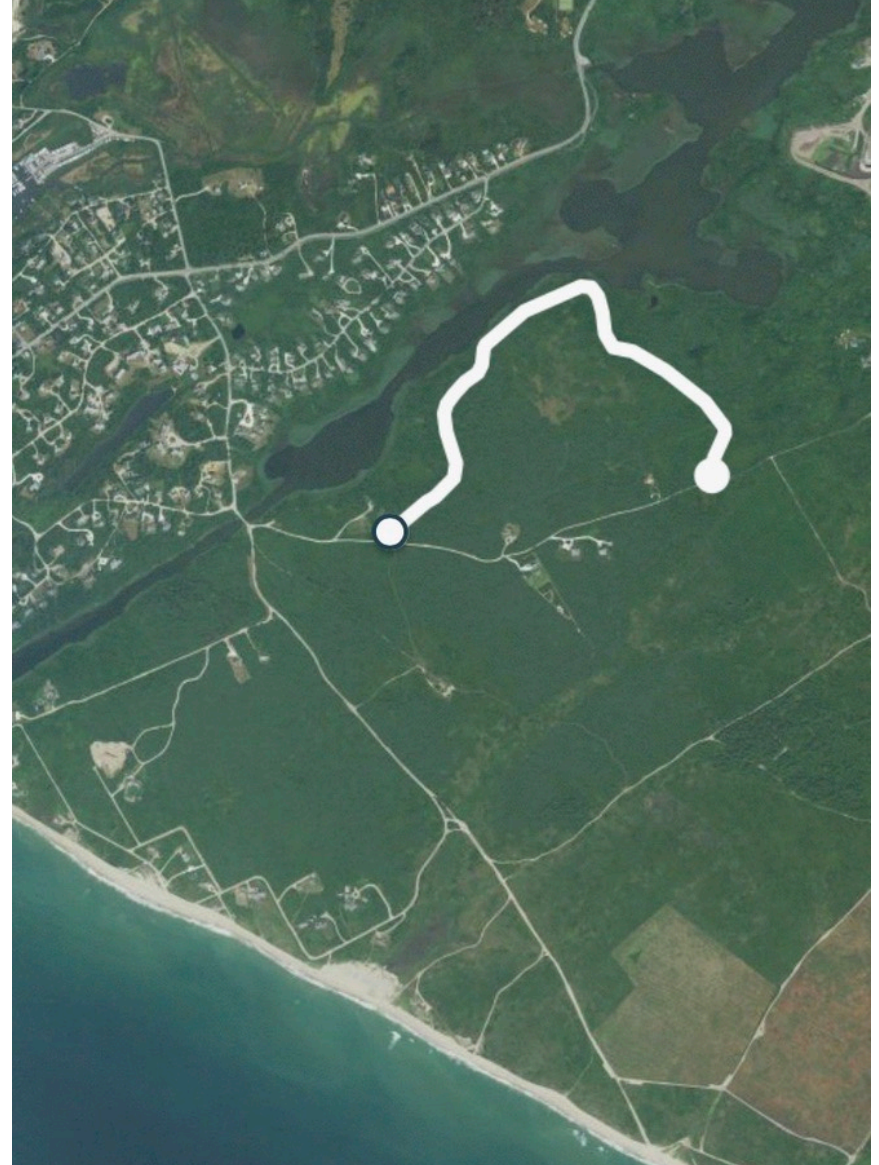
Barrett Farm Road Site – Barrett Farm Rd. near Madaket Rd.



Linda Loring Site – 110 Eel Point Rd.



Long Pond (lone star site)



Clark's Cove (lone star site)

