

Supplementary Materials: Reduced Diversity in the Bacteriome of the Phytophagous Mite *Brevipalpus yothersi* (Acari: Tenuipalpidae)

Oscar E. Ospina, Steven E. Massey and Jose Carlos Verle Rodrigues

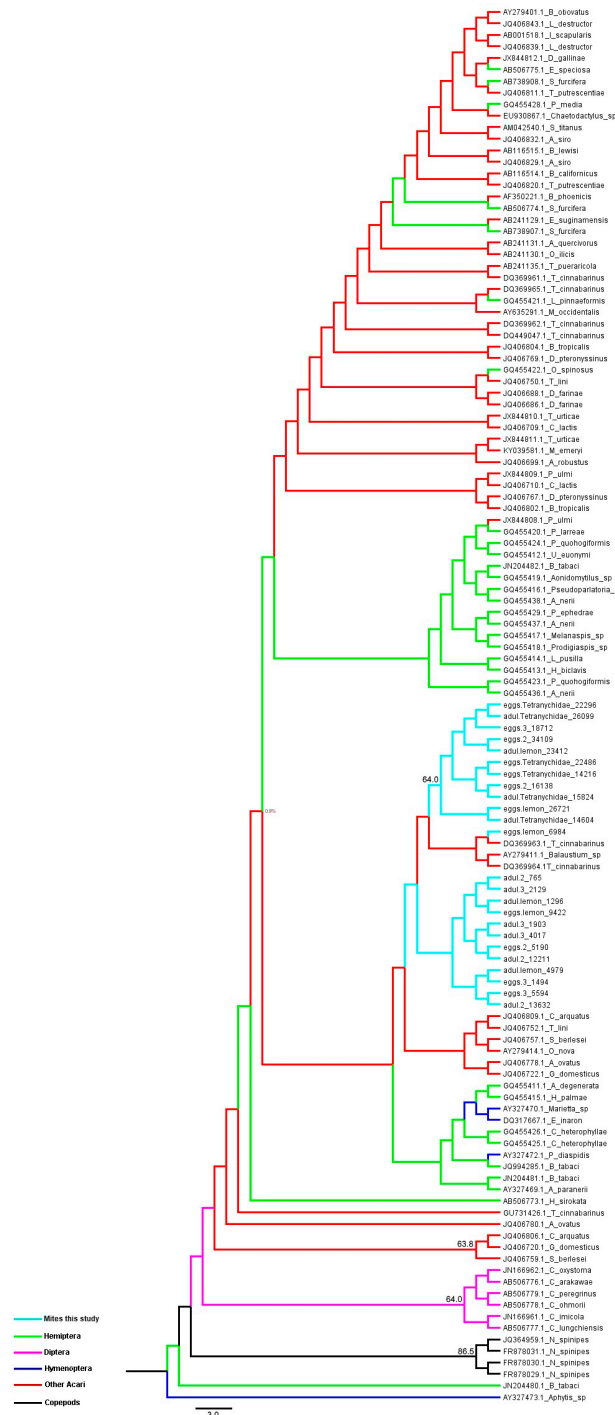


Figure S1. Complete version of the Maximum Parsimony tree for a representative sample of *Cardinium* sequences from different arthropods available at GenBank, and sequences obtained in this study. Color legend indicates the host from where the *Cardinium* were isolated and sequenced. Support values based on bootstrap resampling (1000 replicates) that were higher than 50% are shown. See Table S2 for accession numbers in the tree.

Table S2. Sequences from GenBank published elsewhere that were used in this study for phylogenetic inference in *Cardinium*.

Accession number	Host	Reference
GQ455411	<i>Abgrallaspis degenerata</i>	--
AB241131	<i>Amphitetranychus quercivorus</i>	--
GQ455419	<i>Aonidomytilus</i> sp.	--
AY327473	<i>Aphytis</i> sp.	[1]
AY327469	<i>Aspediotus paranerii</i>	[1]
GQ455436		
GQ455437	<i>Aspidiotus nerii</i>	--
GQ455438		
AY279411	<i>Balaustium</i> sp.	[2]
JQ994285		--
JN204480		
JN204481	<i>Bemisia tabaci</i>	[3]
JN204482		
AB116514	<i>Brevipalpus californicus</i>	--
AB116515	<i>Brevipalpus lewisi</i>	--
AY279401	<i>Brevipalpus obovatus</i>	[2]
AF350221	<i>Brevipalpus phoenicis</i>	--
GQ455425		
GQ455426	<i>Chionaspis heterophyllae</i>	--
AB506776	<i>Culicoides arakawae</i>	[4]
JN166961	<i>Culicoides imicola</i>	[5]
AB506777	<i>Culicoides lungchiensis</i>	[4]
AB506778	<i>Culicoides ohmorii</i>	[4]
JN166962	<i>Culicoides oxystoma</i>	[5]
AB506779	<i>Culicoides peregrinus</i>	[4]
DQ317667	<i>Encarsia inaron</i>	[6]
AB241129	<i>Eotetranychus suginamensis</i>	--
AB506775	<i>Euides speciosa</i>	[4]
AB506773	<i>Harmalia sirokata</i>	[4]
GQ455415	<i>Hemiberlesia palmae</i>	--
GQ455413	<i>Howardia biclavis</i>	--
GQ455421	<i>Lepidosaphes pinnaeformis</i>	--
GQ455414	<i>Leucaspis pusilla</i>	--
AY327470	<i>Marietta</i> sp.	[1]
GQ455417	<i>Melanaspis</i> sp.	--
AY635291	<i>Metaseiulus occidentalis</i>	[7]
FR878029		
FR878030		--
FR878031	<i>Nitocra spinipes</i>	
JQ364959		[8]
GQ455422	<i>Oceanaspidotus spinosus</i>	--
GQ455423		
GQ455424	<i>Palinaspis quohogiformis</i>	--
GQ455429	<i>Pallulaspis ephedrae</i>	--
JX844808		
JX844809	<i>Panonychus ulmi</i>	--
AY327472	<i>Plagiomerus diaspidis</i>	[1]
GQ455428	<i>Poliaspis media</i>	--
GQ455418	<i>Prodigisapis</i> sp.	--

GQ455420	<i>Protargionia larreae</i>	--
GQ455416	<i>Pseudoparlatoria</i> sp.	--
AM042540	<i>Scaphoideus titanus</i>	[9]
AB506774	<i>Sogatella furcifera</i>	[4]
DQ369965		
DQ449047	<i>Tetranychus cinnabarinus</i>	[10]
GU731426		--
AB241135	<i>Tetranychus pueraricola</i>	--
JX844811	<i>Tetranychus urticae</i>	--
GQ455412	<i>Unaspis euonymi</i>	--

References

1. Zchori-Fein, E.; Perlman, S.J. Distribution of the bacterial symbiont *Cardinium* in arthropods. *Mol. Ecol.* **2004**, *13*, 2009–2016.
2. Weeks, A.R.; Velten, R.; Stouthamer, R. Incidence of a new sex-ratio-distorting endosymbiotic bacterium among arthropods. *Proc. R. Soc. B Biol. Sci.* **2003**, *270*, 1857–1865.
3. Singh, S.T.; Priya, N.G.; Kumar, J.; Rana, V.S.; Ellango, R.; Joshi, A.; Priyadarshini, G.; Asokan, R.; Rajagopal, R. Diversity and phylogenetic analysis of endosymbiotic bacteria from field caught *Bemisia tabaci* from different locations of North India based on 16S rDNA library screening. *Infect. Genet. Evol.* **2012**, *12*, 411–419.
4. Nakamura, Y.; Kawai, S.; Yukuhiro, F.; Ito, S.; Gotoh, T.; Kisimoto, R.; Yanase, T.; Matsumoto, Y.; Kageyama, D.; Noda, H. Prevalence of *Cardinium* bacteria in planthoppers and spider mites and taxonomic revision of “*Candidatus Cardinium hertigii*” based on detection of a new *Cardinium* group from biting midges. *Appl. Environ. Microbiol.* **2009**, *75*, 6757–6763.
5. Morag, N.; Klement, E.; Saroya, Y.; Lensky, I.; Gottlieb, Y. Prevalence of the symbiont *Cardinium* in *Culicoides* (Diptera: Ceratopogonidae) vector species is associated with land surface temperature. *FASEB J.* **2012**, *26*, 4025–4034.
6. Perlman, S.J.; Kelly, S.E.; Zchori-Fein, E.; Hunter, M.S. Cytoplasmic incompatibility and multiple symbiont infection in the ash whitefly parasitoid, *Encarsia inaron*. *Biol. Control* **2006**, *39*, 474–480.
7. Jeyaprakash, A.; Hoy, M.A. Multiple displacement amplification in combination with high-fidelity PCR improves detection of bacteria from single females or eggs of *Metaseiulus occidentalis* (Nesbitt) (Acari: Phytoseiidae). *J. Invertebr. Pathol.* **2004**, *86*, 111–116.
8. Edlund, A.; Ek, K.; Breitholtz, M.; Gorokhova, E. Antibiotic-induced change of bacterial communities associated with the copepod *Nitocra spinipes*. *PLoS One* **2012**, *7*, e33107.
9. Marzorati, M.; Alma, A.; Sacchi, L.; Pajoro, M.; Palermo, S.; Brusetti, L.; Raddadi, N.; Balloi, A.; Tedeschi, R.; Clementi, E.; Corona, S.; Quaglino, F.; Bianco, P.A.; Beninati, T.; Bandi, C.; Daffonchio, D. A novel Bacteroidetes symbiont is localized in *Scaphoideus titanus*, the insect vector of Flavescence Doree in *Vitis vinifera*. *Appl. Environ. Microbiol.* **2006**, *72*, 1467–1475.
10. Liu, Y.; Miao, H.; Hong, X.Y. Distribution of the endosymbiotic bacterium *Cardinium* in chinese populations of the carmine spider mite *Tetranychus cinnabarinus* (Acari: Tetranychidae). *J. Appl. Entomol.* **2006**, *130*, 523–529.



© 2016 by the authors; licensee MDPI, Basel, Switzerland. This article is an open access article distributed under the terms and conditions of the Creative Commons by Attribution (CC-BY) license (<http://creativecommons.org/licenses/by/4.0/>).