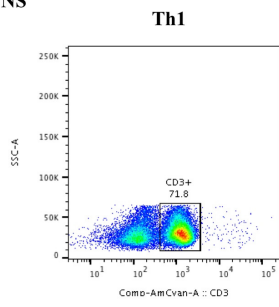
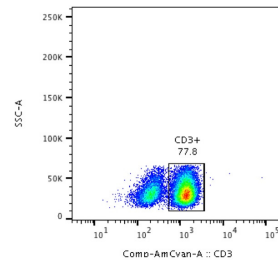


Figure S2: PBMCs' gating strategy and representative plots for MAIT cells expressing Th1 and Th17 cytokines, and cytotoxic markers

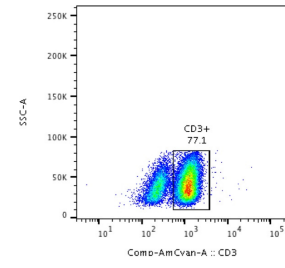
UNS



Th17



Cytotoxic markers



P/I

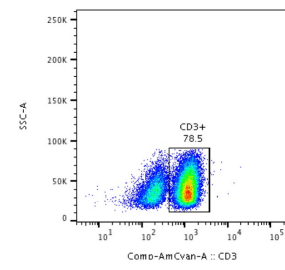
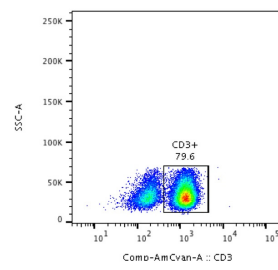
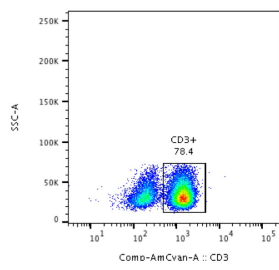


Figure S3: The percentage of CD3⁺ population between unstimulated and P/I antigen stimulation.

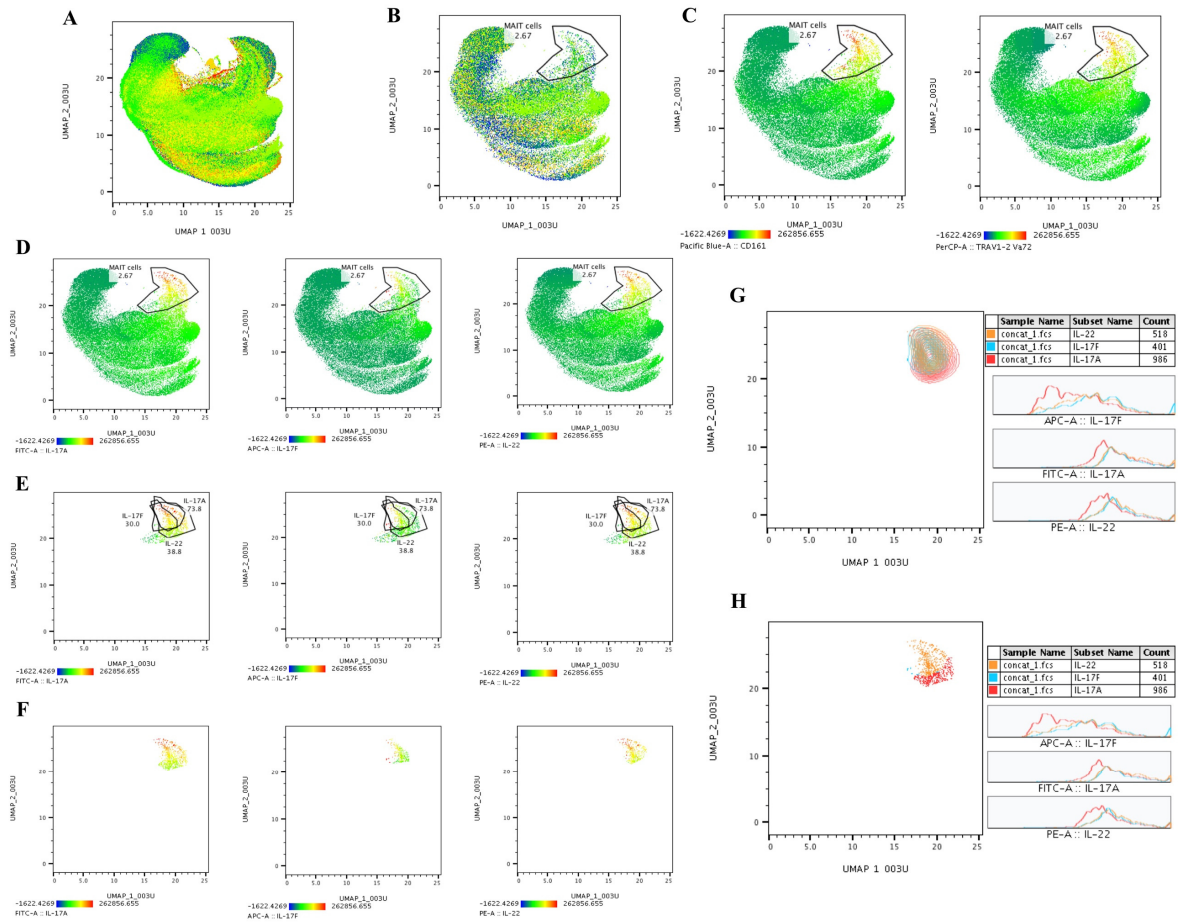


Figure S4: Multi-dimensionality profile of MAIT cells expressing Th17 (IL-17A, IL-17F, and IL-22) cytokines using UMAP analysis

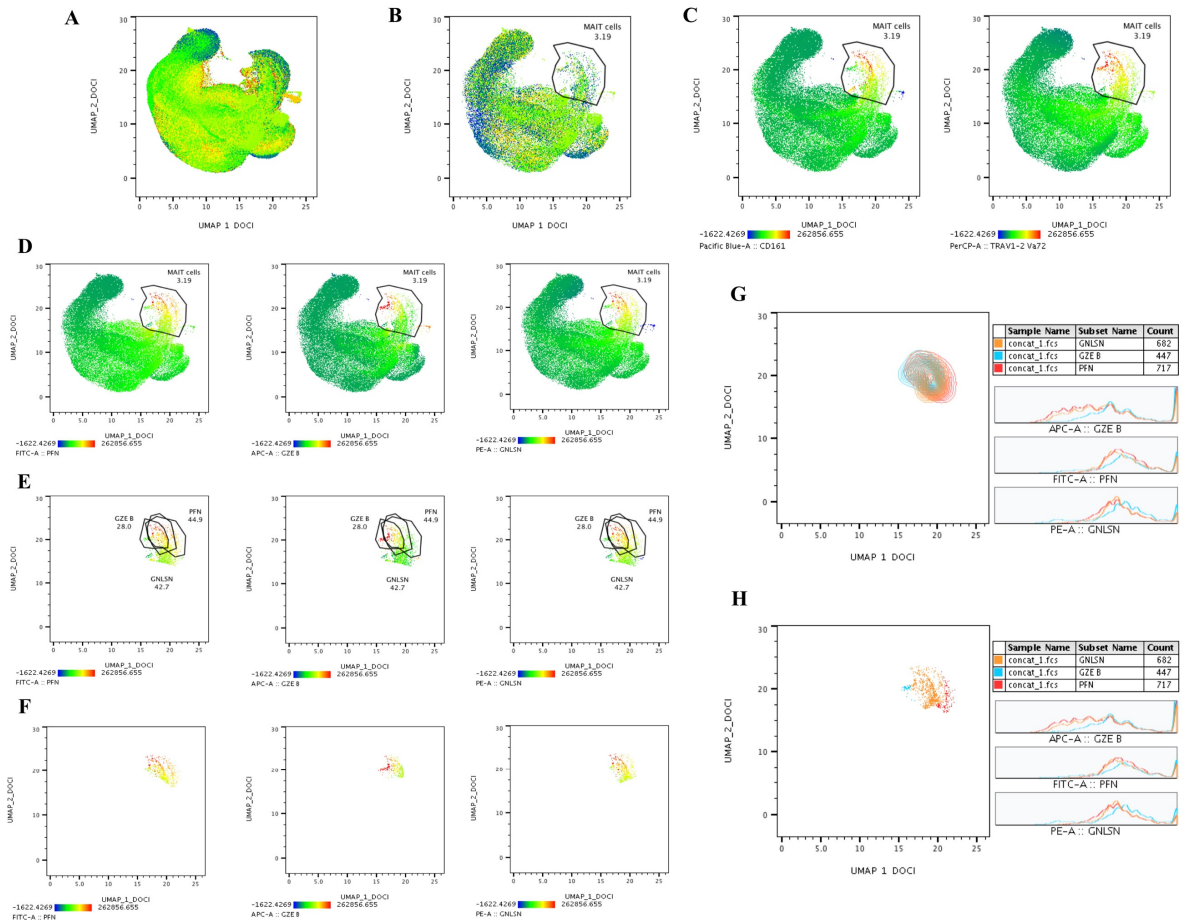


Figure S5. Multi-dimensionality profile of MAIT cells expressing cytotoxic markers using UMAP analysis. (A) Ungated UMAP profile of CD3⁺ lymphocyte population (B) Overall MAIT cell gated population (TRAV1-2 Vα7.2 and CD161) (C) individual expression of TRAV1-2 Vα7.2 and CD161 markers (D) UMAP profile showing the expression of cytotoxic markers expressing MAIT cells (E, F) Overall and individual expression levels of cytotoxic markers frequencies (G, H) Histogram profile or dot blot expression of cytotoxic markers expressing MAIT cells.