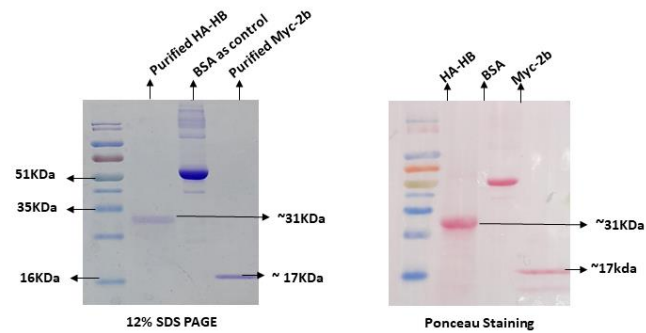
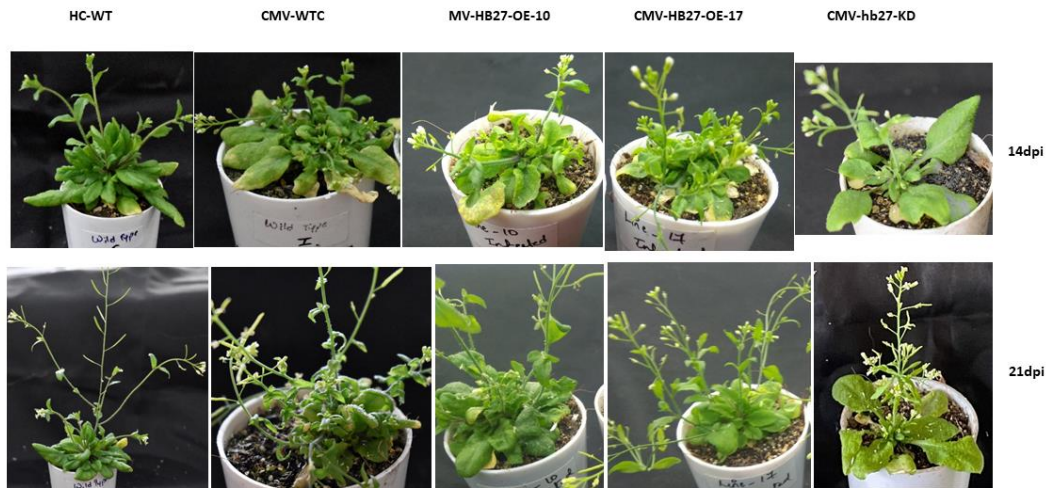


Supplementary Figure S1:



Far western blotting: Purified HB27-HA-pET28a and CMV2b-MYC-pET28a proteins were run along with BSA run on SDS-PAGE gel and stained with coomassie brilliant blue (a). the ponceau staining was done to ensure the transfer of proteins and consider as loading control (b).

Supplementary Figure S2:



At 14 and 21 dpi, the symptoms of CMV on HB27-OE, hb27-KD, and wild type plants were compared to healthy wild type plants. When compared to HB27-KD and wild type plants, the severity of CMV infection in HB27-OE is lower.

Table S1: List of primers used in this study. Underlined sequences represent the restriction sites. Italicized sequences showed the HA and MYC tag sequences.

	Y2H construct
HB27	FP 5' <u>AGATCT</u> ATGGATGAGATAAAACCAAA 3' RP 5' <u>CTCGAGT</u> CATTCATCAATTATAATTT 3'
CMV 2b	FP 5' <u>CATATG</u> ATGGATGTGTTGA 3' RP 5' <u>CCCGGGT</u> CAAAACGACCCTTC 3'
	BiFC construct
HB27	FP 5' <u>CTCGAG</u> ATGGATGAGATAAAACCAAAAC 3' RP 5' <u>ACTAGTTT</u> CATCAATTATAATTTTATCC 3'
2b	FP 5' <u>GGATCC</u> ATGGATGTGTTGACAGTAGTG 3' RP 5' <u>CTCGAG</u> AAACGACCCTTCGGCCCATTCG 3'
	Far western construct
HB27	FP 5' GCAGCCATATG <u>TACCCATACGATGTTCCAGATTACGCT</u> GATGAGATAAAACCAAAG 3' RP 5' TGGTGCTCGAGT <u>CATTCATCAATTATAAT</u> 3'
CMV 2b	FP 5' <u>GGATCC</u> ATGGAACAAAACTCATCTCAGAAGAGGATCTGGATGTGTTGACAGTAG 3' RP 5' TGGTGCTCGAGTTATCAAAACGACCCTTCG
	Overexpression construct
HB27	FP 5' AATAGATCTTATGGATGAGATAAAACCAAAG 3' RP 5' TTAAGTAGTTTCATCAATTATAATTTTATCC 3'
GFP	FP 5' GGAGTTGTCCCAATTCTTGTT 3' RP 5' GTCTCTCTTTTCGTTGGGATC 3'
Hygromycin	FP 5' CATAACAAGCCAACCGGCCTCC 3' RP 5' GCGTGGATATGTCCTGCGGGTA 3'
	Mutant genotyping
HB27 full length	FP 5' ATGGATGAGATAAAACCAAAGAAAGAAG 3' RP 5' TTCATCAATTATAATTTTATCCTTGTTG 3'
LBb1.3	5' ATTTTGCCGATTTCGGAAC 3'
	Real time Primers
18S	FP 5' TCTGCCCCGTTGCTCTGATG 3' RP 5' TCACCCGTCACCACCATAG 3'
HB27	FP 5' TCCTCGACTCAATCTTCAAA 3' RP 5' TTCTCCGGGATTAACCTCTC 3'
CMV	FP 5' ACCCTGAAACCGCCTGAAAT 3' RP 5' TCCGAAGTGAACCCACACG 3'