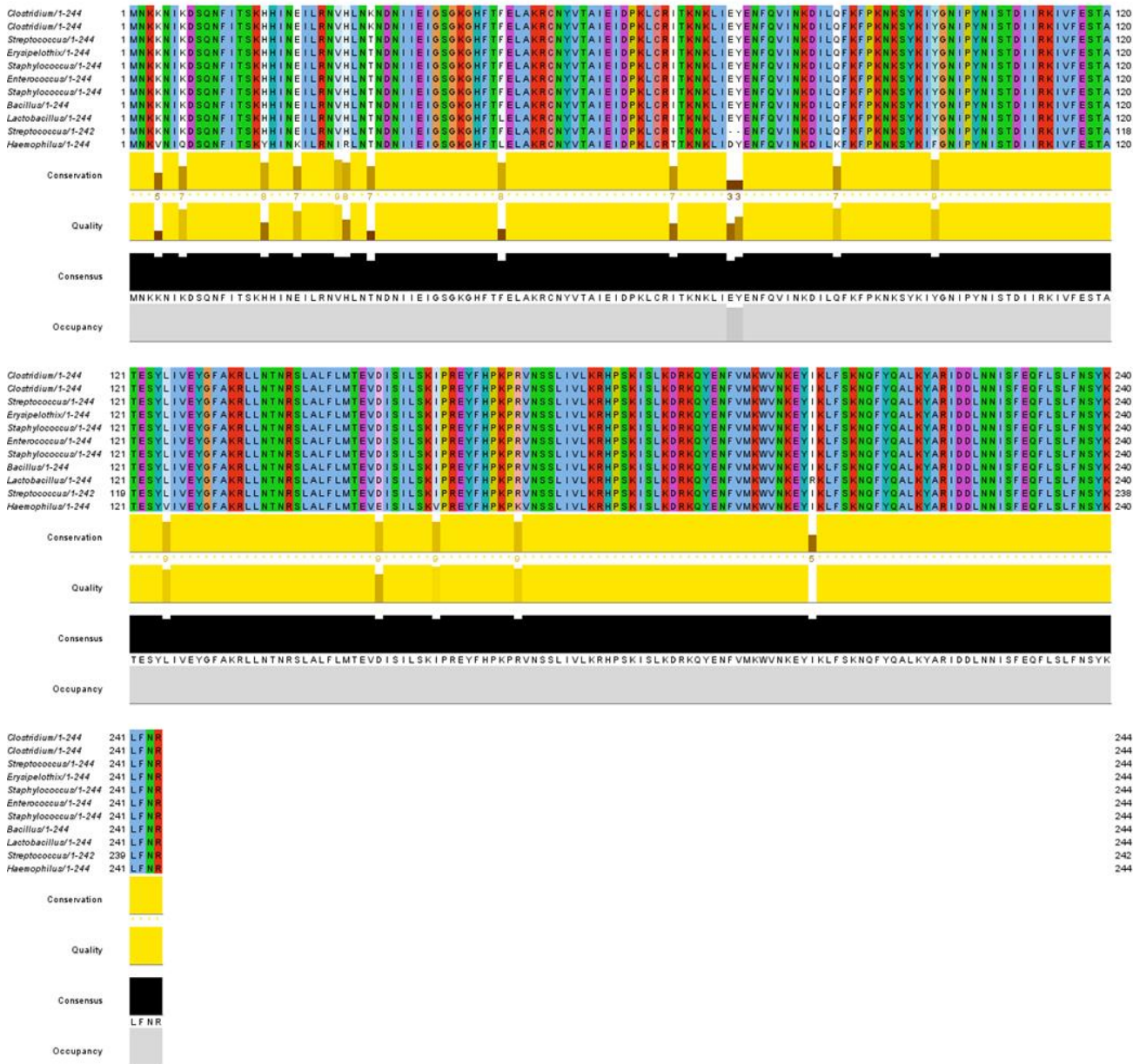


Supplementary Figure S1. Genetic alignments of the *erm*(T) methylases of *C. perfringens* MLG1108 and MLG7009 with *erm*(T) methylases from other species



Supplementary Figure S2. Alignment of the bacteriocin BCN5 from our isolates (*C. perfringens* MLG3406, MLG4206, MLG5719, MLG2919 and MLG7307) and two bacteriocin BCN5 from GenBank database (P08696 and BAD90628)

