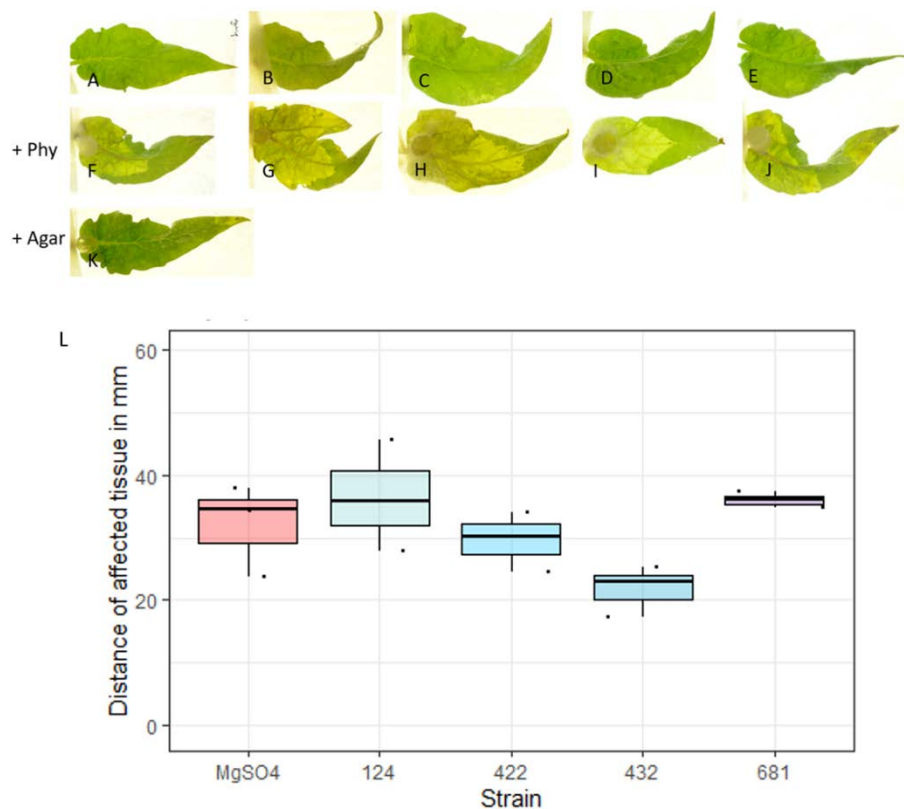
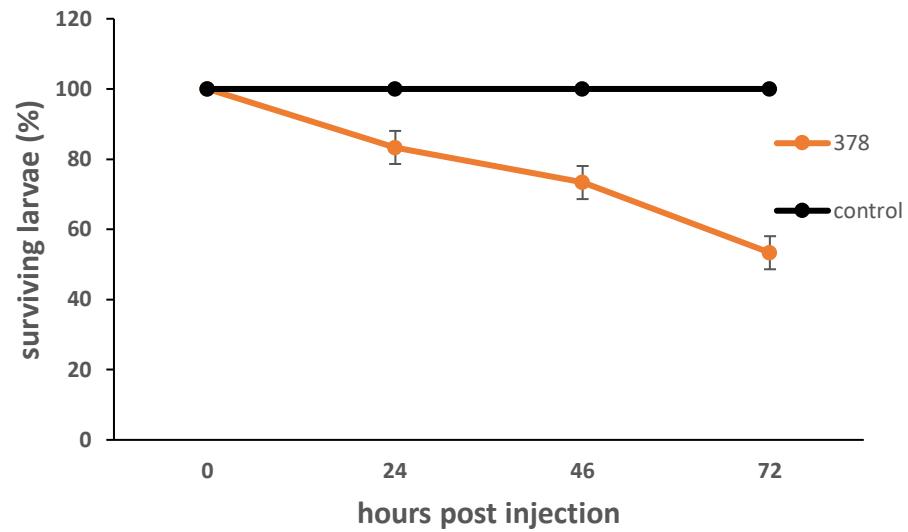




**Figure S1: Apple model for testing activity against *E. amylovora*.** Injected apple before incubation.



**Figure S2: Tested strains did not inhibit *P. infestans*.** A-K) Tomato leaves sprayed with  $MgSO_4$  solution (A,F,K), #124 (B,G), #422 (C,H), #432 (D,I), #681 (E,J) and inoculated with an agar plug containing *P. infestans* (+Phy) or only agar (+Agar). The distance of water soaking progression across the leaf was measured and plotted.



**Figure S3: Survival curve for *G. mellonella* larvae infected with *P. agglomerans* #378.** Larvae were injected with approximately  $5 \times 10^4$  bacteria and incubated at 30°C in the dark. Live and dead larvae were counted at 24, 48 and 72 h p.i. Curve represents the mean of three separate experiments. Error bars represent the standard deviation of the data.