

Figure S1. Images of the root tissues of *Lactuca serriola* genotype P5 with GFPuv-transformed isolates using confocal microscopy. The plant cell wall and isolates are indicated by red and green, respectively. (a) Uninfected control, (b) *Pantoea septica* YJ1, (c) *Kosakonia cowanii* YJ4, (d) *Erwinia tasmaniensis* YJ6, (e) *K. cowanii* SD1, (f) *C. dubliensis* subsp. *lausanneisis* MS26, (g) *K. cowanii* GG1, (h) *P. ananatis* GG19. Scale bar: 50  $\mu$ m.

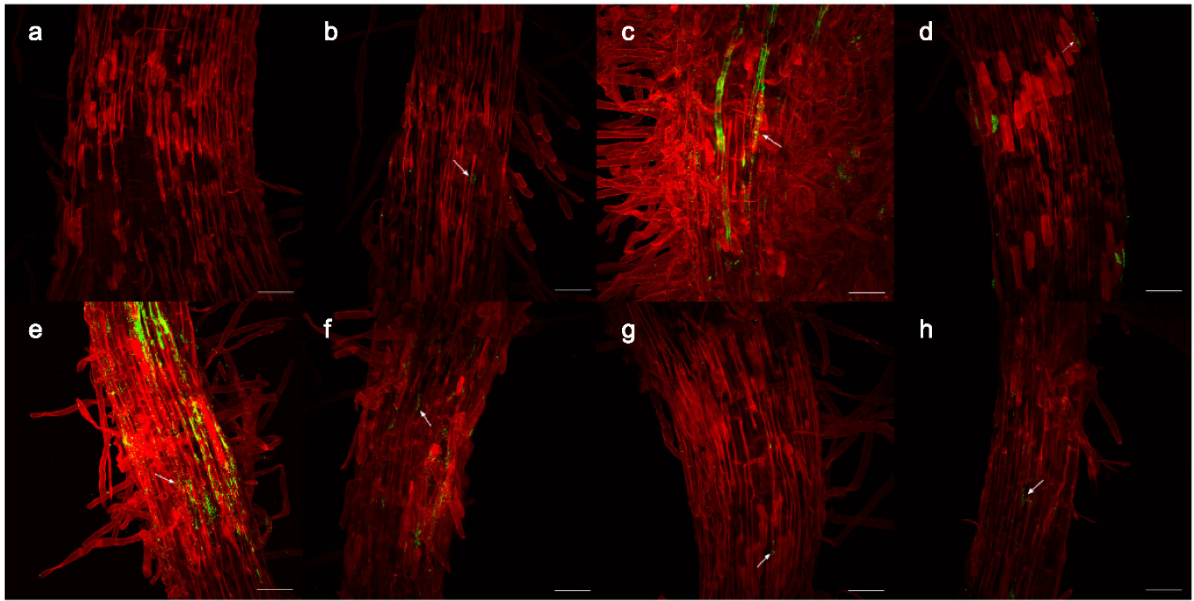


Table S1. The sample size for each bacterial treatment and each plant genotype. The number of plant individuals (the number of replicates in benign water conditions / number of replicates in drought conditions) is given. Names of bacterial strains are provided in the Materials and Methods.

[illegible]