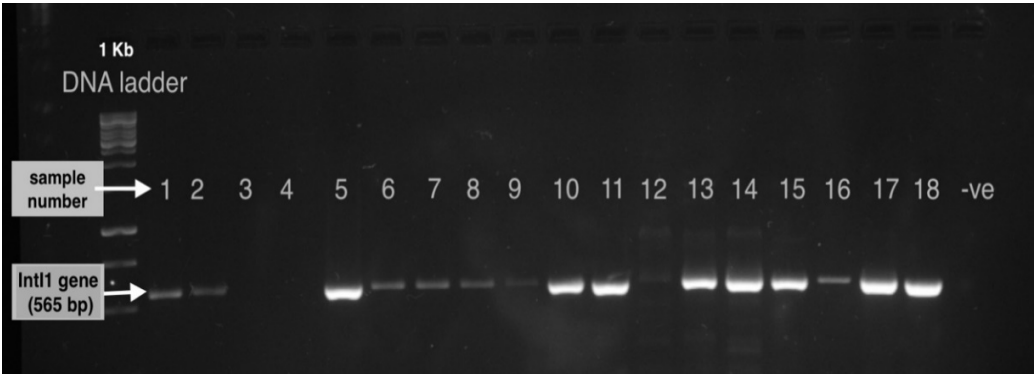


Supplementary figures

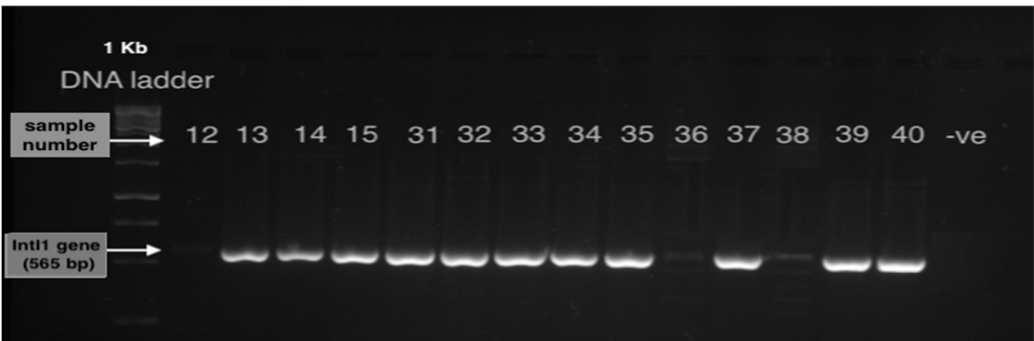
(A)



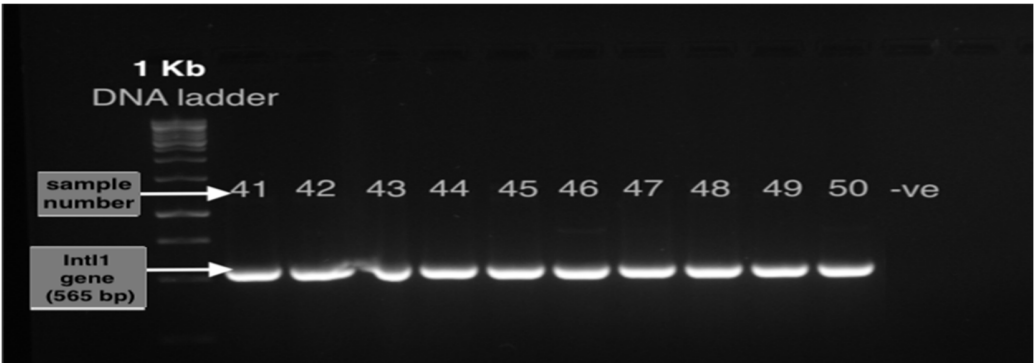
(B)



(C)

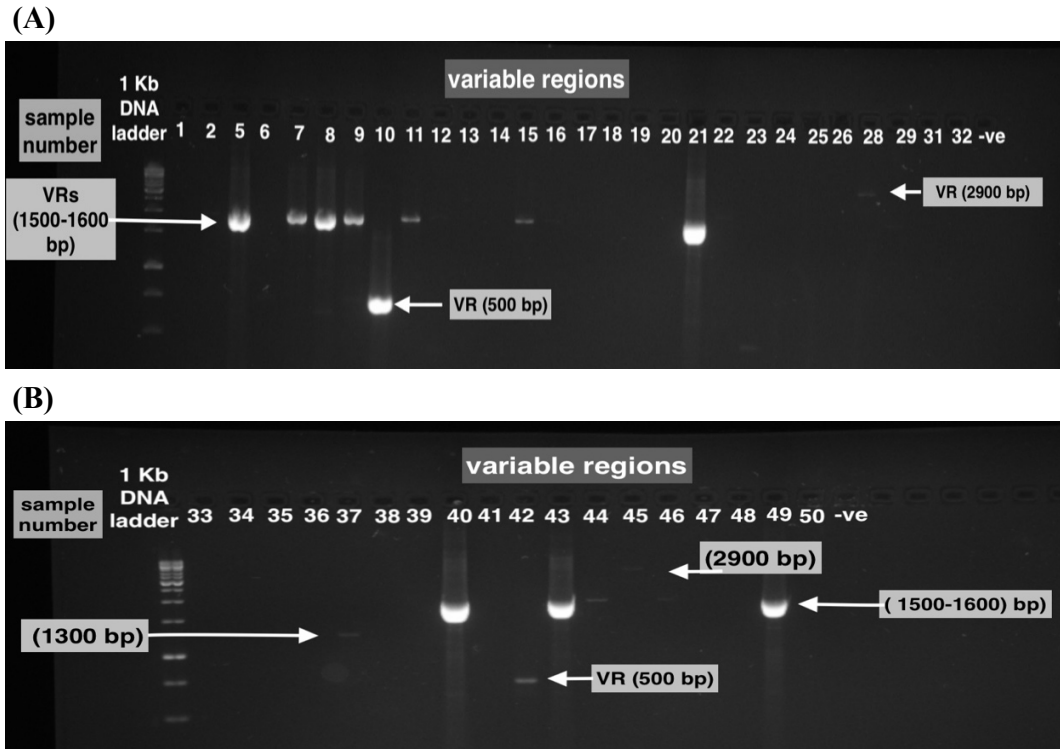


(D)



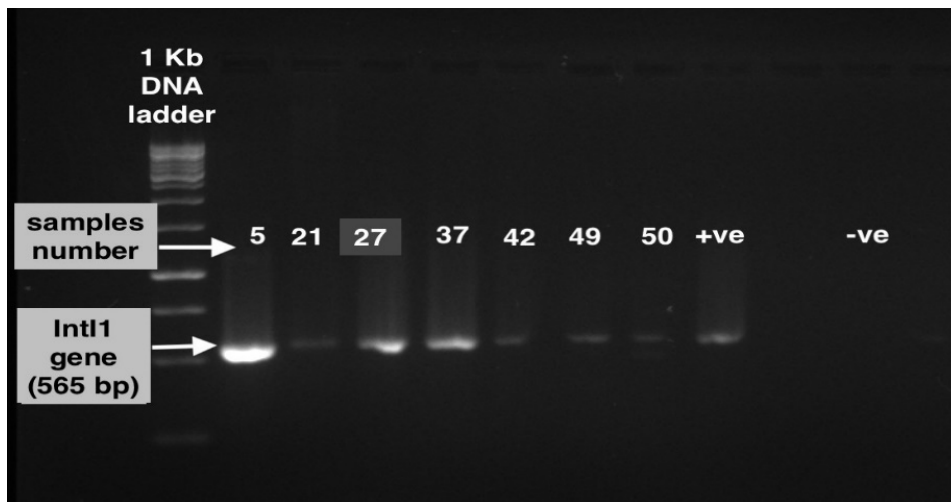
Supplementary Figure S1 Agarose gel electrophoresis of class 1 integrons (IntI1 gene).

(A, B, C, D) lane (1) 1 Kb DNA ladder, lane (2-19) *K. pneumoniae* isolates in A, (19-30) in B, (31-40) in C isolates 12, 13, 14 and 15 are repeated, and (41-50) in D. (-ve) negative control for integron gene.



Supplementary Figure S2. Agarose gel electrophoresis of variable regions genes in 50 *K. pneumoniae* isolates.

(A) and (B), lane (1) 1 Kb DNA ladder, lane (2-29) *K. pneumoniae* isolates in A, and (2-19) in B. (-ve) negative control for the variable gene.



Supplementary Figure S3. Agarose gel electrophoresis of class 1 integron gene in trans-conjugant colonies from the conjugation experiment (n=7). lane (1) 1 Kb DNA ladder, lane (2-8) *intI1* as conjugation experiment products (+ve) positive control, and (-ve) negative control.