

Supplementary Material

Effects of varying levels of wheat bran dietary fiber on growth performance, fiber digestibility and gut microbiota in Erhualian and Large White pigs

Taoran Du ¹, Pinghua Li ^{1,2,3}, Qing Niu ^{1,4}, Guang Pu ¹, Binbin Wang ¹, Gensheng Liu ¹, Pinghui Li ¹, Peipei Niu ², Zongping Zhang ³, Chengwu Wu ³, Liming Hou ^{1,2,3}, Mette Skou Hedemanne ⁵, Qingbo Zhao ³ and Ruihua Huang ^{1,2,3*}

* Correspondence: Ruihua Huang: rhhuang@njau.edu.cn

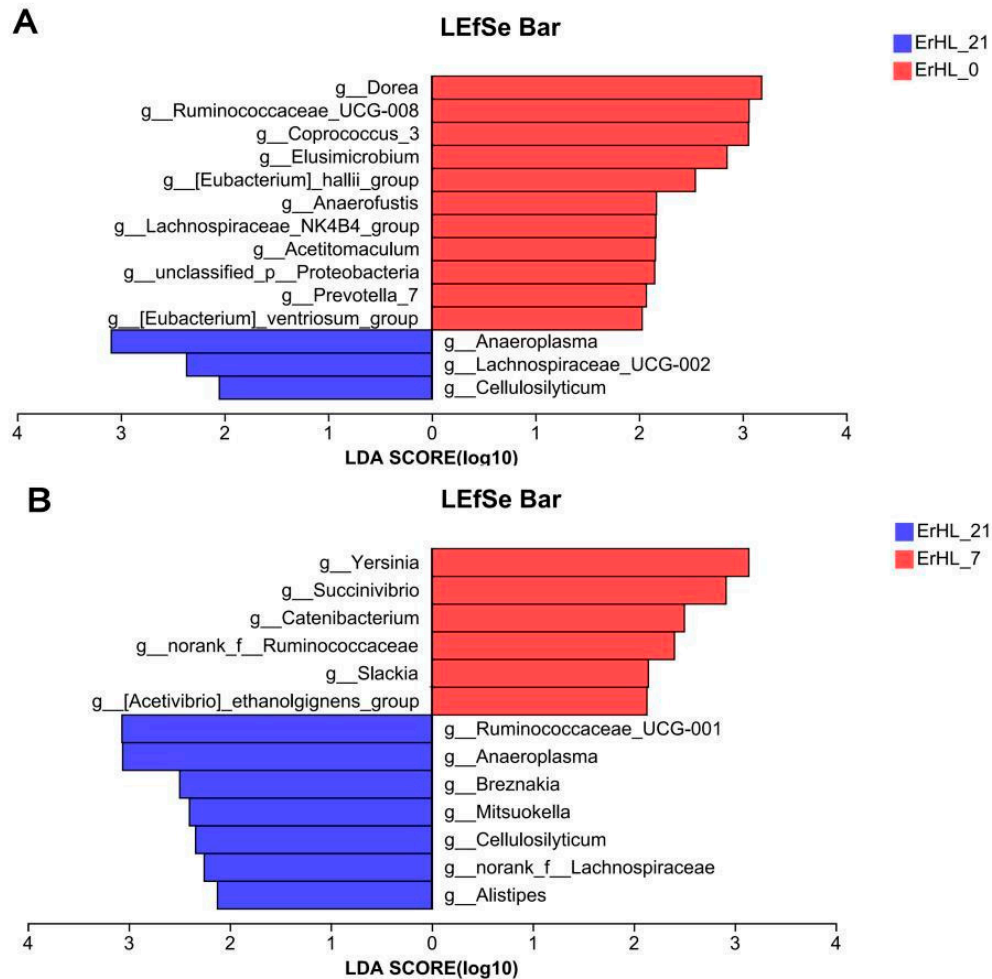


Figure S1. Linear discriminant analysis (LDA) effect size (LEfSe) on genera level of cecum microbiota of Er-HL between ErHL-0, ErHL-21 group (A) and ErHL-7, ErHL-21 group (B). ErHL_0 = the cecal samples of Erhualian fattening barrows fed with basal diet; ErHL_7 = the cecal samples of Erhualian fattening barrows fed with 7% wheat bran replaced basal diet; ErHL_21 = the cecal samples of Erhualian fattening barrows fed with 21% wheat bran replaced basal diet.

Spearman Correlation Heatmap

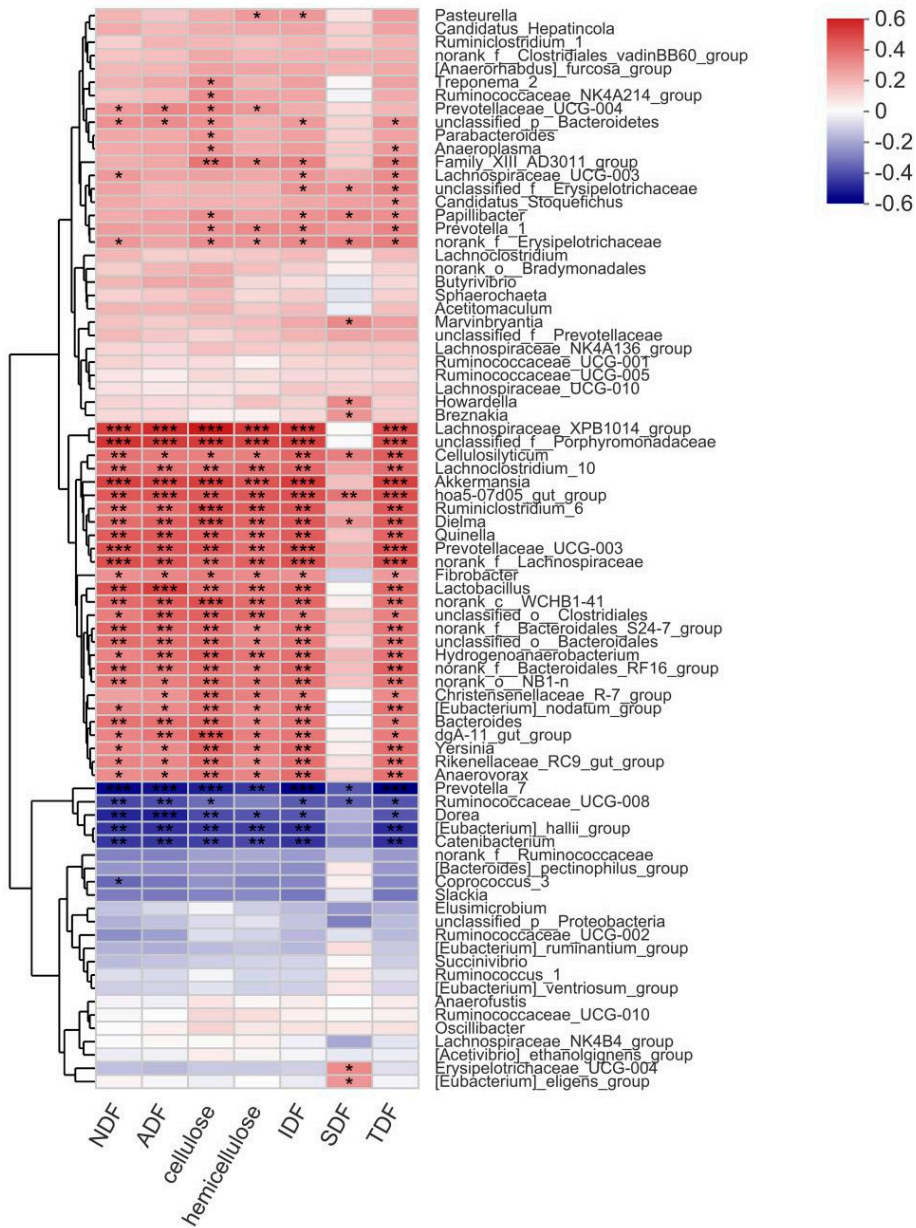


Figure S2. Correlation heatmap between potential key bacteria abundance and ATTD of fiber in pigs. * Means significant correlation ($p < 0.05$). ** Means significant correlation ($p < 0.01$). *** Means significant correlation ($p < 0.001$).