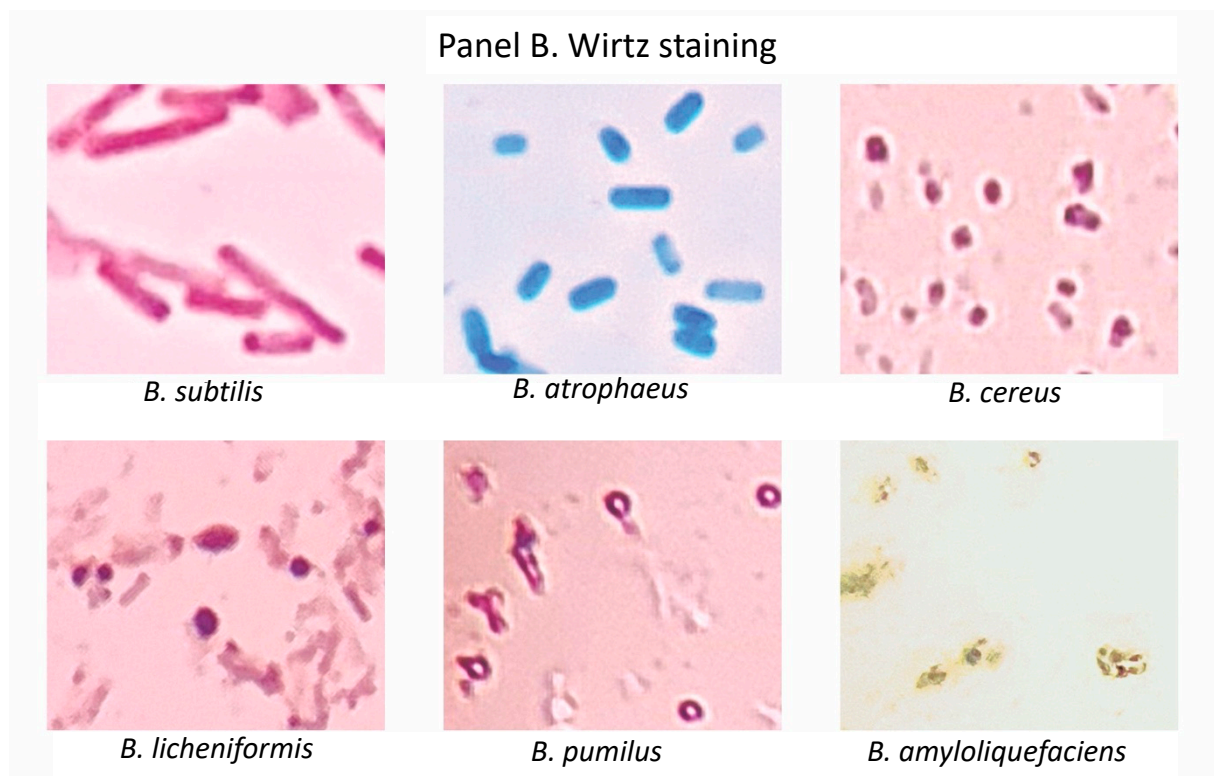
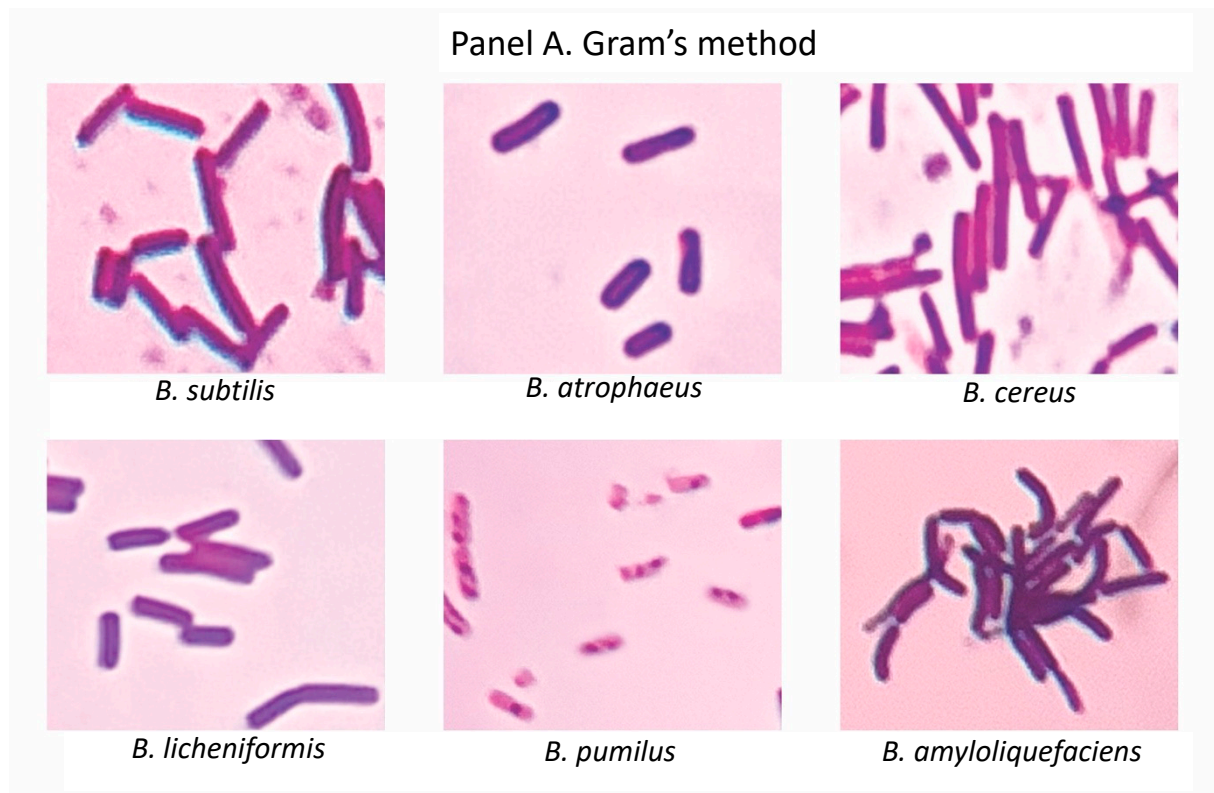


Supplementary Figure S2



Panel C. Encapsulated *Bacillus* sp. stained using Maneval's envelope staining



B. subtilis



B. atrophaeus



B. cereus



B. licheniformis



B. pumilus



B. amyloliquefaciens

Figure S2. Microscopic analyses of *Bacillus* species cells by Gram staining (panel A), Wirtz staining (panel B) and Maneval tests (panel C)