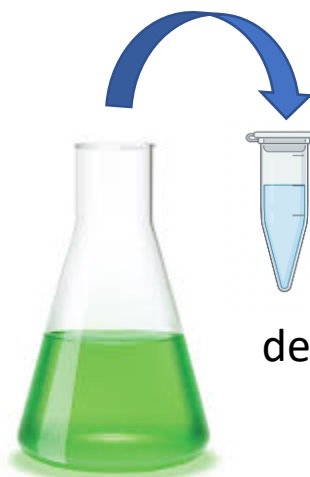
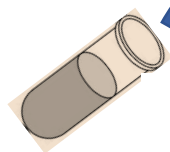
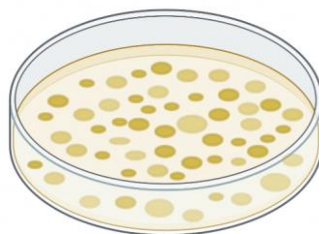
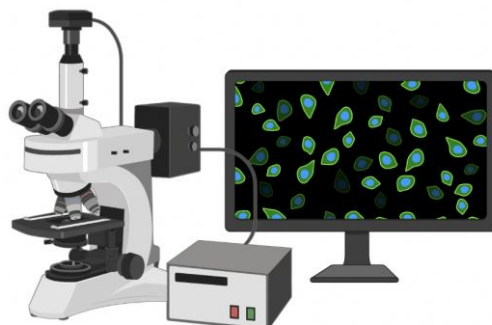


A**Inoculation****Incubation at 20 °C, 25 °C or 30 °C****Overnight culture****Dilution
1:40**Aliquotes for
further analyses
depicted in **B**, **C** and **D**ASW+ 0.1 M HEPES
(pH 7.0, 7.5, 8.0, 8.3 or 8.5)**B**Measurement of
optical density (O.D.)
at 600 nm**C**Analysis of cell culturability
on Marine agar at 26 °C for
24 h**D**Propidium iodide
staining

Total cell counting + cell size analysis

Figure S1. Analysis of *V. harveyi* cells from survival assays

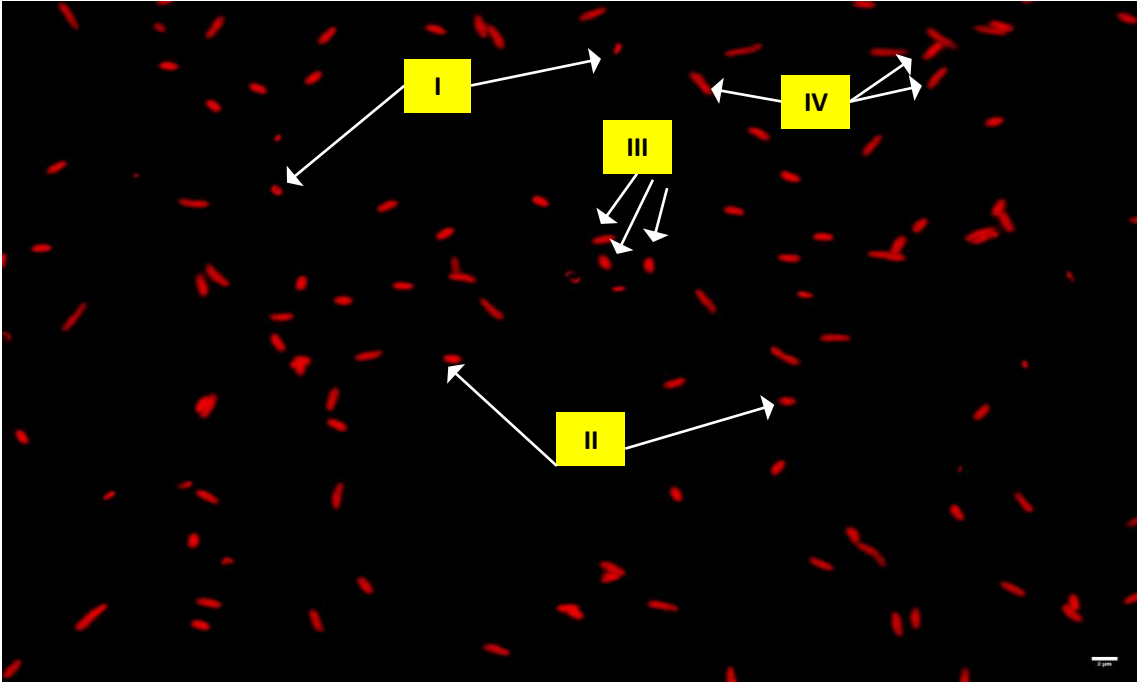
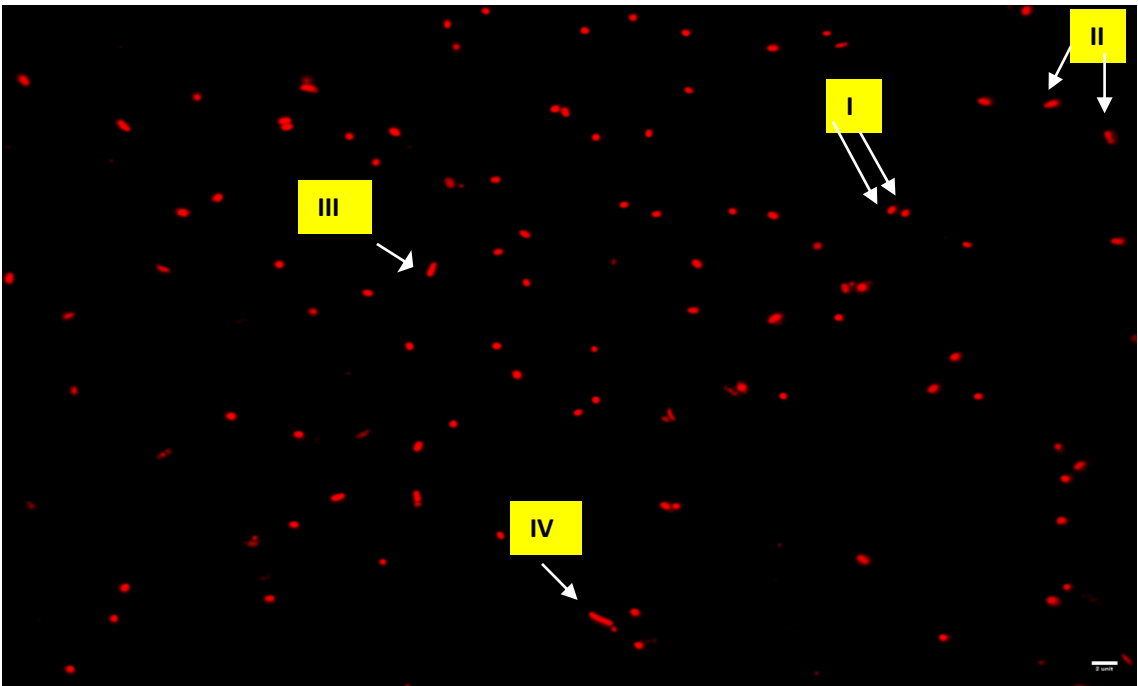
A**B**

Figure S2. Examples of *V. harveyi* cells that possess different morphology at pH 8.5 and 30 °C. The images correspond to the cells present in the control sample (panel A) and population obtained after incubation for 21 day (panel B). Several cells of different sizes indicated by arrows: ≤ 0.95 (I); $> 0.95 - \leq 1.3$ (II); $> 1.3 - 1.6 \leq$ (III); > 1.6 (IV).